

SCHEDULE "A"

TENTATIVE PLAN OF AIR SPACE SUBDIVISION OF LOT A SECTION 33, RANGE 6, NANAIMO DISTRICT, PLAN EPP90595

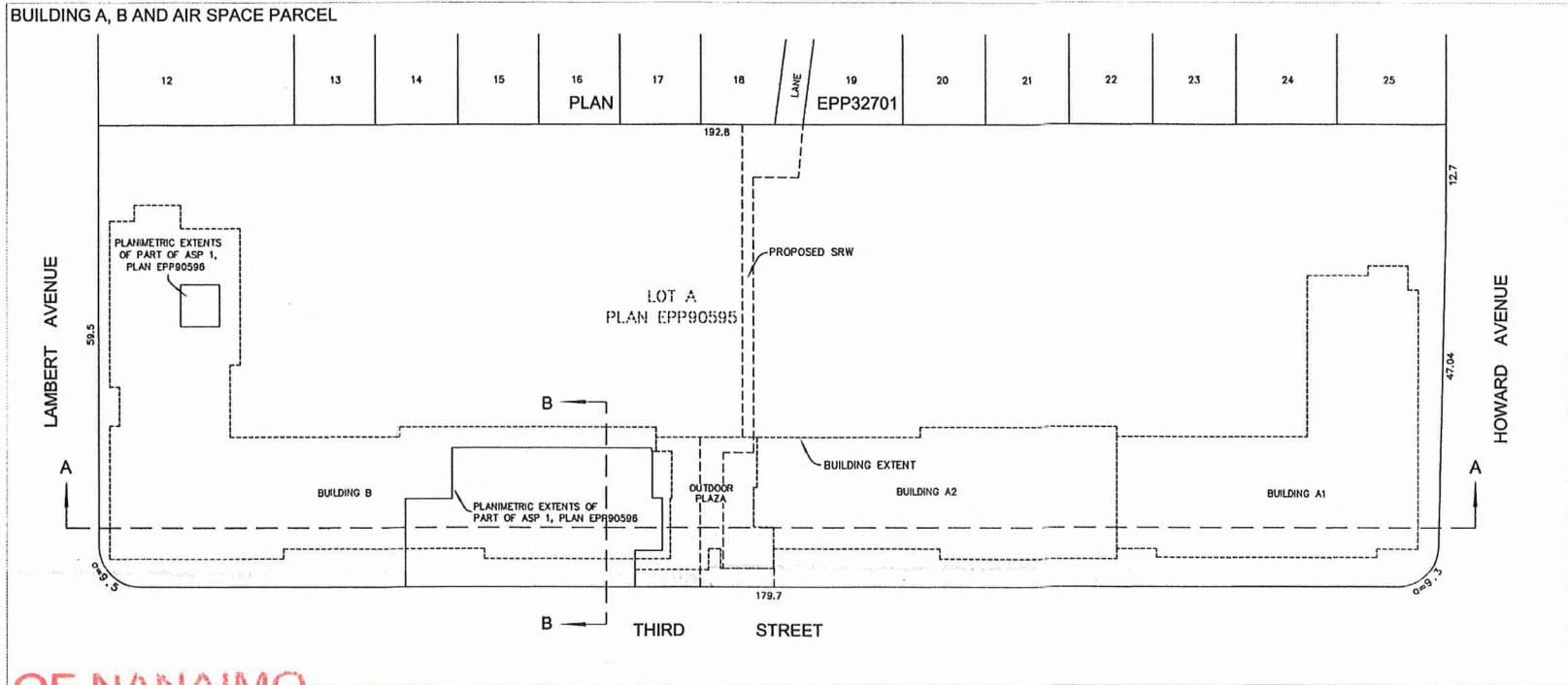
0 10 20 40 60 80 100
The intended plot size of this plan is 432mm in width by 560mm in height (C size) when plotted at a scale of 1:1000.

LEGEND

ALL DIMENSIONS ARE IN METRES

DIMENSIONS ARE DERIVED FROM LAND TITLE OFFICE RECORDS

THIS PLAN HAS BEEN PREPARED IN ACCORDANCE WITH THE PROFESSIONAL REFERENCE MANUAL

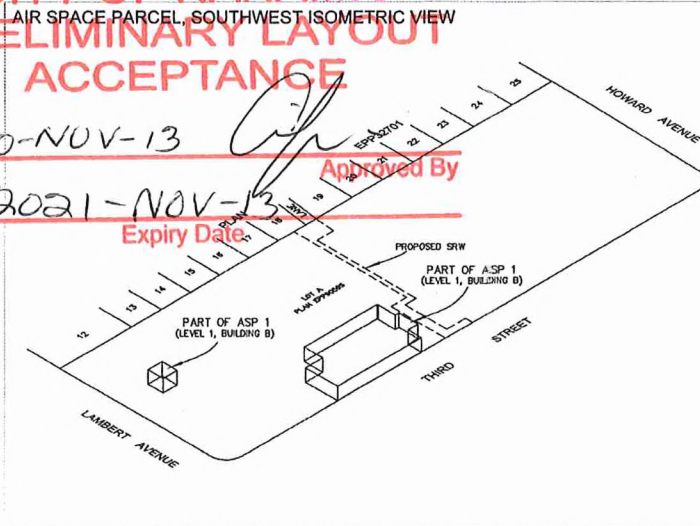


CITY OF NANAIMO
PRELIMINARY LAYOUT
ACCEPTANCE

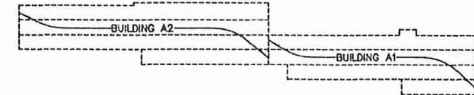
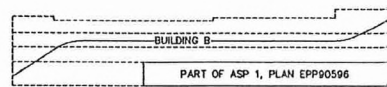
2020-NOV-13
Date

Approved By

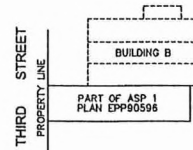
2021-NOV-13
Expiry Date



SECTION A-A, BUILDING A, B AND AIR SPACE PARCEL
NOT TO SCALE



SECTION B-B, BUILDING A, B AND AIR SPACE PARCEL
NOT TO SCALE



RECEIVED

AUG 08 2019
SUBMITTED
CITY OF NANAIMO
SUBDIVISION

JEA JE ANDERSON & ASSOCIATES
SURVEYORS AND ENGINEERS
203 - 177 WELD ST., PO BOX 247
PARKSVILLE, B.C. V8P 2G4
250-248-5755 parkville@jeanderson.com

PLAN SHOWING TENTATIVE
AIR SPACE PARCEL

LOT A, SECTION 33, RANGE 6,
NANAIMO DISTRICT, PLAN EPP90595.

PID 008-745-854

PREPARED FOR
WERTMAN DEVELOPMENT CORPORATION

OUR FILE : 89129-1

REVISION : 1