

SCHEDULE "A"

SKETCH PLAN OF PROPOSED SUBDIVISION OF PART OF LOT 1,
SECTION 13, RANGE 7, MOUNTAIN DISTRICT, PLAN 41146.

0 10 20 40 60 80 100

The intended plot size of this plan is 432mm in width by 280mm in height, B size, when plotted at a scale of 1:1000.

SUBJECT TO CHARGES SHOWN
ON TITLE NO. CA1346483
(P.I.D. 000-509-027)

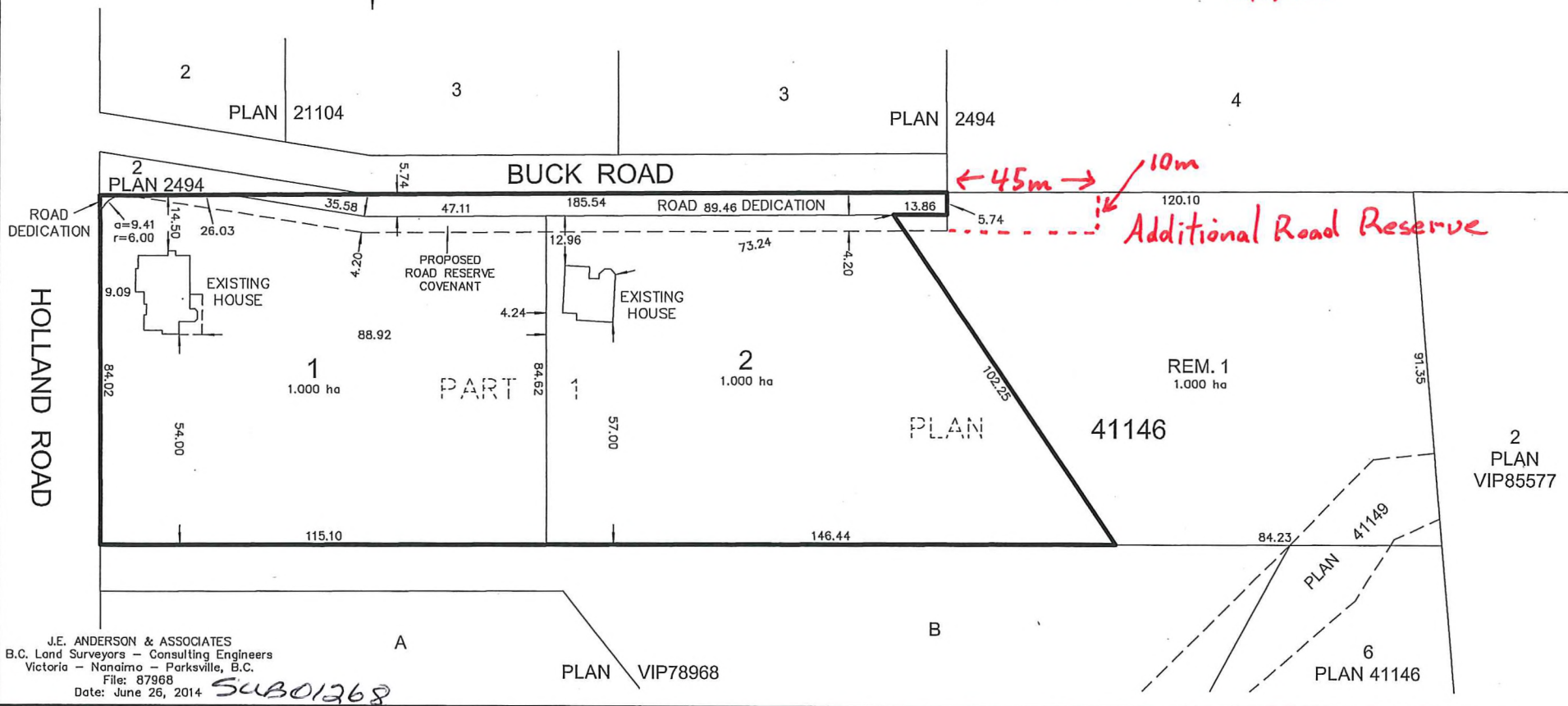
DIMENSIONS ARE DERIVED FROM
LAND TITLE OFFICE RECORDS

THIS PLAN HAS BEEN PREPARED IN
ACCORDANCE WITH PROFESSIONAL
REFERENCE MANUAL



**CITY OF NANAIMO
PRELIMINARY LAYOUT
ACCEPTANCE**

2017-NOV-16 *[Signature]*
Date Approved By
2018-NOV-16
Expiry Date



J.E. ANDERSON & ASSOCIATES
B.C. Land Surveyors - Consulting Engineers
Victoria - Nanaimo - Parksville, B.C.
File: 87968
Date: June 26, 2014

SUB01268

PLAN VIP78968

PLAN 41146

2
PLAN
VIP85577