

Plan showing proposed boundary adjustment between:
 That part of Section 13, Range 3, Cranberry District,
 shown coloured red on Plan DD257505,
 in AFB 10/167/5439C &
 Part of Parcel A (DD 380791-1) of Section 13,
 Range 3, Cranberry District, Except Part in Plan 21888.

City Address: 2311 Extension Road
 2301 Extension Road



Scale 1:250

Distances and elevations shown are in metres.

Geodetic elevations are derived from control monument 2316288.

Legend:
 red - Division Fire Hydrant;
 blue - Division Water Valve;
 yellow - Division Utility Pole;
 black - Division Edge of Pavement

**CITY OF NANAIMO
 PRELIMINARY LAYOUT
 ACCEPTANCE**
 2012-10-17 *Tim A. [Signature]*
 Date Approved By
 2013-10-17
 Expiry Date

*Additional Road Dedication of 2.5 m in
 width to be dedicated from New Lot 1
 and the Remainder Parcel A*



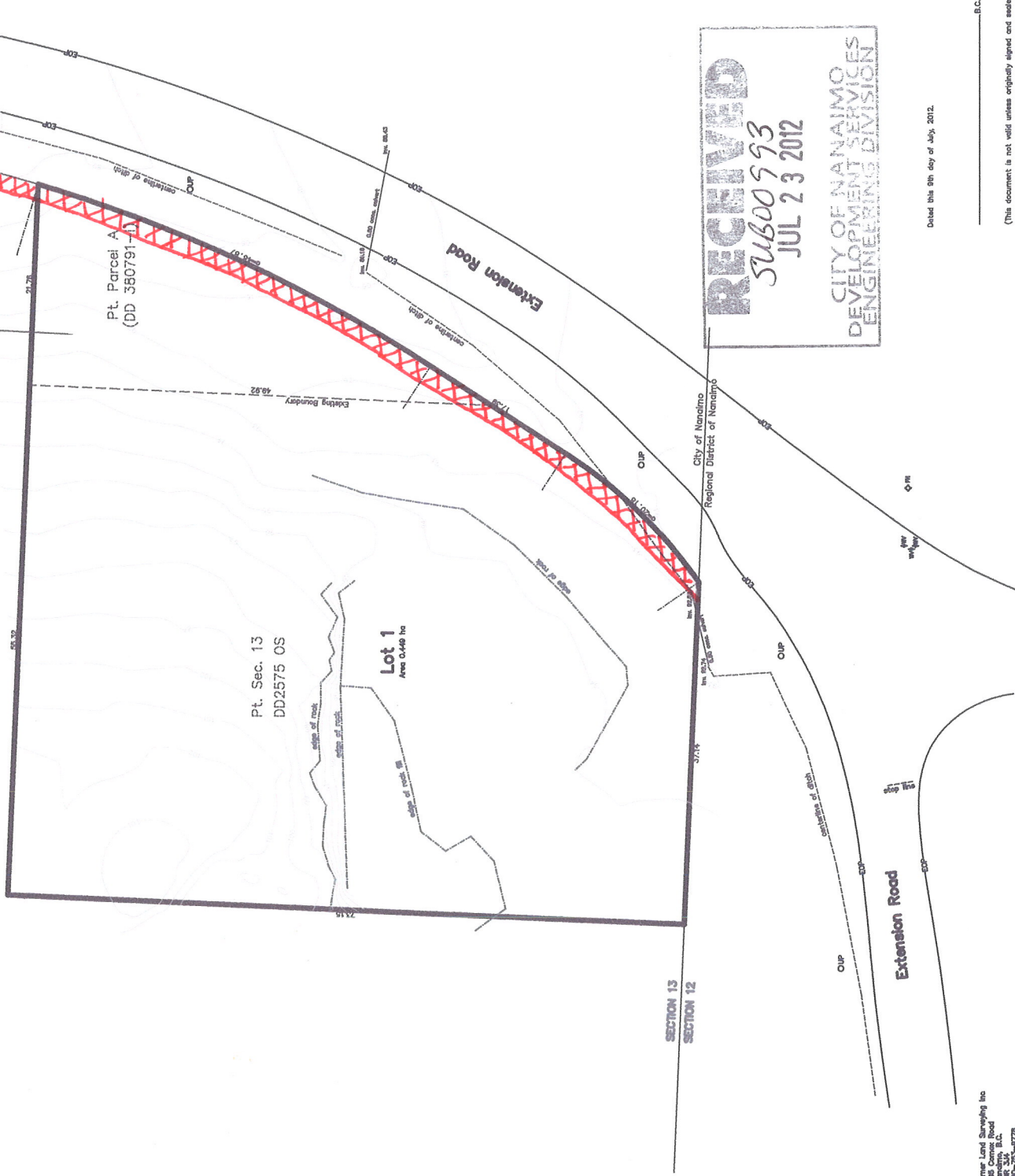
Rem. Parcel A
 DD380791-1

Portion of Parcel A (DD380791-1)
 Area 820.0 Sq.m.

Pt. Parcel A
 (DD 380791-1)

Pt. Sec. 13
 DD2575 0S

Lot 1
 Area 0.448 ha



SECTION 13
 SECTION 12

RECEIVED
 SUB00993
 JUL 23 2012
 CITY OF NANAIMO
 DEVELOPMENT SERVICES
 ENGINEERING DIVISION

Dated this 8th day of July, 2012.