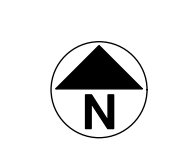


Millstone Waterfront Development
Schematic Landscape Plan
 FOR CLIENT REVIEW DATE: 2022.08.09

RECEIVED
 RA 475
 2022-AUG-10
 Current Planning



200 - 524 Cuthbert Road
 Victoria, BC V8Z 1G1
 Phone: 250.412.2891
 Fax: 250.412.2892

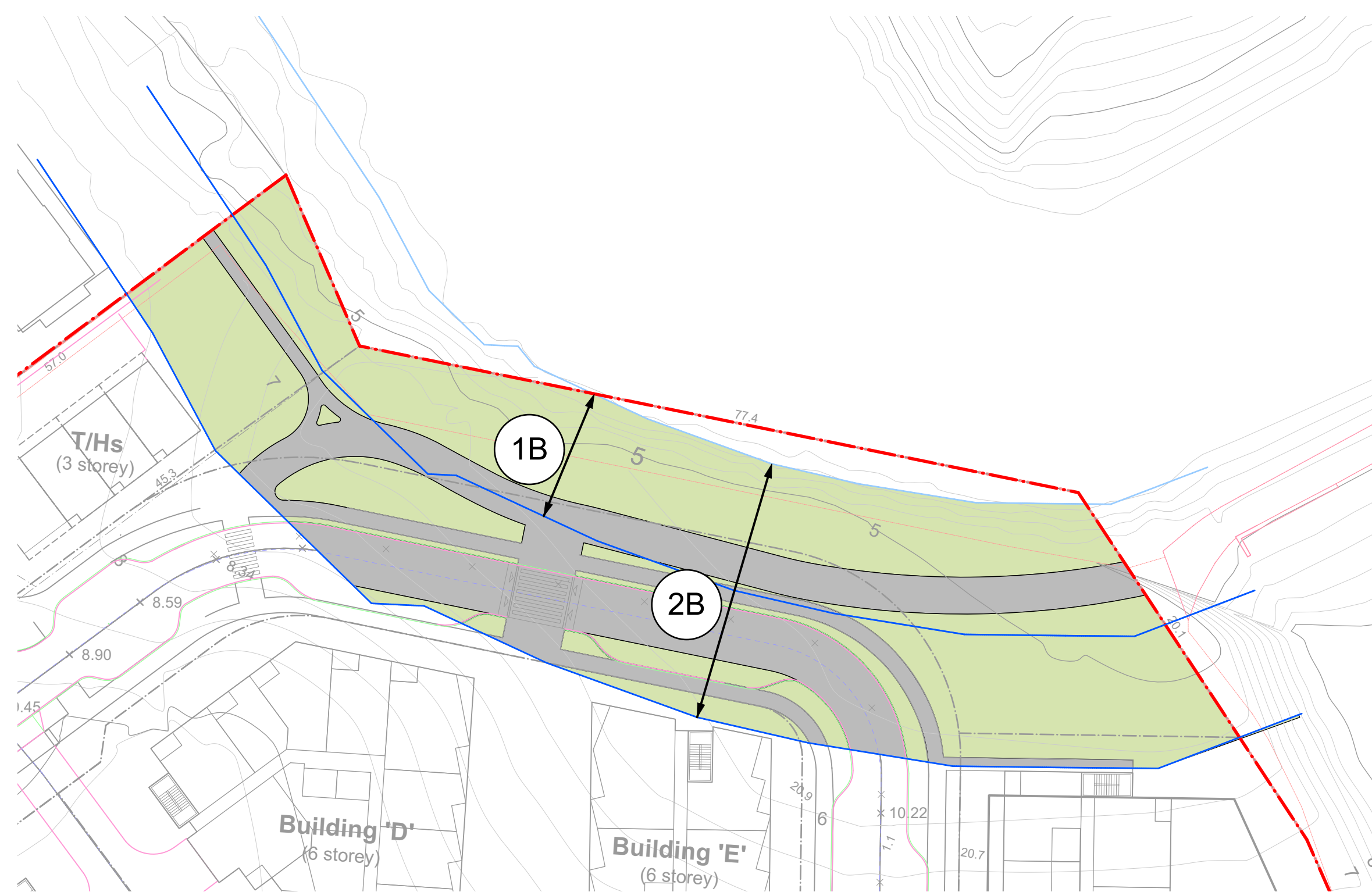


EXISTING CONDITIONS (1A)

15m Setback:
 - 789 m² impervious
 - 626 m² pervious

EXISTING CONDITIONS (2A)

30m Setback:
 - 2440 m² impervious
 - 1030 m² pervious



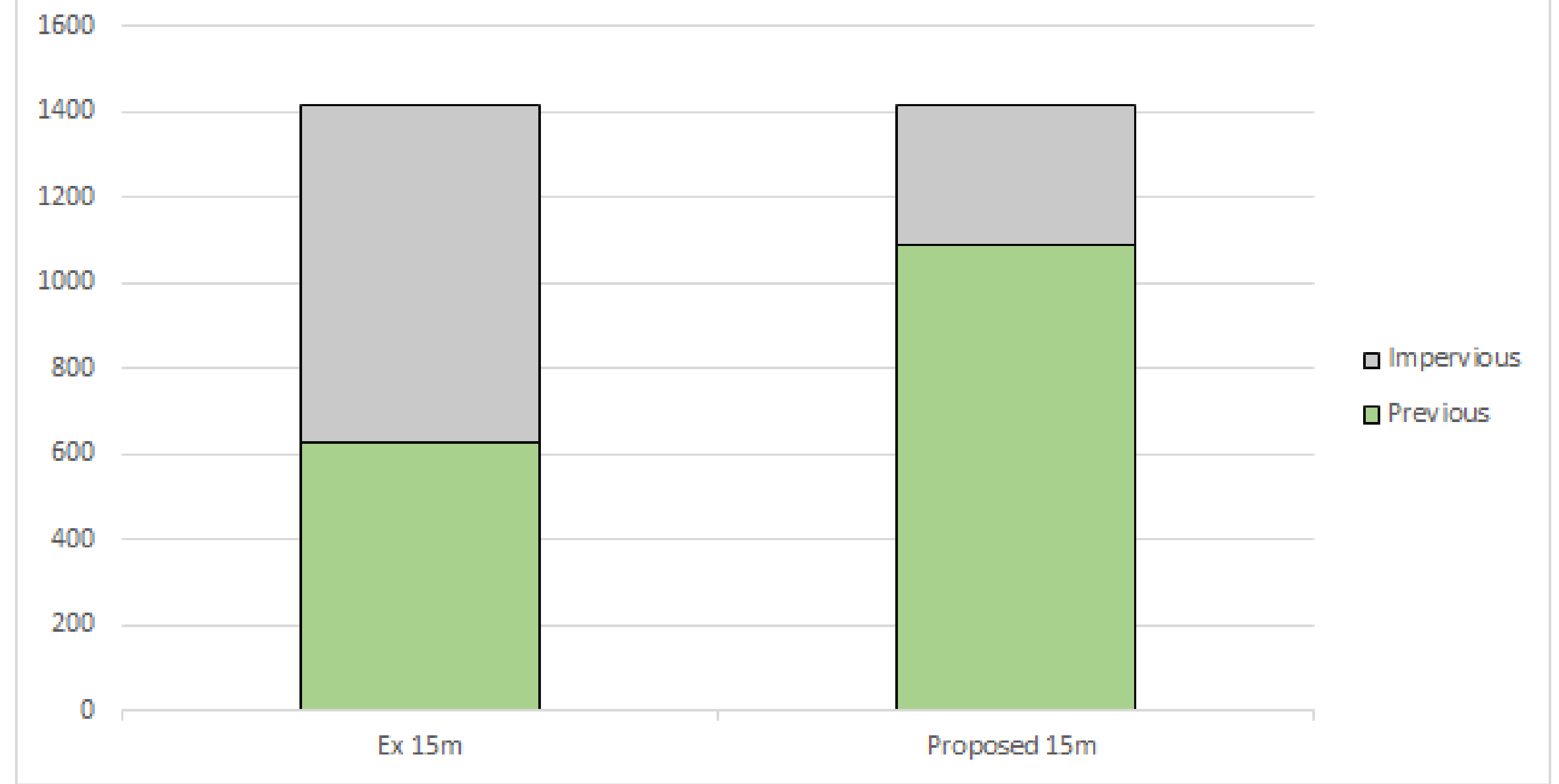
PROPOSED (1B)

15m Setback:
 - 325m² impervious
 - 1090m² pervious

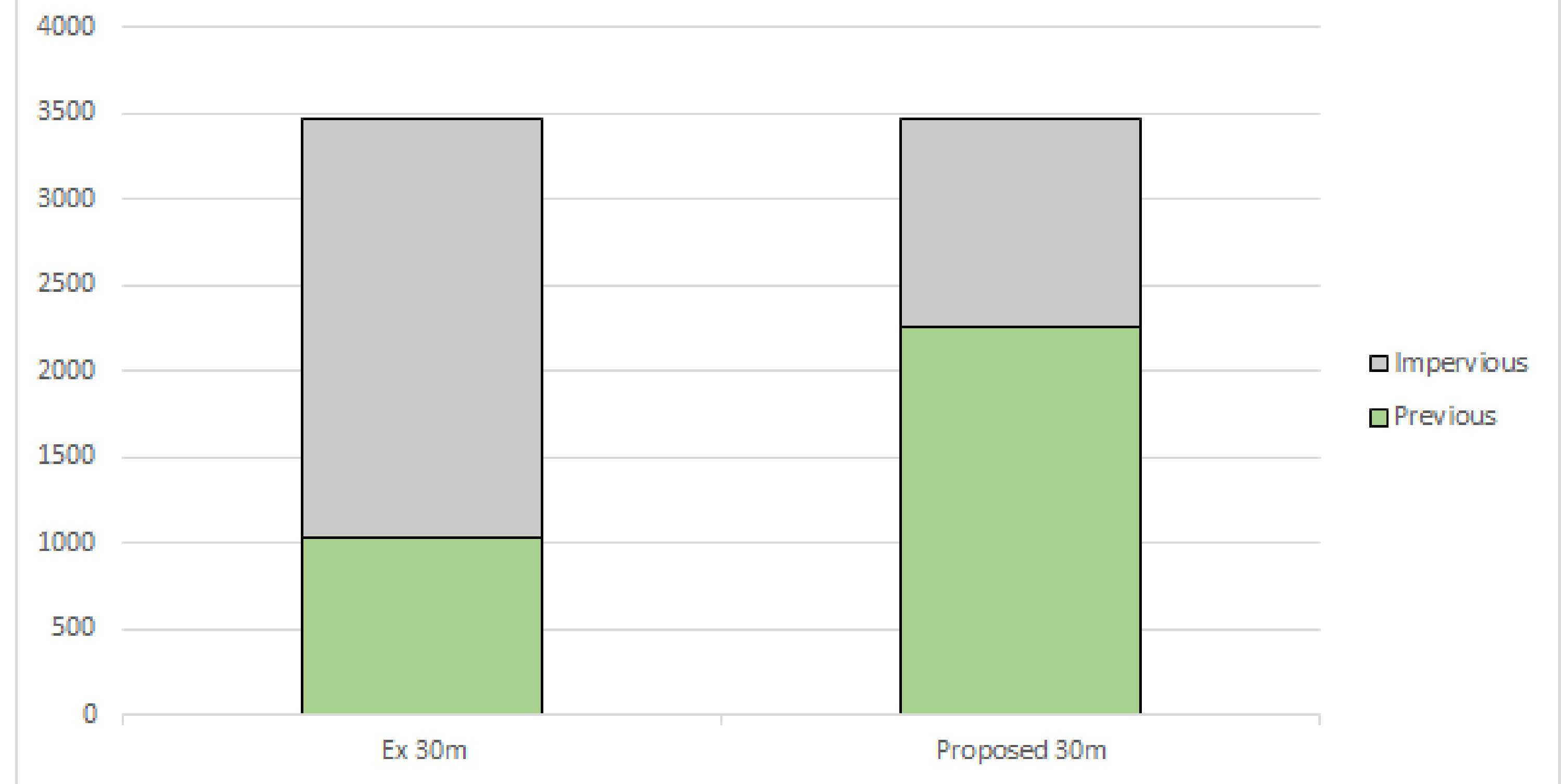
PROPOSED (2B)

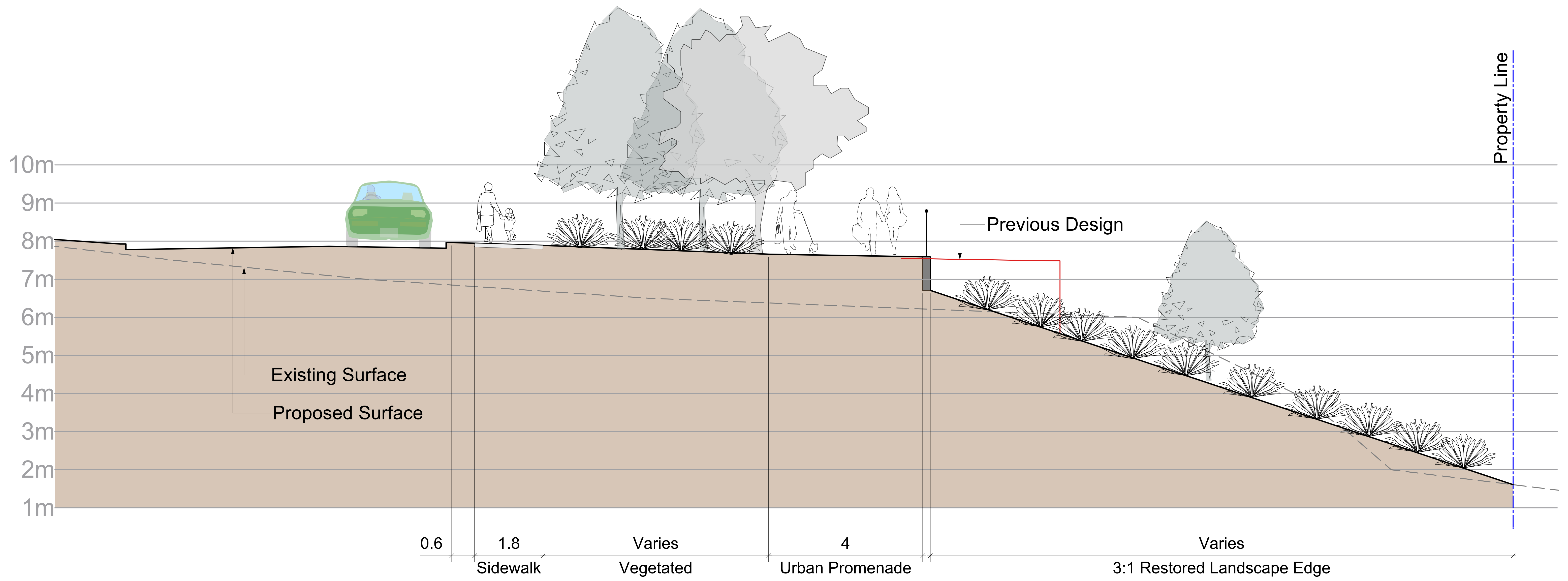
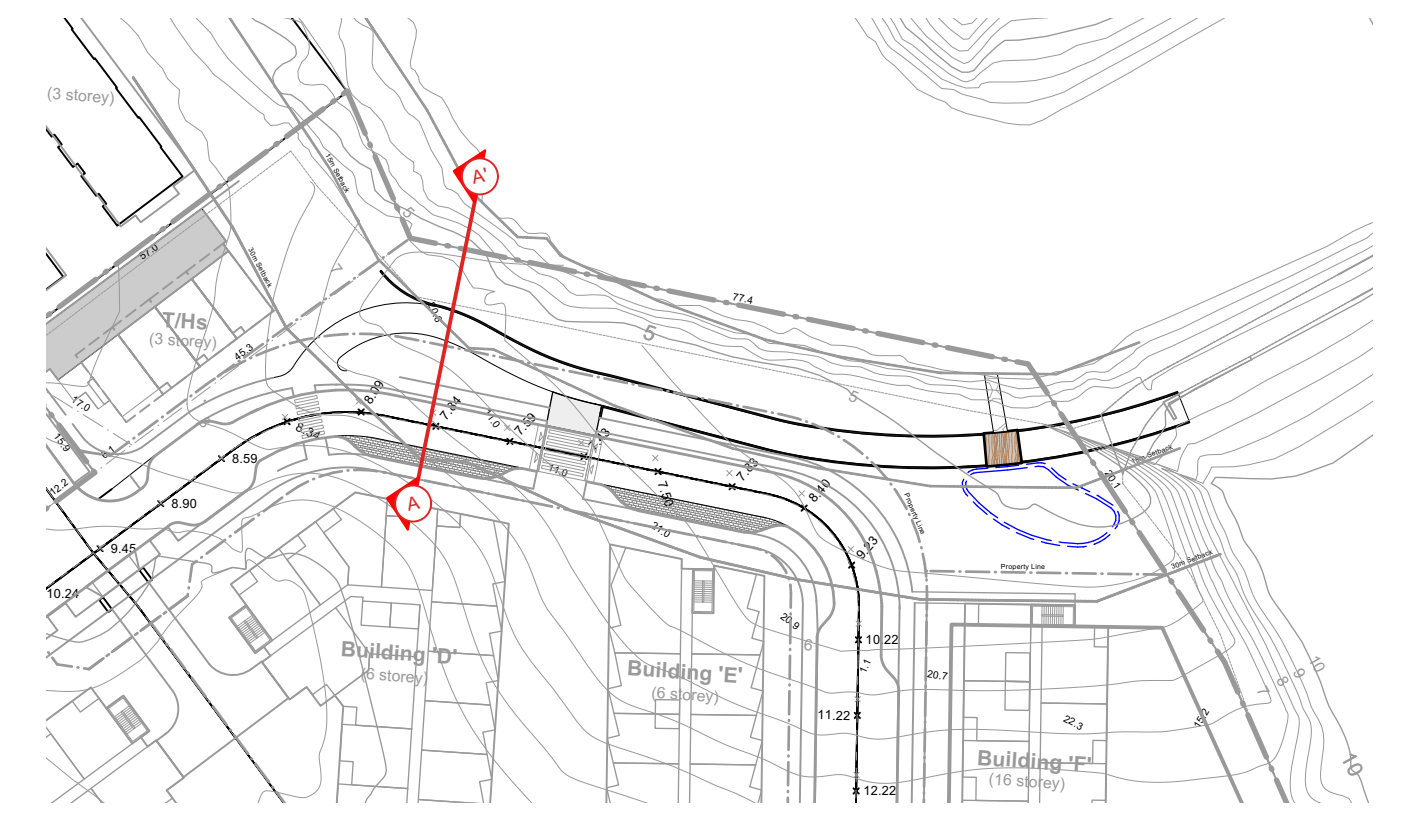
30m Setback:
 - 1210m² impervious
 - 2260m² pervious

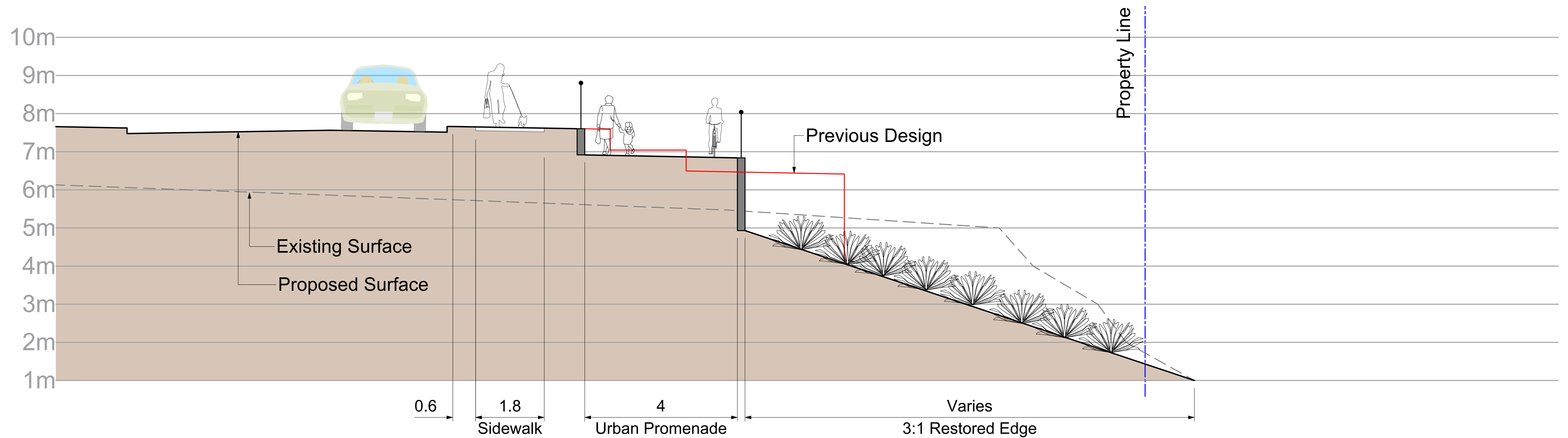
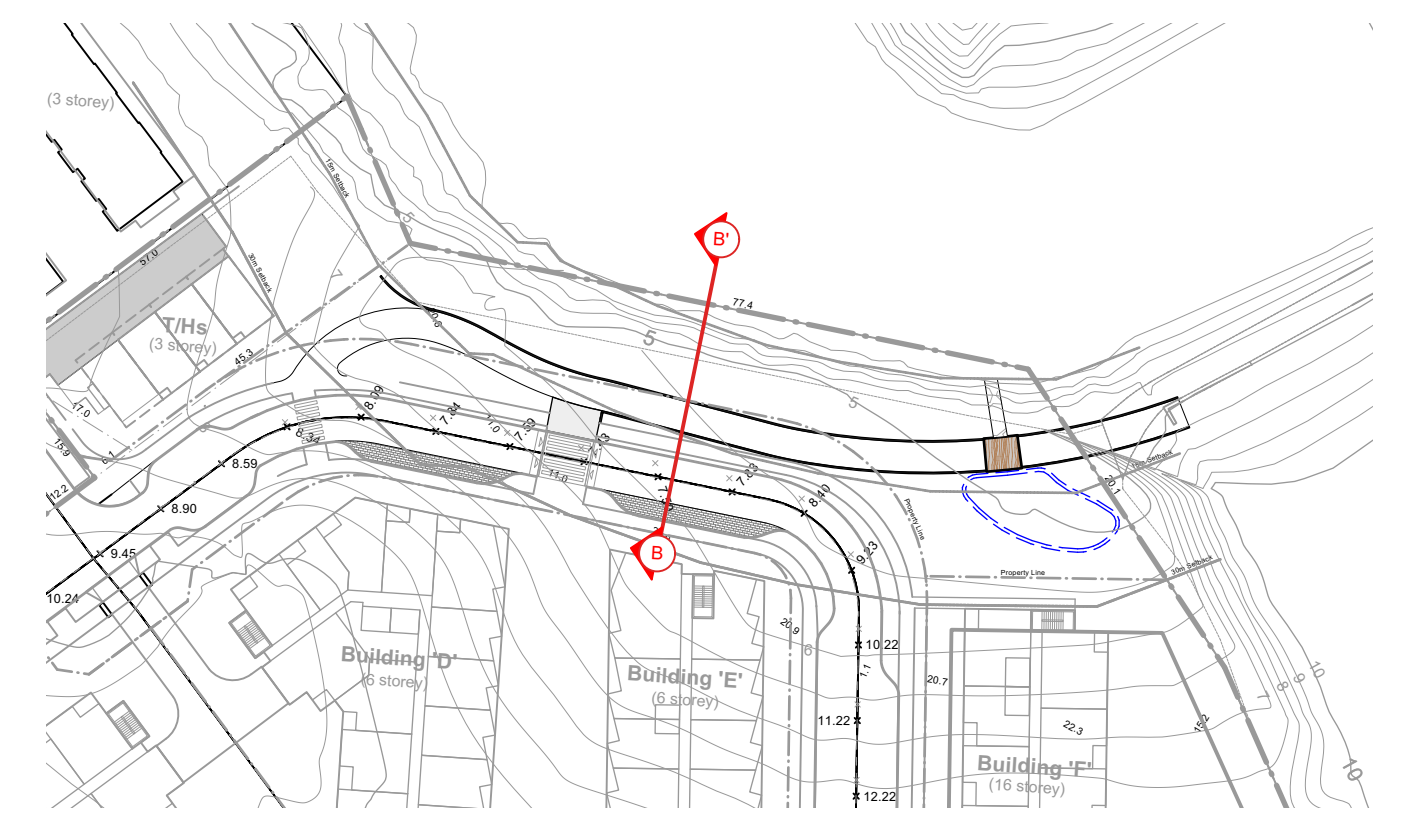
15m Setback Pervious vs Impervious



30m Setback Pervious vs Impervious







**Millstone Waterfront Development
Section B**

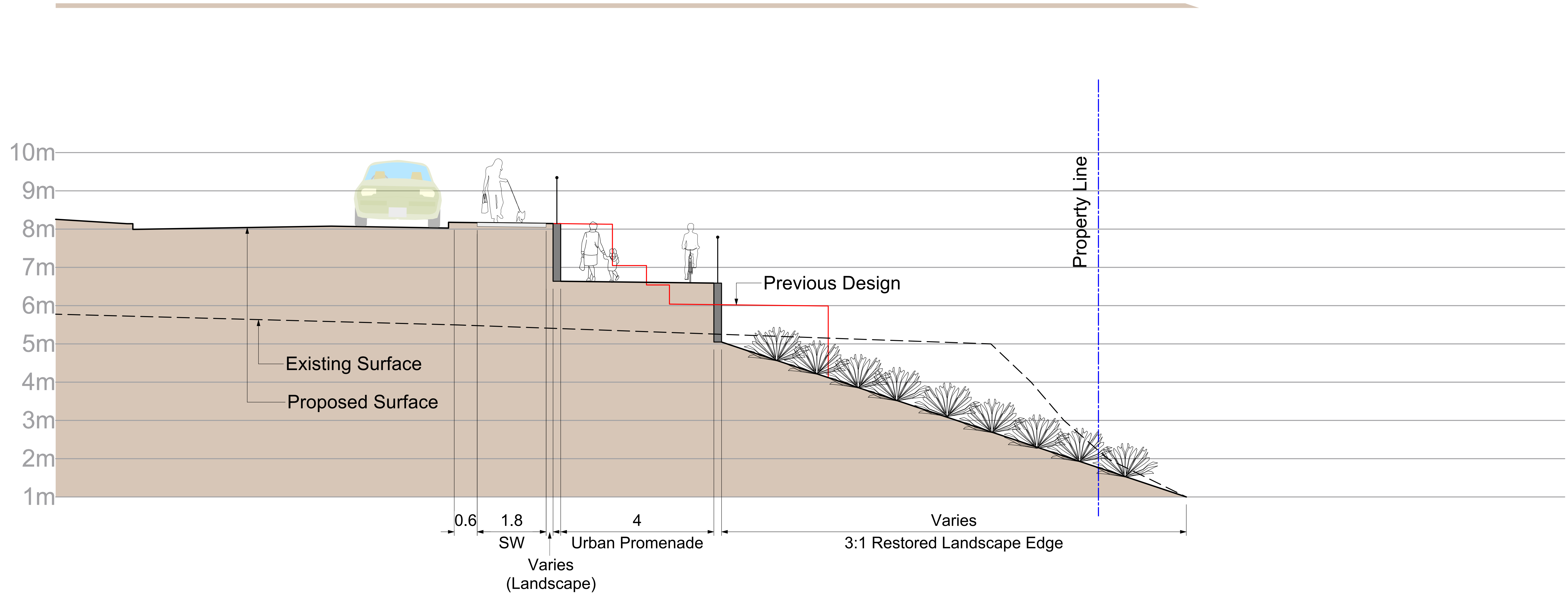
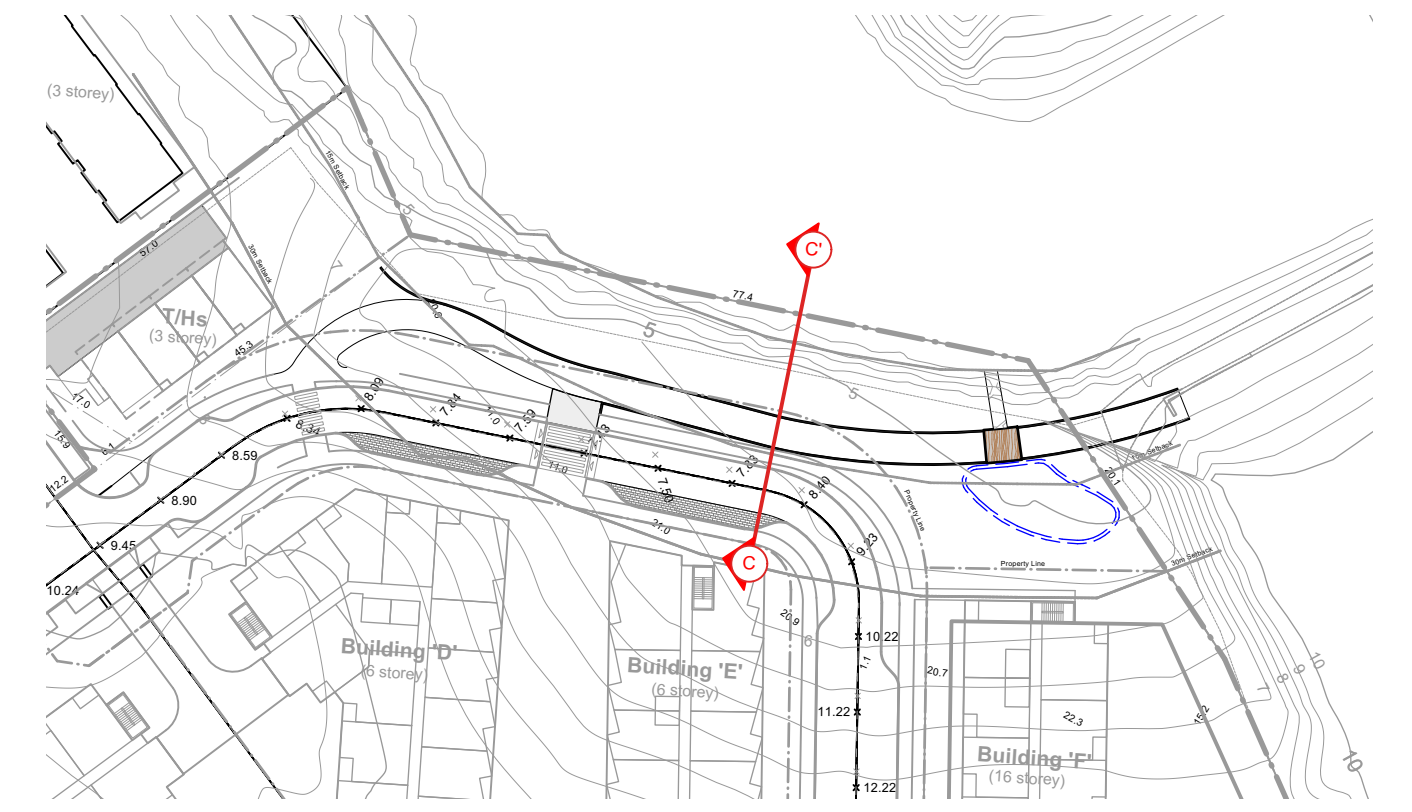
FOR CLIENT REVIEW DATE: 2022.08.09



RECEIVED
RA475
2022-AUG-10
Current Planning

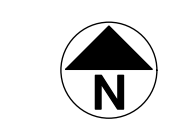
200 - 524 Columbia Road
Victoria, BC V8T 1G1

Phone: 250.412.2891
Fax: 250.412.2892



**Millstone Waterfront Development
Section C**

FOR CLIENT REVIEW DATE: 2022.08.09



RECEIVED
RA475
2022-AUG-10
Current Planning

200 - 524 Columbia Road
Victoria, BC V8Z 1G1

Phone: 250.413.2891
Fax: 250.412.2892