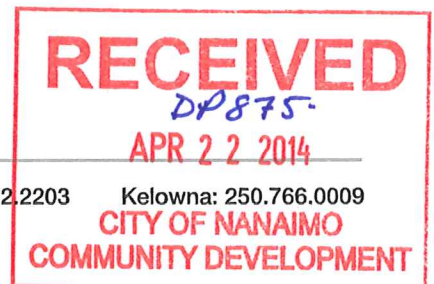


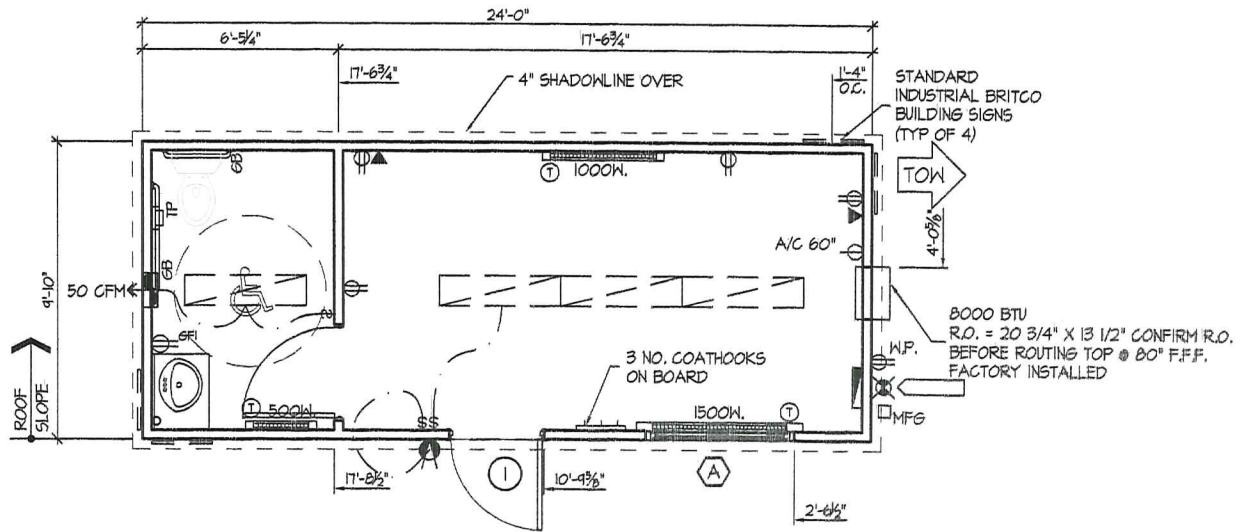
General Specifications

Exterior Siding:	Vertical wood siding (Ranchwall)	Ceiling:	Vinyl-clad gyproc (white)
Interior Walls:	Vinyl-clad paneling (Norwich Pearl)	Roof:	EPDM (rubber) roofing
Windows:	5'-0" x 4'-0" O/XO horizontal slider with insect screen & security bars	Heating/Cooling:	Electric baseboard heaters (240V) and air conditioning (120V)
Exterior Doors:	Hollow metal insulated door with full lite window, passage set, dead-bolt, check chain and security bars	Lighting:	Fluorescent lights, 2-bulb, surface-mounted; Exterior lights
Interior Doors:	Hollow-core door, prefinished wood with passage set (if applicable)	Electrical:	120/240 volt single phase, mast & weatherhead, electrical panel, duplex wall receptacles and tel/data conduits (jacks & wiring not included)
Floor:	Vinyl-composite tile (commercial grade)		



ELECTRICAL LEGEND

SYMBOL	DESCRIPTION
\$	SINGLE POLE SWITCH
⊖	SINGLE RECEPTACLE @ 16" TO BOTTOM U.N.O.
⊖	DUPLEX RECEPTACLE @ 16" TO BOTTOM U.N.O.
⊖ _{GFI}	GROUND FAULT INTERRUPTER RECEPTACLE
⊖ _{42"}	DUPLEX RECEPTACLE @ SPECIFIED HEIGHT
⊖ _{SC}	SEPARATE CIRCUIT DUPLEX RECEPTACLE
⊖ _{WP}	WEATHER-PROOF RECEPTACLE
⊖	UNDER FLOOR HEAT TRACE RECEPTACLE
⊖	EXTERIOR WALL MOUNT LIGHT FIXTURE
[Symbol]	FLUORESCENT FIXTURE (1'X 4')
[Symbol]	ELECTRICAL WIRE
[Symbol]	500 WATT ELECTRIC BASEBOARD HEATER
[Symbol]	1000 WATT ELECTRIC BASEBOARD HEATER
[Symbol]	1500 WATT ELECTRIC BASEBOARD HEATER
⊖	THERMOSTAT
[Symbol]	WALL MOUNTED EXHAUST FAN
[Symbol]	ELECTRICAL ENTRY
[Symbol]	ELECTRICAL PANEL
[Symbol]	TELEPHONE OUTLET, CONDUIT THRU FLOOR



FLOOR PLAN

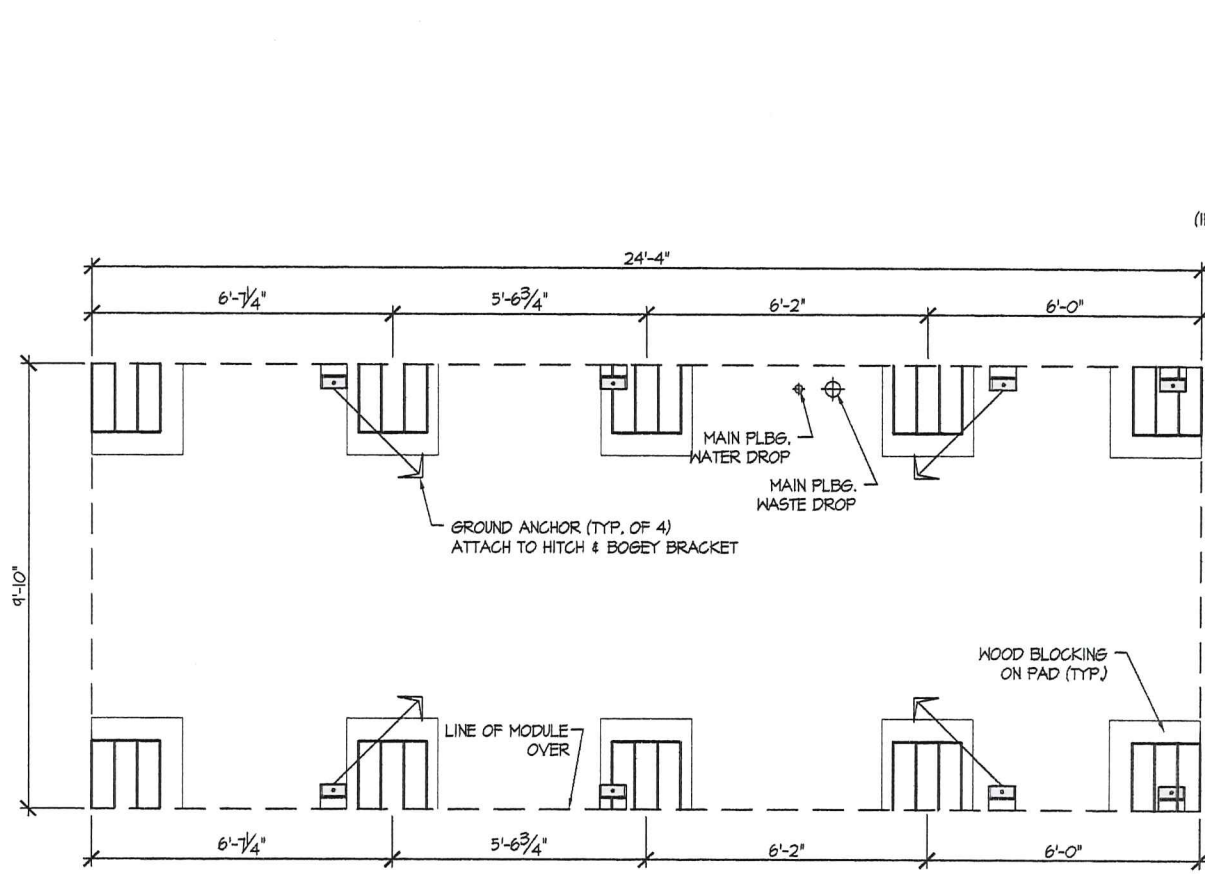
SCALE : 1/4" = 1'-0"



© BRITCO LP, 2014
 THIS DRAWING IS SOLELY THE PROPERTY OF BRITCO.
 ANY PERSON HAVING POSSESSION OF THIS
 DRAWING SHALL NOT:
 a) COPY OR REPRODUCE IT BY ANY MEANS.
 b) MODIFY OR AMEND ITS CONTENTS OR
 c) DELIVER OR DISTRIBUTE IT TO THIRD PARTIES
 WITHOUT HAVING FIRST OBTAINED THE EXPRESS WRITTEN
 CONSENT OF BRITCO.
 21640 Smith Crescent, Langley BC V2Y 2R1
 Tel: (604) 888-2000 Fax: (604)888-2086

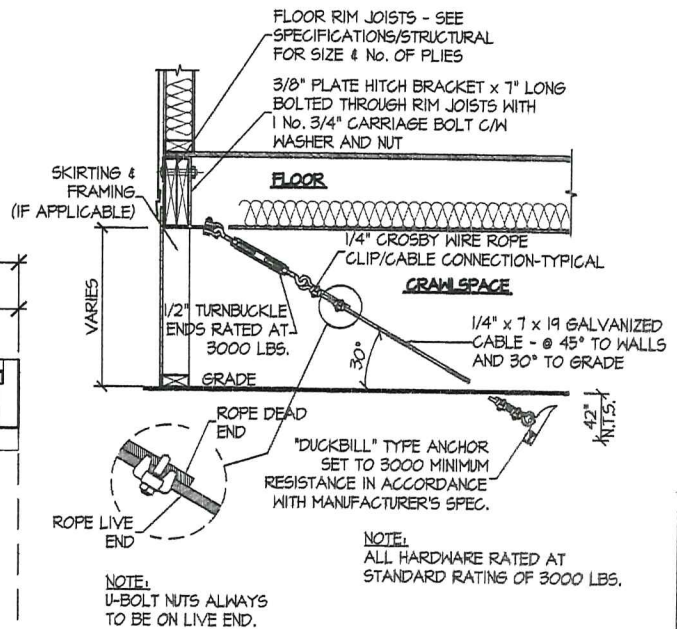
DATE:	REVISIONS	BY	DATE	PROJECT TITLE	PROJECT NO.	SHT. NO.
Apr. 17, 14	A ISSUED FOR REVIEW	CAF	APR 17/14	BRITCO LP	P14???	A1.1
SCALE: AS NOTED				10' x 24' DESIGNER OFFICE		
DRAWN BY: CAF				DRAWING TITLE		
CHECKED: CN				FLOOR PLAN		
JOB: J14021						
PRINTED ON: Apr. 17, 14						

britco
 BUILDING INNOVATION
RECEIVED
 APR 22 2014
 DP875
 CITY OF NANAIMO
 COMMUNITY DEVELOPMENT

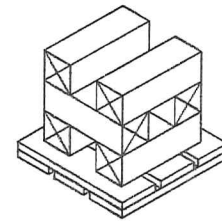


FOUNDATION PLAN

SCALE: 3/8" = 1'-0"



ANCHOR INSTALLATION DETAIL (HITCH BRACKETS)
SCALE: N.T.S.



6 NO. 6" X 6" X 18" LONG TIMBERS ON 24" X 24" X 3" PRESSURE TREATED WOOD PADS

CRIB BLOCKING A
SCALE: 1/2" = 1'-0"

© BRITCO STRUCTURES, 2010
THIS DRAWING IS SOLELY THE PROPERTY OF BRITCO STRUCTURES. ANY PERSON HAVING POSSESSION OF THIS DRAWING SHALL NOT:
a) COPY OR REPRODUCE IT BY ANY MEANS,
b) MODIFY OR AMEND ITS CONTENTS, OR
c) DELIVER OR DISTRIBUTE IT TO THIRD PARTIES WITHOUT HAVING FIRST OBTAINED THE EXPRESS WRITTEN CONSENT OF BRITCO STRUCTURES.
21690 SMITH CRESCENT, LANSLEY, B.C., V2Y 2R1
(604) 888-2000

DATE	AUG. 20, 2009	REVISIONS	BY	DATE
SCALE	AS NOTED	A	ISSUED FOR SIGN OFF	NV NOV/19/09
DRAWN BY	NV	B	ISSUED FOR PRODUCTION	NV
CHECKED	CB			
P				
J				

PROJECT TITLE	BRITCO LEASING LTD (VANOC) 10' x 25' WASHCAR
DRAWING TITLE	FOUNDATION PLAN & DETAILS
SHT. NO.	S1.1

britco
FACTORY BUILT
RECEIVED
APR 22 2014
20875
CITY OF NANAIMO
COMMUNITY DEVELOPMENT