



**DEVELOPMENT PERMIT NO. DP000859**

**416382 BC LTD  
(Cabela's Sporting Goods)  
Name of Owner(s) of Land (Permittee)**

**6900 ISLAND HIGHWAY N  
Civic Address**

1. This development permit is issued subject to compliance with all of the bylaws of the municipality applicable thereto, except as specifically varied or supplemented by this permit.
2. This development permit applies to and only to those lands within the municipality described below, and any and all building structures and other developments thereon:

Legal Description:

**LOT 5, DISTRICT LOT 28, WELLINGTON DISTRICT, PLAN 7151, EXCEPT  
THOSE PARTS IN PLANS 37535, 48496 AND VIP60134**

**PID No. 000-089-567**

3. The land described herein shall be developed strictly in accordance with the following terms and conditions and provisions of this permit and any plans and specifications hereto which shall form a part thereof.

<b>Schedule A</b>	<b>Location Plan</b>
<b>Schedule B</b>	<b>Site Plan</b>
<b>Schedule C</b>	<b>Landscape Plan</b>
<b>Schedule D</b>	<b>Landscape Plan Features</b>
<b>Schedule E</b>	<b>Landscape Plan Features and Planting Material</b>
<b>Schedule F</b>	<b>Building Elevations</b>

- a) If the applicant does not substantially commence the development permitted by this permit within two years of the date of this permit, the permit shall lapse.
- 4. This permit is not a building permit nor does it constitute approval of any signage. Separate applications must be made for a building permit and sign permit.

REVIEWED AND APPROVED ON

2014 - JAN - 11  
Date

I. Howat  
General Manager  
**Corporate Services**

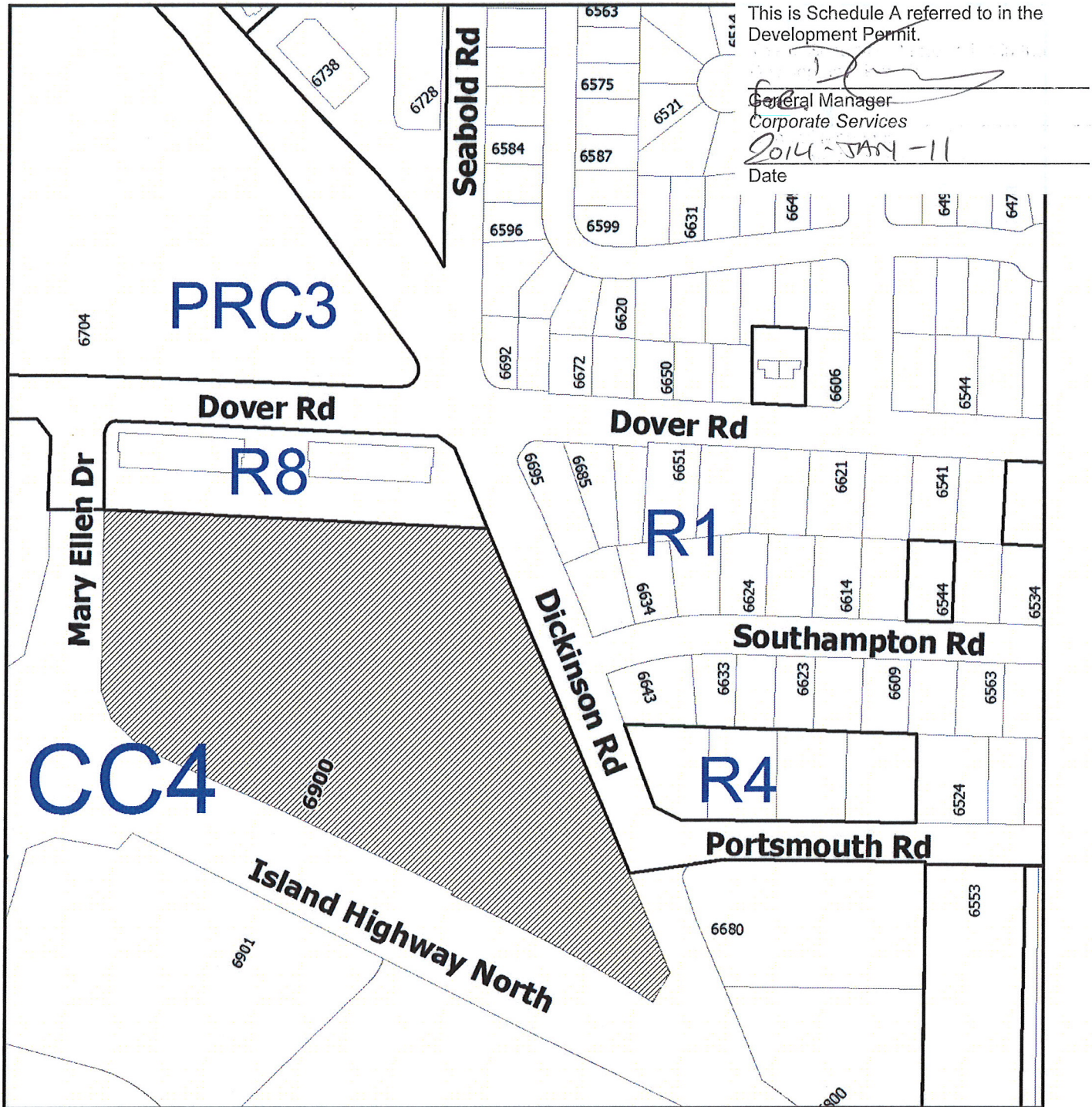
Pursuant to Section 154 (1)(b) of the Community Charter

GN/lb

Prospero attachment: DP000859



## SCHEDULE A



DEVELOPMENT PERMIT NO. DP000859

## LOCATION PLAN

Civic: 6900 Island Highway North  
Lot 5, District Lot 28, Wellington District, Plan 7151,  
Except those parts in Plan 37535, 48496 and VIP60134



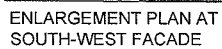
 **Subject Property**





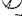




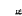



**Schedule C**

**LANDSCAPE PLAN**



### PLANT SCHEDULE

Category	QID	QID	QID	QID	QID
	15	15	Collection Components Store / Collection Store Capabilities	0.0.0	3.0.0
	3	3	Free Sample Collection / Sample Store	0.0.0	3.0.0
	2	2	Free Sample Collection / Sample Store	0.0.0	3.0.0
	15	15	Physical Components / Physical Components Store	0.0.0	3.0.0
	40	40	Source products / Products	0.0.0	3.0.0
	40	40	Source products / Products	0.0.0	3.0.0
	15	15	Collection Components / Collection Components Store	0.0.0	3.0.0
	15	15	Collection Components / Collection Components Store	0.0.0	3.0.0
	15	15	Collection Components / Collection Components Store	0.0.0	3.0.0
	15	15	Collection Components / Collection Components Store	0.0.0	3.0.0
	15	15	Collection Components / Collection Components Store	0.0.0	3.0.0
	15	15	Collection Components / Collection Components Store	0.0.0	3.0.0
	15	15	Collection Components / Collection Components Store	0.0.0	3.0.0
	15	15	Collection Components / Collection Components Store	0.0.0	3.0.0
	15	15	Collection Components / Collection Components Store	0.0.0	3.0.0
	15	15	Collection Components / Collection Components Store	0.0.0	3.0.0
	15	15	Collection Components / Collection Components Store	0.0.0	3.0.0
	15	15	Collection Components / Collection Components Store	0.0.0	3.0.0
	15	15	Collection Components / Collection Components Store	0.0.0	3.0.0
	15	15	Collection Components / Collection Components Store	0.0.0	3.0.0
	15	15	Collection Components / Collection Components Store	0.0.0	3.0.0
	15	15	Collection Components / Collection Components Store	0.0.0	3.0.0
	15	15	Collection Components / Collection Components Store	0.0.0	3.0.0
	15	15	Collection Components / Collection Components Store	0.0.0	3.0.0
	15	15	Collection Components / Collection Components Store	0.0.0	3.0.0
	15	15	Collection Components / Collection Components Store	0.0.0	3.0.0
	15	15	Collection Components / Collection Components Store	0.0.0	3.0.0
	15	15	Collection Components / Collection Components Store	0.0.0	3.0.0
	15	15	Collection Components / Collection Components Store	0.0.0	3.0.0
	15	15	Collection Components / Collection Components Store	0.0.0	3.0.0

1 ALL BASE LINEWORK FROM CALLISON ARCHITECTURE LTD.



#	DESCRIPTION	DATE
01	ISSUE ORDER	10.10.22
02	FINALISE ORDER WORK	10.11.21
03	ISSUE ORDER	10.11.21

Drawing Set:  
**LANDSCAPE**  
Drawing Type:  
**PLANTING PLAN OVERALL**  
Drawn By: SC/PC  
Date: November 22, 2013  
Sheet Number:

L-02

**DICKINSON CROSSING  
BUILDING A REMODEL**  
NANAIMO BRITISH COLUMBIA

**CAL Architecture, Inc.**  
1420 Fifth Avenue #2400  
Seattle, Washington 98101-2343  
**T** 206 623 4646  
**F** 206 623 4625  
[www.callison.com](http://www.callison.com)  
Project # 214414.00 & 214621.00

320-256 Wallace Street  
Nanaimo, BC V9S 1K2  
P. 250 754-5631  
F. 250 754-1930  
[www.golder.com](http://www.golder.com)  
Project # 13-1444-0065



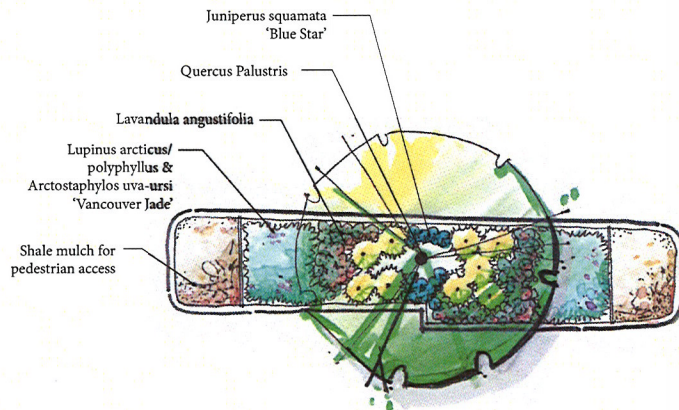
Development Permit No. DP000859  
6900 Island Highway North

**Schedule D**  
**LANDSCAPE PLAN**  
**FEATURES**

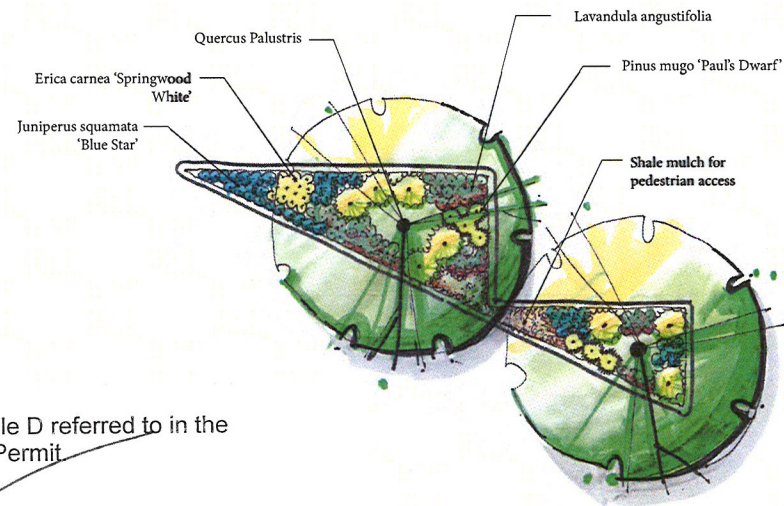
FRONT BUILDING ELEVATION (FROM PARKING LOT)



TYPICAL ISLAND - NORTH SIDE OF PARKING LOT



TYPICAL ISLAND - SOUTH SIDE OF PARKING LOT



This is Schedule D referred to in the  
Development Permit

General Manager  
Corporate Services

2014-JAN-11  
Date

DICKINSON CROSSING  
BUILDING A REMODEL  
NANAIMO  
BRITISH COLUMBIA

CAL Architecture, Inc.  
1000 West Broadway  
Suite 100, Vancouver, BC V6H 1A1  
Tel: 604 681 4468  
www.calarch.com  
Project # 21411.00 & 21462.00

Date:

Revisions:

Drawing Set:

Drawing Type:

Drawn By: SC

Date: October 27, 2013

Sheet Number:

L-04 ELEVATION  
& TYP. ISLAND  
LAYOUT

Sheet Date: Tue, 22 Oct 2013



Development Permit No. DP000859  
6900 Island Highway North

Schedule E

LANDSCAPE PLAN  
FEATURES AND PLANTING MATERIAL

MAIN PLANT PALETTE

Deciduous Trees



Quercus Palustris  
(Pin Oak)



Populus tremula 'Erecta'  
(Swedish Columnar Aspen)



Cupressus sempervirens  
'Stricta' (Italian Cypress)



Pinus cembra 'Columnaris'  
(Columnar Swiss Stone Pine)

Coniferous Trees

Shrubs & Perennials



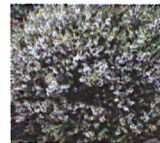
Thuja occidentalis  
'Golden Globe' (Golden  
Globe Cedar)



Chamaecyparis pisifera  
'Golden Mop' (Golden Mop  
Japanese Falsecypress)



Pinus mugo 'Paul's Dwarf' (Compact  
Mugo Pine)



Erica carnea 'Springwood  
White' (Springwood  
White Heather)



Juniperus squamata 'Blue Star'  
(Blue Star Juniper)

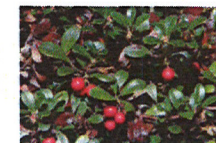


Lavandula angustifolia (English  
Lavender)

Native Edge Mix



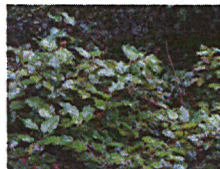
Lupinus arcticus/polyphyllus  
(Purple Lupin)



Arctostaphylos uva-ursi  
'Vancouver Jade' (Kinnikinnick)

NATIVE PLANT MIX

Native Plant Mix



Gaultheria shallon (Salal)



Polystichum munitum (Sword Fern)



Lupinus arcticus/polyphyllus  
(Purple Lupin)



Blechnum spicant (Deer Fern)

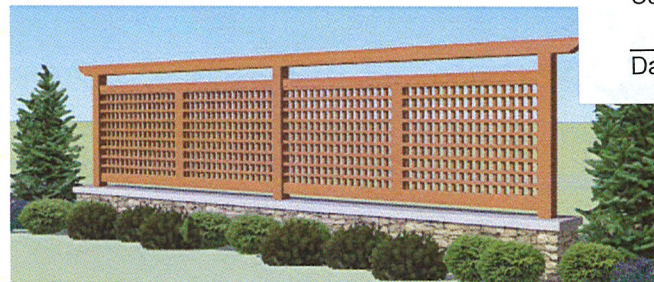


Mahonia nervosa (Oregon Grape)



Arctostaphylos uva-ursi  
'Vancouver Jade' (Kinnikinnick)

SITE FEATURES



Trellis Screen Wall



Landscape Boulder



Shale Mulch



Bike Rack



Waste Receptacle

This is Schedule E referred to in the  
Development Permit.

General Manager  
Corporate Services

Date

DICKINSON CROSSING  
BUILDING A REMODEL  
NANAIMO  
BRITISH COLUMBIA

CAL Architecture, Inc.  
1000 West Broadway  
Suite 100, Vancouver BC V6H 1A3  
T 604 683 4648  
www.calinc.com  
Project # 214114.00 & 214621.00

Seal:

Revisions:

Drawing Set:

Drawn By: SC

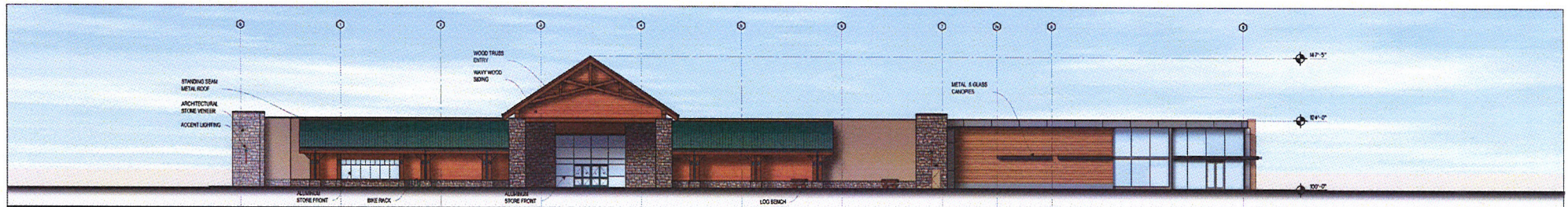
Date: October 22, 2015

Sheet Number:

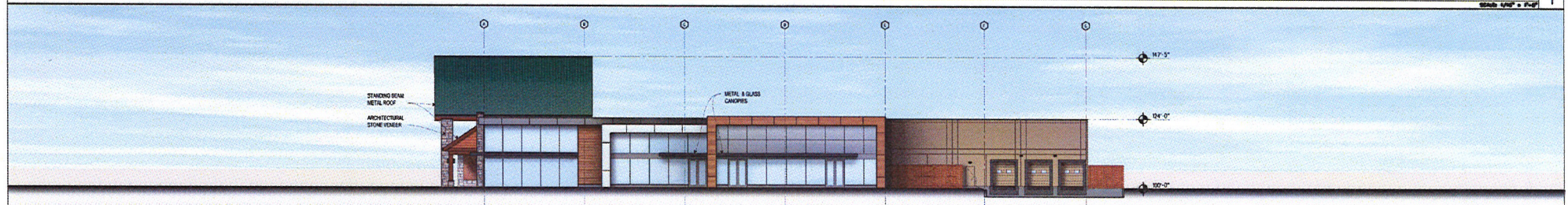
L-03 PLANT  
PALETTE & SITE  
FEATURES

Print Date: Tue, 09 Dec 2015

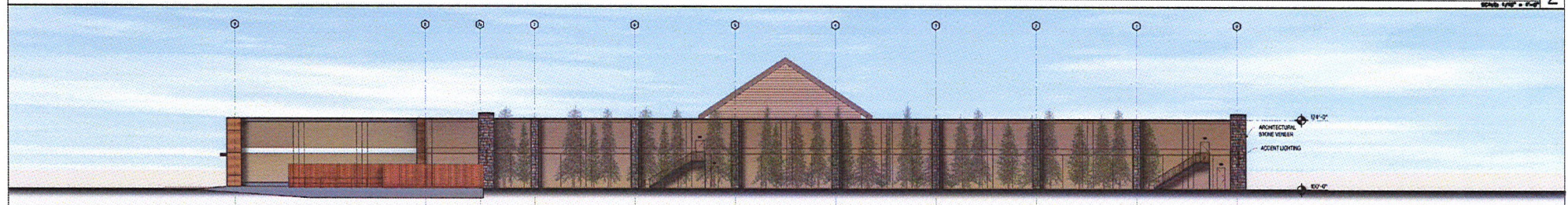




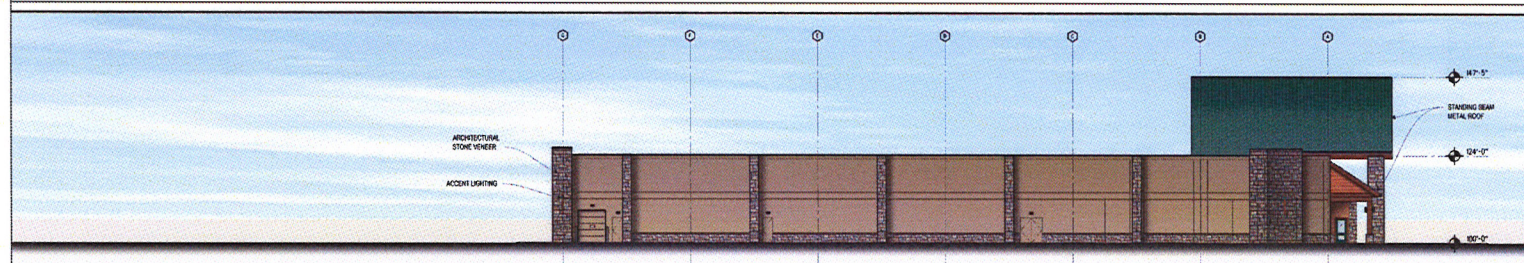
**SOUTH ELEVATION** 1  
Scale: 1/8" = 1'-0"



**EAST ELEVATION** 2  
Scale: 1/8" = 1'-0"



**NORTH ELEVATION** 3  
Scale: 1/8" = 1'-0"



**WEST ELEVATION** 4  
Scale: 1/8" = 1'-0"

This is Schedule F referred to in the Development Permit.

General Manager  
Corporate Services

2014-July-11  
Date

**DICKINSON CROSSING  
BUILDING 'A' REMODEL**

**NANAIMO, BC  
EXTERIOR ELEVATIONS  
OCTOBER 23, 2013**

Development Permit No. DP000859  
6900 Island Highway North

**Schedule F  
BUILDING ELEVATIONS**

