

New Supportive Housing for Nanaimo

Everyone needs a home.

BC Housing, the City of Nanaimo, and Pacifica are working together to address the urgent need for housing and supports for individuals who are experiencing or at risk of homelessness in Nanaimo. The plan is to provide up to 44 units of new supportive housing with 24/7 onsite supports to be located at 1425 Cranberry Avenue.

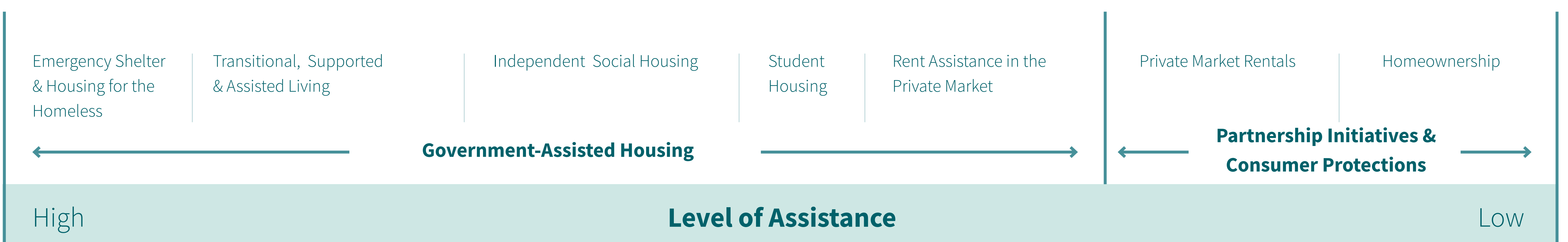
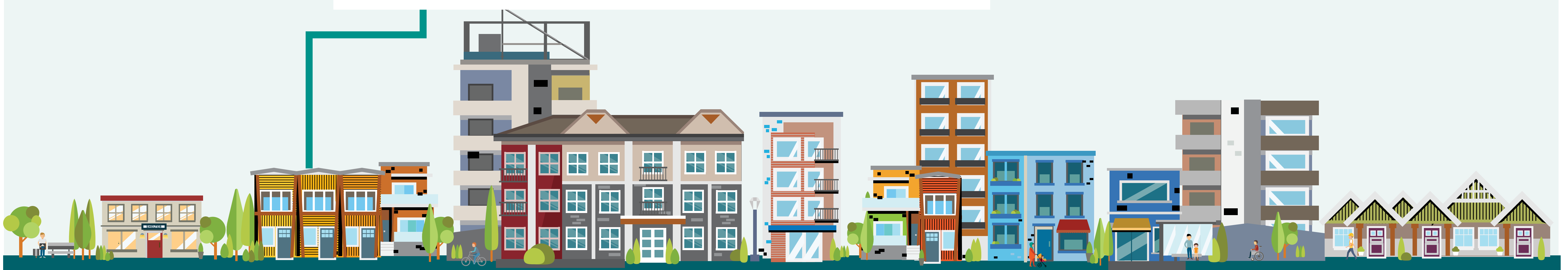
The Building

- Three-storey walk-up apartment
- Approximately 44 homes
- Self-contained homes with a private bathroom and kitchen
- Common amenity space for meals and support services
- Efforts will be made to ensure that the housing and the site improvements fit into the style of the neighbourhood
- 24/7 staffing and support services

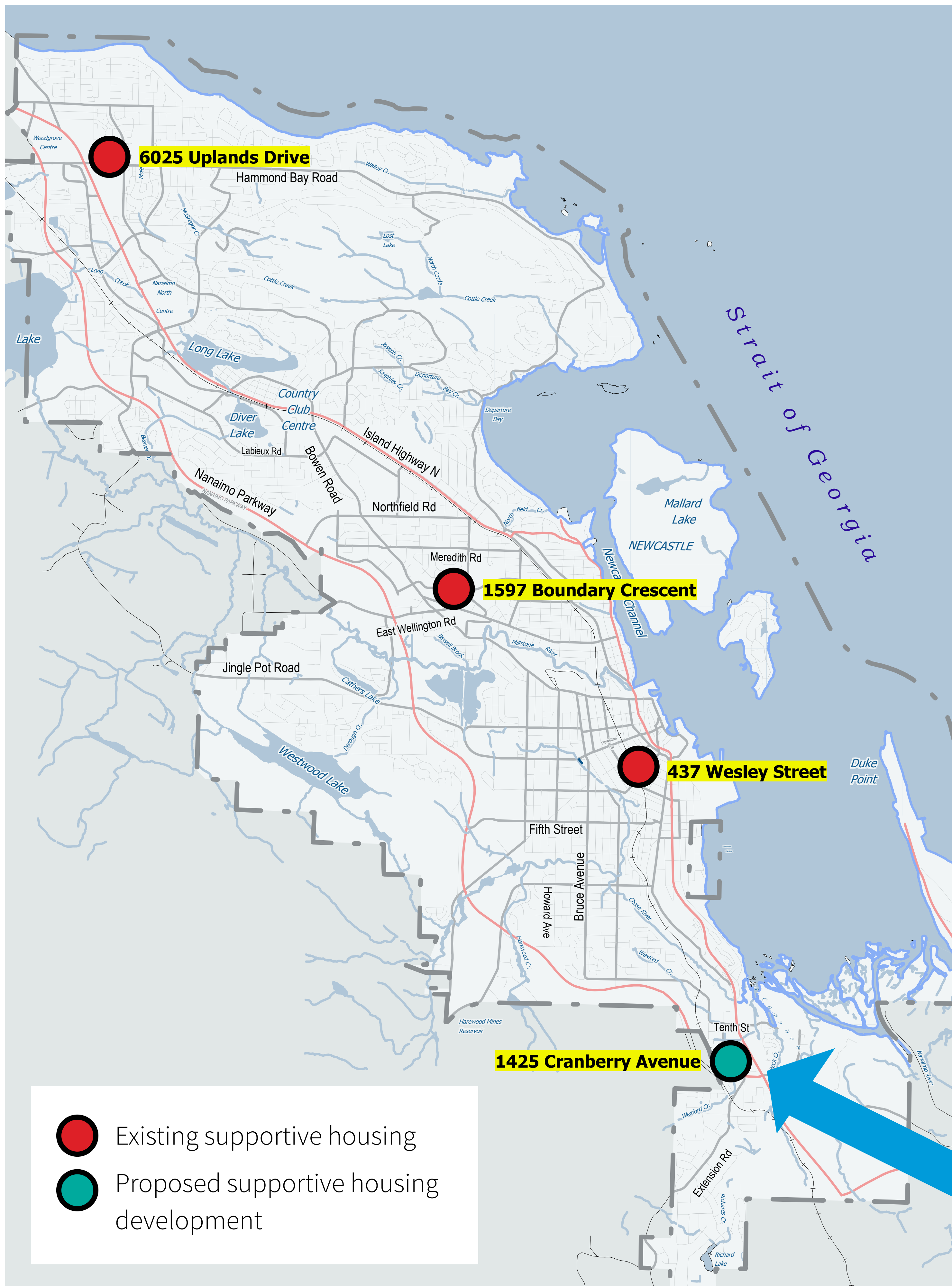
The Residents

- Individuals who are experiencing or are at risk of homelessness, including seniors and people with disabilities
- Each individual will go through a vulnerability assessment process to ensure that adequate supports are in place
- There will be eligibility requirements around income, homelessness, and required supports
- Residents will be connected to supports such as life and employment skills, and health and wellness services

NEW up to **44** supportive housing units added



Why Here?



A key factors in making supportive housing a success is proximity to amenities and accessibility to transit. The City of Nanaimo uses this key locational criteria in identifying sites for social housing in the community.



Locational criteria considered in identifying sites for social housing

Proximity to amenities and transit

Connection to community services and potential employment areas

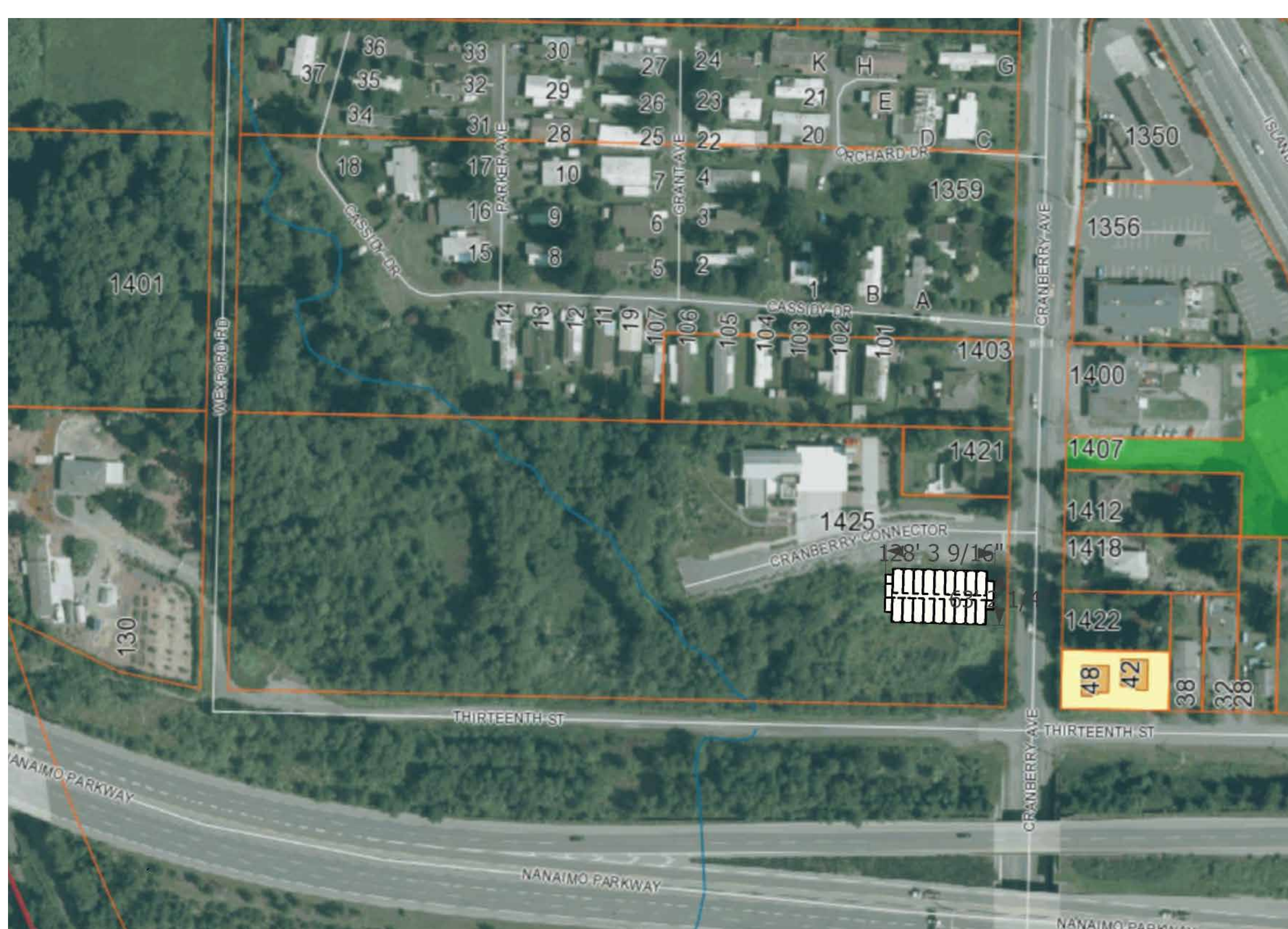
In a residential area

City-owned site

Fair distribution of affordable housing across the community

1425 Cranberry Avenue

Example A - Cranberry Ave. Access



Example B - Thirteenth St. Access



These examples show different possible placements of the proposed building to show how it could fit with the neighbourhood. Topography, drainage and road access will shape the siting of the proposed building. This is subject to change during the development process

Support Services



24/7 staffing and support services



Meals Provided

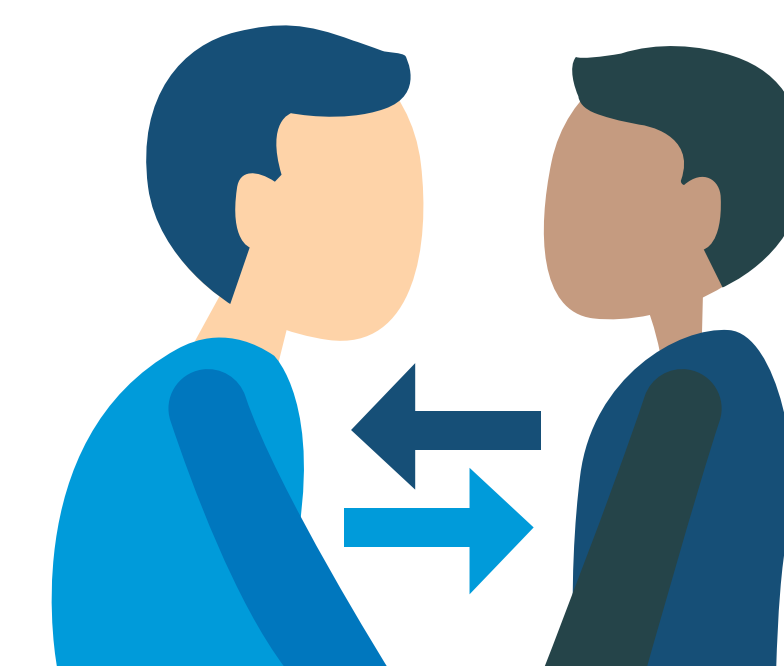
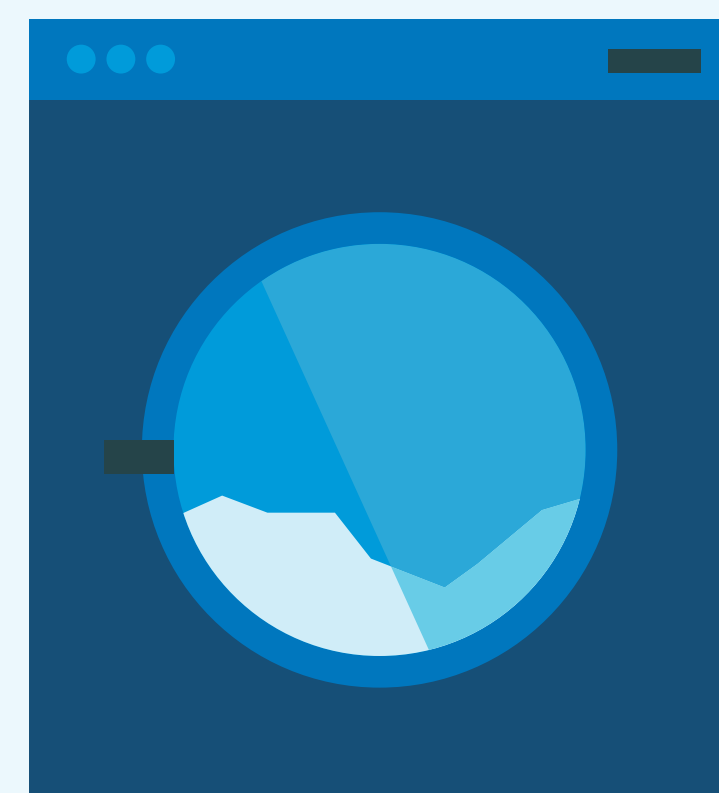


Safe place to sleep



Hot Showers

Laundry



Social Connection



Accessible for a diverse group



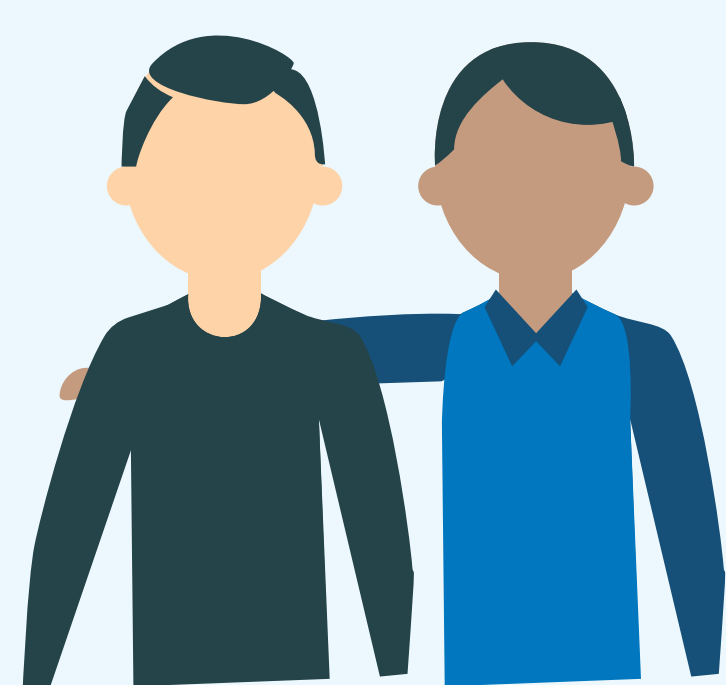
Connect to local community services



Peer and low-barrier employment opportunities



Referral to healthcare and mental health services



Trauma-informed support and care

to assist people in stabilizing and creating plans to move from homelessness to successfully housed.



Outreach worker assists

with income issues and set up apartment viewing and secure housing.

The safety of our future residents, staff and the surrounding community is a priority for BC Housing and Pacifica. The housing will have staff available 24 hours a day, 7 days a week to ensure that residents are supported and that any concerns are addressed in a timely manner.

Pacifica Housing has been successfully and seamlessly integrating supported housing into a variety of Vancouver Island communities for over 25 years and is committed to being a good neighbour. If there are concerns or problems that occur with specific individuals, Pacifica is committed to working with the community, local businesses and the RCMP on solutions.

Next Steps



Community Open House

January 31, 2018



Lease Agreement

February 2018



Development Application

March 2018



Development Permit

April 2018



Sitework and Installation

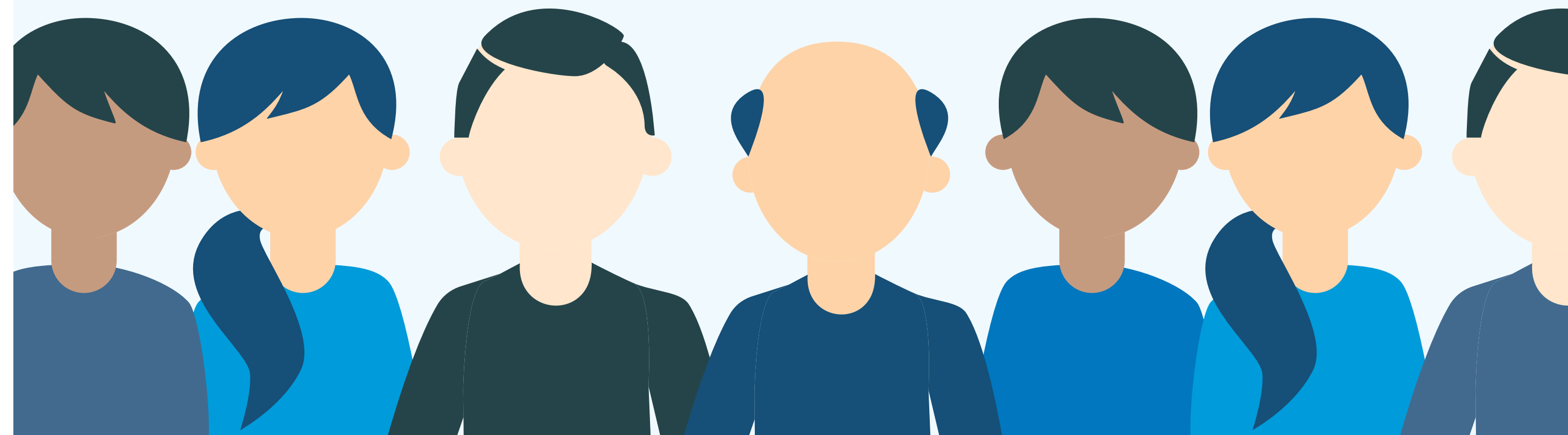
May 2018



Modular housing is scheduled to be ready for occupancy

Fall 2018

Community Need



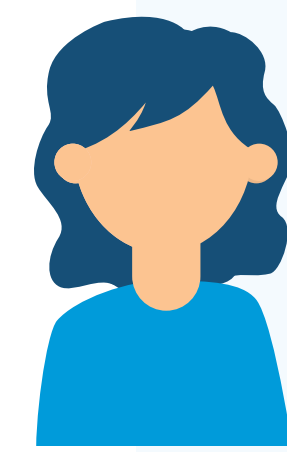
174 homeless individuals



122 of the respondents have lived in Nanaimo for more than a year



69 % are male



40 is the average age

How Can I Provide Input?



Email

communityrelations@bchousing.org

Comments will be shared with all project partners:



BC Housing, as part of the Province's modular-housing program, will build the proposed supportive housing, provide operational and capital funding to develop up to 44 units on city-owned land.

BC Housing works in partnership with the private and non-profit sectors, provincial health authorities and ministries, other levels of government and community groups to develop a range of housing options.



The City of Nanaimo is providing land to accommodate the modular housing project.

The City of Nanaimo adopted an Action Plan (Nanaimo's Response to Homelessness Action Plan) in 2008. The Plan identifies the needs and priorities for long-term housing and support services for the diversity of people who are homeless or at-risk of homelessness in Nanaimo.



Pacifica Housing will operate the 44 new modular housing units and provide 24/hr support services.

Pacifica Housing is a non-profit charitable organization that provides affordable housing for low income families, persons with a disability and adults who are homeless or at risk of becoming homeless. We believe in 'housing first' and work to break the cycle of homelessness by enabling families and single adults to achieve permanent housing so they can live with dignity, safety and stability.

