

Saturday, May 12<sup>th</sup>, 10am-2pm



Welcome!



Learn more about the

GEORGIA GREENWAY

... FOR ALL AGES AND ABILITIES!



# Introduction

GEORGIA GREENWAY  
... FOR ALL AGES AND ABILITIES!

## WHAT IS THE GEORGIA GREENWAY?

The Georgia Greenway is a proposed 3.1 km pedestrian and cycling friendly route through Harewood. It will link a number of key destinations across the community including schools, parks, sports fields, and commercial areas.



Once complete, Phase I of the Georgia Greenway will provide a pedestrian and cyclist connection through Harewood Centennial Park between Sixth Street and Seventh Street, providing greater accessibility to the Park and connectivity for the Harewood community.



## BACKGROUND

Nanaimo City Council selected **Phase 1** of the Georgia Greenway as one of the **Top 5 Key Capital Projects** and Initiatives in the 2016-2019 Strategic Plan Update.

The Georgia Greenway is supported by:

- ▶ The Harewood Neighbourhood Plan;
- ▶ The Official Community Plan;
- ▶ The Harewood Centennial Park Master Plan; and
- ▶ The Nanaimo Transportation Master Plan.

## PHASE 1 | OVERVIEW

Phase One will be a new multi-use trail through Harewood Centennial Park.

It stretches a distance of approximately 0.5 km between Sixth Street and Seventh Street.

It includes a new pedestrian and cycling bridge over the Chase River.

Phase I will include trail lighting and safety enhancements at the intersection crossings of Georgia Avenue and Sixth Street, and Georgia Avenue and Seventh Street.

Council has approved \$1.2 million for phase one.

## WHAT IS A NEIGHBOURHOOD GREENWAY?

Neighbourhood greenways are active transportation corridors that promote greater pedestrian and cyclist activity. They support people of all ages and abilities to get around in a healthy and sustainable way.

# The Big Picture

GEORGIA GREENWAY  
... FOR ALL AGES AND ABILITIES!

## GEORGIA GREENWAY OVERALL PLAN (including future phases)

The Georgia Greenway corridor will span a distance of 3.1 km in total once fully completed.

It will be composed of a combination of off-road paths and low-volume roads, creating a comfortable experience for all ages, abilities, and confidence levels.



FUTURE PHASES

PHASE 1

CHASE RIVER CROSSING

FUTURE PHASES

# Planning Context

GEORGIA GREENWAY  
... FOR ALL AGES AND ABILITIES!

## THE PROJECT IS SUPPORTED BY:

- ▶ The 2016-2019 Strategic Plan Update
- ▶ The Harewood Neighbourhood Plan
- ▶ The Official Community Plan
- ▶ The Harewood Centennial Park Master Plan
- ▶ The Nanaimo Transportation Master Plan



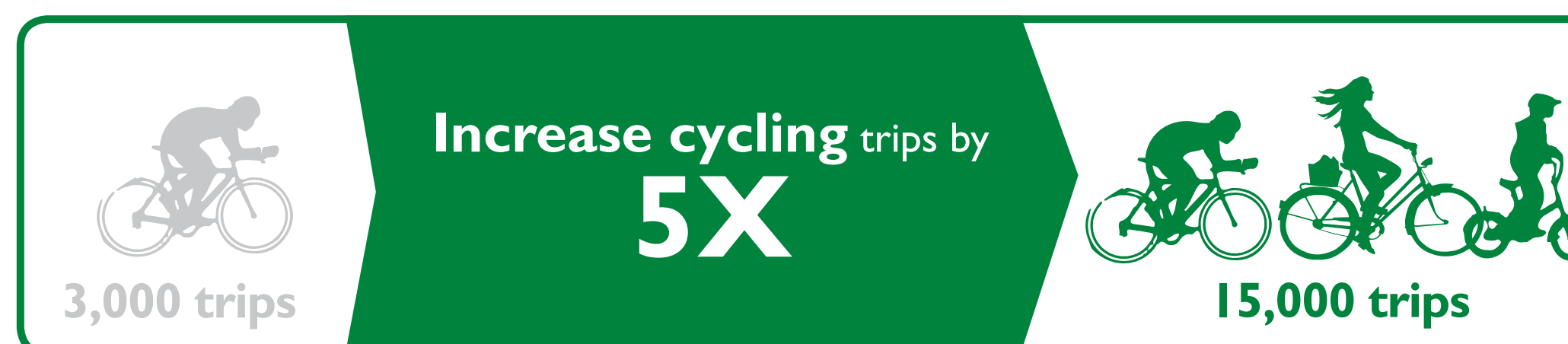
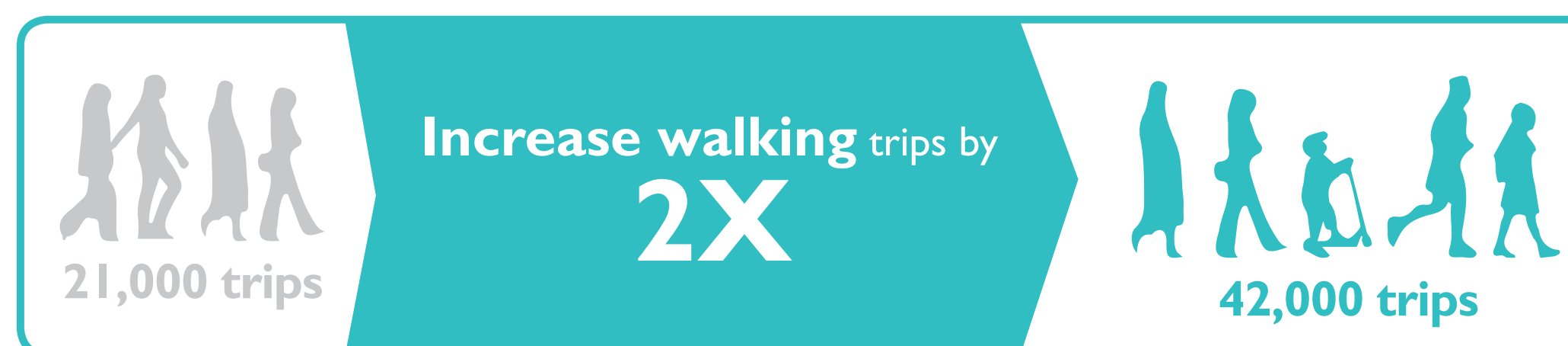
## Harewood Neighbourhood Plan:

This Plan was adopted in 2013 and includes an Urban Design Framework that is intended to provide overall direction and help guide future development within Harewood. One of the key strategies identified in the plan is to:

“ Create a neighbourhood bikeway on Georgia Avenue, including a multi use path across Harewood Centennial Park, and a multi modal bridge across Chase River. ”

## Nanaimo Transportation Master Plan:

This Plan was adopted in 2014 and seeks to significantly increase sustainable modes of transportation within the City and sets a number of key objectives that are summarized by the graphics below.



“ As part of the Georgia Avenue bikeway, create a new 4.0 metre wide multi-use pathway across Harewood Centennial Park, with a new multi-modal bridge over the Chase River.”

– Page 127, Harewood Neighbourhood Plan

## THE ROLE OF THIS PROJECT

Through completing projects like the Georgia Greenway, the City takes one step closer to making goals reality and creating a livable and environmentally sustainable community where walking and cycling are key components of the transportation system.

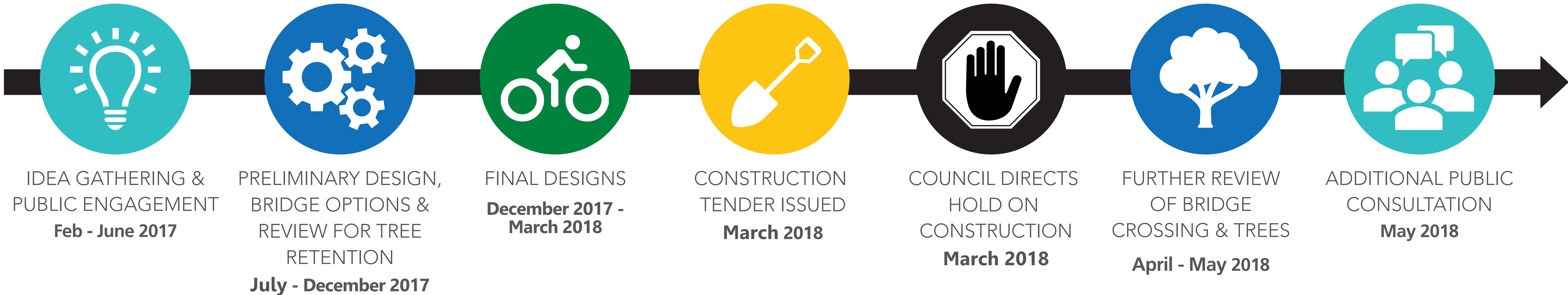
Our goal is to create a comfortable experience for users of all ages, abilities, and confidence levels by incorporating a variety of pedestrian and cycling facilities such as multi-use pathways, traffic calmed local streets, and improved road crossings.



# Phase 1 Update

GEORGIA GREENWAY  
... FOR ALL AGES AND ABILITIES!

## Project Process Diagram (Phase 1)



## SO WHAT DID WE REVIEW?

### FURTHER TREE ASSESSMENT:

- ▶ An independent Professional Forester completed specialized testing of the two large Cottonwood trees to provide data about their inner condition.
- ▶ A detailed risk assessment was completed that concluded both of these trees have decay within their trunks, and both would pose high risk to people using the bridge and the bridge structure itself.
- ▶ The Professional Forester also commented that the likelihood of failure of these two trees after construction of a bridge could be as little as two years.
- ▶ The full report is available on the project webpage.



Figure: Tomography set-up

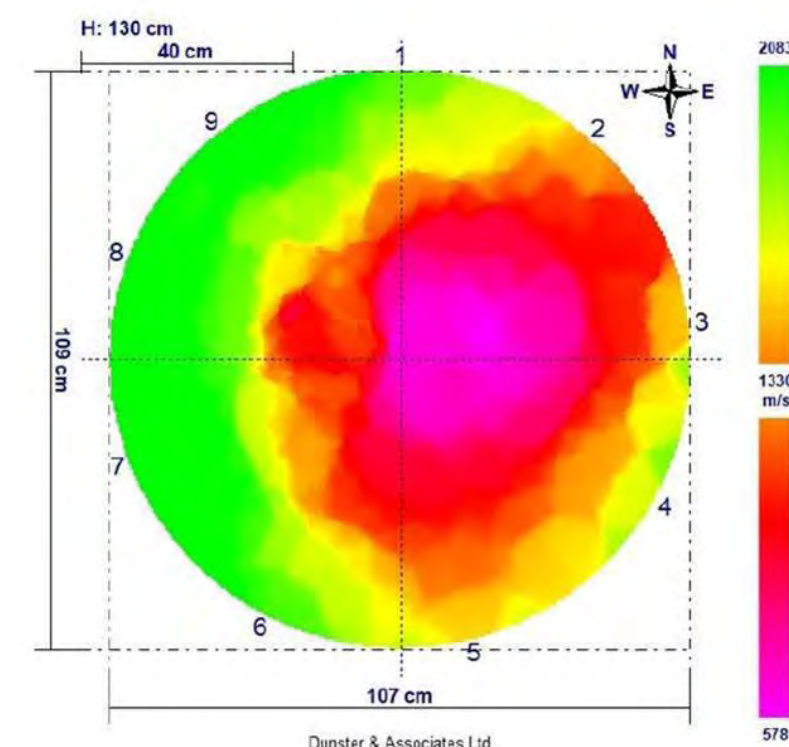


Figure: Tomogram of Tree #2

### BRIDGE WIDTH REVIEW:

- ▶ The proposed bridge width was reviewed and it conforms with the objectives identified in the Harewood Neighbourhood Plan for a multi-modal bridge.
- ▶ The designed width also meets recommendations in the City of Nanaimo's Bicycle Facility Design Guidelines which stipulates that multi-use paths should be a minimum of 4.0m wide.
- ▶ Reducing the bridge width is not in conformance with the Neighbourhood Plan and City Design Guidelines. The results of this new survey will be used to confirm the multi use intent and bridge width designed.

## WHAT DO YOU THINK?

Please complete a survey to let us know how you think the Georgia Greenway should proceed:

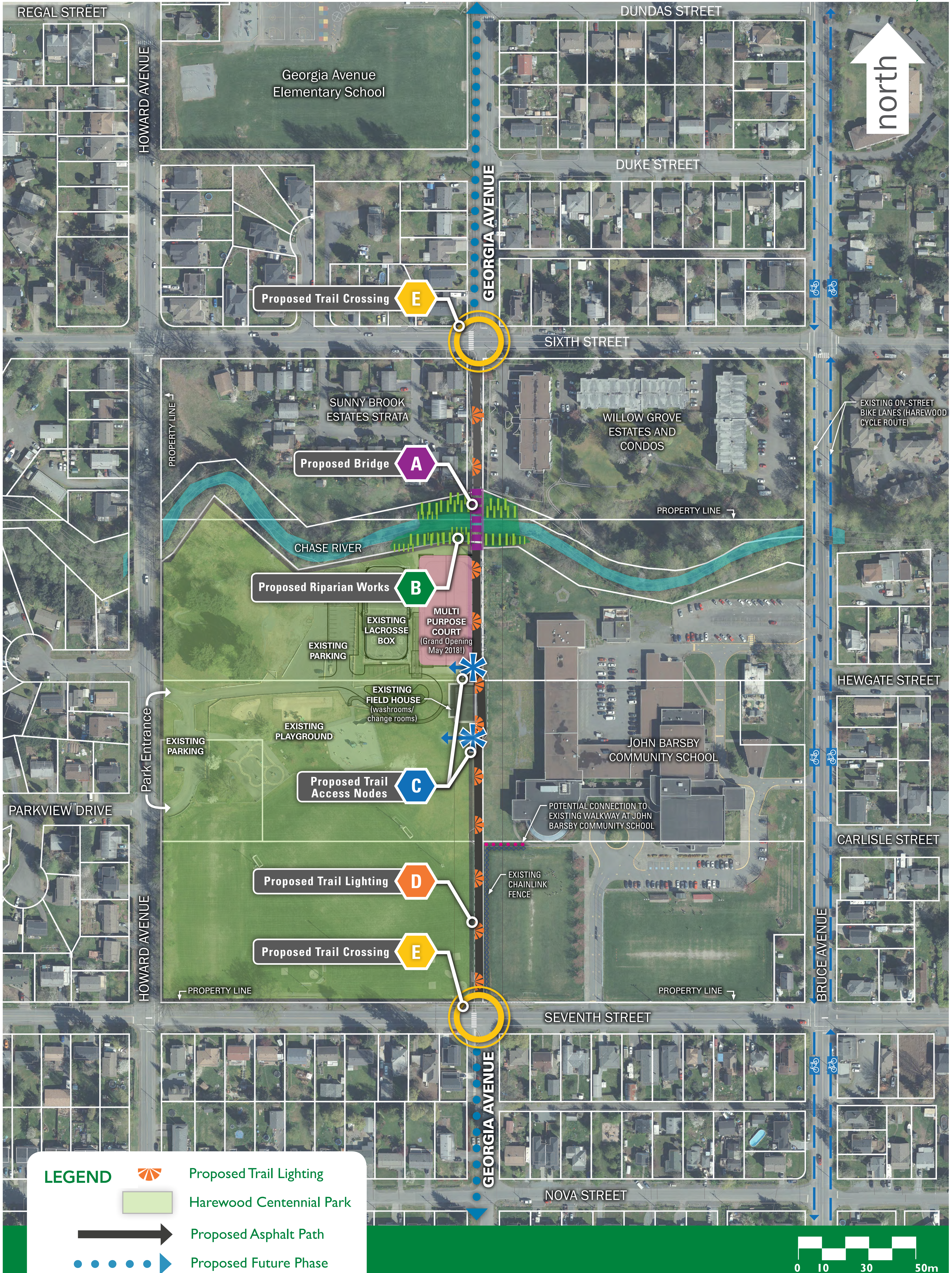
- ▶ Do you support the development of a Neighbourhood Greenway including a multi-use bridge over the Chase River and path through the park?
- ▶ Do you support the removal of select trees in order for the bridge to be built?

**PLEASE COMPLETE A SURVEY BY MAY 13!**


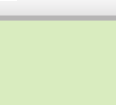


Visit [www.nanaimo.ca/goto/GeorgiaGreenway](http://www.nanaimo.ca/goto/GeorgiaGreenway) for more details

# Phase 1 CONCEPT PLAN

GEORGIA GREENWAY  
... FOR ALL AGES AND ABILITIES!



**LEGEND**

-  Proposed Trail Lighting
-  Harewood Centennial Park
-  Proposed Asphalt Path
-  Proposed Future Phase

