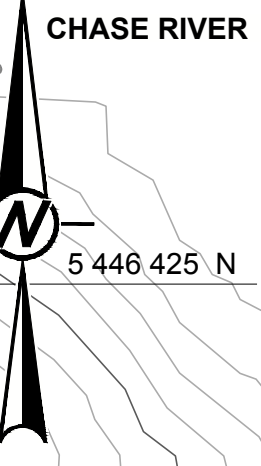


- LEGEND**
- 2015 SURVEY BOUNDARY
  - RESERVOIR (AT REGULAR OPERATING LEVEL)
  - EXISTING PATHWAY

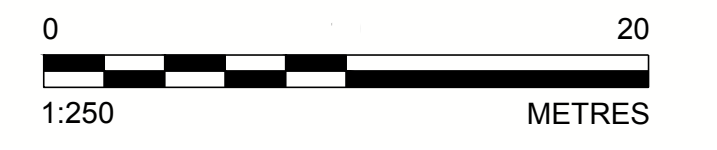
**NOTE**

1. SECANT PILE WALL DETAILS SHOWN ON HEROLD ENGINEERING DRAWINGS S101 AND S202.

- REFERENCES**
1. BATHYMETRIC AND TOPOGRAPHIC FROM CITY OF NANAIMO, CAD FILE: ACAD-C003-0 (BOUND).dwg, DATED: DECEMBER 20, 2013.
  2. TOPOGRAPHIC DATA FROM HEROLD ENGINEERING, CAD FILE: collier park bwer dam 2003.dwg, DATED: OCTOBER 20, 2003.
  3. WILLIS CUNLIFFE TAI & COMPANY LTD., PDF FILE: Appendix C - 1980 Repairs As-built.pdf, DATED: JULY 1978.
  4. SEISMIC HAZARD ASSESSMENT MIDDLE AND LOWER CHASE DAMS, (EBA 2010).



ISSUED FOR REVIEW



Path: \\golder-gis\gis\gaurby\CAD\_GIS\Clients\City\_of\_Nanaimo\98\_PROJECTS\13-1447-0516\02\_PRODUCTION\4000\4500\_DRAWINGS\1 File Name: 1314470516-4000-4500-G-4.dwg

CLIENT		CITY OF NANAIMO				
CONSULTANT		<b>Golder Associates</b> VANCOUVER OFFICE SUITE 200 - 2920 VIRTUAL WAY VANCOUVER, BC, V5M 0C4 CANADA [+1] (604) 296 4200 www.golder.com				
A	2015-10-28	ISSUED FOR REVIEW	JG	SRR	RM	BD
REV.	YYYY-MM-DD	DESCRIPTION	DESIGNED	PREPARED	REVIEWED	APPROVED

PROJECT		COLLIERY DAMS - AUXILIARY SPILLWAY NANAIMO, B.C.	
TITLE		GENERAL ARRANGEMENT PLAN	
PROJECT NO.	PHASE	REV.	of
13-1447-0516	4000	A	FIGURE G-04

25 mm IF THIS MEASUREMENT DOES NOT MATCH WHAT IS SHOWN, THE SHEET SIZE HAS BEEN MODIFIED FROM: ANSI D