

## **NOTICE OF SPECIAL EVENT**

**EVENT:**                   **Commercial Street Night Market**

**DATE:**                   Jun-28 to Aug-27 (each Thursday)

**TIME:**                   2:00pm - 10:00pm (incl set/clean up)

**LOCATION:**               **Per attached maps**

**SEE MAP BELOW**

Date: 04/08/2026 Author: Brennah Thomas-Shipway BCCSA # SRN2717 Project: Nanaimo - Night Market - Commercial St. Closure Drawing : 001 Speed: 50 km



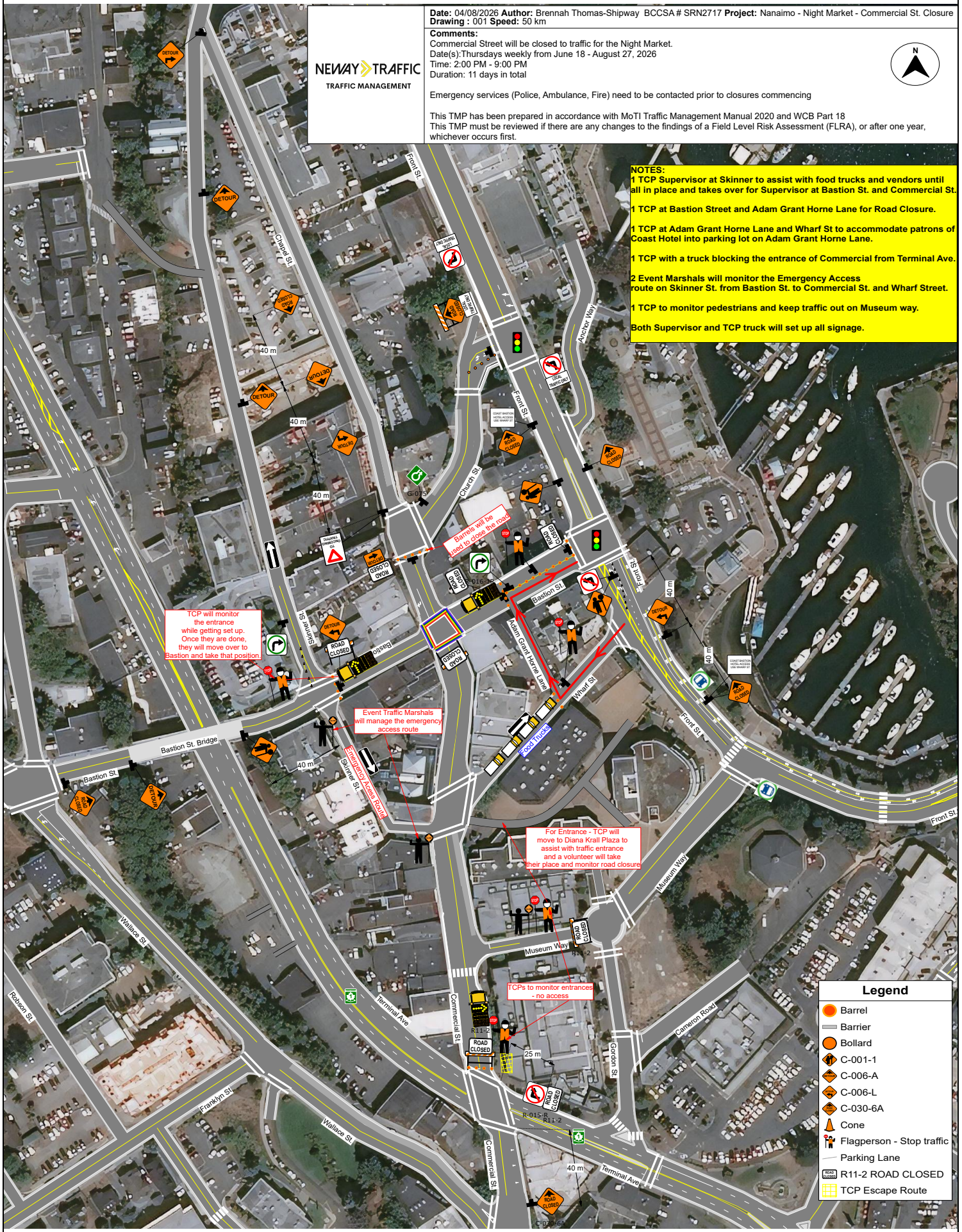
**Comments:**  
 Commercial Street will be closed to traffic for the Night Market.  
 Date(s): Thursdays weekly from June 18 - August 27, 2026  
 Time: 2:00 PM - 9:00 PM  
 Duration: 11 days in total



Emergency services (Police, Ambulance, Fire) need to be contacted prior to closures commencing

This TMP has been prepared in accordance with MoTI Traffic Management Manual 2020 and WCB Part 18  
 This TMP must be reviewed if there are any changes to the findings of a Field Level Risk Assessment (FLRA), or after one year, whichever occurs first.

**NOTES:**  
 1 TCP Supervisor at Skinner to assist with food trucks and vendors until all in place and takes over for Supervisor at Bastion St. and Commercial St.  
 1 TCP at Bastion Street and Adam Grant Horne Lane for Road Closure.  
 1 TCP at Adam Grant Horne Lane and Wharf St to accommodate patrons of Coast Hotel into parking lot on Adam Grant Horne Lane.  
 1 TCP with a truck blocking the entrance of Commercial from Terminal Ave.  
 2 Event Marshals will monitor the Emergency Access route on Skinner St. from Bastion St. to Commercial St. and Wharf Street.  
 1 TCP to monitor pedestrians and keep traffic out on Museum way.  
 Both Supervisor and TCP truck will set up all signage.



TCP will monitor the entrance while getting set up. Once they are done, they will move over to Bastion and take that position

Event Traffic Marshals will manage the emergency access route

Barrels will be used to close the roads

For Entrance - TCP will move to Diana Krall Plaza to assist with traffic entrance and a volunteer will take their place and monitor road closure

TCPs to monitor entrances no access

Legend	
	Barrel
	Barrier
	Bollard
	C-001-1
	C-006-A
	C-006-L
	C-030-6A
	Cone
	Flagperson - Stop traffic
	Parking Lane
	R11-2 ROAD CLOSED
	TCP Escape Route

**Date:** 04/08/2026 **Author:** Brennah Thomas-Shipway **BCCSA #** SRN2717 **Project:** Nanaimo - Night Market - Commercial St. Closure  
**Drawing :** 001 **Speed:** 50 km

**Comments:**  
 Commercial Street will be closed to traffic for the Night Market.  
 Date(s): Thursdays weekly from June 18 - August 27, 2026  
 Time: 2:00 PM - 9:00 PM  
 Duration: 11 days in total

Emergency services (Police, Ambulance, Fire) need to be contacted prior to closures commencing

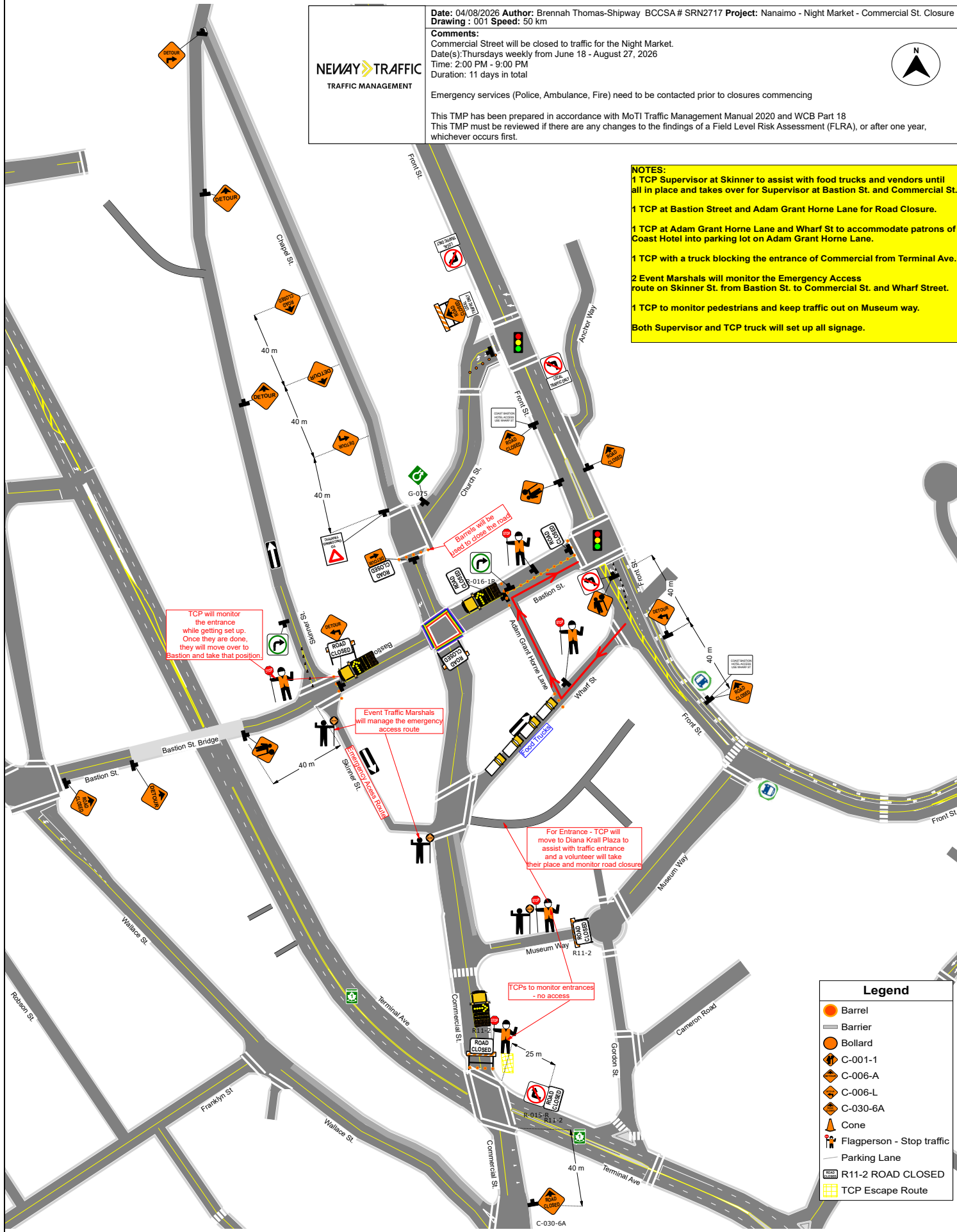
This TMP has been prepared in accordance with MoTI Traffic Management Manual 2020 and WCB Part 18  
 This TMP must be reviewed if there are any changes to the findings of a Field Level Risk Assessment (FLRA), or after one year, whichever occurs first.



**NOTES:**

- 1 TCP Supervisor at Skinner to assist with food trucks and vendors until all in place and takes over for Supervisor at Bastion St. and Commercial St.
- 1 TCP at Bastion Street and Adam Grant Horne Lane for Road Closure.
- 1 TCP at Adam Grant Horne Lane and Wharf St to accommodate patrons of Coast Hotel into parking lot on Adam Grant Horne Lane.
- 1 TCP with a truck blocking the entrance of Commercial from Terminal Ave.
- 2 Event Marshals will monitor the Emergency Access route on Skinner St. from Bastion St. to Commercial St. and Wharf Street.
- 1 TCP to monitor pedestrians and keep traffic out on Museum way.

Both Supervisor and TCP truck will set up all signage.



**Legend**

- Barrel
- Barrier
- Bollard
- C-001-1
- C-006-A
- C-006-L
- C-030-6A
- Cone
- Flagperson - Stop traffic
- Parking Lane
- R11-2 ROAD CLOSED
- TCP Escape Route

