

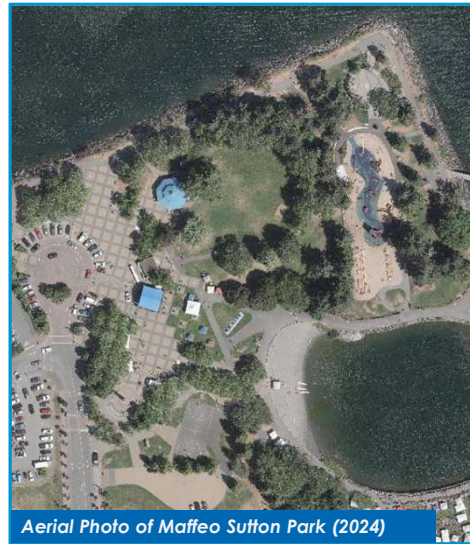


## MAFFEO SUTTON PARK AMENITY BUILDING



### ABOUT MAFFEO SUTTON PARK

- Signature waterfront park with over 350 events annually and over 18,000 patrons on Canada Day.
- Park Master Plan supports additional washroom facilities, wayfinding, public art, and enhancements to support special events and general public use.



Aerial Photo of Maffeo Sutton Park (2024)



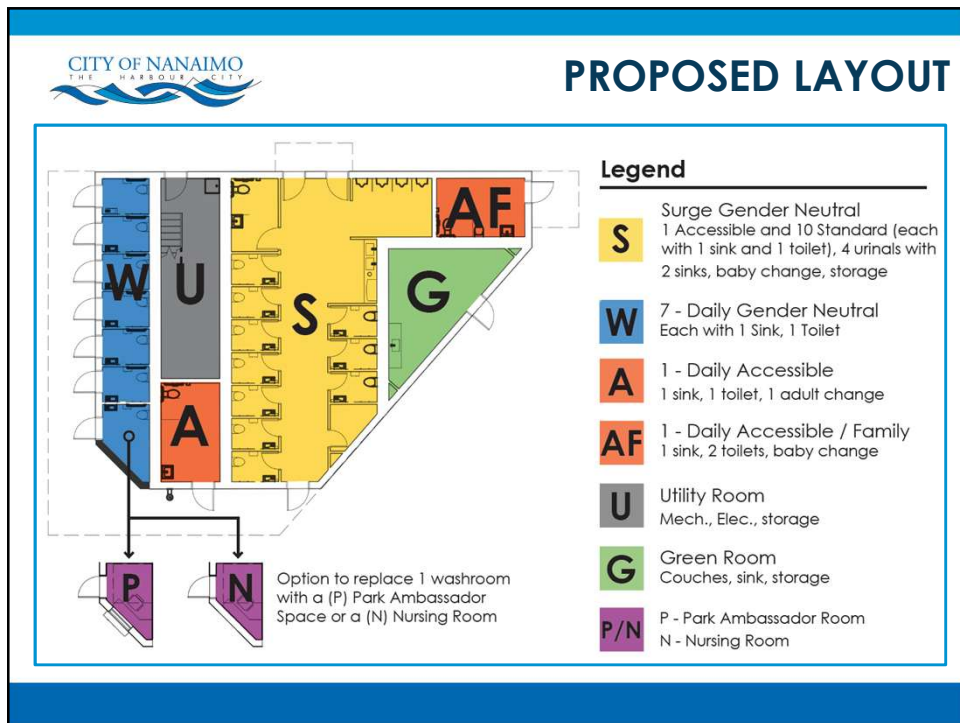
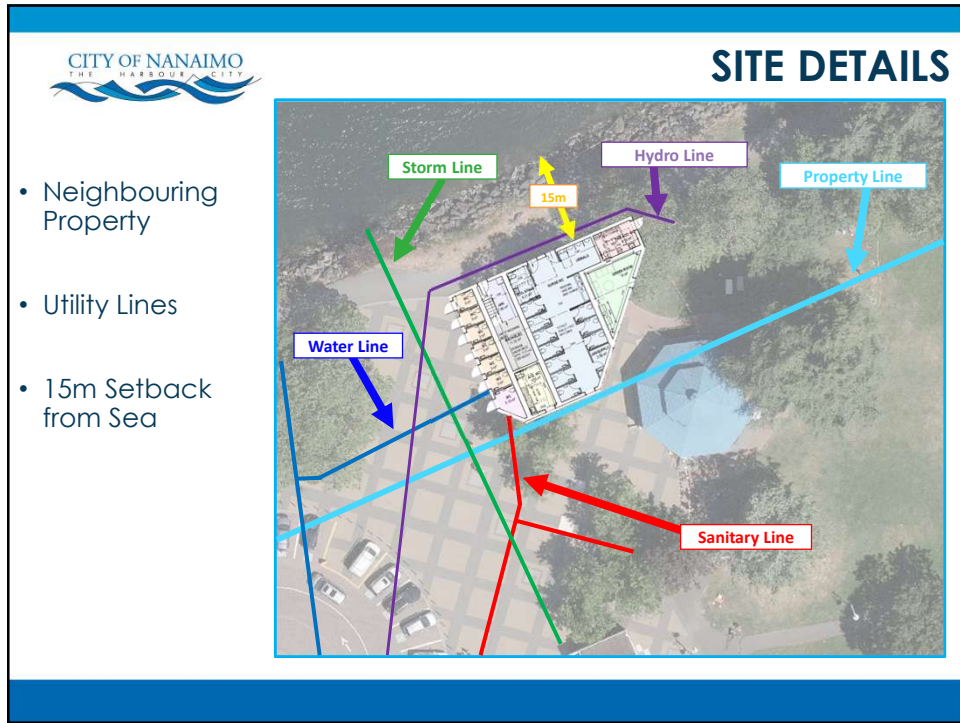
## PROJECT PURPOSE & SCOPE

- The existing washroom facility cannot support the current demand.
- A new amenity building will include **universal, gender-neutral, and accessible** washroom facilities.
- Public amenity that prioritizes accessibility and inclusivity, public safety, and durability.



## PROPOSED SITE

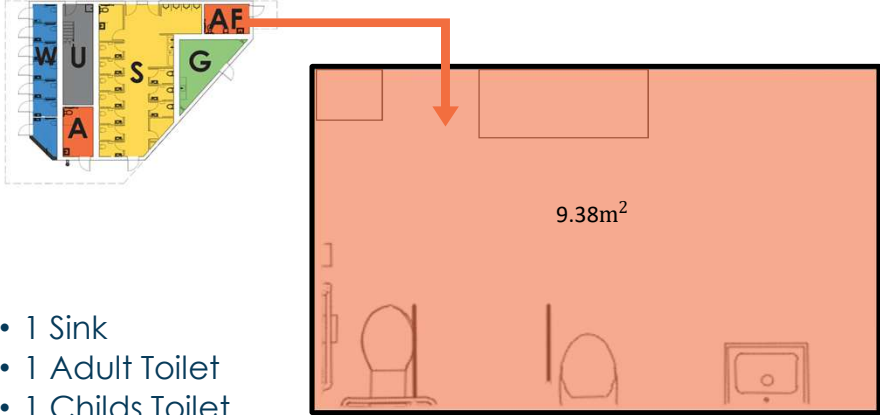




**CITY OF NANAIMO**  
THE HARBOUR CITY

## COMMITTEE FEEDBACK

Family Accessible Washroom



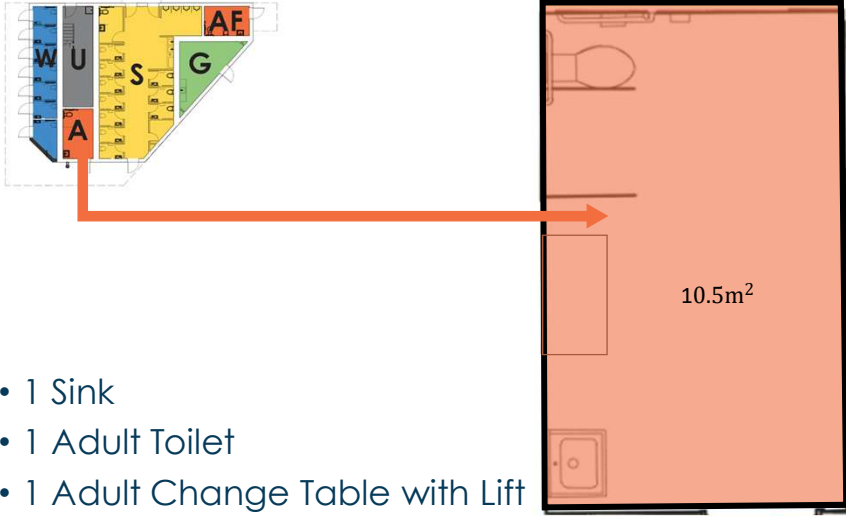
9.38m<sup>2</sup>

- 1 Sink
- 1 Adult Toilet
- 1 Child's Toilet
- 1 Bench
- 1 Adjustable Change Table

**CITY OF NANAIMO**  
THE HARBOUR CITY

## COMMITTEE FEEDBACK

Accessible Washroom



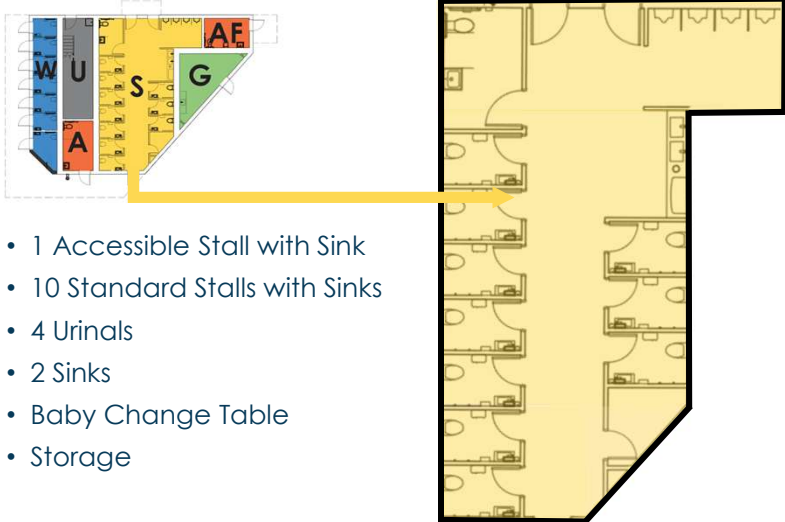
10.5m<sup>2</sup>

- 1 Sink
- 1 Adult Toilet
- 1 Adult Change Table with Lift

**CITY OF NANAIMO**  
THE HARBOUR CITY

## COMMITTEE FEEDBACK

### Surge Washrooms

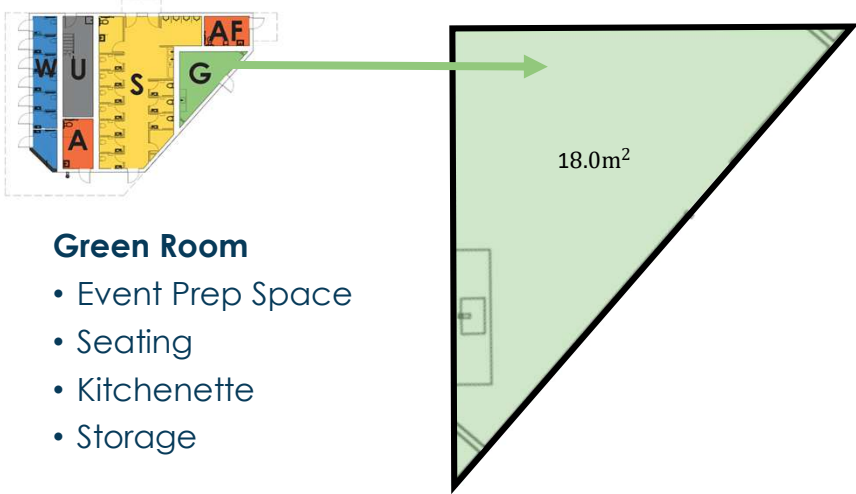


- 1 Accessible Stall with Sink
- 10 Standard Stalls with Sinks
- 4 Urinals
- 2 Sinks
- Baby Change Table
- Storage

**CITY OF NANAIMO**  
THE HARBOUR CITY

## COMMITTEE FEEDBACK

### Green Room



18.0m<sup>2</sup>

### Green Room

- Event Prep Space
- Seating
- Kitchenette
- Storage

**CITY OF NANAIMO**  
THE HARBOUR CITY

## COMMITTEE FEEDBACK

Other

**This space could be:**

- Additional Standard Washroom (W);
- Park Ambassador Space (P);
- Nursing Room (N);
- Other

**CITY OF NANAIMO**  
THE HARBOUR CITY

# THANK YOU!