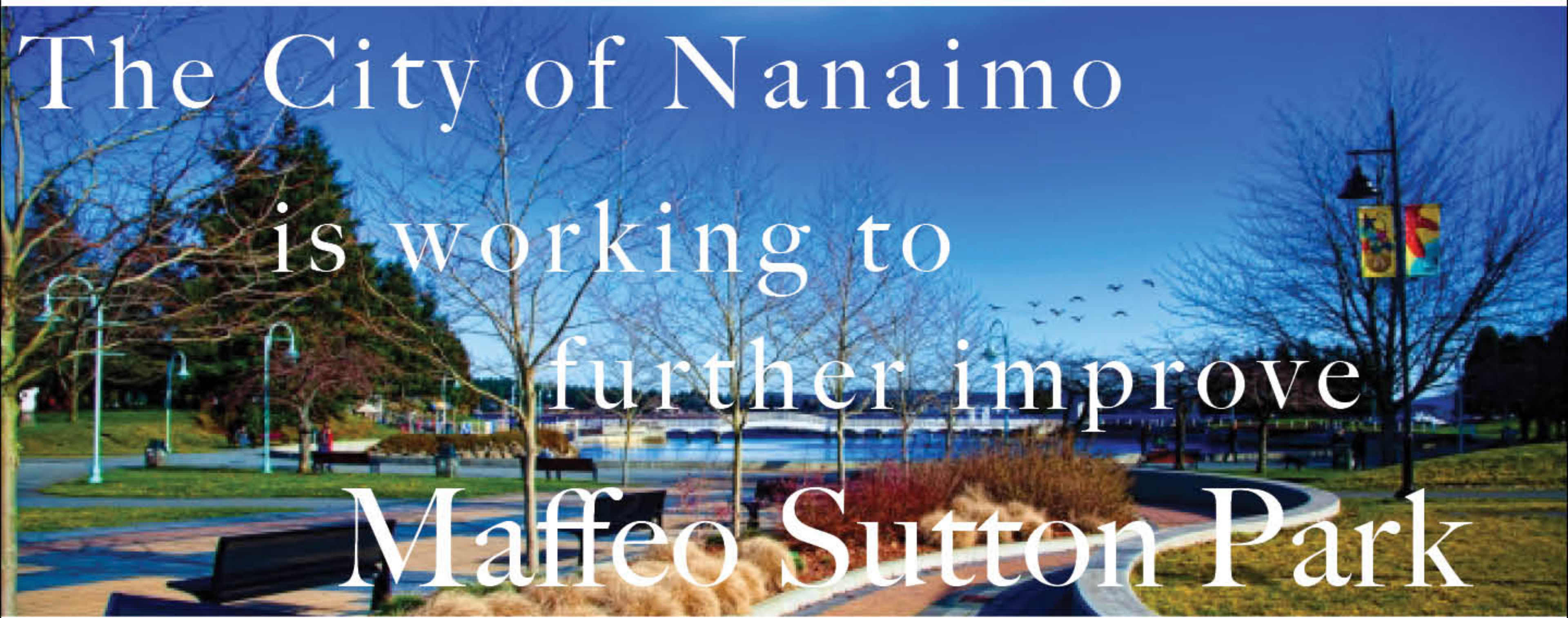


Nanaimo's premier waterfront and special event park.



Maffeo Sutton Park Improvement Update



Now the busiest park in Nanaimo

The City of Nanaimo is working to further improve Maffeo Sutton Park. Now the busiest park in Nanaimo, Maffeo Sutton Park has developed over the last 65 years from an industrial site into Nanaimo's destination waterfront park.

The original Maffeo Sutton Park Improvement Plan was developed in 2008 with significant public input. The Maffeo Sutton Park Spirit Square opened in 2009 and was the first phase of park improvements.

However, since 2008, the park and downtown waterfront has changed. In 2011, the park expanded by 2.3 acres with the addition of 150 Comox Road to the park system. Also, since approval of the 2008 park plan, the City of Nanaimo adopted a Corporate Strategic Plan and began development negotiations on key properties adjacent to the park. Therefore, given these contextual changes, Council endorsed a planning process to update the Maffeo Sutton Park Improvement Plan.

The following park improvement goals were developed during the 2004 referendum and are still guiding park improvement plans today:

- ▶ Enhance key park features such as performance spaces, play spaces and waterfront access.
- ▶ Maintain existing amount of parking stalls and enhance access to the park.
- ▶ Improve pedestrian and multi-use circulation routes.
- ▶ Improve public amenities in the park.
- ▶ Enhance the park for special events and public use.
- ▶ Increase public open space along the waterfront.
- ▶ Add historical and industrial interpretation within the park.
- ▶ Include a phasing plan to maintain access through development.



Geographic area included in current park improvement plan.



Spirit Square:

The Maffeo Sutton Spirit Square officially opened July 2009. Many of the distinctive features of the Spirit Square are unique to Nanaimo and are not found in other urban parks in North America such as the event plaza space, tent tie-downs and potable water at the street trees.

Since opening, the Spirit Square and overall park have been venues for over 100 annual special events (big and small) such as:

- ▶ Marine Festival
- ▶ Dragon Boat
- ▶ Blues Festival
- ▶ Kraft Celebration Tour
- ▶ Silly Boat Regatta
- ▶ Fund Raisers
- ▶ Olympic Torch Relay

Feedback from users has been positive overall and many people have asked what improvements are coming next. This process will help to define that.



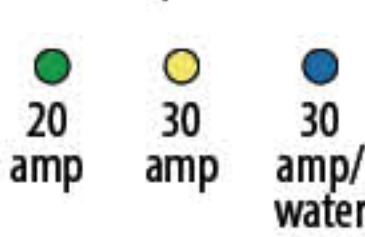
Tent Anchors



Tree Grate Power



Colour Caps



During construction...

Park Improvement Plan Time Line

The following park planning process is being conducted:

Stage 1: Review existing conditions of sites and public feedback on existing plan and improvements (Completed 2012)

- ▶ The Snuneymuxw First Nations (SFN) were kept informed throughout the planning process to ensure that options work with SFN's short and long-term plans for their property.

Stage 2: Assess Priorities for Park Use and Improvements (Completed 2013)

- ▶ Staff met with several park stakeholders to assess successes of the improvements to date and future needs and vision for the park.
- ▶ Conducted a public survey in the park during summer events, on busy weekends, and online which was completed by over 1000 people. The survey inquired about park strengths, weaknesses, and future directions.
- ▶ The City website has been updated with information about the process as a communication tool to distribute planning documents and surveys. In addition, radio, face book, twitter, TV, newspapers, and site signs have been used for communication about the process.
- ▶ Open houses were held in summer 2012 in Maffeo Sutton Park. Open houses were attended by a few hundred people and were well advertised with park signage, face book, twitter, newspaper and radio. Comments provided further input for vision and options for the park.

Stage 3: Plan Preparation (Ongoing) WE ARE HERE...

- ▶ Compiled survey results, stakeholder input, and site characteristics.
- ▶ Drafted park vision and improvement plan options based on input, site opportunities and constraints.
- ▶ Presented to Parks and Recreation Commission for review and approval to have the draft improvement options reviewed by the public summer 2015.

Stage 4: Draft Plan Review and Adoption (Anticipated 2015)

- ▶ Draft park vision and improvement plan for presentation to public and stakeholders for review and input.
- ▶ From public review, modify draft plan refine park visioning concept and summarize public input obtained.
- ▶ Present final plan and summary of input to Parks and Recreation Commission, followed by City Council, for review and adoption.

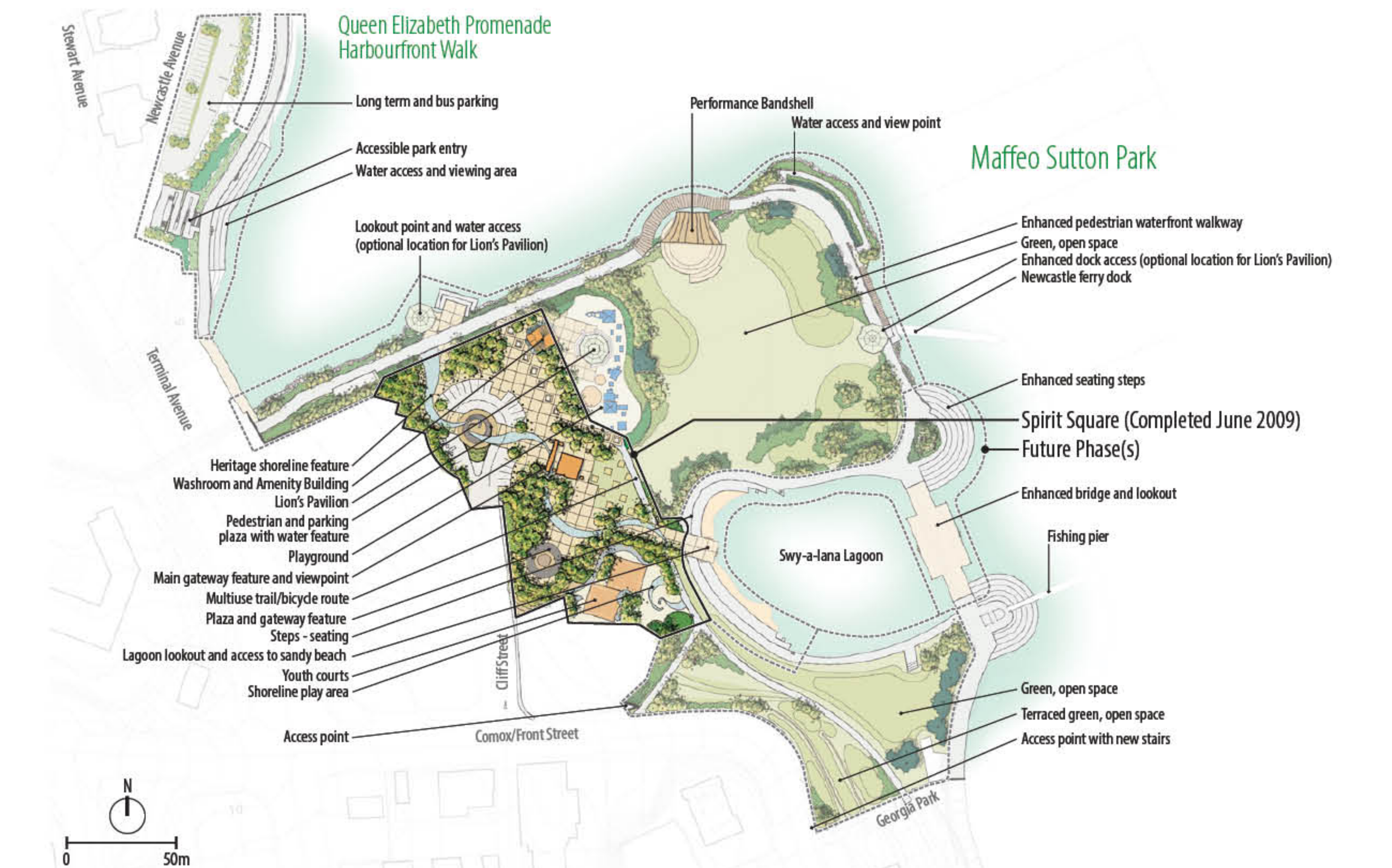


The following groups are being included throughout the, Maffeo Sutton Park Plan Update:

- ▶ General public & neighbours
- ▶ Park users
- ▶ Snuneymuxw First Nations
- ▶ Nanaimo Port Authority
- ▶ Special Event groups
- ▶ Nanaimo Lions Club
- ▶ Howard Johnson Hotel
- ▶ Adjacent downtown developers
- ▶ NEDC - Nanaimo Economic Development Corporation
- ▶ Downtown Nanaimo Business Improvement Association
- ▶ City Staff (Community Safety & Development, Parks Recreation & Environment, Bylaws, RCMP)
- ▶ BC Parks and Pickle Boat Operators
- ▶ Department of Fisheries and Oceans, Biologists & Engineers

What... Should be changed? or updated?

2008 Vision... currently under review & being updated



2008 Park Improvement Concept, currently under review.

In 2008, the City of Nanaimo completed a park improvement plan concept with considerable public input. Phase 1, the Spirit Square, was completed in 2009. With the addition of the 2.3 acres of property at 150 Comox Road to Maffeo Sutton Park, a changing downtown context plus a desire from City Council to review the future phases of the plan, it is an opportune time to step back and update the overall park plan.



Park Existing Conditions Map

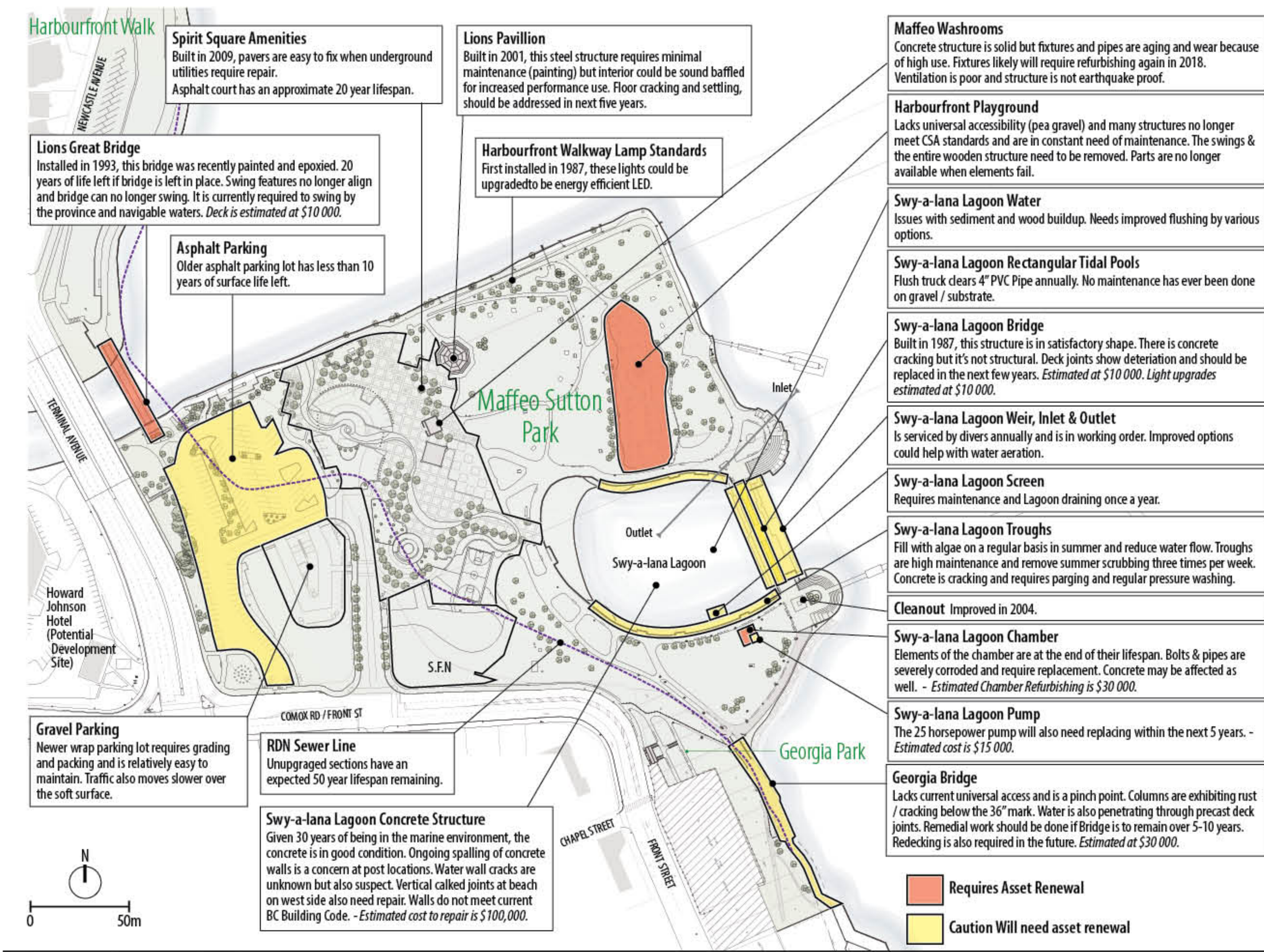




Identifies park constraints, amenities, and features. As well as how it's currently functioning.



Park Lifespan



Identifies park conditions.



Which park area or amenity do you think is a priority?

Imagine you are in charge of deciding how to allocate funding for further development of Maffeo Sutton Park.

How would you spend your funds?

- ▶ Take 3 dots and place them on the map below in the locations that you would most like to improve/modify.
- ▶ You can place any or all of your 3 dots on the one location or a few - it's up to you!





Park Strengths

- ▶ *Spectacular location and panoramic views*
- ▶ *Busiest & most popular park in Nanaimo*
- ▶ *Both natural and man-made features are inherent on site*
- ▶ *Diverse recreational opportunities for all ages and abilities at all times of day and in all seasons*
- ▶ *Harbourfront walkway is already a very active edge*
- ▶ *Landmark park elements (public art feature, iconic bridge etc)*
- ▶ *Significant cultural and heritage site (First Nations and industrial heritage)*
- ▶ *Existing programming and events are very popular*
- ▶ *Destination park and event space with many options of things to do*
- ▶ *Portal to the downtown for pedestrians*
- ▶ *Provides a unique sense of place for Nanaimo*
- ▶ *Major infrastructure is already in the park as Phase 1 - Spirit Square construction*
- ▶ *Popular destination for tourists and locals*

Park Weaknesses

- ▶ *Harbourfront Walkway width is narrow in places This can limit future pedestrian use and cyclist use*
- ▶ *Constraints of a man-made fill site*
- ▶ *Limited by the RDN sewer pipeline location and some archaeologically significant features*
- ▶ *Limited access to touch the water and “get your feet wet”*
- ▶ *Not well connected to downtown for pedestrians, cyclists or cars*
- ▶ *Park entrances lack gateway features/entrances*
- ▶ *Shoreline and park plantings provide limited habitat value*
- ▶ *Some park infrastructure is reaching the end of its lifespan (playground features, washroom fixtures, lagoon mechanics)*
- ▶ *Lions Pavilion shell could be improved for some performances*
- ▶ *Service, event and ferry vehicles conflict with park use*
- ▶ *Open spaces phases built at different times and now lack of continuity, materials and signage along the park/trail system*
- ▶ *Shallow soil depths in some locations (i.e. Georgia Park)*
- ▶ *Waterfront site can be exposed to salt and winds*
- ▶ *Steep grade in some locations (i.e. Georgia Park and Queen Elizabeth Promenade)*
- ▶ *Invasive species are starting to take over some park locations (i.e. Queen Elizabeth Promenade)*



Opportunities

- ▶ *Connecting to expanding park and trail systems (Harbourfront Walkway S and N, Millstone River Greenway, Stewart Ave developments)*
- ▶ *Continue to develop connections to Newcastle Island and the Nanaimo harbour (physically and view corridors)*
- ▶ *Continue to work with SFN on development of site, partnerships & connections to Newcastle Island*
- ▶ *Connect better to downtown to and from the park for additional parking, alternative transportation, amenities, and cycle routes*
- ▶ *Integrate the park system with contextual development (Front Street, Stewart Ave, Mill St etc.)*
- ▶ *Create gateway features for the park and the downtown*
- ▶ *Utilise the slope of Georgia Park and the Queen Elizabeth promenade as assets for harbour viewing and place making*
- ▶ *Provide a variety of opportunities to enhance and access the water's edge (physically and visually)*
- ▶ *Enrich performance spaces and provide facilities for events*
- ▶ *Program with more events in all seasons and continue to utilise the spirit square for community events*
- ▶ *Continue to provide places to sit, people watch etc and enjoy the park on an everyday basis*
- ▶ *Highlight, celebrate and integrate unique site features (original shoreline, rock outcropping etc.)*
- ▶ *Honour the historical and cultural significance of the site*
- ▶ *Increase habitat values and work towards ecological enhancement*
- ▶ *Develop a signage and material palette for downtown park-trail system*
- ▶ *Create features/character in the park that showcase Nanaimo*
- ▶ *Consider revenue opportunities locations (vendors, kayak rentals etc.)*
- ▶ *Ensure plan material selection is suitable for the conditions and is easy to maintain*

Challenges

- ▶ *Not enough parking for the site during events*
- ▶ *Integrating construction phasing into park improvement plan*
- ▶ *Integrating park and public use into changing downtown context (shading, circulation patterns, construction timing, view corridors etc.)*
- ▶ *Keeping a sense of continuity along the trail/park/open space system despite the varying ownership and developers involved*
- ▶ *Balancing park event use with casual park use and the residential and downtown context (traffic, noise etc.)*
- ▶ *During events, keeping the park circulation routes open for casual park use and emergency vehicles*
- ▶ *Maintaining and constructing infrastructure (as well as plantings) despite the salt water context*
- ▶ *Continue to balance sitelines, plantings, views, and crime prevention through environmental design*
- ▶ *Limited parking & gear drop off / access available to Newcastle Island*

Key Themes from 2012 public input (over 1000 survey respondents)

Park entrance

- ▶ *Make the park visible and inviting from the highway and Comox Road*
- ▶ *Make connections and circulation clear with way finding signage at parking lot*

Swy-a-lana Lagoon

- ▶ *Concerns about the aesthetics and cleanliness of the water walls and Lagoon beach. Opportunities to open up the beach and connect it better to the park than the existing access point and retaining wall*
- ▶ *Opportunities to utilise the lagoon and beach more for recreation (swimming, sitting, sunning, events)*
- ▶ *Opportunities to soften the lagoon edge*

Parking

- ▶ *Improve way finding to alternate offsite parking including downtown parkades*
- ▶ *Work with transit to maintain and increase park connections*
- ▶ *Suggestions to modify accessible parking and bottle dots*

Trail connections and expansion

- ▶ *Strong desire to have trail connections established up Millstone River to Bowen Park and overflow parking options. This came up as the highest priority action in the survey*
- ▶ *Opportunity to better connect to Harbourfront Walkway from Maffeo Sutton Park in front of Georgia Park*

Park green space and beautification

- ▶ *Appreciation of grass and soft, attractive plantings in the downtown as density increases*
- ▶ *Some areas of grass require drainage improvements*

Washrooms and Amenity building

- ▶ *Interest to have a tourism presence in the park*
- ▶ *Concern that the current washrooms don't fit with park layout (feel in the way since they were to be removed)*
- ▶ *Interest to increase facilities and modernise with family-style facilities*

Bicycles

- ▶ *Conflicts identified between mobility challenged people and cyclists*
- ▶ *Desire to make downtown cycle routes more clear through signage, education and enforcement*
- ▶ *Desire to encourage cycling to Maffeo Sutton Park in a safe manner*

Docks and access to water

- ▶ *Desire to add options for people to touch the water*
- ▶ *Crab dock is a very popular feature and could be improved*
- ▶ *Desire to add kayak dock and options for fishing*

Programming

- ▶ *Desire for more buskers and higher quality, artisans etc. throughout Maffeo Sutton Park and along the Harbourfront Walkway*
- ▶ *Desire for additional programming during all seasons---including summer and winter months*

Bulletin Board and Event Board

- ▶ *Desire to have information sharing and event listings for the park right in the thick of the action*

Key Themes from 2012 public input

continued...

Playground

- ▶ *Desire to maintain a destination playground for families in the park with a nautical play focus*
- ▶ *Strong desire for upgrades to the surfacing and equipment*
- ▶ *Desire for some spray elements to be incorporated*

Youth

- ▶ *Appreciation of the basketball court and desire to have other options for youth activities*

Dogs

- ▶ *Mixed sentiment about dogs. Some desire additional dog fountains and dog stations with others requesting no dogs allowed along the walkway system.*
- ▶ *Concerns about dog waste smells and lack of picking up in summer months*

Performance and event spaces

- ▶ *Concerns that the bandstand is unused most of the time and does not suit the needs of performers with poor sound quality*
- ▶ *Desire for conch-like performance space (permanent or temporary) for main stage events*

Water fountains and outside shower

- ▶ *Desire to increase the number of water fountains available along the walkway. They should have nozzles to facilitate the refilling of reusable water bottles*
- ▶ *Desire for outdoor shower in Maffeo Sutton Park*

Vendors

- ▶ *Mixed input about vendors. Everyone wants opportunities to purchase food in the park, but while some want many small vendors, others want a nice restaurant and patio seating. Concern expressed about the current state and current eatery options*

Public art

- ▶ *Desire to continue and expand public art displays in Maffeo Sutton Park and along the Walkway*

Newcastle

- ▶ *Desire to better connect physically, visually, and experientially to Newcastle*
- ▶ *Desire to better signage for ferry terminal and options for pickup*

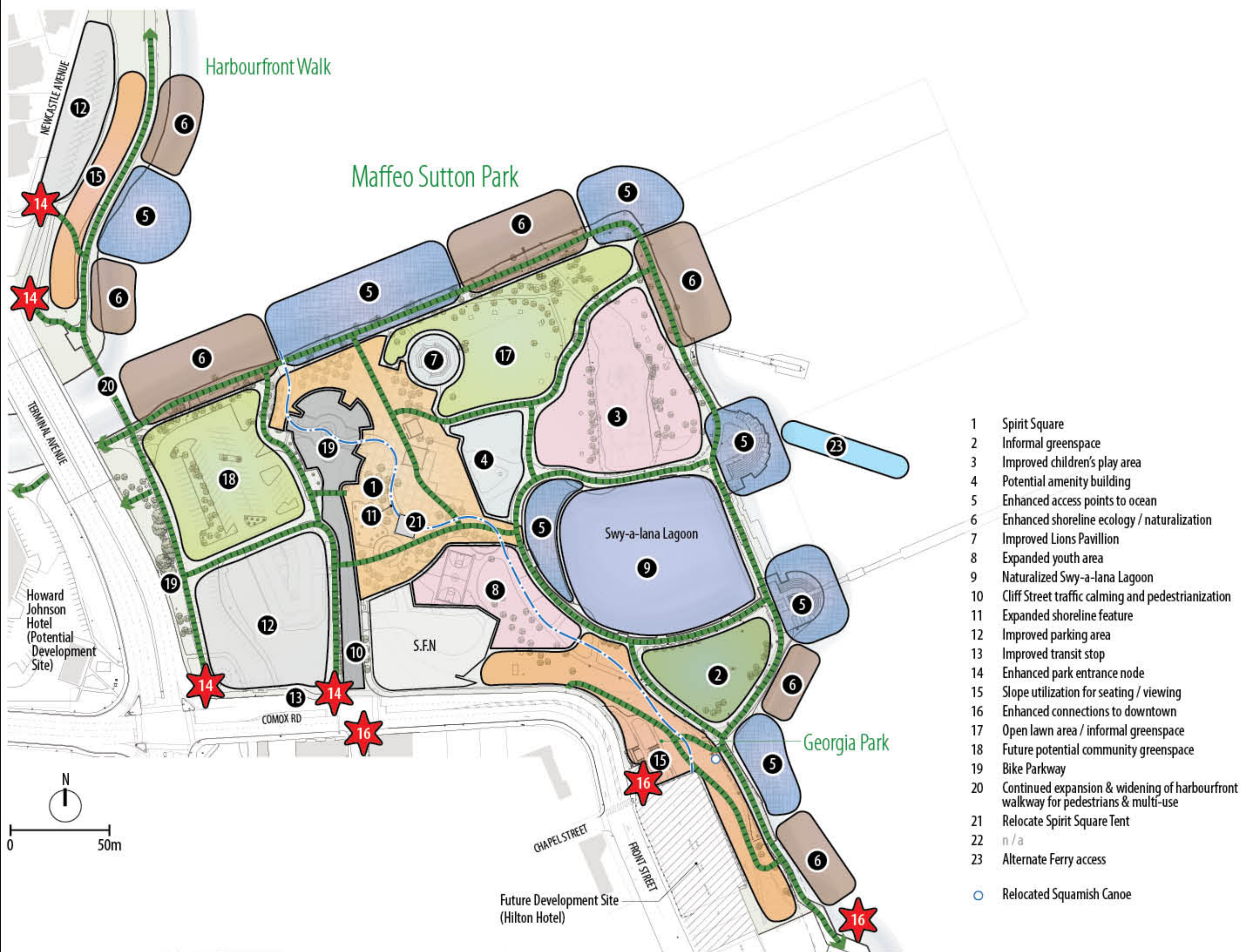
Signage and regulations

- ▶ *Concerns that park directional and regulation signs are unclear*
- ▶ *Desire to have more interpretive signage for tourists and heritage interpretation*

Option I

Schematic Park Improvements

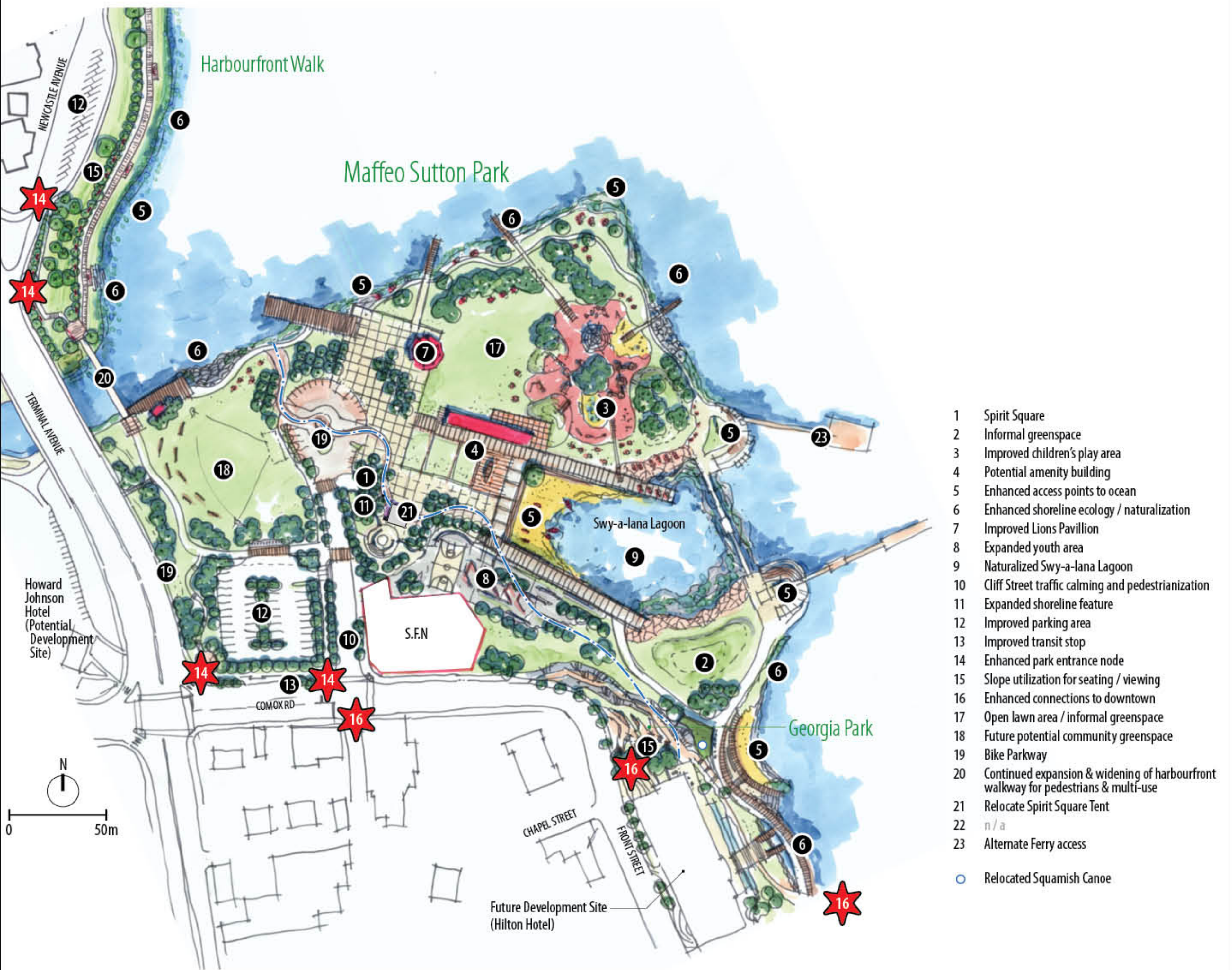
► This schematic bubble diagram provides a framework for park development over the next 15 years.



Option I

Detailed Park Improvements

► Potential buildout of how the park might develop.





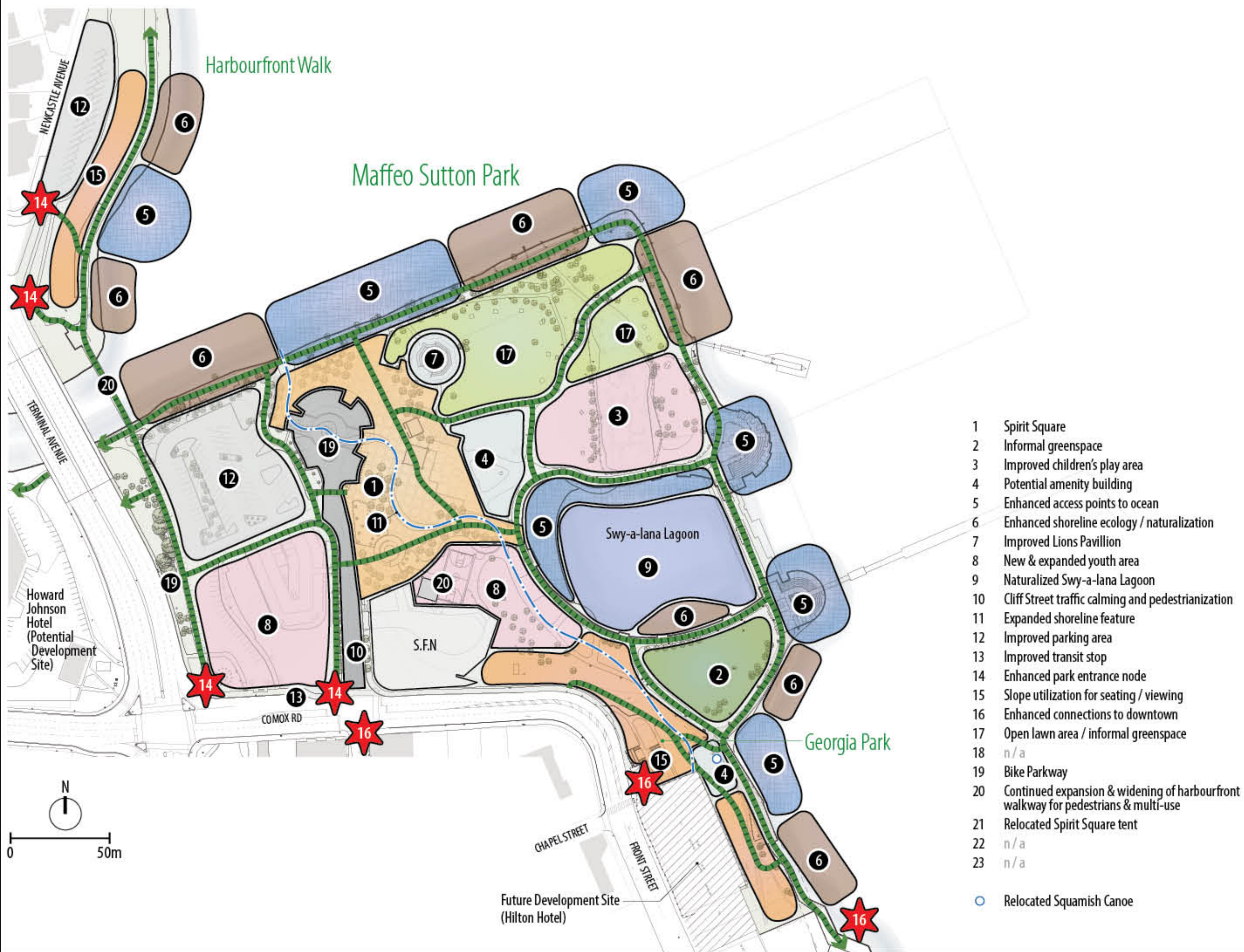
Option I Consider all three options

- ▶ What elements of this option do you like?
- ▶ Please take stickies and write down what you think or like or dislike about Option I.
- ▶ The final park improvement plan will reflect the best elements of all three options.

Option 2

Schematic Park Improvements

► This schematic bubble diagram provides a framework for park development over the next 15 years.



Option 2

Detailed Park Improvements

► Potential buildout of how the park might develop.



Option 2

Consider
all three options

- ▶ What elements of this option do you like?
- ▶ Please take stickies and write down what you think or like or dislike about Option 2.
- ▶ The final park improvement plan will reflect the best elements of all three options.

Option 3

Schematic Park Improvements

► This schematic bubble diagram provides a framework for park development over the next 15 years.

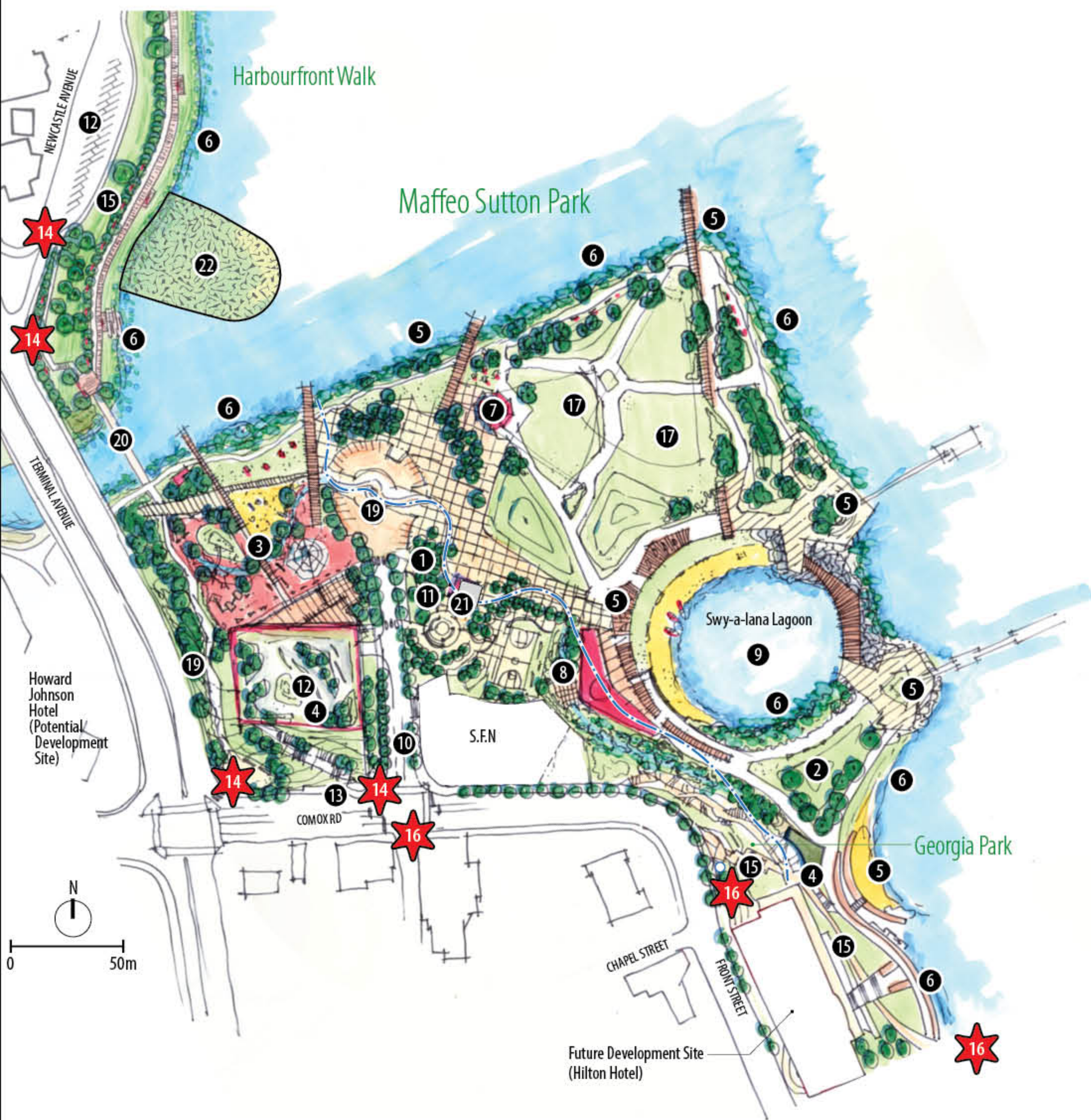




Option 3

Detailed Park Improvements

► Potential buildout of how the park might develop.



- 1 Spirit Square
 - 2 Informal greenspace
 - 3 Improved children's play area
 - 4 Potential amenity building
 - 5 Enhanced access points to ocean
 - 6 Enhanced shoreline ecology / naturalization
 - 7 Improved Lions Pavilion
 - 8 New & expanded youth area
 - 9 Naturalized Swy-a-lana Lagoon
 - 10 Cliff Street traffic calming and pedestrianization
 - 11 Expanded shoreline feature
 - 12 New parking structure / amenity building
 - 13 Improved transit stop
 - 14 Enhanced park entrance node
 - 15 Slope utilization for seating / viewing
 - 16 Enhanced connections to downtown
 - 17 Open lawn area / informal greenspace
 - 18 n / a
 - 19 Bike Parkway
 - 20 Continued expansion & widening of harbourfront walkway for pedestrians & multi-use
 - 21 Relocated Spirit Square tent
 - 22 Habitat Island
- Squamish Canoe

Option 3

Consider
all three options

- ▶ What elements of this option do you like?
- ▶ Please take stickies and write down what you think or like or dislike about Option 3.
- ▶ The final park improvement plan will reflect the best elements of all three options.

Inspirational Ideas for Concepts

Access to the water



► Vancouver

Industrial & Heritage



Playspaces



► Hinge Park



Habitat Island

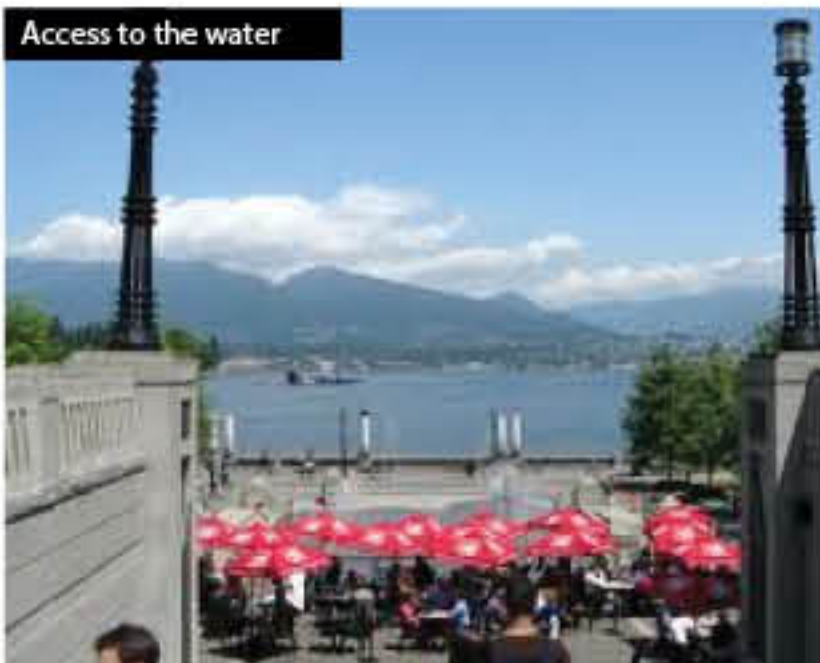


► Vancouver - Habitat Island

Vendors & Activities



Access to the water



Vendors & Activities



► Vancouver

Harbour programming

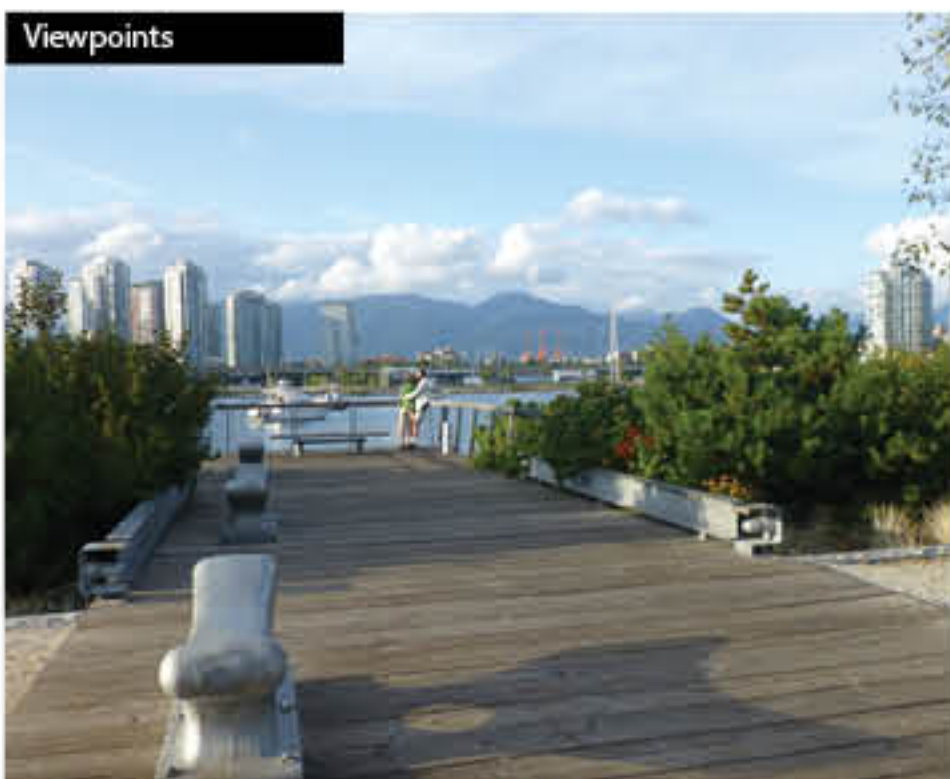


Youth spaces



► Denmark

Viewpoints



Heritage & Interpretive



Access to the water



► Vancouver

Access to the water



Access to the water



► Kelowna

Maffeo Sutton Park Improvement Update...

Nanaimo's premier waterfront and special event park.



How can I get involved?

How can I get involved & express ideas?

Nanaimo City Council and Parks Recreation and Environment staff are keen to hear your input as we move forward in planning for Maffeo Sutton Park & review potential park improvements.

There are many ways you can communicate your ideas and opinions for the park:

- ▶ Go online and fill out a survey - www.cnan.ca/maffeosutton
- ▶ Attend an open house at the park and fill out a park survey. Dates will be posted in the park, local newspapers, online and through social media.
- ▶ E-mail your opinions and input to parks@nanaimo.ca or call 250-756-5200.
- ▶ Participate in park flag displays.

Thanks for taking the time to share your input.

Survey Station

- ▶ Thank you for taking the time to attend and participate in planning for Maffeo Sutton Park.
- ▶ Your input will contribute to further improvement at the park.
- ▶ Please take a moment to complete a survey.
- ▶ Surveys will also be available online at www.cnan.ca/maffeosutton

Maffeo Sutton Park - The last 150 years...

Maffeo Sutton Park Chronology	Timeline	Parks, Recreation & Environment Chronology
1854 HBC operates a sawmill on Millstone River 1888 Nanaimo Foundry opens 1937 Squamish Canoe donated to Georgia Park 1938 Plebicite about public spending to construct Civic Arena	1850 - 1900	
1940 Grand opening of Civic Arena 1944 + 1948 City acquires Georgia Park as 1st waterfront park	1930 - 1960	1931 City acquires Bowen Park 1953 City acquires Beban Estate 1958 Centennial Building opens
Plans to develop park and marina uses along the Nanaimo Harbour are considered by City Officials	1960's	1964 Kinsmen Pool opens 1967 Bowen Complex opens
1974 City plans to develop Millstone River area into a public park. Development of Maffeo Sutton Park begins	1970's	1975 City of Nanaimo amalgamates local improvement areas 1976 Frank Crane Arena, Beban Pool and Beban Social Centre open 1977 Bowen Complex addition
1984 Swy-A-Lana Lagoon opens	1980's	
1900's Harbourfront Walkway expansion 1990's Special events begin to be held in Maffeo Sutton Park	1990's	1991 City assumes ownership of Beban Park 1994 Cliff McNabb Arena opens 1996 Parkway Trail opens 1998 Port Theatre opens
2000 Lions Pavillion opens 2004 Referendum held over building the Nanaimo Conference Centre, Ice Centre and removal of Civic Arena 2006 Demolition of Civic Arena 2006 Generations sculpture donated to Maffeo Sutton Park 2007 Foundry site demolished 2008 Development of the Maffeo Sutton Park Spirit Square and initial improvement plan begins 2009 Spirit Square opens	2000's	2001 Nanaimo Aquatic Centre opens 2006 Nanaimo Ice Centre opens 2008 Oliver Woods Community Centre opens 2008 Nanaimo Conference Centre opens 2008 Nanaimo District Museum opens in new location
2014 Hilton Hotel / Insight Development apply for rezoning 2015 Maffeo Sutton Park improvement planning continues 2015 Howard Johnson Hotel discusses potential development 2015 SFN begin business planning for Newcastle Island Provincial Park & Comox Propoerties	2010's	

Maffeo Sutton Park Improvement Update...

Nanaimo's premier waterfront and special event park.



1960's

Maffeo Sutton Park Improvement Update...

Nanaimo's premier waterfront and special event park.



1979

Maffeo Sutton Park Improvement Update...

Nanaimo's premier waterfront and special event park.



1984

Maffeo Sutton Park Improvement Update...

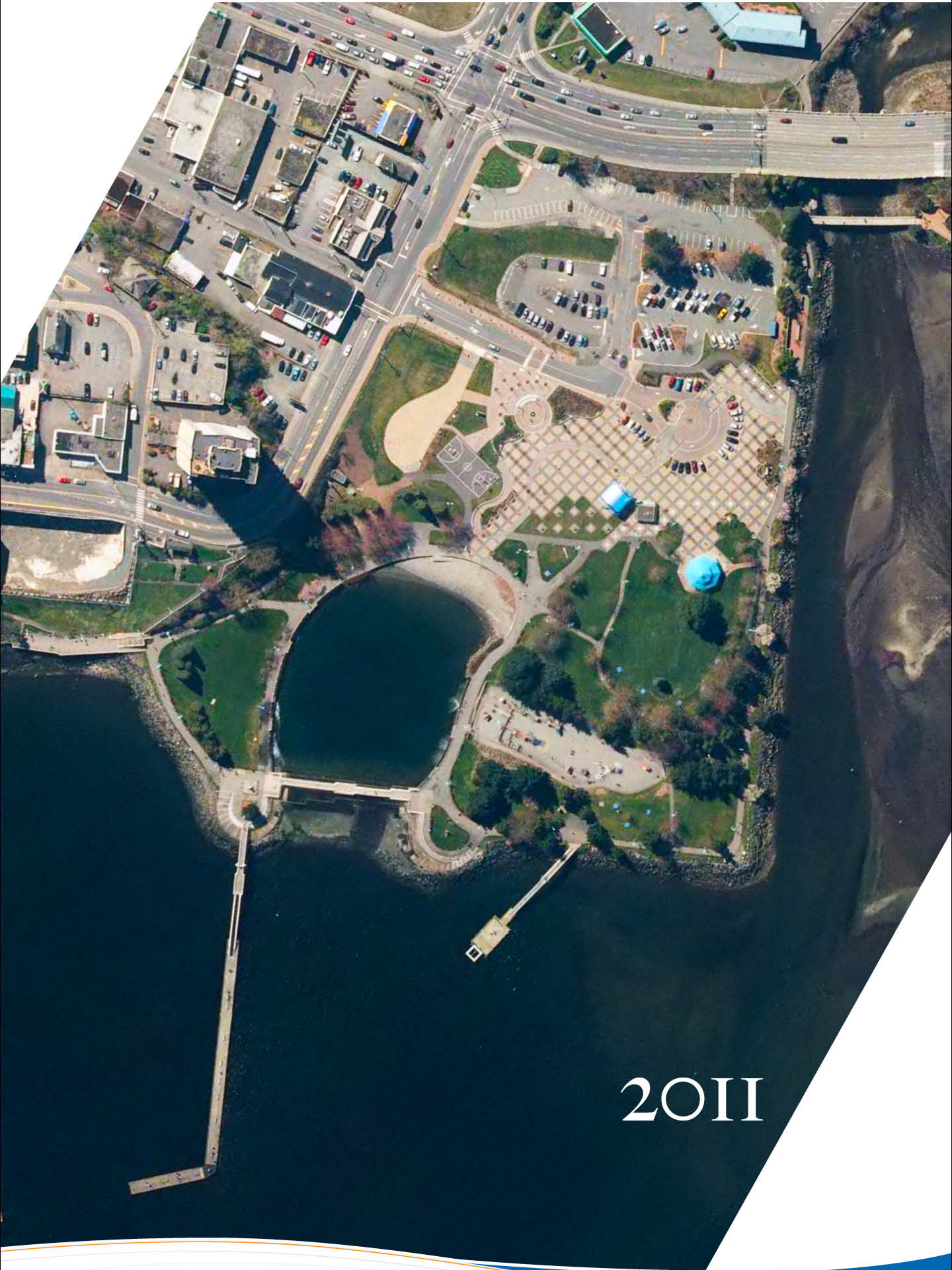
Nanaimo's premier waterfront and special event park.



2006

Maffeo Sutton Park Improvement Update...

Nanaimo's premier waterfront and special event park.



2011

Maffeo Sutton Park Improvement Update...

Nanaimo's premier waterfront and special event park.

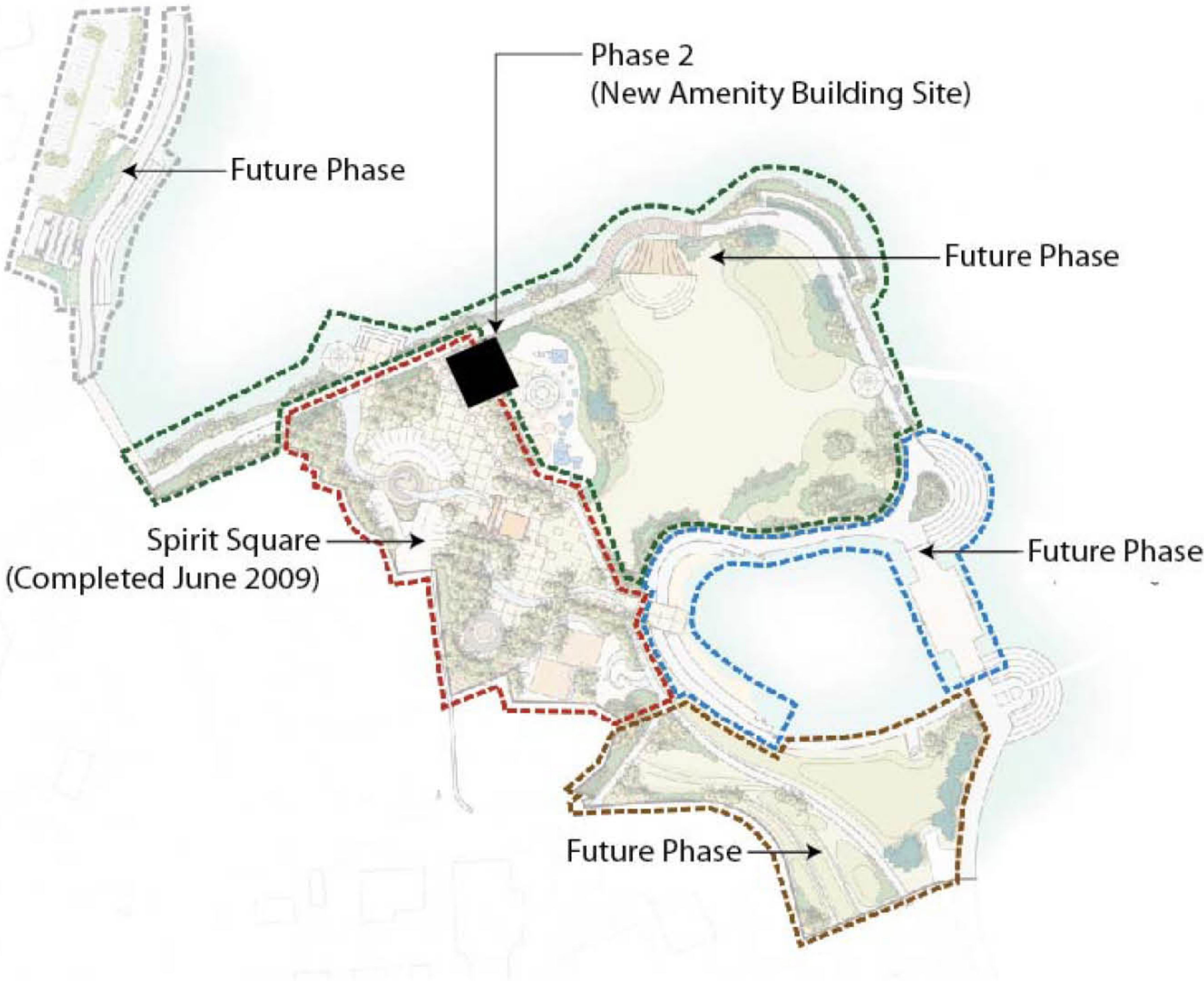


2008 Park Improvement Concept

currently under review.

Maffeo Sutton Park Improvement Update...

Nanaimo's premier waterfront and special event park.



2008 Phasing Plan,
currently under review.

Maffeo Sutton Park Improvement Update...

Nanaimo's premier waterfront and special event park.



Geographic area included
in park improvement plan.