



**2022-FEB-14**

**reimagine**  
**NANAIMO**

Loving  
our City

1

**Today's  
Agenda  
Feb 14**

## TOPICS

- |   |                       |
|---|-----------------------|
| 1 | Reconciliation        |
| 2 | Recreation & Wellness |
| 3 | Phase 3 & Timelines   |





## TOPICS

- |   |                       |
|---|-----------------------|
| 1 | Reconciliation        |
| 2 | Recreation & Wellness |
| 3 | Phase 3 & Timelines   |

## Truth and Reconciliation



Means different things to different people...

“You know, reconciliation at its centre is really about, for me, fundamentally two things.

**It is about respect and  
it is about love.”**

Natan Obed, President, Inuit Tapiriit Kanatami

What does it mean for us as a City and our areas of influence.....  
as reflected in our City Plan?



# Truth and Reconciliation



## PREVIOUS APPROACH AND BACKGROUND:

- 2008 OCP no references to Reconciliation but references relations with Snuneymuxw
- Land acknowledgements in some newer City documents – e.g. Health & Housing Action Plan
- 2019 Council support of TRC #57 - City of Nanaimo Staff learning about local, provincial, and national histories of Indigenous Peoples



## CITY PLAN REVIEW PROCESS :

Ongoing conversations with First Nations Governments continue during Phase 3 and beyond....

5

# Truth and Reconciliation



## PROPOSED APPROACH:

Acknowledge that the City of Nanaimo Boundary within the Traditional Territory of the Snuneymuxw First Nation with many significant ancestral village sites located in areas such as Departure Bay and Downtown. This includes recognition of their Treaty of 1854.

Also acknowledge that to the North of the City, Snaw-Naw-As (Nanoose First Nation) has shared Traditional Territory interests.

The City will continue conversations with both First Nation Governments to clarify and confirm language in the draft City Plan.



6



# Truth and Reconciliation

## CITY PLAN DRAFT DIRECTION



- **Territorial Acknowledgement** at start
- **Separate Section in Goal 4 Empowered**
- **Policies integrated throughout draft plan** under other Goals 1, 2, 3, 5

7

# Truth and Reconciliation

## CITY PLAN DRAFT DIRECTION



### Introductory language

We are committed to the hard work of advancing Truth and Reconciliation through government-to-government relations and protocols.

This includes working together in a good way with First Nations leadership....





# Truth and Reconciliation

## CITY PLAN DRAFT DIRECTION



### GOAL 4: EMPOWERED

#### Desired Outcomes

**The City of Nanaimo acknowledges** ongoing planning and land development occurs on the Traditional Territories of First Nations ....

**Respectful relations between City of Nanaimo and First Nations Government -** focus on relationship-building...



# Truth and Reconciliation

## CITY PLAN DRAFT DIRECTION



### GOAL 4: EMPOWERED

#### Desired Outcomes (continued)

- **A fully inclusive community** supports well-being of community with diverse cultural backgrounds especially Indigenous.
- **Recognition of the Truth and Reconciliation Commission's 94 Calls to Action** ongoing action in all areas where the City has impact or influence.
- **Improved community cohesion and Indigenous belonging** through education and awareness of the culture and strengths of Canada's Indigenous peoples with focus on First Nations whose Territories the City's Boundary is on.



# Truth and Reconciliation

## CITY PLAN DRAFT DIRECTION



### Government-to-Government Relations

#### Reinforces existing approaches that prioritize G2G

- Engage G2G as per existing Protocol with Snuneymuxw and future updates/Protocol Agreements
- Territorial Acknowledgements at start of meetings
- Collaboration on projects of mutual interest
- Approval by First Nations on City public art, culture, or heritage projects with Indigenous content on their Traditional Territories.



11

# Truth and Reconciliation

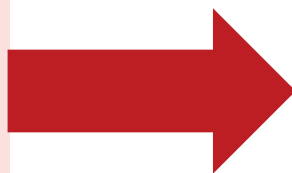
## CITY PLAN DRAFT DIRECTION



### Urban Indigenous Community

Canadian Constitution recognizes three distinct groups of Indigenous peoples: First Nations, Métis, and Inuit.

In Nanaimo there are many Indigenous peoples who “live off-reserve” or “away” from their home communities.



### Equity and Inclusivity Approach

Woven throughout the plan, and in a specific section, is an equity and inclusivity approach intended to address the unique needs of community members of needs of equity groups. This includes Indigenous people (both on and off reserve), women, racialized communities, people experiencing homelessness, LGBTQ2+ communities, and people with disabilities.

12



# Truth and Reconciliation

## CITY PLAN DRAFT POLICY SUPPORTING URBAN INDIGENOUS



### Equity and Inclusivity

Encourage diversity awareness to actively build a culture of compassion and inclusion for people of all cultures, orientations, ages, and abilities.

Incorporate an equity lens into land-use planning decisions and resource allocation across Nanaimo.

Create a welcoming, inclusive atmosphere in City-owned facilities where all people feel safe, comfortable, and represented.

Support and welcome newcomers and encourage their awareness, understanding, and respect for the First Nations Governments and their mustimuxw (peoples) as well as and other Indigenous peoples.

Encourage programs that create employment opportunities and link diverse and under-represented groups to those opportunities.

13

# Truth and Reconciliation

## CITY PLAN DRAFT POLICY SUPPORTING URBAN INDIGENOUS



### Truth and Reconciliation

Work with First Nations to **support and encourage partnerships and initiatives that improve the health and wellbeing of all Indigenous community members** including those represented by the Métis Nation, Inuit, and other Off-Reserve Indigenous Peoples.



14



# Truth and Reconciliation

## CITY PLAN DRAFT DIRECTION



### Awareness, Education, and Equity

- For City Staff and Community
- Work with First Nations Governments to find ways to honour children lost and those impacted by the residential school system



15

# Truth and Reconciliation



### DRAFT ACTIONS: EXAMPLES

- Traditional place names into signage and public spaces
- Collaborating on special events such as National Day for Truth and Reconciliation & National Indigenous people's Day
- Training opportunities for Staff



16



# Truth and Reconciliation



## DRAFT ACTIONS: EXAMPLES

- Assess options for further collaboration on economic development and business development initiatives between the Petroglyph Development Group, the City, and Economic Development group, particularly around tourism and forestry.
- Support Snuneymuxw First Nation in exploring potential Indigenous Cultural & Healing Centre to support on- and off-reserve Indigenous people in Nanaimo in collaboration with Indigenous organizations.
- Continue discussions with Snuneymuxw about collaborative use, maintenance, and transfer of the 100 Comox Road property adjacent to Maffeo Sutton Park.



# Truth and Reconciliation



## Culture Section

### Desired Outcomes

- The culture of First Nations Governments are celebrated and honoured to strengthen recognition and understanding of their Traditional Territories and presence.
- Work with First Nations Governments, the School District, and other community-based organizations to support and promote opportunities for the participation of children, youth, and other under-served groups in cultural activities that promote individual resilience and wellbeing.





# Truth and Reconciliation



## Archaeological and Heritage

### Desired Outcomes

- First Nations cultural heritage, recognized and protected in keeping with their protocols...
- Work with First Nations to ensure that existing and new interpretive signs and other heritage information reflect their stories...
- Work with First Nations to identify and understand sites of special cultural and traditional significance.



19

# Truth and Reconciliation



## Community Events...and Gatherings

Continue to work with First Nations to support the development of venues and co-hosting of sporting and cultural events

(including specific Indigenous events such as Tribal Journeys, North American Indigenous Games, National Day for Truth and Reconciliation, and National Indigenous Peoples Day).





# Truth and Reconciliation



## Parkland and Park Amenity Management

### Desired Outcomes

- Effective co-management of parks of significance to First Nations
- Partner with First Nations and others to co-manage parks identified as mutual priorities.

21

# Truth and Reconciliation



## CITY PLAN : GOAL 5 PROSPEROUS

Place Making and Investment Attraction/Tourism/Business Development

### Desired Outcomes

Collaborations with First Nations Governments on place making initiatives that acknowledge and celebrate their Traditional Territories and cultural values.

### DRAFT POLICIES

- Partner with First Nations on projects that support place making and investment, including Indigenous tourism businesses, cultural and sporting events, public space design features, signage, art, and other ideas.
- Promote the development of Indigenous-led tourism opportunities and experiences through partnerships with First Nations, and others.
- Work with the First Nations to identify areas of joint action and economic development initiatives....

22



# Truth and Reconciliation



## CITY PLAN : GOAL 2 Healthy

Recreation and Wellness/ Emergency Management/ Food Security

### DRAFT POLICIES

- Continue to work with First Nations Governments on access to recreation, sport and wellness facilities, and services.
- Continue to work with Snuneymuxw to build mutual resilience and collaboration on emergency management including maintaining formal agreements, and sharing training opportunities to prepare for, respond, and recover from emergencies.
- Encourage collaboration with RDN, First Nations, and neighbouring local governments to address food security needs at a regional level.



23

# Truth and Reconciliation



## Next Steps

Ongoing  
Conversations with  
& Formal Referrals

24



# FEEDBACK/DISCUSSION



I LIKE THIS  
DIRECTION



I HAVE SOME  
QUESTIONS



I HAVE  
CONCERNS



25



**How Many First Nations  
Governments are on  
Vancouver Island?**





## TOPICS

- 1 Reconciliation
- 2 Recreation & Wellness
- 3 Phase 3 & Timelines

## Recreation and Wellness



Jan 24 - Discussed Integrated Approach to Parks, Recreation and Culture – moving towards Recreation and Wellness

### TODAY'S UPDATES

1. Accessibility Plan
2. Recreation & Wellness Update



# Accessibility Plan Update



**Accessible BC Act— Summer 2021**

## Requirements:

- Develop accessibility plan and commitment statement
- Have a Committee and feedback mechanism
- Update plan every 3 years and submit to Province



29

# Accessibility Plan Update



## REIMAGINE Process and City Plan:

- Met with the Accessibility Directorate
- Confirmed that City Plan and the linked Integrated Actions Plan will fulfill the legislation requirements
- Already meeting some requirements such as, ACAI, accessible communications etc.

30



# Accessibility Plan Update

## CITY PLAN EMERGING DIRECTION:

### Draft Desired Outcomes

- Many options for people of all ages and abilities to move freely throughout the City, without barriers.
- People of all ages and abilities and income levels have easy access to services and spaces without barriers.

### Draft Policies

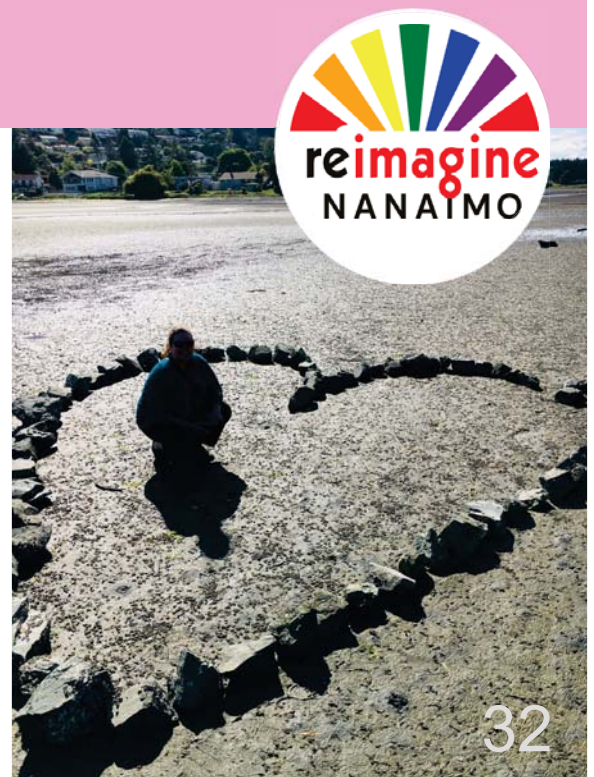
- Administrative
- Parks and Recreation Facilities
- Recreation Programs
- Land Use and Development
- Mobility and Transportation



# Accessibility Plan Update

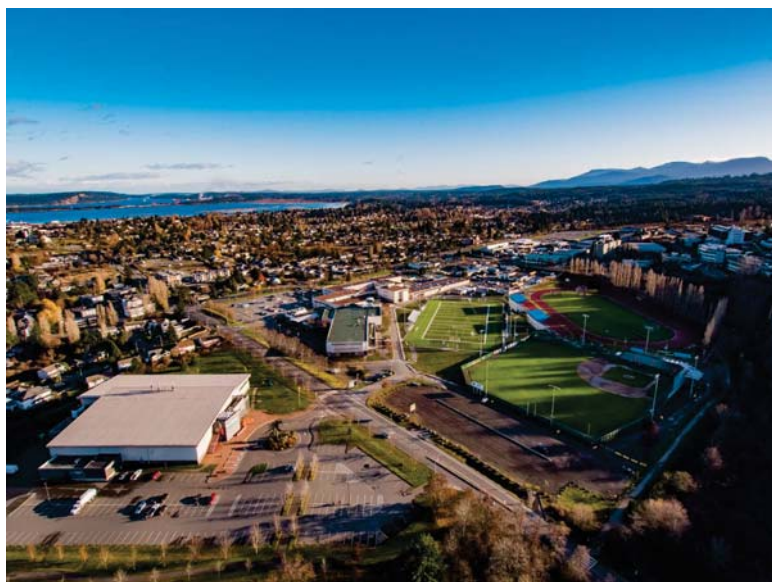
## Next Steps:

- Present to Advisory Committee on Accessibility and Inclusiveness - Feb 23
- Share draft City Plan policies and actions for feedback during Phase 3 Engagement
- Test approach through Phase 3





## Recreation and Wellness Approach— Partnerships and Integration



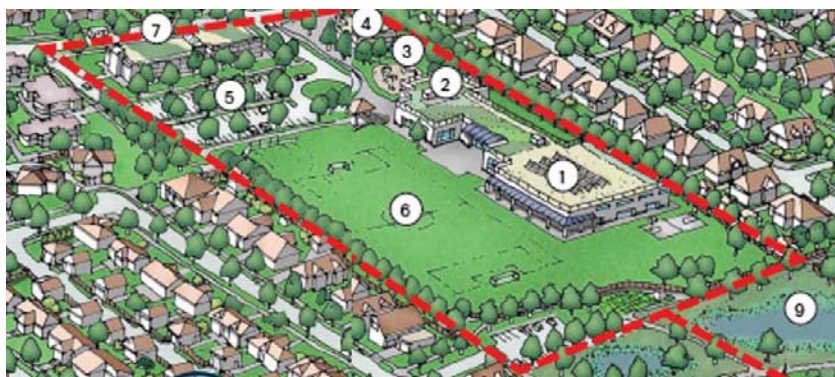
### CITY PLAN EMERGING DIRECTIONS:

Innovative collaborations with School District 68, Snuneymuxw, VIU, Island Health, Province, and other partners

Ongoing support to advance collaborations and align objectives

Partnerships essential to new wellness infrastructure and services

## Recreation and Wellness Approach— Local Hubs Integration



#### Common Neighbourhood Features

- ① School with Joint Use Community Wellbeing Facilities
- ② Daycare
- ③ School / Neighbourhood Play Area
- ④ Potential Small-scale Local Tenants (e.g., corner store, cafe, medical)
- ⑤ Parking Area with Joint School / Community Use (e.g., potential bike / vehicle co-op)

- ⑥ Joint Use Playing Field and Park Space
- ⑦ Central Transit Stop
- ⑧ Community Greenway / Neighbourhood Parkland
- ⑨ Stormwater Ponds
- ⑩ Forest or Stream Buffer with Trail Connection
- ⑪ Multi-Modal Mobility Collector Street

- Recognition that large sites for new public facilities are difficult to assemble
- Consideration of school sites and adjacent lands as local Neighbourhood “hubs” with opportunities for small scale neighbourhood services
- Educational activities can be combined with day-to-day gathering spaces, daycare, play, wellness and community meeting, public art, culture performances, and neighbourhood scale activities
- Local hubs will fill gaps and allow people to live closer to daily needs



# Recreation and Wellness Integration into City Plan Visuals and Graphics

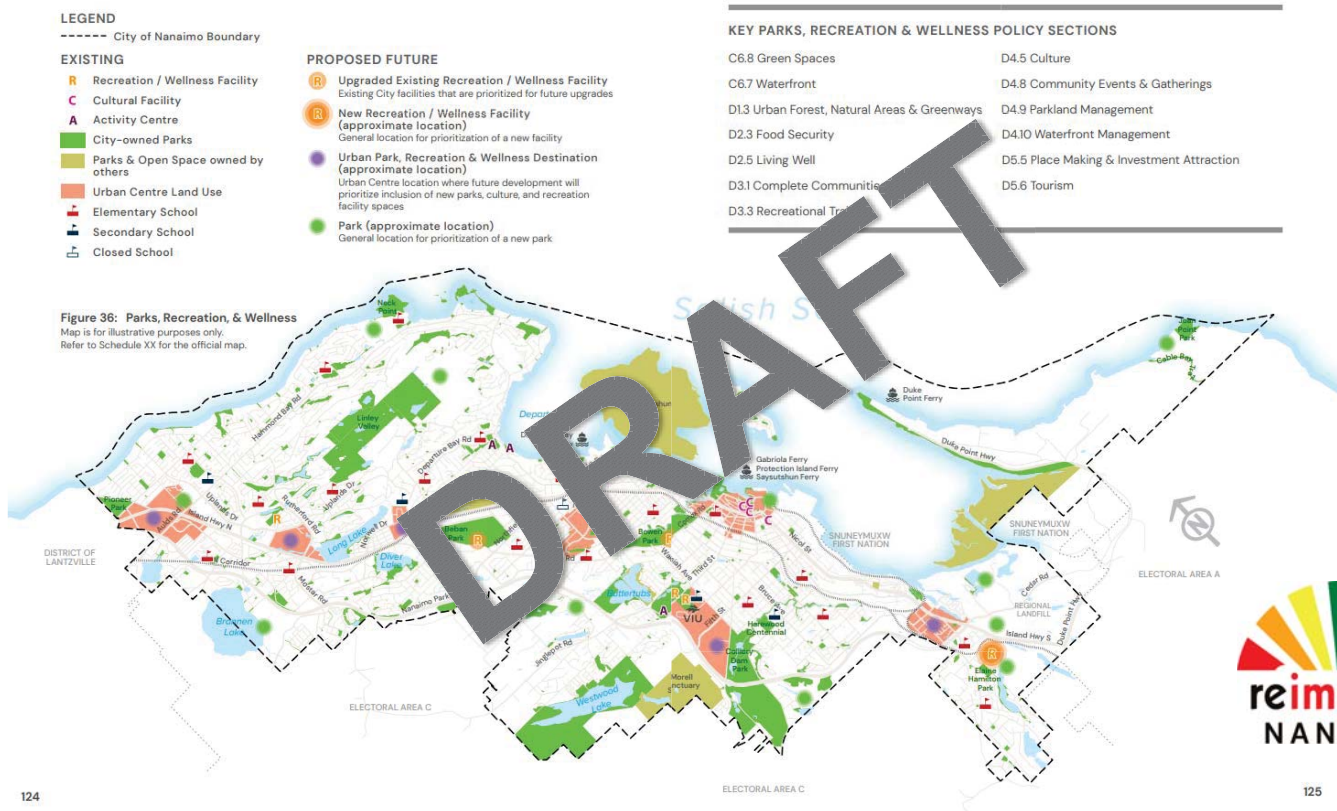


## Draft Plan elements:

- **Visuals** to communicate to a range of audiences
- **Mapping** to show existing and future Recreation and Wellness amenities
- Many policies supporting **enhanced access to services and amenities** for all ages, incomes, backgrounds, abilities....







# FEEDBACK/DISCUSSION



I LIKE THIS  
DIRECTION



I HAVE SOME  
QUESTIONS



I HAVE  
CONCERNS







## TOPICS

- |   |                                |
|---|--------------------------------|
| 1 | Reconciliation                 |
| 2 | Recreation & Wellness          |
| 3 | Phase 3 engagement & Timelines |

## CITY PLAN ENGAGEMENT

### ENGAGEMENT KEY POINTS:

High levels of engagement during phase 1 & 2 reflected back in draft City Plan

Seeking **confirmation** that draft **City Plan** reflects community and **Council** directions

Still in COVID times and engagement is adapting to be as accessible as possible





# CITY PLAN ENGAGEMENT



## ENGAGEMENT KEY POINTS:

Still in COVID times and engagement is adapting to be as accessible as possible



# CITY PLAN ENGAGEMENT



## ENGAGEMENT KEY POINTS FROM PHASE 1 :

### WHAT ARE NANAIMO'S STRENGTHS AND CHALLENGES TODAY?

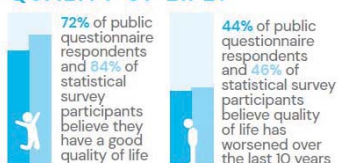
**TOP 3 THINGS PEOPLE LOVE MOST ABOUT NANAIMO**

- 1 Access to nature, parks, and open spaces
- 2 Beautiful waterfront
- 3 Role as Vancouver Island's central "hub" that is well-connected to other communities

**TOP THINGS PARTICIPANTS ARE CONCERNED ABOUT**

- 1 Homelessness
- 2 Social challenges such as public drug use and crime
- 3 Affordability of housing and daily needs

### HOW DO WE VIEW OUR QUALITY OF LIFE?

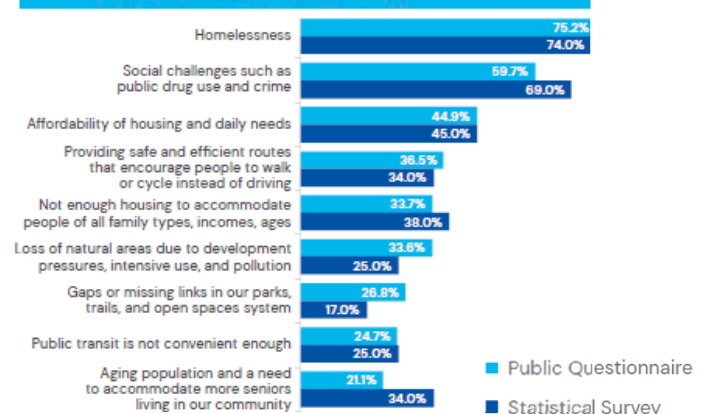


### WHAT IS OUR VISION FOR NANAIMO'S FUTURE?



### WHAT CONCERNS PEOPLE ABOUT NANAIMO

Public Questionnaire & Statistical Survey





# CITY PLAN ENGAGEMENT



## ENGAGEMENT KEY POINTS FROM PHASE 2 :

### PARTICIPANTS' PRIORITY CONSIDERATIONS FOR PLANNING FOR GROWTH

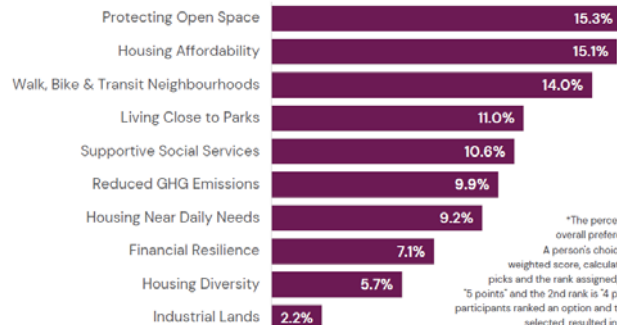


### WHAT SCENARIO DO WE IMAGINE FOR OUR FUTURE?

Participants rated each scenario out of five stars (five being the best). Averages are shown below.



Participants were asked to identify their top 5 priorities to consider when planning for growth. These priorities will help inform choices and trade-offs when considering growth scenarios.



\*The percentage represents the overall preference of respondents. A person's choice is valued through a weighted score, calculated by the number of picks and the rank assigned, where the 1st rank is "5 points" and the 2nd rank is "4 points" etc. The higher participants ranked an option and the more times it was selected, resulted in a higher percentage.

### COMMON THEMES FROM COMMENTS ON SCENARIOS

#### DIRECTIONS PARTICIPANTS TYPICALLY FAVOURED MORE

- ▶ Opportunities to densify and increase attraction of downtown
- ▶ Having services closer to many residents
- ▶ Building on what we have

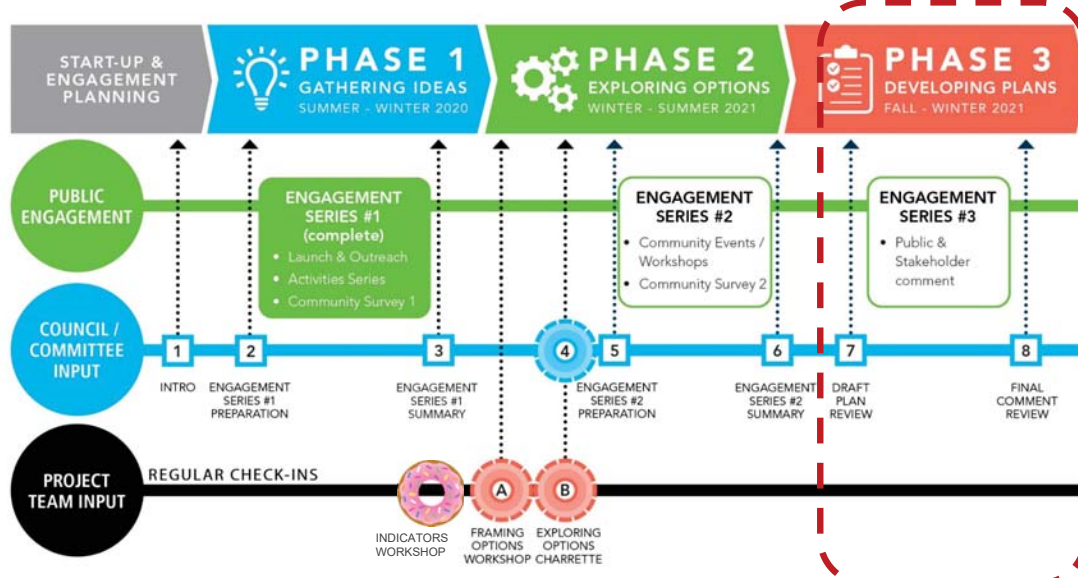
#### DIRECTIONS PARTICIPANTS TYPICALLY FAVOURED LESS

- ▶ Patterns that would lead to more outward growth
- ▶ Separated employment areas that would require auto travel
- ▶ Directions that could spread resources too thin (a little everywhere)

# PHASE 3 ENGAGEMENT

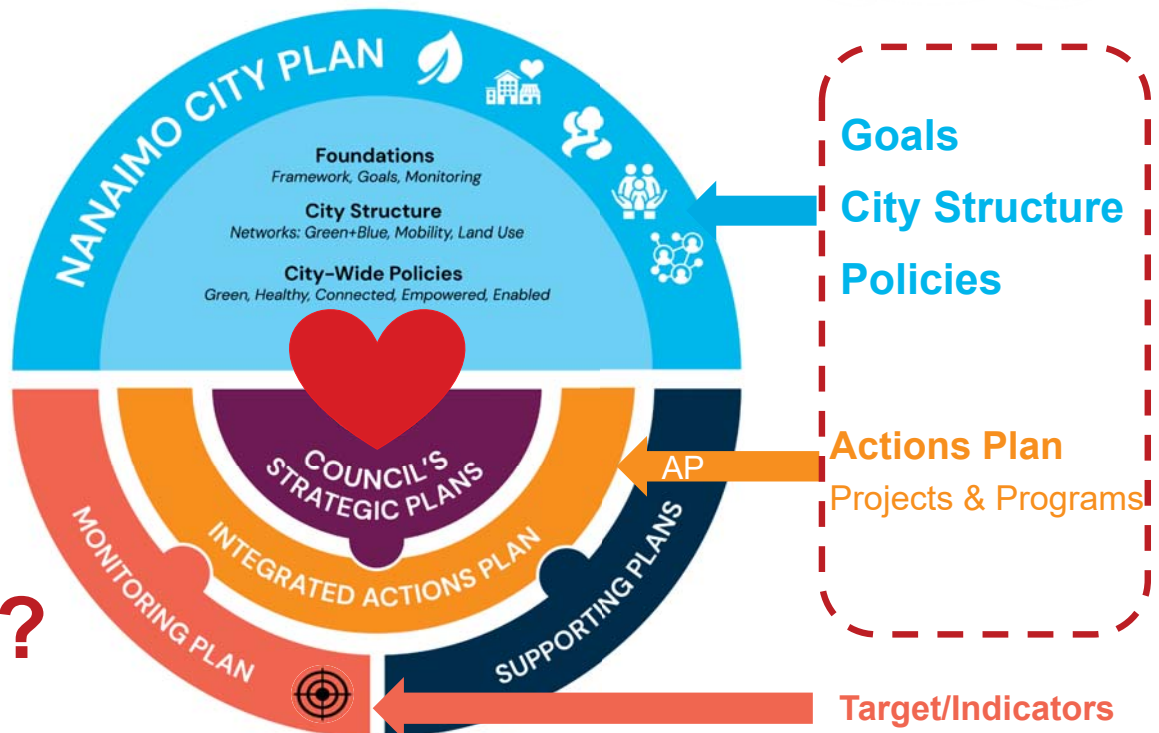


We are here





# What are we asking for in Phase 3?



## Engagement Methods Phase 3

- Draft City Plan
- Story Map (linked to Plan Sections)
- Online/Print Survey Information
- Statistically-Valid Survey
- 12 Themes
- Workshops
- Informal & Formal Referrals
- Video Summary





# Phase 3 Launch – Feb 28



<b>Access to Nature &amp; Outdoor Recreation</b> We value our green spaces and love being minutes away from nature and places to play outdoors. Preserving this access for the future is essential.	<b>Central Hub Identity</b> We're excited about our role as the Central Hub of Vancouver Island and wish to build on this with effective transportation connections, economic development, and identity building.	<b>Neighbourhood Character</b> We value our existing neighbourhoods and the balance between more urban and more residential areas. Maintaining a mix of urban and residential areas and protecting the character of neighbourhoods is important.
<b>A Waterfront Identity</b> The waterfront is part of who we are, and we want more opportunities to connect with and celebrate it.	<b>City Living</b> We are preparing to embrace a shift from more suburban to urban living and are excited about cultural, entertainment, and public living opportunities and daily needs closer to home. However, it's also important to transition thoughtfully with attention to place-making and character.	<b>Thriving &amp; Creative Downtown</b> We want to see Downtown Nanaimo become the vibrant, engaging centre for arts, culture, entertainment, tourism, business, and employment that has been envisioned over the years.
<b>A Green Approach</b> We are getting ready to embrace our role as a climate leader, making choices that will reduce our impacts, protect our natural assets, and position us for a greener future. However, we recognize that changing our behaviours will be challenging.	<b>Mobility Choice</b> We would like to move around our community more easily by foot and bike, and we want our transit to be more frequent, faster, and accessible, but we're also coming to terms with reducing our reliance on automobiles.	<b>Supportive City</b> We are worried about the increasing social challenges our community is facing and how to help all people to live healthier, happier lives while keeping our city feeling safe and welcoming.
<b>Inclusive &amp; Equitable</b> We want to respect and respond to the perspectives, values, and needs of all individuals and groups in Nanaimo and create spaces and programs that are for everyone.	<b>Affordable City</b> We are concerned about the rising costs of living in our city and are seeking ways to make it possible for people of all socio-economic backgrounds to find their home here.	<b>Great Jobs &amp; Businesses</b> We wish to attract and maintain great businesses and institutions that provide quality jobs so we can work close to home in employment that fulfills us.

## 12 Engagement Themes

# Phase 3 Council Timeline





# Next Council Meetings

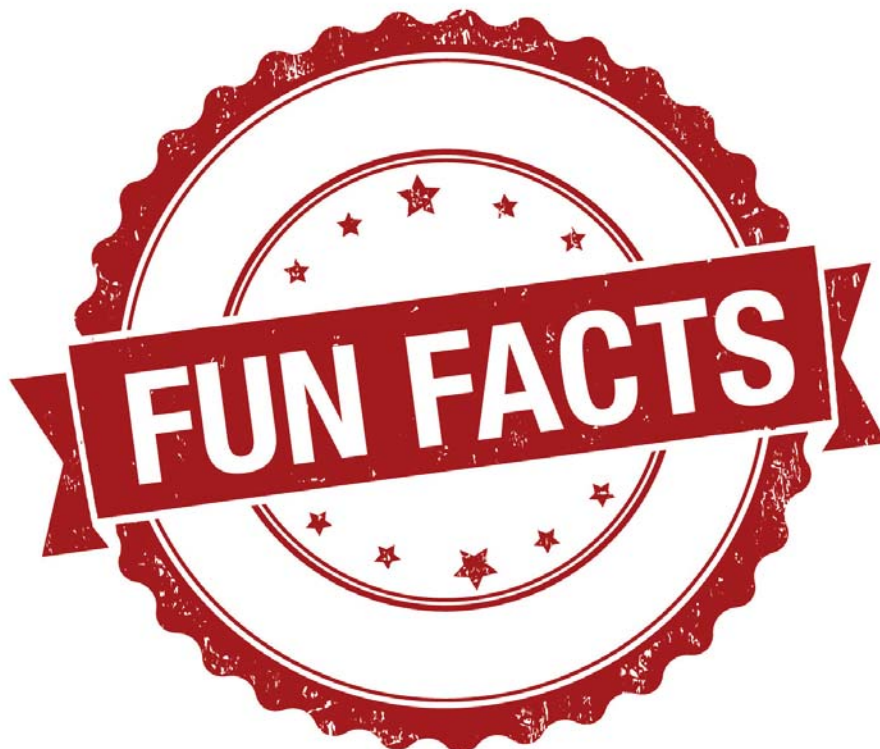


## GPC 28 FEBRUARY 2022

City Plan Review (draft document)

## COUNCIL 28 FEBRUARY 2022

Phase 3 Engagement Launch







Nustilich