



# MONITORING STRATEGY: THE NANAIMO MONITORING BAR

## TELL ME MORE: WHAT IS THE NANAIMO MONITORING BAR?

The **Nanaimo Monitoring Bar** is an annual summary of progress on the **23 Key Indicators**. The aim is to stay in the centre, the “sweet spot” where we are meeting our social foundations while living within our ecological ceiling.

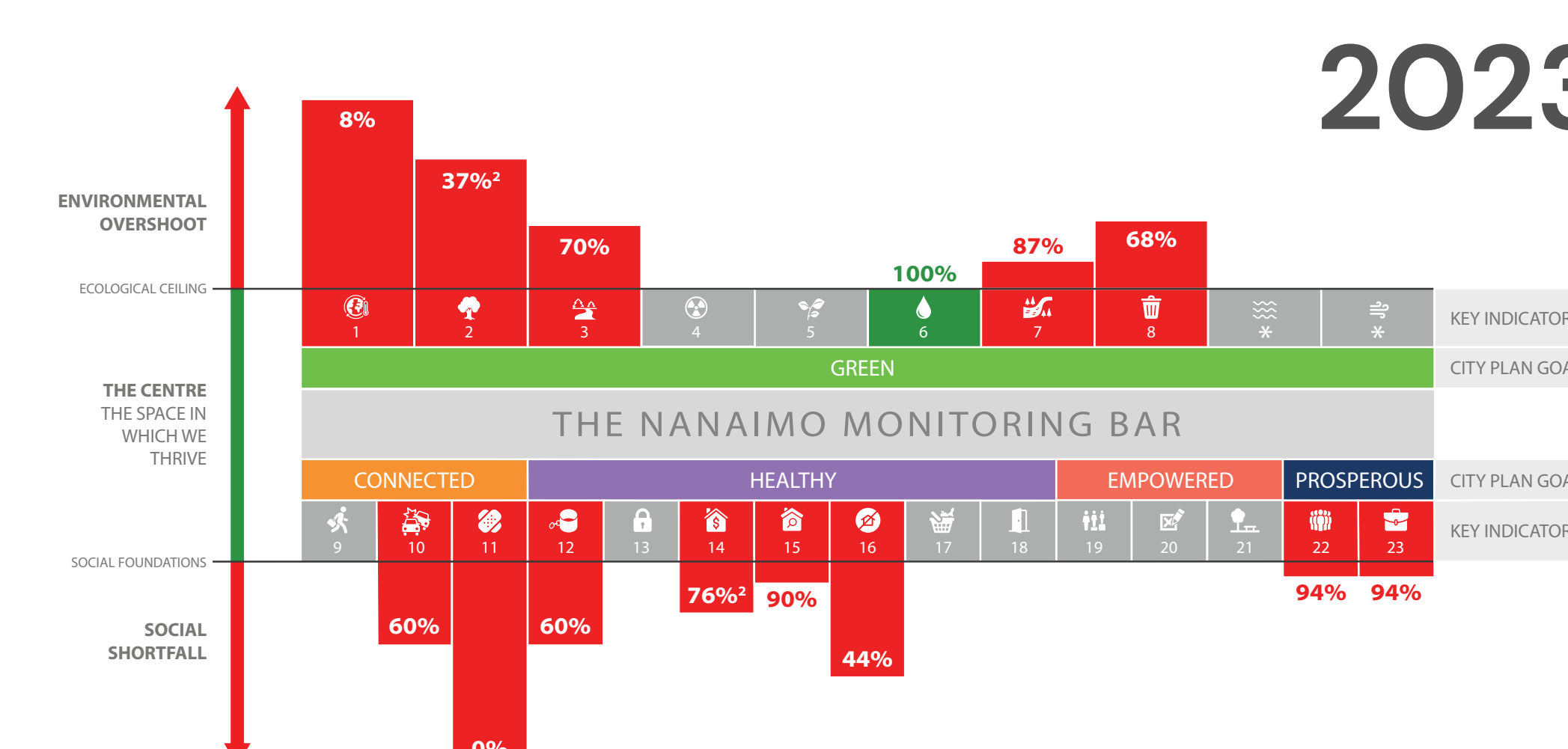
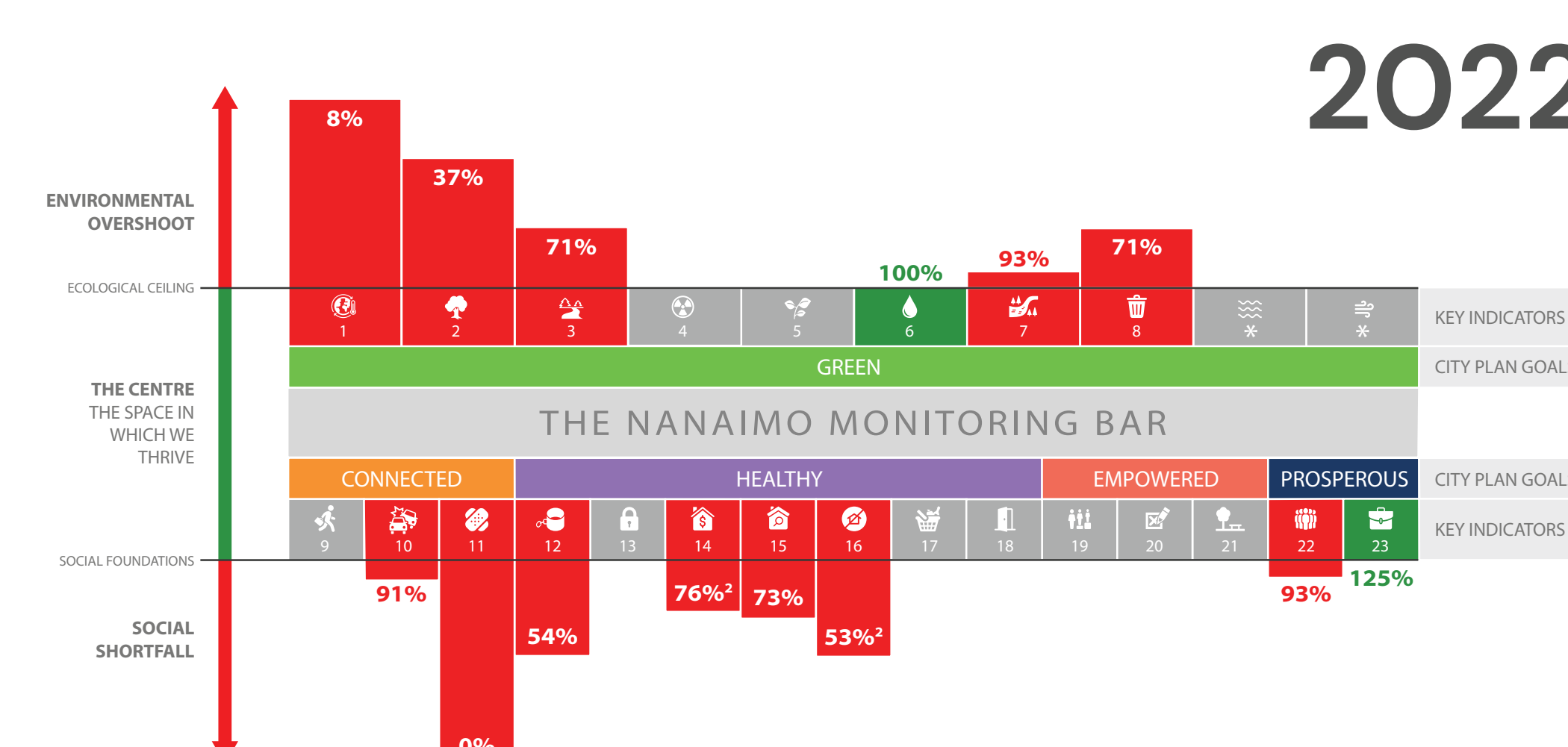
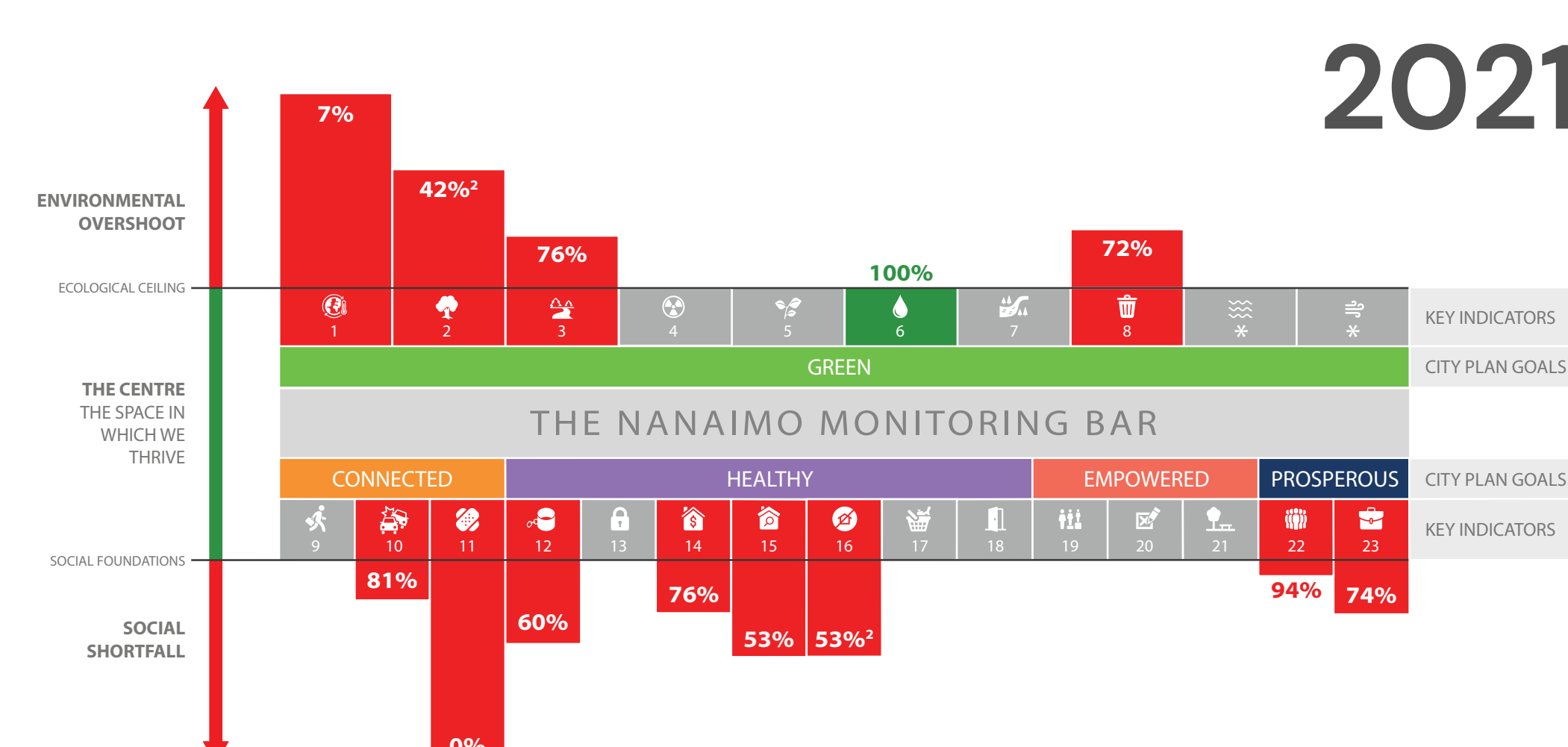
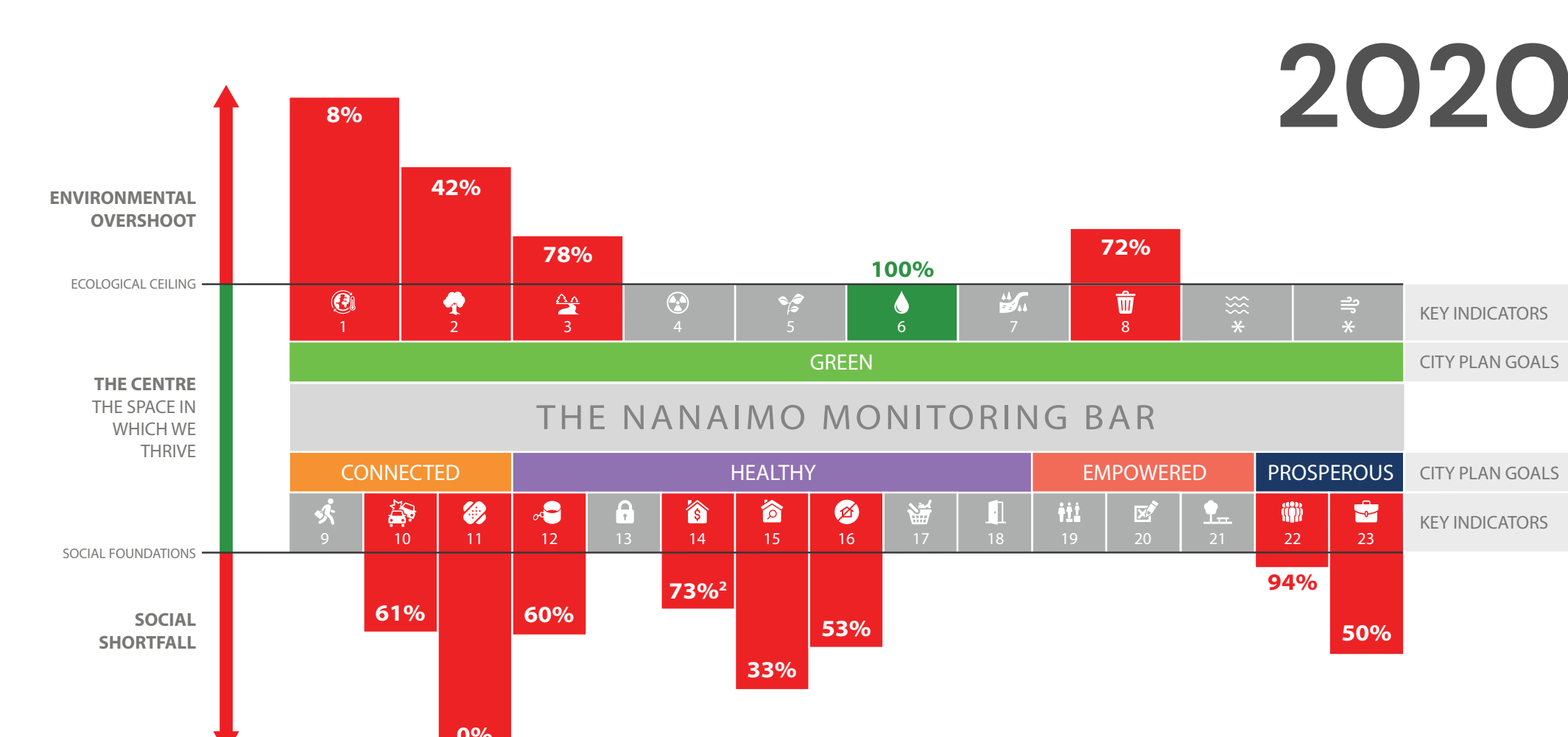
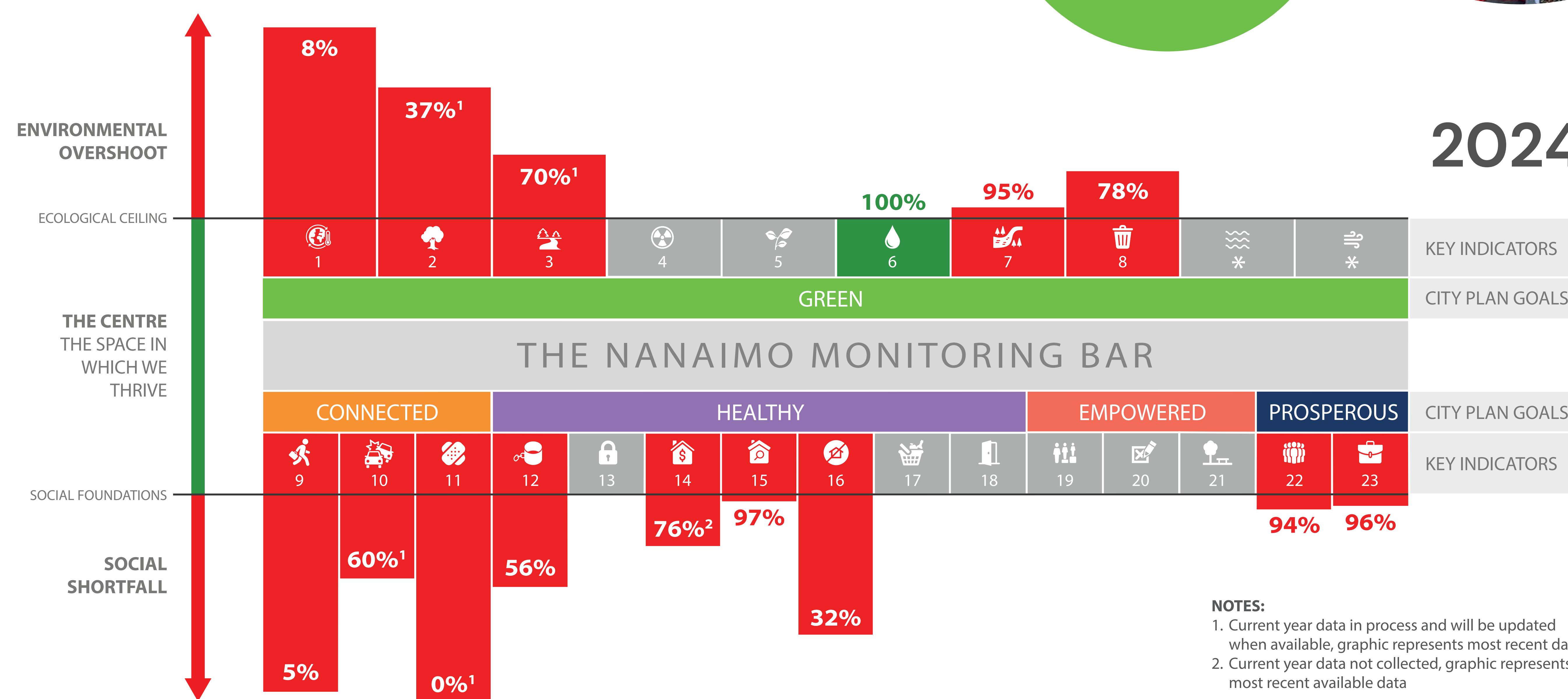
The Monitoring Bar helps illustrate the challenges of staying inside our desired boundaries from both top and bottom simultaneously. It recognizes where we are doing well and where we need to improve. We can use it to view our progress over time so that our actions propel us towards our ultimate goals.

- Green** ( $\geq 100\%$ ) means we are operating sustainably
- Red** ( $< 100\%$ ) shows we are transgressing into environmental overshoot or social shortfall. The closer we are to 100%, the closer we are to our goals
- Grey** indicates we're still gathering data

## LIST OF KEY INDICATORS

| Icon | #  | Indicator  |
|------|----|--|
|      | 1  | Community Greenhouse Gas Emissions                             |
|      | 2  | Tree Canopy Coverage - Areas with Sufficient Tree Canopy       |
|      | 3  | Fresh Water Quality  |
|      | 4  | Chemical Pollution   |
|      | 5  | Biodiversity   |
|      | 6  | Sufficiency of Reservoir Supply                                |
|      | 7  | Environmental Flow   |
|      | 8  | Municipal Residential Waste Diversion                          |
|      | *  | Ocean Health   |
|      | *  | Air Quality  |
|      | 9  | Access to Basic Daily Needs by Active Transportation (Walking) |
|      | 10 | Traffic-Related Fatalities                                     |
|      | 11 | Traffic-Related Injuries                                       |

| Icon | #  | Indicator                              |
|------|----|--|
|      | 12 | Real Crime                             |
|      | 13 | Perception of Safety                   |
|      | 14 | Housing Affordability                  |
|      | 15 | Vacancy Rate                           |
|      | 16 | Homelessness - Temporary Relief        |
|      | 17 | Food Security                          |
|      | 18 | Recreation, Culture & Wellness Support |
|      | 19 | Equity                                 |
|      | 20 | Civic Engagement                       |
|      | 21 | Access to Public Spaces & Events       |
|      | 22 | Workforce Sufficiency                  |
|      | 23 | Labour Market Performance              |







# A CONNECTED NANAIMO: EQUITABLE ACCESS & MOBILITY INDICATORS AT-A-GLANCE

## WHAT DOES CITY PLAN SAY?



**A Connected Nanaimo** allows people to easily access what matters to them. Everyone needs to be able to get around safely, equitably, and comfortably. Complete, compact neighbourhoods that provide daily needs closer to home support more walking, rolling, and cycling. A well linked multi-modal transportation system provides more choices for traveling through our city and beyond. A Connected Nanaimo means access and mobility for everyone.



## CONNECTED INDICATORS

| TOPIC                | INDICATORS  | SUSTAINABILITY SCORE |              |              |
|----------------------|---|----------------------|--------------|--------------|
|                      |   | 2022                 | 2023         | 2024         |
| Car-Free Daily Needs | KEY INDICATORS  |                      |              |              |
|                      | Access to Daily Needs by Walking                        | not analyzed         | not analyzed | 5%           |
|                      | UNDER DEVELOPMENT: Access to Daily Needs by Other Modes | not analyzed         | not analyzed | not analyzed |
|                      | SUPPORTIVE INDICATORS                                   |                      |              |              |
| Road Safety          | KEY INDICATORS  |                      |              |              |
|                      | Traffic Related Fatalities                              | 91%                  | 60%          | data pending |
|                      | Traffic Related Injuries                                | 0%                   | 0%           | data pending |
|                      | SUPPORTIVE INDICATORS                                   |                      |              |              |
|                      | ▶ Number of traffic-related fatalities                  |                      |              |              |
|                      | ▶ Number of traffic-related injuries                    |                      |              |              |

## WHAT DO SUSTAINABILITY SCORE PERCENTAGES MEAN?



We are meeting our Goal and operating sustainably



We are not yet meeting our Goal. The closer the number is to 100%, the closer we are to the Goal

**REMEMBER:** Goals are what we work towards. They are aspirational. It is okay if we're not meeting them yet. As we complete actions, we hope to see the Key Indicators moving closer towards the 100% threshold that shows we are achieving our Goal.





# A CONNECTED NANAIMO: EQUITABLE ACCESS & MOBILITY CAR-FREE DAILY NEEDS

## KEEPING WATCH: WHAT ARE WE MONITORING?



### KEY INDICATOR #9: ACCESS TO BASIC DAILY NEEDS BY WALKING

Current method measures walking routes. In future years bike routes will also be measured.

2024  
SUSTAINABILITY  
SCORE  
**5%**

#### WHY?

So everyone can access their basic daily needs by walk, bike, or transit

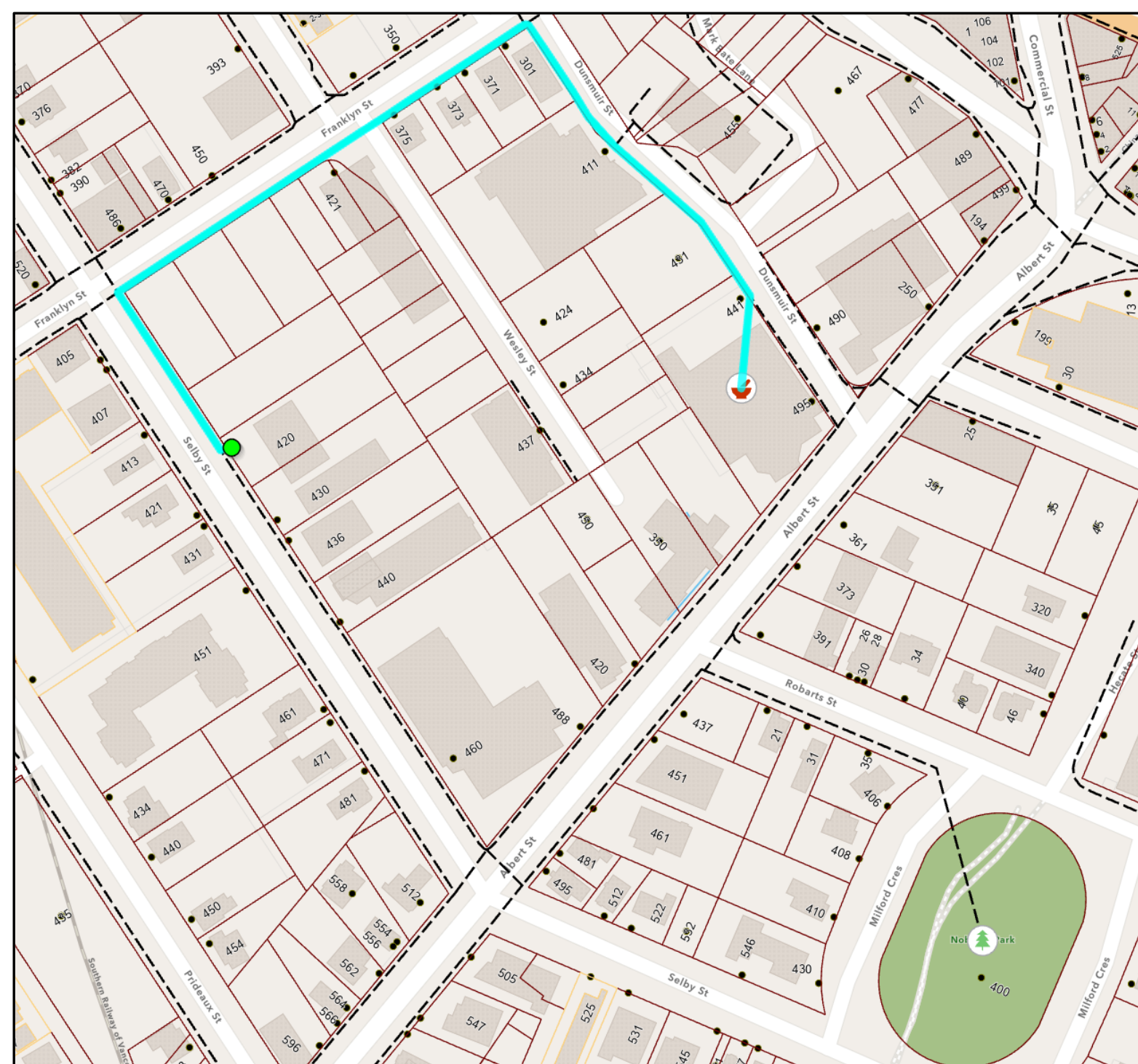
#### HOW?

GIS model is under development to map routes between origins and destinations

#### END GOAL

100% of residents could reasonably and safely walk, bike, or bus to basic daily needs

#### WHAT DOES THE GIS MODEL DO?



#### Identify Origin Locations:

- ▶ 26,000 residential properties throughout the City

#### Identify Basic Needs Destinations:

- ▶ Schools
- ▶ Parks and green space
- ▶ Pharmacies
- ▶ Grocery stores

#### Identify Safe Pedestrian Routes between Origins and Destinations:

- ▶ Concrete sidewalks
- ▶ Marked and unmarked crosswalks

#### Identify potential connections / barriers and model future scenarios to see how they impact connectivity

## TAKING ACTION: WHAT ARE WE DOING?

- ▶ Adding bike parking / end of trip facilities around key trip generators
- ▶ Illuminating the E & N Trail starting from Northfield Road north
- ▶ Creating a Linley Valley Park Greenway East-West Route as an accessible east-west route between Rutherford Road and Linley Road / Hammond Bay Road
- ▶ Creating an Off Bowen Road Active Mobility Route from East Wellington to Buttertubs, starting with the section between East Wellington Road and Buttertubs Drive when redevelopment of adjacent land occurs
- ▶ Adding Third Street Pedestrian and Cycling Facilities from Watfield Avenue to Pine Street
- ▶ Adding a Downtown Transit Hub to improve connectivity between Downtown and surrounding neighbourhoods and Urban Centres
- ▶ Completing Country Club Urban Centre mobility upgrades
- ▶ Engaging with the Advisory Committee for Accessibility and Inclusion so that the City's mobility infrastructure supports all users
- ▶ Working with School District 68 to create Active School Travel Plans that build life skills and support healthy and sustainable mobility
- ▶ Undertaking a broad-scale review of how the City manages parking, including:
  - i) implementation of virtual pay options across downtown
  - ii) the reintroduction of pay-parking in areas where meters were lost to vandalism and
  - iii) City-led establishment of Transit-Oriented Area Parking Requirements Downtown

## SUPPORTIVE INDICATORS

Transportation by mode – commuting by car

**86.8%**  
in 2021

UP from 85.6% in 2016

Transportation by mode – commuting by transit

**4.0%**  
in 2021

DOWN from 4.1% in 2016

Transportation by mode – commuting by walk

**5.2%**  
in 2021

DOWN from 6.4% in 2016

Transportation by mode – commuting by bike

**1.4%**  
in 2021

DOWN from 1.6% in 2016

Census data, collected every 5 years, illustrates broad trends in transportation choices. NOTE: 2021 census data likely impacted by the COVID-19 pandemic

Distance driven (km/person/day)

**14 km**  
in 2011

Comparable data not available

As basic needs become more accessible by walk, bike, or transit, distance driven should trend downwards

Vehicle ownership (number of vehicles owned in the City)

**58,595**  
in 2024

UP from 57,261 in 2023

The desired target is one personal vehicle per private dwelling





# A CONNECTED NANAIMO: EQUITABLE ACCESS & MOBILITY ROAD SAFETY

## KEEPING WATCH: WHAT ARE WE MONITORING?



### KEY INDICATOR #10: TRAFFIC RELATED FATALITIES

2023  
SUSTAINABILITY  
SCORE  
**60%**



### KEY INDICATOR #11: TRAFFIC RELATED INJURIES

2023  
SUSTAINABILITY  
SCORE  
**0%**

#### WHY?

So everyone can move safely in their community

#### HOW?

City vets annual data on traffic related fatalities and injuries from Insurance Corporation of British Columbia (ICBC)

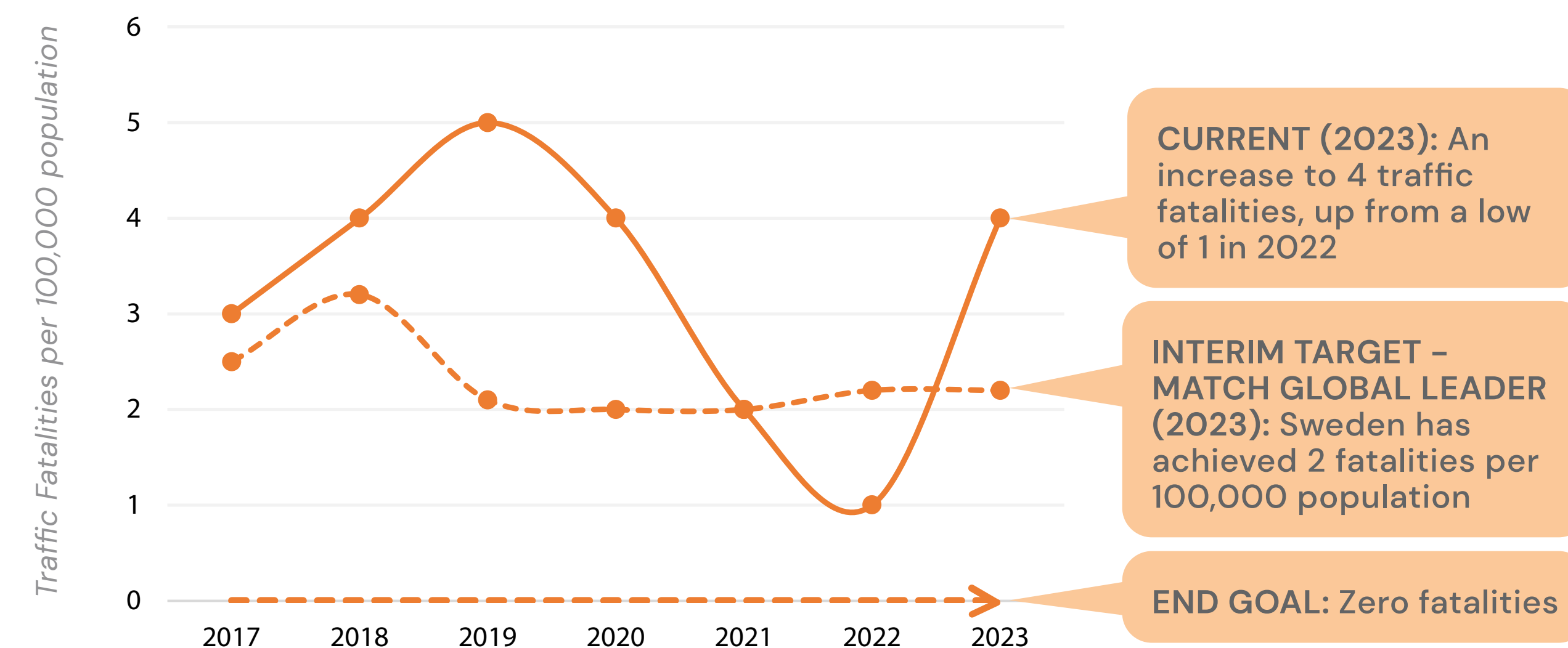
#### END GOAL

Zero-traffic related injuries and fatalities

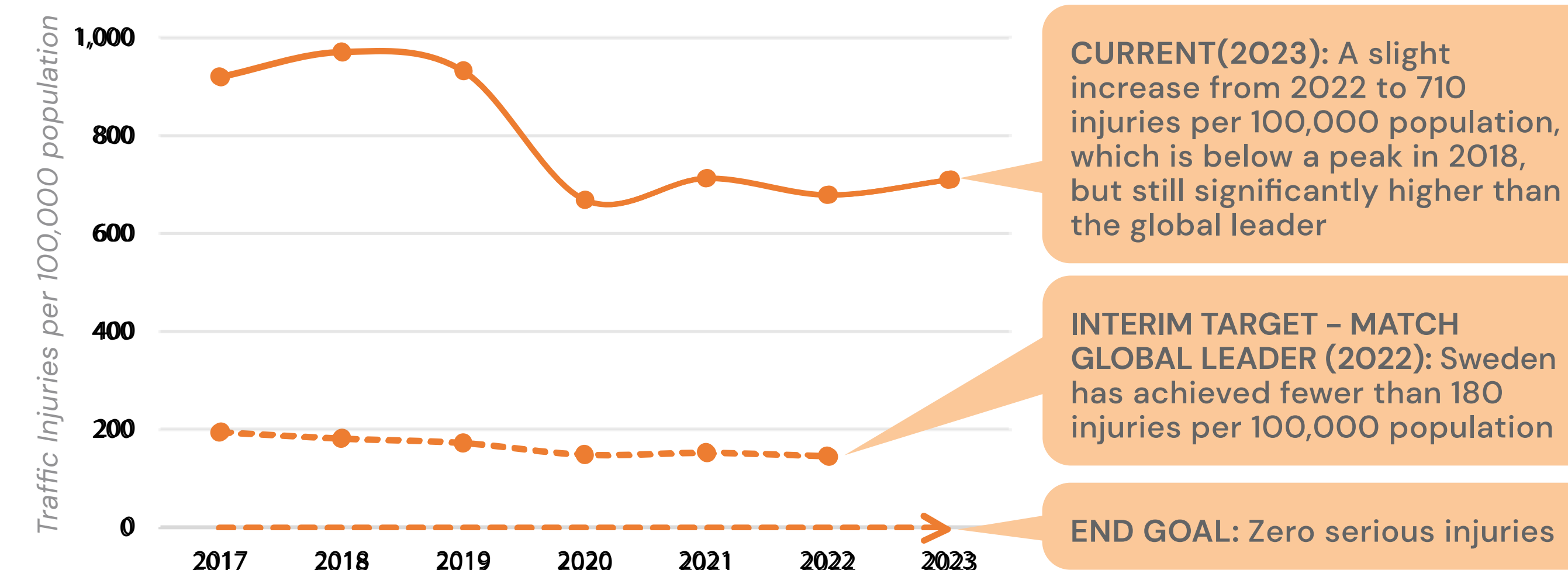
#### INTERIM GOAL

Match global leader (Sweden)

#### WHAT ARE WE SEEING SO FAR? | TRAFFIC- RELATED FATALITIES



#### WHAT ARE WE SEEING SO FAR? | TRAFFIC- RELATED INJURIES



## TAKING ACTION: WHAT ARE WE DOING?

- ▶ **Completing traffic calming** (range of projects)
- ▶ **Creating a Vision Zero Toolkit** to support monitoring, education, and behavioural improvements
- ▶ **Piloting emerging technology that can predict collision patterns at intersections** to allow proactive changes to higher-risk intersections
- ▶ **Transitioning Island Highway (19A) through Urban Centres to a Mobility Arterial Street** with enhancements to reduce vehicle speeds and support multi-modal transportation (with MOTT)
- ▶ **Improving Cranberry Avenue/Island Hwy Intersection** to reduce congestion for vehicles entering or leaving the Cinnabar Valley via Cranberry Avenue
- ▶ **Completing Design Commercial** to update Commercial Street from Front Street to Victoria Crescent to calm traffic and prioritize pedestrians
- ▶ **Engaging with Advisory Committee for Accessibility and Inclusion** to support design and project priorities for road safety
- ▶ **Completing various pedestrian improvements** to create safer routes and crossing points
- ▶ **Upgrading Third Street pedestrian and cycling facilities** from Watfield Avenue to Pine Street



### SUPPORTIVE INDICATORS

Number of traffic-related fatalities

**4**  
fatalities in 2023

↑ UP from 1 in 2022

Number of traffic-related injuries

**710**  
injuries in 2023

↑ UP from 679 in 2022







# AN EMPOWERED NANAIMO: RECONCILIATION, REPRESENTATION, & INCLUSION INDICATORS AT-A-GLANCE



## WHAT DOES CITY PLAN SAY?

An Empowered Nanaimo feels welcoming and safe to all those who choose this city as home. Together, we are actively making progress towards reconciliation.

We are relearning the past, acknowledging the truth of past wrongs, and committing to working together respectfully and collaboratively towards a common future. An Empowered Nanaimo honours and celebrates the long and rich history and living culture of the First Peoples on whose Traditional Territories our city is situated. Our differences are what makes our community interesting, innovative, and vital.

An Empowered Nanaimo is about being an inclusive and accessible community. One that provides equitable opportunities for all to enjoy and participate in community activities and spaces, including our parks and waterfronts; recreation, cultural and heritage facilities; and programs.

Inclusion involves hearing each voice in civic life – through effective engagement and public process – where everyone has an opportunity to contribute and see themselves as part of our city's story and future. By embracing diversity, we can find what unifies our community spirit.



## EMPOWERED INDICATORS

| TOPIC                           | INDICATORS  | SUSTAINABILITY SCORE |              |              |
|---------------------------------|---|----------------------|--------------|--------------|
|                                 |   | 2022                 | 2023         | 2024         |
| Equity                          | KEY INDICATOR   |                      |              |              |
|                                 | UNDER DEVELOPMENT:<br>Key Indicator(s) to be Identified   | not analyzed         | not analyzed | not analyzed |
|                                 | SUPPORTIVE INDICATORS   |                      |              |              |
|                                 | ▶ Number of Leisure Economic Access Pass (LEAP) Clients   |                      |              |              |
| Civic Engagement                | KEY INDICATOR   |                      |              |              |
|                                 | UNDER DEVELOPMENT:<br>Key Indicator(s) to be Identified   | not analyzed         | not analyzed | not analyzed |
|                                 | SUPPORTIVE INDICATOR  |                      |              |              |
|                                 | ▶ Voter turnout   |                      |              |              |
| Access to Public Spaces & Event | KEY INDICATOR   |                      |              |              |
|                                 | UNDER DEVELOPMENT:<br>Key Indicator(s) to be Identified   | not analyzed         | not analyzed | not analyzed |
|                                 | SUPPORTIVE INDICATORS   |                      |              |              |
|                                 | ▶ Number of attendees of free recreational events (Winter Wonderland and Lions Free Skate)<br>▶ Number of free admissions at Nanaimo Art Gallery<br>▶ Total audience served at Nanaimo Art Gallery<br>▶ Total audience served at the Port Theatre |                      |              |              |

## WHY ARE EMPOWERED KEY INDICATORS UNDER DEVELOPMENT?

Many of the other goal areas collect numerical data with relative ease. The Empowered Goal is largely about how people feel in their community. This means the indicators may rely more heavily on asking people for input rather than on numerical data. We're working on identifying approaches. In the meantime, we are tracking Supportive Indicators to form initial insights.

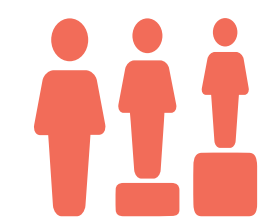




# AN EMPOWERED NANAIMO: RECONCILIATION, REPRESENTATION, & INCLUSION DEVELOPING KEY INDICATORS



The City is researching options for Key Indicators to support the Empowered Goal. Below are ideas and background for the topic areas being considered.



## KEY INDICATOR #19: EQUITY (UNDER DEVELOPMENT)

**END GOAL:** Everyone has the resources and services necessary to thrive in each person's own unique identity, circumstances, and history.

### HOW?

One way to measure distribution of resources and community benefits is through the lens of income distribution in the city. This approach would use GIS to measure how select benefits differ between the wealthiest and the poorest neighbourhoods of Nanaimo. A starting point could be using other indicators that the City is already measuring like tree canopy cover, housing affordability, and perception of safety.

### WHO ELSE IS MEASURING EQUITY?

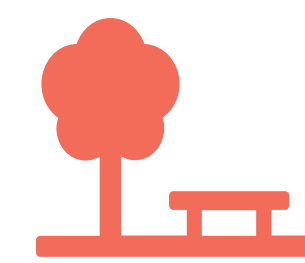
Several communities have developed robust Equity Indicator programs that provide insights and ideas for developing an equity indicator that works for Nanaimo:

- ▶ [Calgary Equity Index](#)
- ▶ [Dallas Equity Indicators](#)
- ▶ [Toronto Urban HEART](#)



## KEY INDICATOR #20: CIVIC ENGAGEMENT (UNDER DEVELOPMENT)

**END GOAL:** Everyone feels informed and represented.



## KEY INDICATOR #21: ACCESS TO PUBLIC SPACES (UNDER DEVELOPMENT)

**END GOAL:** Everyone feels safe, welcomed, and included in City-owned facilities, public spaces, and events.

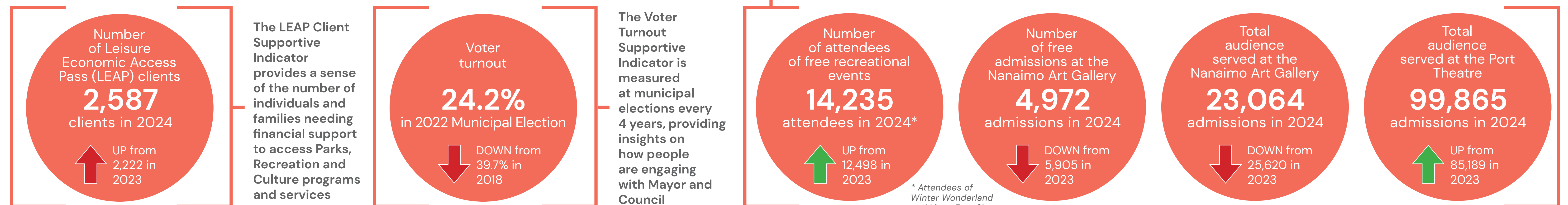
### HOW?

Both of the above indicators require us to gather information about how people feel. A method being considered is a statistically valid survey completed every 2-3 years. Developing questions that provide useful insights will be a critical step in this process.

## TAKING ACTION: WHAT ARE WE DOING?

- ▶ **Revising the internal style guide** to standardize gender inclusivity and neutrality
- ▶ **Supporting the Advisory Committee on Accessibility and Inclusiveness (ACAI)** to find ways to create a more welcoming, inclusive atmosphere
- ▶ **Exploring technologies to improve access to City services** online, via phone, and in person
- ▶ **Improving public transit infrastructure** in collaboration with the RDN and ACAI
- ▶ **Inventorying and assessing City public spaces to identify accessibility and inclusivity limitations** including beaches, pools, bike parks, arenas, and recreation complexes, and completing upgrades to remove barriers
- ▶ **Identifying and filling service gaps in underserved areas** through projects like the creation of a South End Community Centre
- ▶ **Supporting the Nanaimo Art Gallery** phased development plan
- ▶ **Maintaining a Downtown Event Revitalization Funding Grant** to support initiatives that attract residents and visitors to Downtown
- ▶ **Updating parks spaces throughout the community** to improve amenities and recreational opportunities and support public use and enjoyment
- ▶ **Working with local First Nations artists and encouraging public art that supports reconciliation** while fostering a deeper understanding and appreciation of local First Nations culture

## SUPPORTIVE INDICATORS







# A GREEN NANAIMO: RESILIENT & REGENERATIVE ECOSYSTEMS INDICATORS AT-A-GLANCE

## WHAT DOES CITY PLAN SAY?

A **Green Nanaimo** is about how we can stay within our ecological limits while meeting the needs of all. It is about advancing collective knowledge, living in harmony with our environment, and responding to and reducing the impacts of climate change, while protecting natural systems, people, businesses, and infrastructure. It means making decisions that prioritize a resilient and regenerative environment, moving us towards a city that gives back to our natural world rather than taking from it. A Green Nanaimo recognizes and embraces its role as a sustainable city that helps maintain what we value in our larger region and beyond.

## GREEN INDICATORS

| TOPIC                  | INDICATORS   | SUSTAINABILITY SCORE |              |              |
|------------------------|--|----------------------|--------------|--------------|
|                        |  | 2022                 | 2023         | 2024         |
| Climate Change         | KEY INDICATOR  |                      |              |              |
|                        | Community Greenhouse Gas (GHG) Emissions   | 8%                   | 8%           | 8%           |
|                        | SUPPORTIVE INDICATORS  |                      |              |              |
|                        | <ul style="list-style-type: none"><li>▶ Community GHG emissions (tCO<sub>2</sub>e)</li><li>▶ GHG emissions from buildings and infrastructure (tCO<sub>2</sub>e)</li><li>▶ GHG emissions from transportation (tCO<sub>2</sub>e)</li><li>▶ GHG emissions per capita (tCO<sub>2</sub>e/person)</li><li>▶ Corporate GHG emissions (tCO<sub>2</sub>e)</li></ul> |                      |              |              |
| Land Use & Land Health | KEY INDICATOR  |                      |              |              |
|                        | Tree Canopy Coverage – Areas with Sufficient Tree Canopy   | 37%                  | not analyzed | data pending |
|                        | SUPPORTIVE INDICATOR   |                      |              |              |
|                        | <ul style="list-style-type: none"><li>▶ City-wide tree canopy coverage</li></ul>   |                      |              |              |
| Waterway Health        | KEY INDICATOR  |                      |              |              |
|                        | Fresh Water Quality  | 71%                  | 70%          | data pending |

| TOPIC              | INDICATORS   | SUSTAINABILITY SCORE |      |              |
|--------------------|--|----------------------|------|--------------|
|                    |  | 2022                 | 2023 | 2024         |
| Chemical Pollution | KEY INDICATOR  |                      |      |              |
|                    | Fresh Water Quality<br>(uses same indicator as Waterway Health)  | 71%                  | 70%  | data pending |
| Biodiversity       | UNDER DEVELOPMENT: Indicators to be Identified   |                      |      |              |
| Water Resources    | KEY INDICATORS   |                      |      |              |
|                    | Sufficiency of Reservoir Supply  | 100%                 | 100% | 100%         |
|                    | Environmental Flow   | 93%                  | 87%  | 95%          |
|                    | SUPPORTIVE INDICATORS  |                      |      |              |
|                    | <ul style="list-style-type: none"><li>▶ Number of days water level at Jump Lake is between 31% and 35%</li><li>▶ Annual total water consumption (cu.m)</li><li>▶ Average water consumption per person per day (liters/person/day)</li><li>▶ Residential water consumption per person (liters/person/day)</li></ul> |                      |      |              |
| Waste              | KEY INDICATOR  |                      |      |              |
|                    | Municipal Residential Waste Diversion  | 71%                  | 68%  | 78%          |
|                    | SUPPORTIVE INDICATOR   |                      |      |              |
|                    | <ul style="list-style-type: none"><li>▶ Annual household waste sent to landfill (kg/household)</li></ul>   |                      |      |              |
| Ocean Health       | NOT CURRENTLY MONITORING: Outside Municipal Jurisdiction   |                      |      |              |
| Air Quality        | NOT CURRENTLY MONITORING: Outside Municipal Jurisdiction   |                      |      |              |

## WHAT DO SUSTAINABILITY SCORE PERCENTAGES MEAN?

|        |   |        |  |
|--------|---|--------|--|
| ≥ 100% | We are meeting our Goal and operating sustainably | < 100% | We are not yet meeting our Goal. The closer the number is to 100%, the closer we are to the Goal |
|--------|---|--------|--|

**REMEMBER:** Goals are what we work towards. They are aspirational. It is okay if we're not meeting them yet. As we complete actions, we hope to see the Key Indicators moving closer towards the 100% threshold that shows we are achieving our Goal.





# A GREEN NANAIMO: RESILIENT & REGENERATIVE ECOSYSTEMS CLIMATE CHANGE

## KEEPING WATCH: WHAT ARE WE MONITORING?



### KEY INDICATOR #1: COMMUNITY GREENHOUSE GAS (GHG) EMISSIONS

2024  
SUSTAINABILITY  
SCORE  
**8%**

tCO<sub>2</sub>e = tonnes  
of carbon dioxide  
equivalent

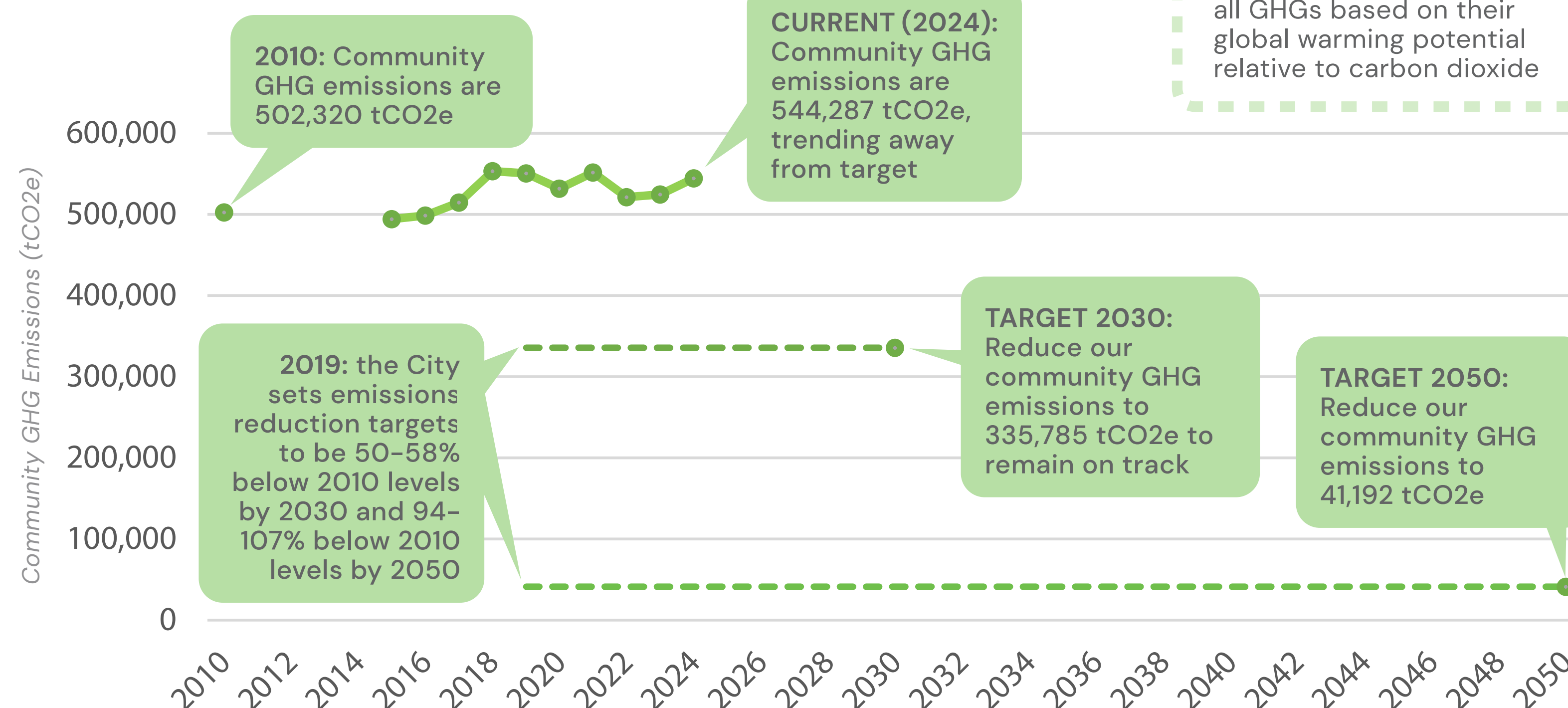
This is the standard unit  
used to measure and  
compare the impact of  
all GHGs based on their  
global warming potential  
relative to carbon dioxide

**WHY?**  
Do our part in limiting  
global warming and  
avoiding catastrophic  
climate change

**HOW?**  
Annual community  
emissions inventory  
from the Regional  
District of Nanaimo

**END GOAL**  
Community GHG  
emissions at least  
**94% below 2010**  
levels by 2050

#### WHAT ARE WE SEEING SO FAR?



## SUPPORTIVE INDICATORS

Community  
GHG emissions  
(tCO<sub>2</sub>e)

**544,287**  
in 2024

UP from  
524,251 in  
2023

GHG  
emissions  
from buildings and  
infrastructure (tCO<sub>2</sub>e)

**135,971**  
in 2024

UP from  
123,865 in  
2023

GHG  
emissions  
from transportation  
(tCO<sub>2</sub>e)

**325,113**  
in 2024

UP from  
320,730 in  
2023

GHG  
emissions per  
capita  
(tCO<sub>2</sub>e/person)

**4.9**  
in 2024

UP from  
4.8 in  
2023

Corporate  
GHG emissions  
(tCO<sub>2</sub>e)

**5,165**  
in 2024

DOWN from  
5,287 in  
2023

## TAKING ACTION: WHAT ARE WE DOING?

- ▶ Include low emission and energy efficient technologies in City-owned buildings
- ▶ Require new buildings to meet the top step of the Zero Carbon Step Code, six years in advance of Province-wide implementation
- ▶ Support residents in switching their existing home's heating system from fossil fuels to energy efficient electric heat pumps through financing, rebates, and a home retrofit support program
- ▶ Conduct a City fleet electrification study
- ▶ Development permit guidelines have been updated to include energy, climate, and water efficiency from a site and building design perspective
- ▶ Require electric vehicle charging infrastructure in all new residential (and most commercial) buildings and provide rebates to homeowners, apartment owners, and strata corporations for installing electric vehicle chargers
- ▶ Develop strategies to respond to climate change impacts such as sea level rise, wildfire, and extreme heat

### ACTIONS AT WORK: P.A.C.E FINANCING PROGRAM

The Nanaimo Property Assessed Clean Energy (PACE) Home Energy Retrofit Financing program provides interest free loans to help homeowners complete energy-saving upgrades, supporting progress towards emission reductions targets.







# A GREEN NANAIMO: RESILIENT & REGENERATIVE ECOSYSTEMS LAND USE & LAND HEALTH

## KEEPING WATCH: WHAT ARE WE MONITORING?



### KEY INDICATOR #2: TREE CANOPY COVERAGE – AREAS WITH SUFFICIENT TREE CANOPY

2022  
SUSTAINABILITY  
SCORE  
**37%**

#### WHY?

Use lands wisely and support the wellbeing of all living beings

#### HOW?

GIS high resolution imagery and remote sensing information

#### END GOAL

Every monitoring area has at least a 30% tree canopy coverage

### SUPPORTIVE INDICATORS

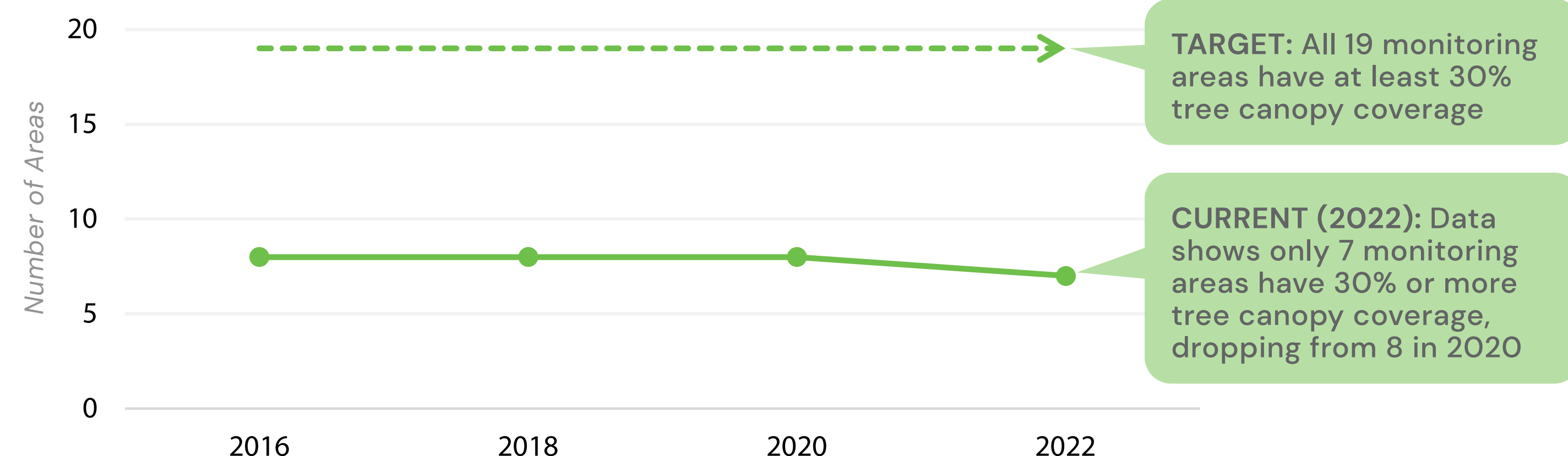
City-wide tree canopy coverage (including Saysutshun)

**33%**

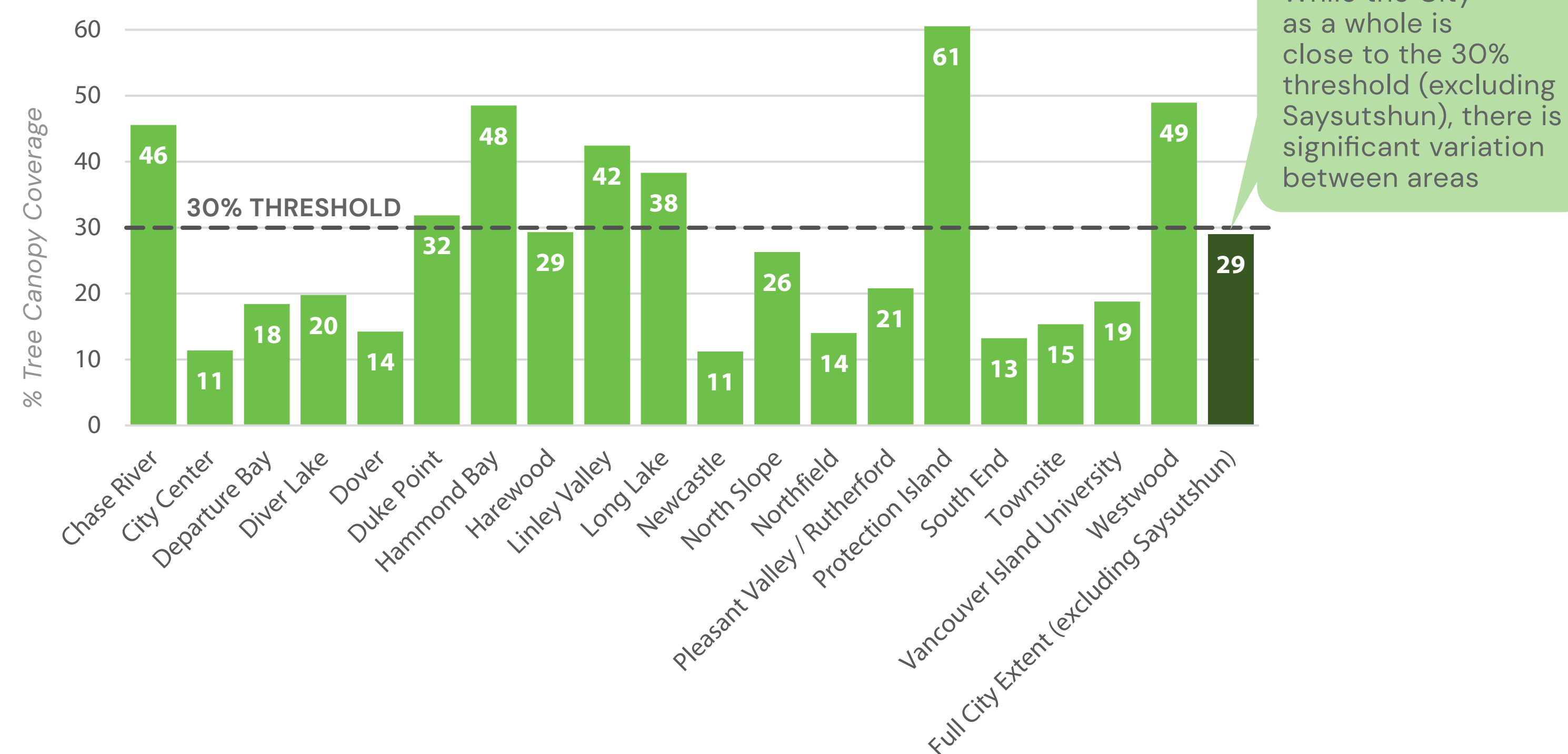
percent of land area

DOWN  
from 34%  
in 2022

#### WHAT ARE WE SEEING SO FAR?



#### WHAT AREAS ARE/ARE NOT MEETING THE 30% THRESHOLD?



## TAKING ACTION: WHAT ARE WE DOING?

- **Conduct an inventory and valuation of the City's natural assets** (e.g., creeks/streams, wetlands, forests) and incorporate these into the asset management program to protect and maintain their function
- **Continue the Tree Voucher program** with periodic reviews and adjustments to reflect current costs, uptake, and best practices
- **Support and facilitate stewardship volunteers and organizations** to restore and improve natural park assets
- **Prepare a Brownfield Strategy** to identify programs and actions to facilitate brownfield redevelopment, including financial and non-financial incentives

### USING COMPUTER VISION TO MEASURE TREE CANOPY COVERAGE

Traditionally, assessing tree canopy coverage took a lot of time. Emerging AI is making it easier to map, track, and assess tree canopy changes. Every 2 years, the City will use these tools to see assess changes in our tree canopy.







# A GREEN NANAIMO: RESILIENT & REGENERATIVE ECOSYSTEMS WATERWAY HEALTH / WASTE

Annual household waste sent to landfill

**229**  
kg / household

UP from 220 kg in 2022

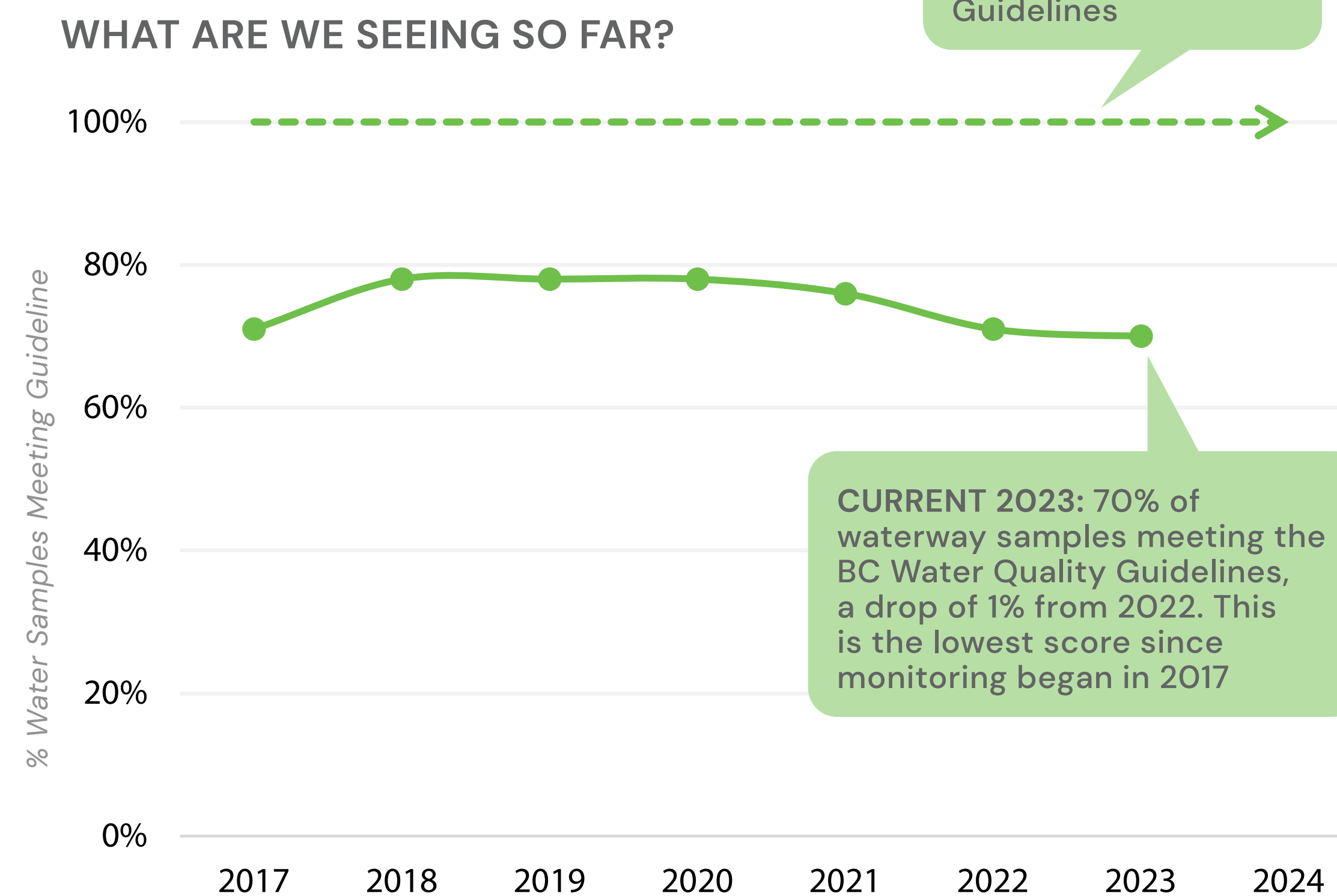
## KEEPING WATCH: WHAT ARE WE MONITORING?



### KEY INDICATOR #3: FRESH WATER QUALITY

2023  
SUSTAINABILITY  
SCORE  
**70%**

TARGET: 100% of waterways selected for monitoring meet the BC Water Quality Guidelines



#### WHY?

Protect the region's water resources and support informed decisions

#### HOW?

Water samples are collected and analyzed through the RDN's Drinking Water and Watershed Program annually

#### END GOAL

100% of water samples meet the BC Water Quality Guidelines



### KEY INDICATOR #8: MUNICIPAL RESIDENTIAL WASTE DIVERSION

2024  
SUSTAINABILITY  
SCORE  
**78%**

### SUPPORTIVE INDICATOR

#### WHY?

To support the regional goal of 90% municipal waste reduction by 2029

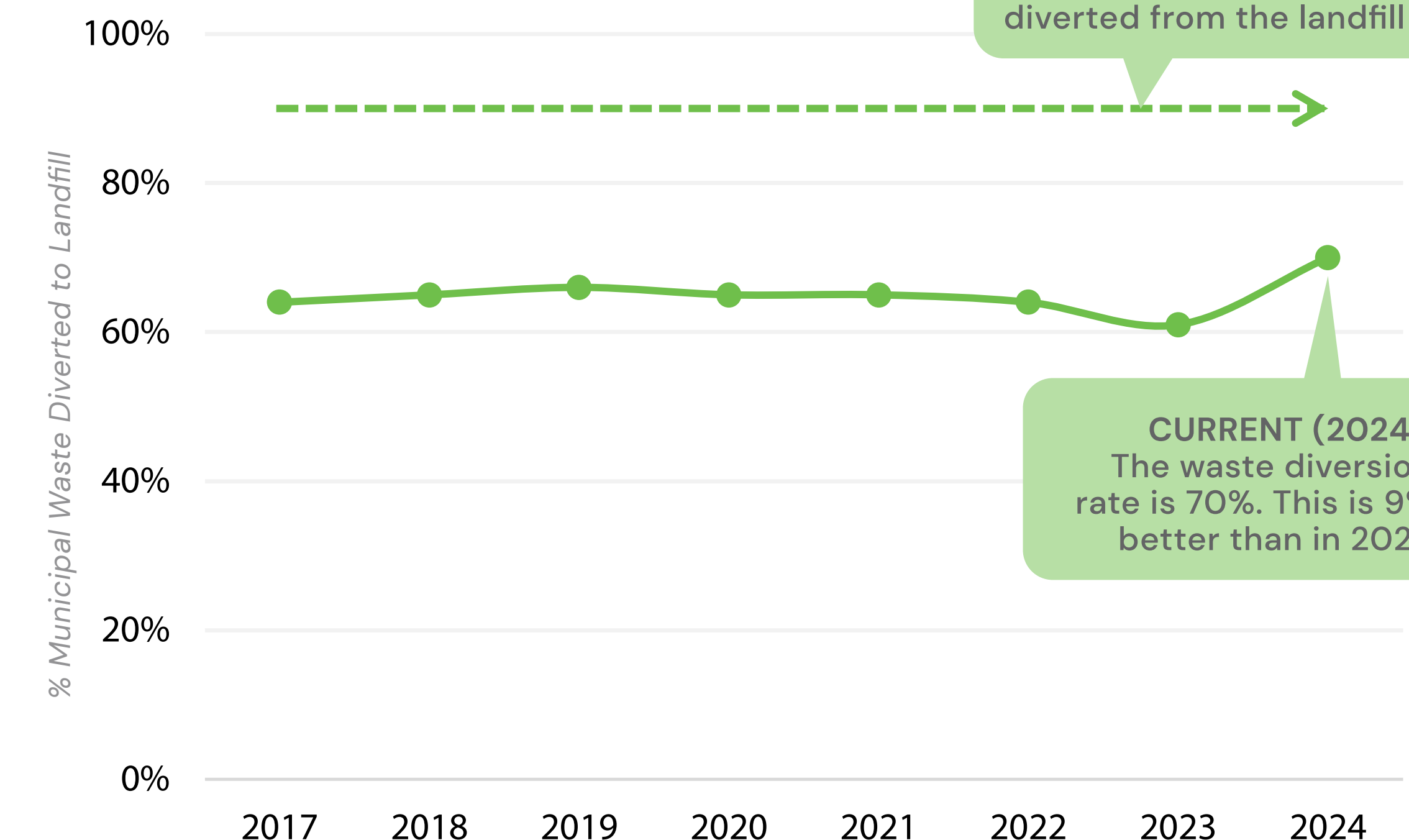
#### HOW?

Monitor the residential waste diversion rate per year and divide the score by 90%

#### END GOAL

Achieve municipal residential waste diversion rates at or above 90%

#### WHAT ARE WE SEEING SO FAR?



## TAKING ACTION: WHAT ARE WE DOING?

- ▶ Continue to support the Regional District of Nanaimo's Drinking Water and Watershed Protection Technical Advisory Committee
- ▶ Continue grant programs such as the Community Watershed Restoration Grant, to support community watershed restoration and enhancement programs
- ▶ Apply the most current erosion control standards for all City capital projects and approved utilities, works within statutory and road rights-of-way, and works taken over by the City related to private development
- ▶ Working with organizations like the Circular Cities and Regions Initiative and the Carbon Disclosure Project to promote circular economy activities related to reuse, repair, shared, and recycled content
- ▶ Continuing Zero Waste education campaigns such as Waste Reduction Week, Single-Use Item Reduction, and Green Giving
- ▶ Expanding City events such as Reuse Rendezvous and Trunk Sale to promote Zero Waste
- ▶ Developing Zero Waste public events as part of a waste reduction effort and experiential community education program





# A GREEN NANAIMO: RESILIENT & REGENERATIVE ECOSYSTEMS WATER RESOURCES

## KEEPING WATCH: WHAT ARE WE MONITORING?



### KEY INDICATOR #6: SUFFICIENCY OF RESERVOIR SUPPLY

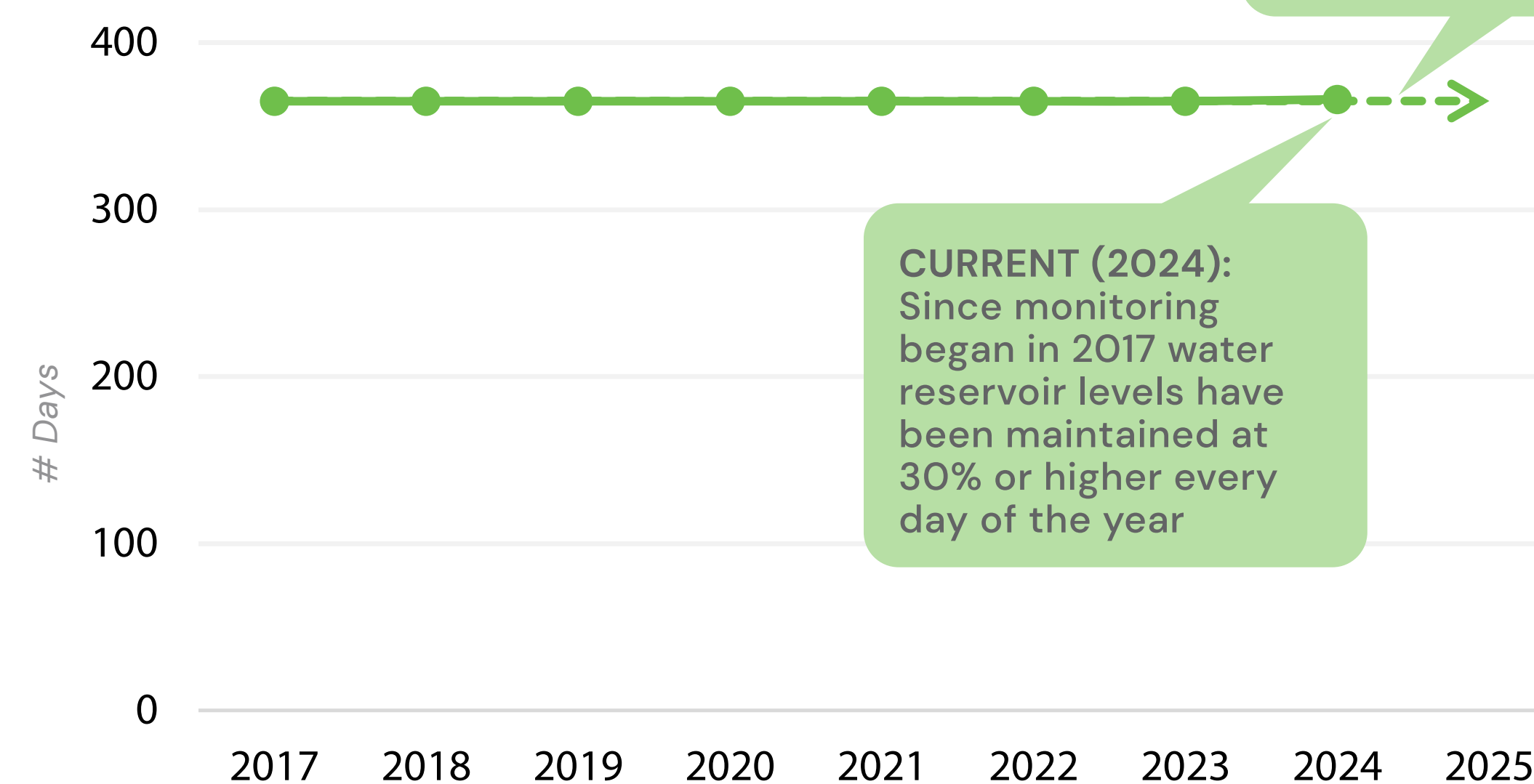
2024  
SUSTAINABILITY  
SCORE  
**100%**

**WHY?**  
Ensure there is enough drinking water to sustain our community

**HOW?**  
Record each day's water capacity and confirm it is over the 30% threshold

**END GOAL**  
Water level at Jump Lake is maintained at minimum 30% 365 days per year

#### WHAT ARE WE SEEING SO FAR?



**TARGET:** Water reservoir level is at 30% or above 365 days per year

**CURRENT (2024):** Since monitoring began in 2017 water reservoir levels have been maintained at 30% or higher every day of the year

### SUPPORTIVE INDICATORS

Number of days Jump Lake water level is between 31% - 35%

**0**

days in 2024

DOWN from 9 days in 2022

Annual total water consumption

**13,178,785**  
cubic meters in 2024

DOWN from 13,656,315 m<sup>3</sup> in 2023

Average water consumption per person per day

**325**  
liters/person in 2024

DOWN from 346 liters in 2023

Residential water consumption per person

**179**  
liters/person in 2024

DOWN from 190 liters in 2023

Monitoring watches for days the reservoir dips to 31% to 35% capacity which can then trigger actions to keep it above the 30% threshold



### KEY INDICATOR #7: ENVIRONMENTAL FLOW

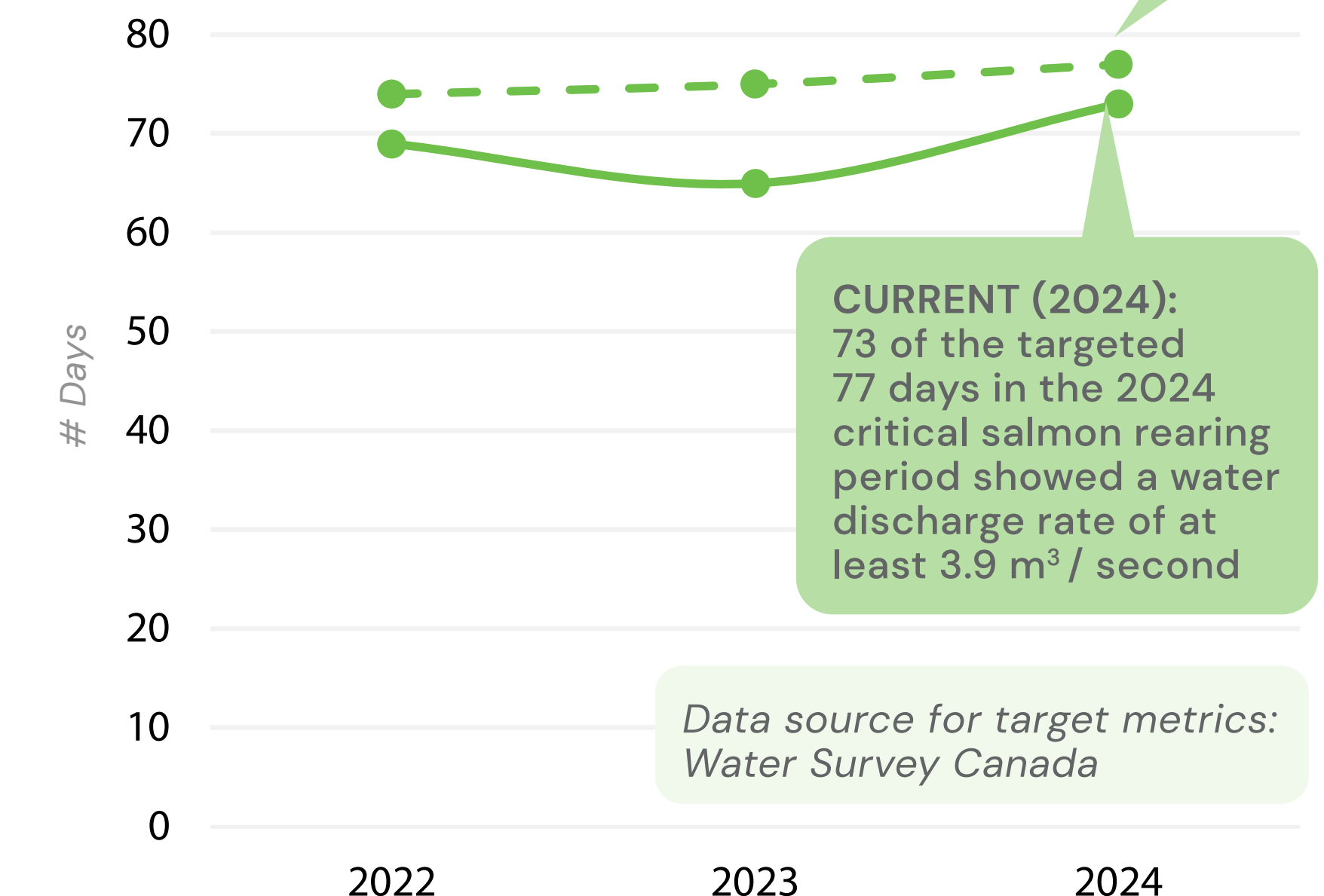
2024  
SUSTAINABILITY  
SCORE  
**95%**

**WHY?**  
To support salmon rearing habitat in the Nanaimo River

**HOW?**  
City staff annually review Water Survey Canada's real time discharge data

**END GOAL**  
A water discharge rate of 3.9 m<sup>3</sup> / second for the target number of days in the monitoring window

#### WHAT ARE WE SEEING SO FAR?



**CURRENT (2024):** 73 of the targeted 77 days in the 2024 critical salmon rearing period showed a water discharge rate of at least 3.9 m<sup>3</sup> / second

Data source for target metrics: Water Survey Canada

**TARGET:** Number of days in the critical salmon rearing period (third Friday of August to October 31) that should have a water discharge rate at or above 3.9 m<sup>3</sup> / second

## TAKING ACTION: WHAT ARE WE DOING?

- ▶ **Implementing the Water Supply Strategy** which uses current climate science to estimate water supply storage and distribution infrastructure needed to meet future growth
- ▶ **Supporting the Regional District of Nanaimo's Drinking Water and Watershed Protection Technical Advisory Committee**
- ▶ **Continuing the City's Water Saving Rebate Programs** to further reduce water consumption
- ▶ **Conducting an inventory and valuation of the City's natural assets** (creeks/streams, wetlands, forests) and incorporating these into the asset management program
- ▶ **Reviewing and prioritizing Southtown water supply bottleneck**
- ▶ **Constructing new reservoirs at Langara Drive and Vanderneuk Road** to support future growth and resilience





# A HEALTHY NANAIMO: COMMUNITY WELLBEING & LIVABILITY INDICATORS AT-A-GLANCE



## WHAT DOES CITY PLAN SAY?

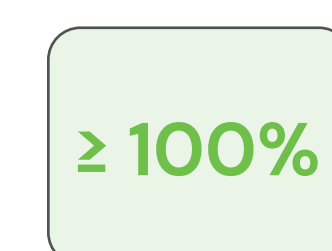
**A Healthy Nanaimo** is about both the wellbeing of all our residents and the livability of our city. A healthy city means that all people have the opportunity to access and maintain a high standard of living – regardless of their life stage, family composition, abilities, or socio-economic status. Nanaimo envisions a city where a person can live an entire lifetime, finding comfort and happiness in a safe and secure community with access to affordable housing, recreation, culture, and wellness services, healthy food, parks, nature, and education. A Healthy Nanaimo is where people are securely housed, fed, and cared for. It is a city where we can all thrive.

## HEALTHY INDICATORS

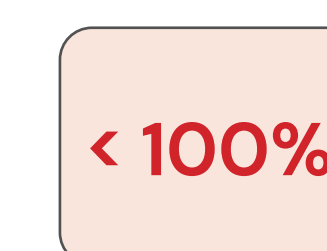
| TOPIC            | INDICATORS   | SUSTAINABILITY SCORE |              |              |
|------------------|--|----------------------|--------------|--------------|
|                  |  | 2022                 | 2023         | 2024         |
| Community Safety | KEY INDICATORS   |                      |              |              |
|                  | Real Crime   | 54%                  | 60%          | 56%          |
|                  | UNDER DEVELOPMENT: Perception of Safety  | not analyzed         | not analyzed | not analyzed |
|                  | SUPPORTIVE INDICATORS  |                      |              |              |
|                  | ► Non-domestic assaults<br>► Break & enter – business<br>► Break & enter – residential |                      |              |              |

| TOPIC                                  | INDICATORS   | SUSTAINABILITY SCORE             |      |      |
|--|--|----------------------------------|------|------|
|  |  | 2022                             | 2023 | 2024 |
| Housing                                | KEY INDICATORS   |                                  |      |      |
|  | Housing Affordability  | 76% last measured in 2021 Census |      |      |
|  | Vacancy Rate   | 73%                              | 90%  | 97%  |
|  | SUPPORTIVE INDICATORS  |                                  |      |      |
|  | ► Total new residential units (building permits issued based on calendar year)<br>► Total net new non-market units including supportive units (BC Housing unit count)<br>► Number of new residential units – studio, 1 bedroom, 2 bedroom, 3 bedroom (building permits issued)<br>► Average units per hectare (UPH) by land use designation – Primary Urban Centre |                                  |      |      |
| Homeless-ness                          | KEY INDICATOR  |                                  |      |      |
|  | Homelessness – Temporary Relief  | not analyzed                     | 44%  | 32%  |
|  | SUPPORTIVE INDICATORS  |                                  |      |      |
|  | ► Homelessness – Point-in-Time Count<br>► Number of year-round shelter beds<br>► Number of temporary supportive housing units  |                                  |      |      |
| Food Security                          | UNDER DEVELOPMENT: Indicators to be Identified   |                                  |      |      |
| Recreation, Culture & Wellness Support | UNDER DEVELOPMENT: Key Indicator(s) to be Identified   |                                  |      |      |
|  | SUPPORTIVE INDICATOR   |                                  |      |      |
|  | ► Number of individual households participating in Park, Rec & Culture programs  |                                  |      |      |

## WHAT DO SUSTAINABILITY SCORE PERCENTAGES MEAN?



We are meeting our Goal and operating sustainably



We are not yet meeting our Goal. The closer the number is to 100%, the closer we are to the Goal

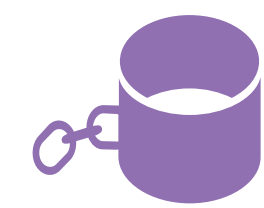
**REMEMBER:** Goals are what we work towards. They are aspirational. It is okay if we're not meeting them yet. As we complete actions, we hope to see the Key Indicators moving closer towards the 100% threshold that shows we are achieving our Goal.





# A HEALTHY NANAIMO: COMMUNITY WELLBEING & LIVABILITY COMMUNITY SAFETY

## KEEPING WATCH: WHAT ARE WE MONITORING?



### KEY INDICATOR #12: REAL CRIME

2024  
SUSTAINABILITY  
SCORE  
**56%**

#### WHY?

So everyone feels safe in our community

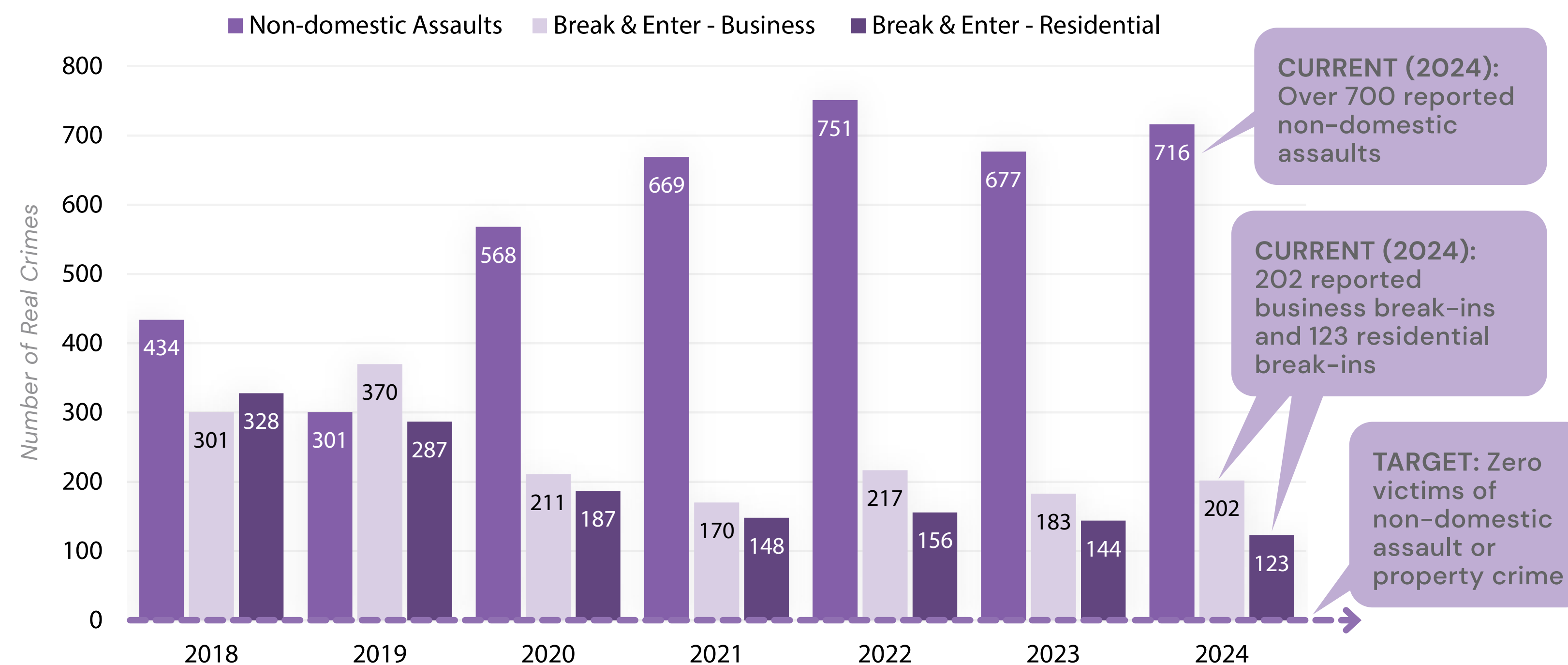
#### HOW?

Nanaimo RCMP Detachment collects annual crime data within the city

#### END GOAL

Zero victims of non-domestic assault and property crime in Nanaimo

### WHAT ARE WE SEEING SO FAR?



### KEY INDICATOR #13: PERCEPTION OF SAFETY (IN DEVELOPMENT)

**HOW?** This metric would measure how safe residents feel walking alone in the area they live after dark. A method being considered is a statistically-valid survey every 2-3 years

**END GOAL:** 100% of the population feels safe walking alone

## TAKING ACTION: WHAT ARE WE DOING?

- ▶ **Integrating compassionate care and accountability** by providing support services and enforcement work in tandem to address public disorder linked to vulnerable populations
- ▶ **Implementing a plan to target and engage youth at risk of participating in gun and gang violence** through the Nanaimo Youth Resilience Strategy
- ▶ **Constructing a new RCMP Detachment**
- ▶ **Supporting the Nanaimo Situation Table's work** to address the needs of high-risk individuals
- ▶ **Implementing the Downtown Nanaimo Community Safety Action Plan**
- ▶ **Conducting a Parking Facility Security Assessment in the Downtown** (Bastion, Vancouver Island Conference Centre, and Harbour Front parkades)

## SUPPORTIVE INDICATORS

Non-domestic assaults

**716**  
in 2024



UP from 677 in 2023

Break & enter - business

**202**  
in 2024



UP from 183 in 2023

Break & enter - residential

**123**  
in 2024



DOWN from 144 in 2023

### ACTIONS AT WORK: COMMUNITY SAFETY OFFICERS (CSO)

The Community Safety Officer Program was launched by the City in 2022 to provide municipal response support for issues including public disorder, overdose, addictions, and mental health challenges. This program provides on the ground resources and helps reduce call volume to fire, ambulance, police, and health care providers. The City is funding an additional 10 CSO positions in 2025 and 2026.



Image Credit: Ian Holmes





# A HEALTHY NANAIMO: COMMUNITY WELLBEING & LIVABILITY HOUSING



## KEEPING WATCH: WHAT ARE WE MONITORING?



### KEY INDICATOR #14: HOUSING AFFORDABILITY

2021  
SUSTAINABILITY  
SCORE  
**76%**

#### WHY?

So all residents of Nanaimo have access to housing that is safe and affordable

#### HOW?

Housing affordability data from Statistics Canada (collected every 5 years)

#### END GOAL

All residents spend <30% of their gross income on housing



### KEY INDICATOR #15: VACANCY RATE

2024  
SUSTAINABILITY  
SCORE  
**97%**

#### WHY?

So there are sufficient rental units for those who need them

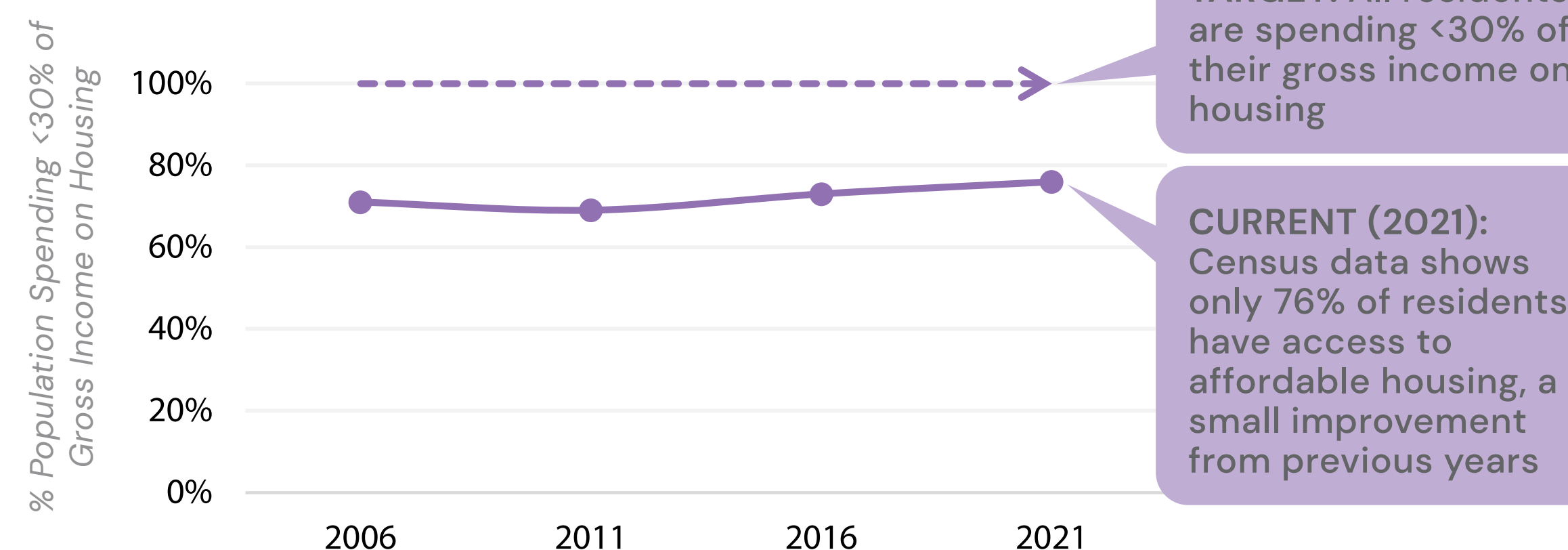
#### HOW?

Annual rental vacancy rates from the Canadian Mortgage and Housing Corporation

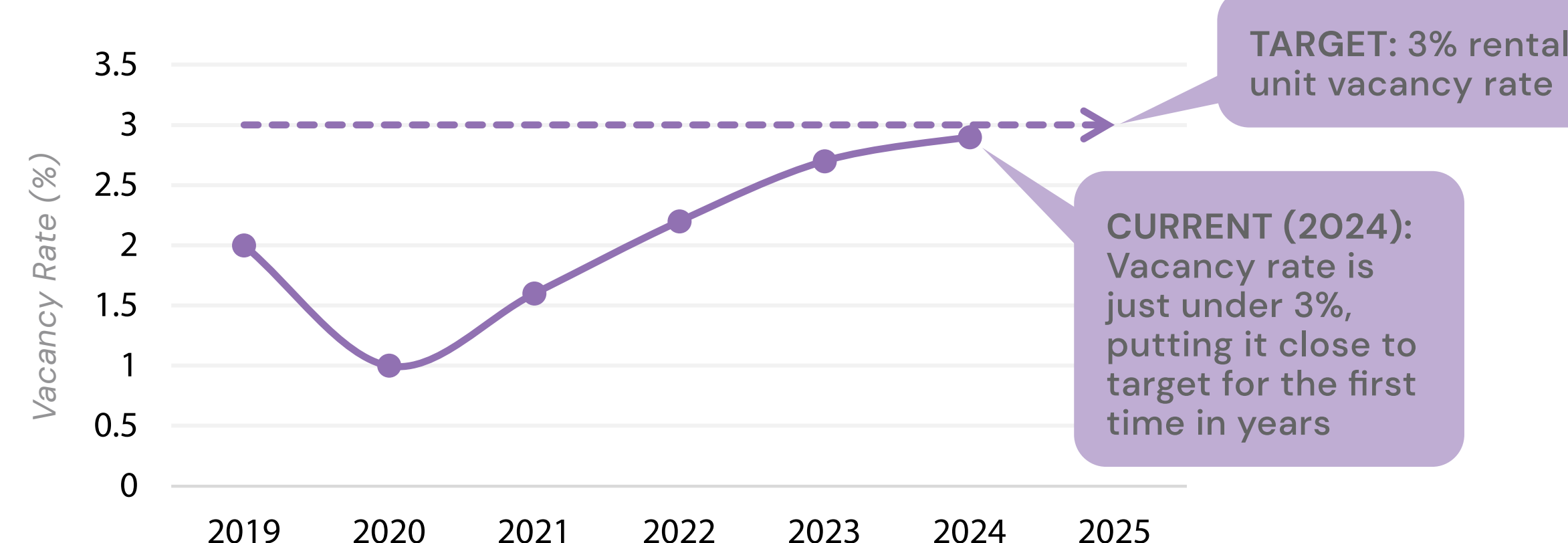
#### END GOAL

Maintain 3% or greater rental vacancy rate

#### WHAT ARE WE SEEING SO FAR?



#### WHAT ARE WE SEEING SO FAR?



## TAKING ACTION: WHAT ARE WE DOING?

- **Updating the Zoning Bylaw** to support more housing opportunities
- **Identifying appropriate parcels to pre-zone for affordable housing** in Urban Centres and Corridor land use designations
- **Streamlining building permit approvals**
- **Creating a tenant relocation policy** to support tenants impacted by redevelopment and displacement
- **Creating an Area Plan for the Woodgrove Urban Centre** to support more housing
- **Identifying sites for acquisition and potential partnerships for affordable and supportive housing**

## SUPPORTIVE INDICATORS

Total new residential units (building permits issued)

**431**

units in 2024

BELOW Provincial housing target of 783

Total net new non-market units (incl. affordable housing)

**28**

units in 2024

Provincial target of 1,929 for new non-market units by 2029

Number of new residential units - studio

**60**

building permits in 2024

Provincial target of 3,124 for studio/1-br units combined by 2029

Number of new residential units - 1 bedroom

**127**

building permits in 2024

Provincial target of 3,124 studio/1-br units combined by 2029

Number of new residential units - 2 bedroom

**151**

building permits in 2024

Provincial target of 772 2-bedroom units by 2029

Number of new residential units - 3 bedroom

**93**

building permits in 2024

Provincial target of 806 3-bedroom units by 2029

The supportive indicators provide a snapshot of the progress being made towards Provincial housing targets

Average UPH by land use designation - Primary Urban Centre

**55**

average UPH

BELOW target of 250 UPH for land use





# A HEALTHY NANAIMO: COMMUNITY WELLBEING & LIVABILITY HOMELESSNESS

## KEEPING WATCH: WHAT ARE WE MONITORING?



### KEY INDICATOR #16: HOMELESSNESS – TEMPORARY RELIEF

2024  
SUSTAINABILITY  
SCORE  
**32%**

#### WHY?

So all unsheltered people having access to housing

#### HOW?

Information from service providers on beds available compared with Point-in-Time Count data

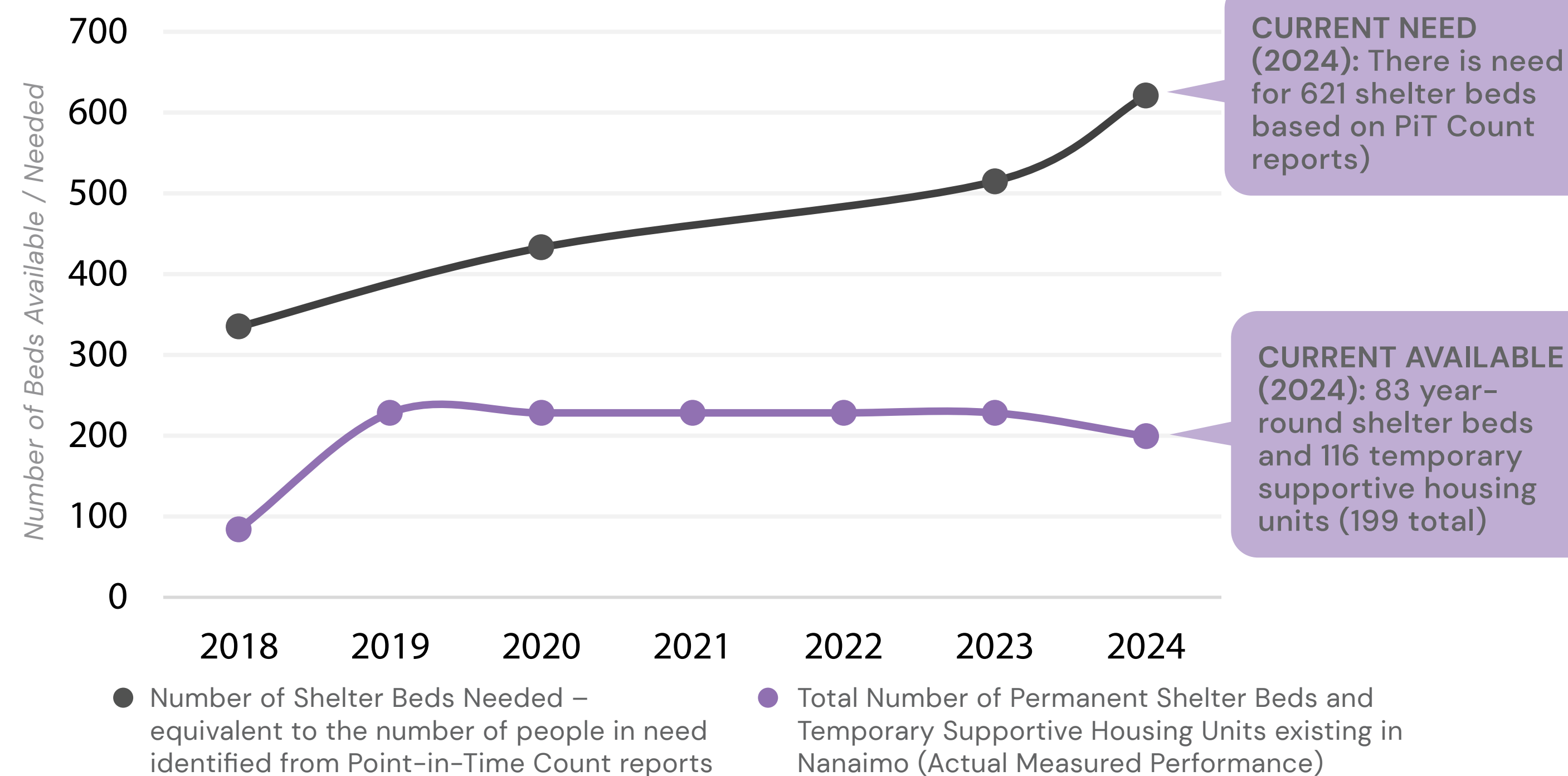
#### END GOAL

Solve homelessness

#### INTERIM GOAL

Number of people experiencing homelessness does not exceed beds available

### WHAT ARE WE SEEING SO FAR?



## TAKING ACTION: WHAT ARE WE DOING?

- ▶ **Advancing systems-level planning through the Alignment Project** to address and prevent homelessness through collaboration with Federal, Provincial, Snuneymuxw First Nation governments, and community partners
- ▶ **Preventing homelessness by funding the Rent Supplement Program and the Nanaimo Region Rent Bank** using Online Accommodation Platform revenue
- ▶ **Partnering with BC Housing to deliver temporary supportive housing units** as a pathway to permanent, stable housing
- ▶ **Expanding basic needs and shelter services** at the Hub, through Federal and Provincial Government funding partnerships



## SUPPORTIVE INDICATORS

Homelessness Point-in-Time Count

**621**

people in 2024

UP from 515 in 2023  
PIT Count

Number of Year-Round Shelter Beds\*

**83**

beds in 2024

DOWN from 84 in 2023

Number of Temporary Supportive Housing Units\*

**116**

units in 2024

DOWN from 144 in 2023

The Point-in-Time Count reflects an approximation of people experiencing homelessness while the combined number of year-round shelter beds and temporary supportive housing units reflect the number of places for those experiencing homelessness to stay

#### \*DEFINITIONS:

**Shelter Beds:** Shelter beds are short term, shared accommodations that provide immediate overnight relief for individuals experiencing homelessness. Typically available on a drop-in basis and not assigned to specific individuals.

**Temporary Supportive Housing:** Temporary Supportive Housing Units are private, short-term housing designed to stabilize individuals and often include supportive services.

**Note:** Both shelter beds and temporary supportive housing units serve individuals experiencing homelessness, but they differ in duration, level of support, and personal assignment.

## Recreation, Culture & Wellness Support

Key indicator identification is underway

Number of households participating in Parks, Rec & Culture programs

**9,284**

households in 2024

UP from 8,257 in 2023

This supportive indicator shows the overall community use of the City's Parks, Recreation, and Culture programs and services





# A PROSPEROUS NANAIMO: THRIVING & RESILIENT ECONOMY INDICATORS AT-A-GLANCE



## WHAT DOES CITY PLAN SAY?

A Prosperous Nanaimo is about leveraging the City’s strategic assets, growing a sustainable economy, and enhancing the exceptional quality of life by providing leadership, a culture of collaboration, and resources for growing investment and innovative practices in community development. Enabling homegrown ideas, talent, and enterprises, while welcoming new people and energy from around the world, will advance our city’s prosperity. It involves harnessing our unique assets, generating interest and investment, and building upon what makes our city special. A Prosperous Nanaimo is known as a great place to live, to work, to invest, and to experience.



## PROSPEROUS INDICATORS

| TOPIC      | INDICATORS                     | SUSTAINABILITY SCORE |      |      |
|------------|--------------------------------|----------------------|------|------|
|            |                                | 2022                 | 2023 | 2024 |
| Workforce  | KEY INDICATOR                  |                      |      |      |
|            | Workforce Sufficiency          | 93%                  | 94%  | 94%  |
|            | SUPPORTIVE INDICATORS          |                      |      |      |
|            | ► Nanaimo workforce percentage |                      |      |      |
| Employment | KEY INDICATOR                  |                      |      |      |
|            | Labour Market Performance      | 125%                 | 94%  | 96%  |
|            | SUPPORTIVE INDICATOR           |                      |      |      |
|            | ► Unemployment rate            |                      |      |      |

## WHAT DO SUSTAINABILITY SCORE PERCENTAGES MEAN?

≥ 100%

We are meeting our Goal and operating sustainably

< 100%

We are not yet meeting our Goal. The closer the number is to 100%, the closer we are to the Goal

**REMEMBER:** Goals are what we work towards. They are aspirational. It is okay if we’re not meeting them yet. As we complete actions, we hope to see the Key Indicators moving closer towards the 100% threshold that shows we are achieving our Goal.





# A PROSPEROUS NANAIMO: THRIVING & RESILIENT ECONOMY WORKFORCE & EMPLOYMENT

## KEEPING WATCH: WHAT ARE WE MONITORING?



### KEY INDICATOR #22: WORKFORCE SUFFICIENCY

2024  
SUSTAINABILITY  
SCORE  
**94%**

#### WHY?

Meet community needs and ensure our economy is thriving

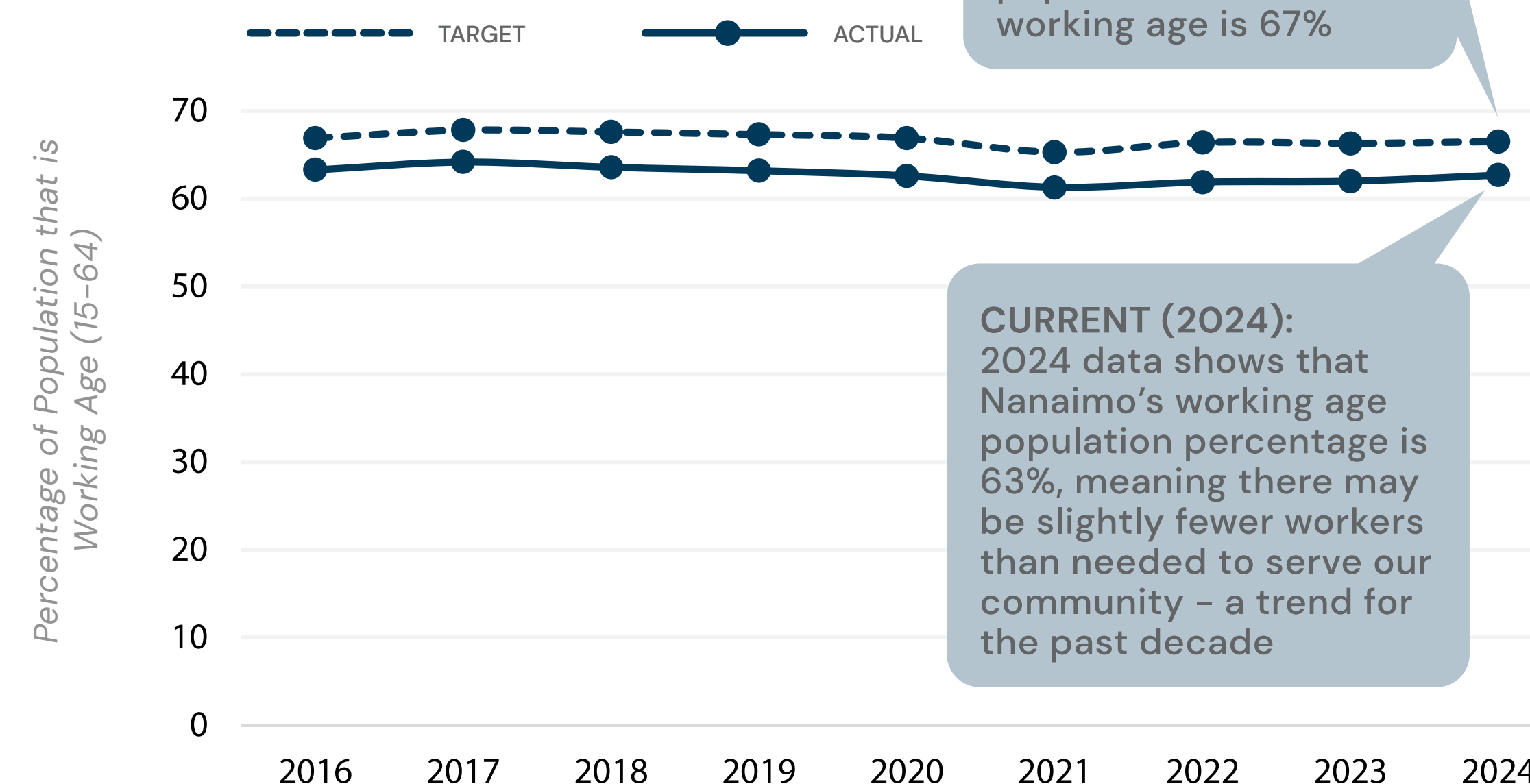
#### HOW?

Workforce population data collected by Statistics Canada (5 years) and Environmental Systems Research Institute (between years)

#### END GOAL

Enough workers to meet community needs

#### WHAT ARE WE SEEING SO FAR?



### KEY INDICATOR #23: LABOUR MARKET PERFORMANCE

2024  
SUSTAINABILITY  
SCORE  
**96%**

#### WHY?

To allow people seeking work to find it

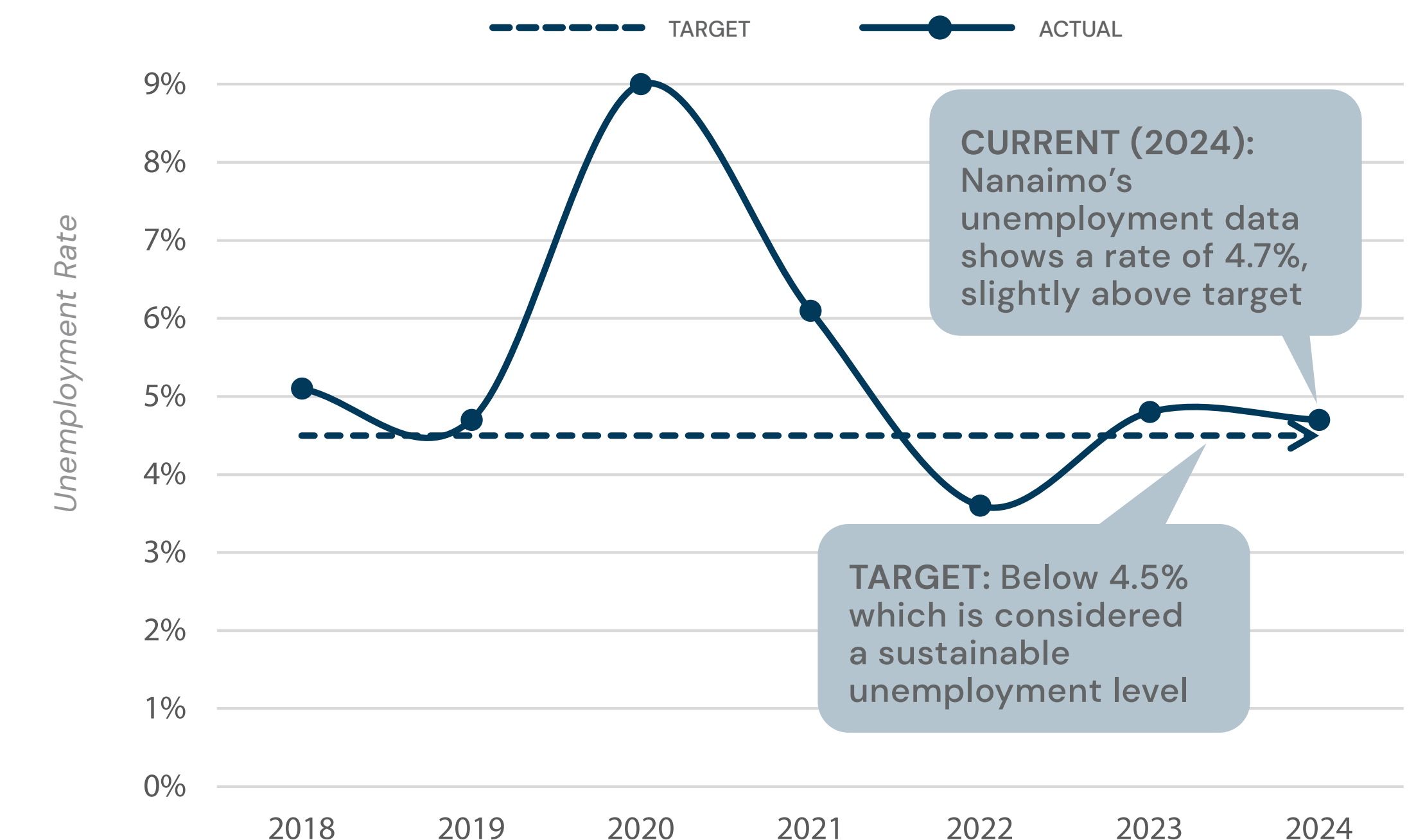
#### HOW?

Annual unemployment rates from Statistics Canada

#### END GOAL

Vast majority of those interested in being employed are able to find work in a reasonable time (4.5% unemployment rate)

#### WHAT ARE WE SEEING SO FAR?



## SUPPORTIVE INDICATORS

Nanaimo workforce percentage

**63%**  
in 2024

UP from 62% in 2023

Unemployment rate

**4.7%**  
in 2024

DOWN from 4.8% in 2023

## TAKING ACTION: WHAT ARE WE DOING?

- ▶ **Developing the Circular Economy Accelerator Program** to support businesses in adopting circular principles to reduce waste and emissions and develop innovative practices while increasing revenue and reducing operational costs
- ▶ **Conducting a comprehensive analysis of the non-profit sector's economic, social, and environmental impacts**, with strategies to strengthen and sustain non-profit organizations
- ▶ **Developing a step-by-step guide for starting a business in Nanaimo** and connect new entrepreneurs and existing businesses to relevant local, regional, provincial, and federal resources
- ▶ **Introducing tax exemption programs** to stimulate investment in the Downtown and increase tourism accommodation offerings
- ▶ **Developing a Friendship City Policy and Program** to enhance trade, tourism, investment, educational, and cultural exchange with international cities
- ▶ **Producing timely and relevant research and custom data products** providing insights that inform strategic planning, communications, investment decisions, and partnership development in the community
- ▶ **Advocating for expanded health care services and improved facilities at Nanaimo Regional General Hospital**