

July 8, 2025

RE: UPDATED MANHOLE COVERS

Please be advised that effective September 1, 2025, all manhole covers installed or replaced within the City of Nanaimo must conform to the updated manhole cover designs attached:

- **Sanitary** – Snuneymuxw Frog by Joel Good (MoESS Dwg No. S-9, Rev Date May 2025)
- **Storm** – Snuneymuxw Eagle by Joel Good (MoESS Dwg No. SW-16, Rev Date May 2025)
- **Water** – Snuneymuxw Orca by Joel Good (MoESS Dwg No. W-19, Rev Date May 2025)

These revisions will be included in the upcoming Edition 15 of the Manual of Engineering Standards and Specifications (MoESS).

Please ensure all design submissions, procurement, and construction activities reflect these changes. All non-compliant manhole covers installed on/after September 1, 2025, will not be accepted.

Should you have any questions or require clarification, please contact Public Works Department at public.worksinfo@nanaimo.ca, or 250-758-5222.



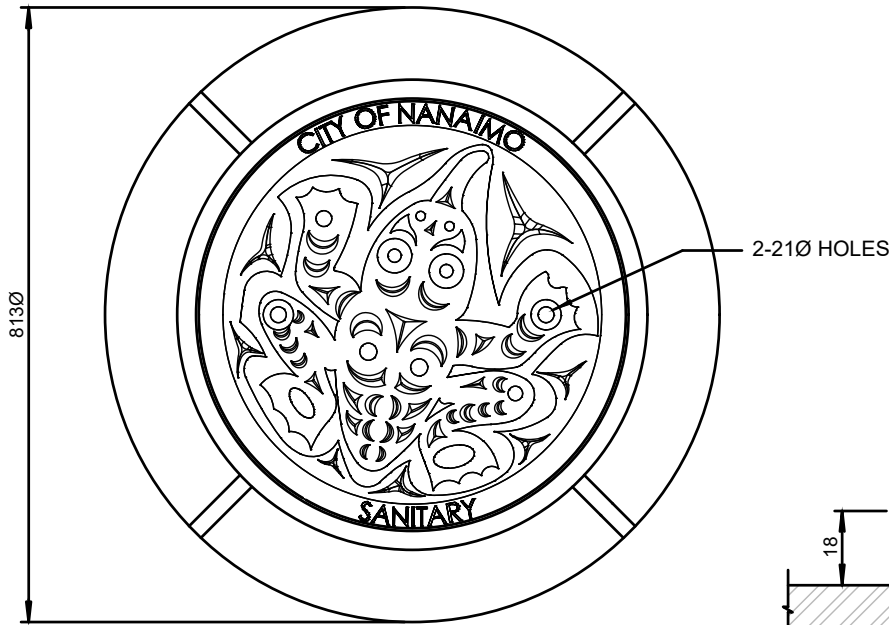
Kurtis Noble, A.Sc.T.
Project Manager
Engineering & Public Works Department

p.c.: J. Elliot, Director, Public Works
P. Rosen, Director, Engineering
P. Stewart, Manager, Engineering Projects
D. Myles, Manager, Utilities
B. Thomas, Manager, Dev. Engineering & Environment
D. Thompson, Manager, Roads
K. Andersen, Municipal Services Inspector

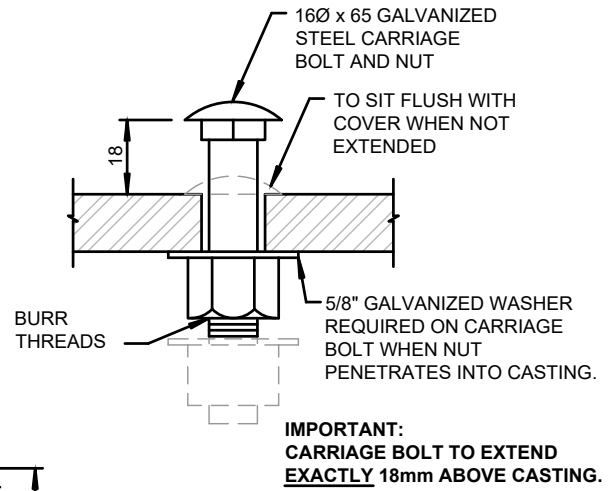
Attach: MoESS Dwg No. S-9, Rev Date May 2025, Sanitary Manhole Frame & Cover, Snuneymuxw Frog by Joel Good
MoESS Dwg No. SW-16, Rev Date May 2025, Storm Manhole Frame & Cover, Snuneymuxw Eagle by Joel Good
MoESS Dwg No. W-19, Rev Date May 2025, Water Manhole Cover & Frame, Snuneymuxw Orca by Joel Good

KN:*jw

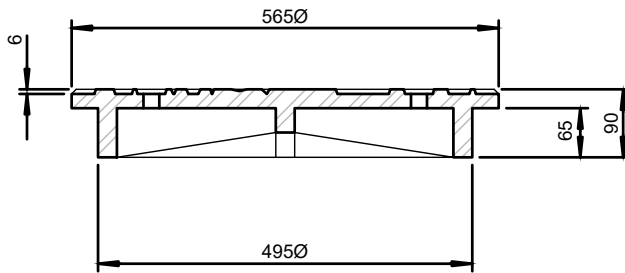
g: Administration/Standards&Specifications/2023INTERIMAMENDMENTSfornextrevision/ltr2025-JUL-08UpdatedManholeCovers-Snuneymuxw



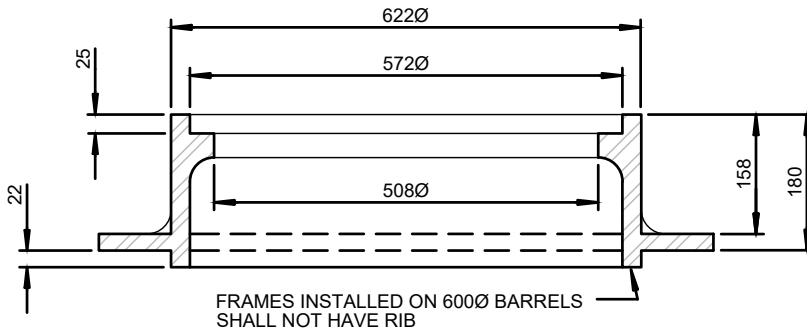
PLAN



CARRIAGE BOLT DETAIL



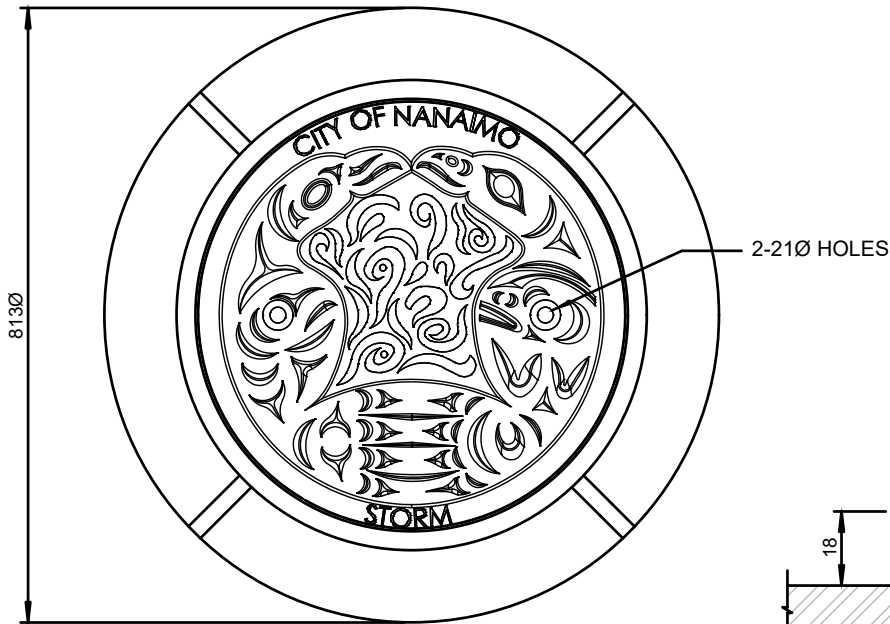
COVER



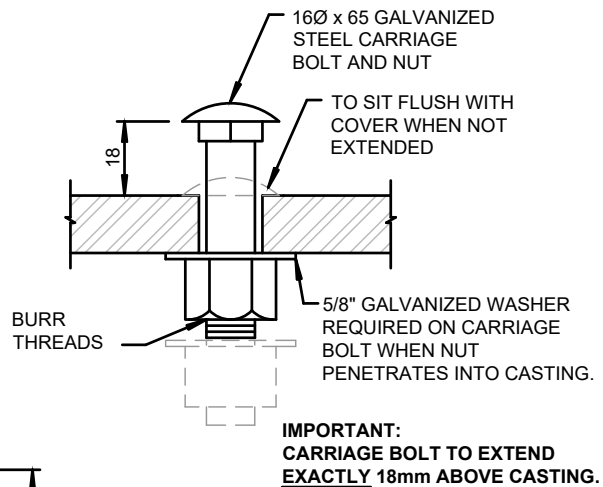
FRAME

NOTES:

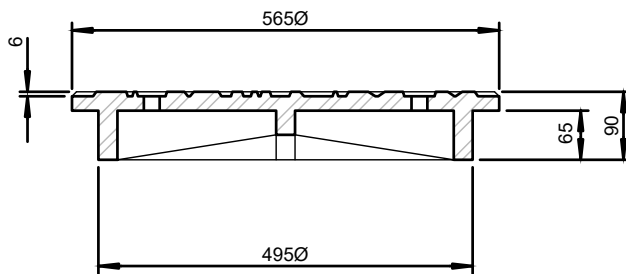
1. THIS DRAWING SHALL BE USED IN ACCORDANCE WITH SECTION 6.0 OF THE MANUAL OF ENGINEERING STANDARDS AND SPECIFICATIONS, LATEST EDITION.
2. CASTINGS SHALL BE CERTIFIED TO MEET CS-600 LOADING.
3. ALL BEARING SURFACES BETWEEN FRAME, COVER AND RISER RINGS SHALL BE MACHINED FOR NON-ROCKING FIT IN ALL POSITIONS. ALLOW 1.5mm RAISED FACE IN CASTINGS FOR MACHINING.
4. PAINT THE INSIDE SURFACE OF THE MANHOLE FRAME IN ACCORDANCE WITH THE MANUFACTURER'S SPECIFICATION WITH ENAMEL RUST PAINT. COLOUR TO BE YELLOW.
5. ONLY PRODUCTS LISTED IN THE CITY OF NANAIMO APPROVED PRODUCTS LIST WILL BE ACCEPTED FOR INSTALLATION.
6. ALL DIMENSIONS ARE MILLIMETRES UNLESS NOTED OTHERWISE.
7. REFERRING TO "CITY OF NANAIMO SANITARY", LETTERING SHALL BE 25 FLATTENED FACE GOTHIC WITH FACE OF LETTERS RAISED TO THE SAME LEVELS AS THE TOP OF THE RIBS.



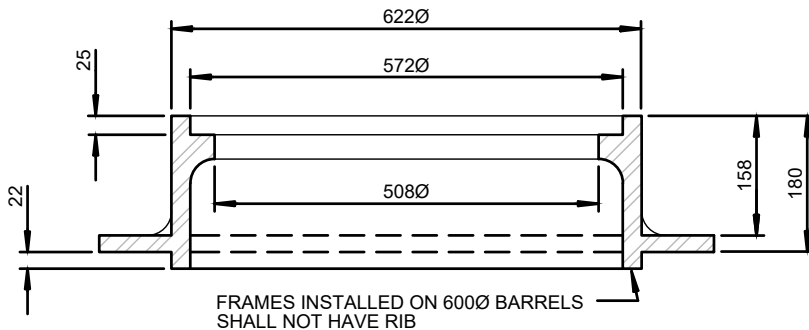
PLAN



CARRIAGE BOLT DETAIL



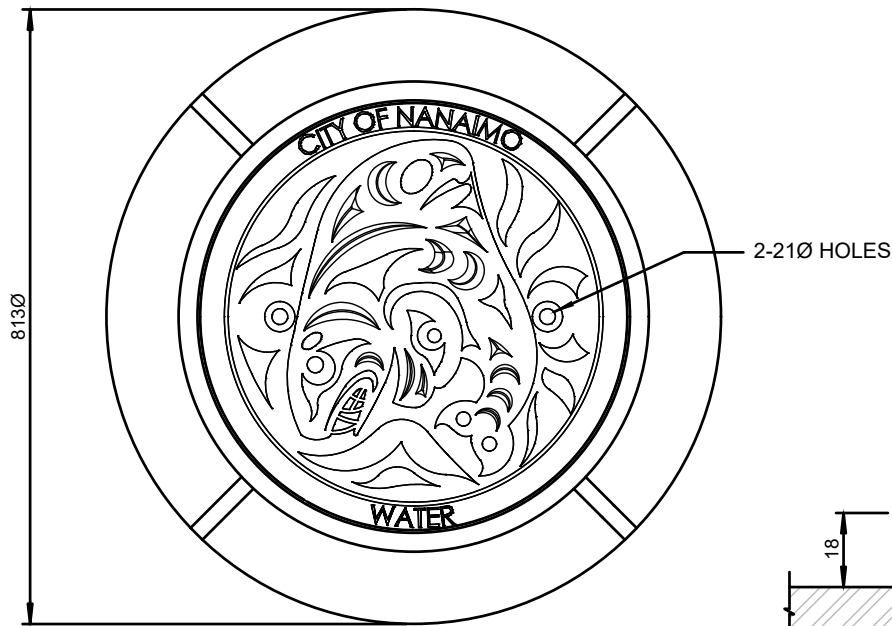
COVER



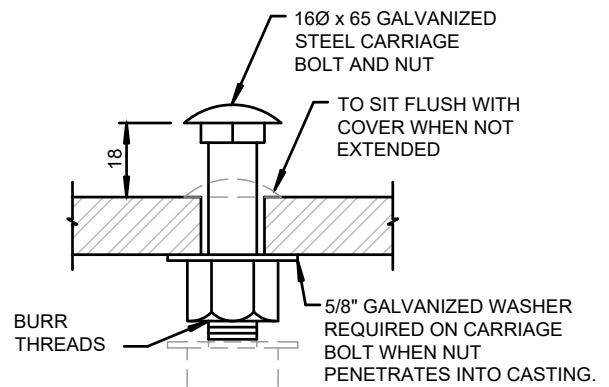
FRAME

NOTES:

1. THIS DRAWING SHALL BE USED IN ACCORDANCE WITH SECTION 7.0 OF THE MANUAL OF ENGINEERING STANDARDS AND SPECIFICATIONS, LATEST EDITION.
2. CASTINGS SHALL BE CERTIFIED CS-600 LOADING.
3. ALL BEARING SURFACES BETWEEN FRAME, COVER AND RISER RINGS SHALL BE MACHINED FOR NON-ROCKING FIT IN ALL POSITIONS. ALLOW 1.5mm RAISED FACE IN CASTINGS FOR MACHINING.
4. PAINT THE INSIDE SURFACE OF THE MANHOLE FRAME IN ACCORDANCE WITH THE MANUFACTURER'S SPECIFICATION WITH ENAMEL RUST PAINT. COLOUR TO BE GREEN.
5. ONLY PRODUCTS LISTED IN THE CITY OF NANAIMO APPROVED PRODUCTS WILL BE ACCEPTED FOR THIS INSTALLATION.
6. ALL DIMENSIONS ARE MILLIMETRES UNLESS NOTED OTHERWISE.
7. REFERRING TO "CITY OF NANAIMO STORM" LETTERING SHALL BE 25 FLATTENED FACE GOTHIC WITH FACE OF LETTERS RAISED TO THE SAME LEVELS AS THE TOP OF THE RIBS.

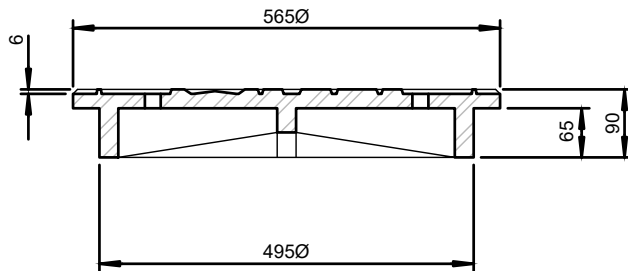


PLAN

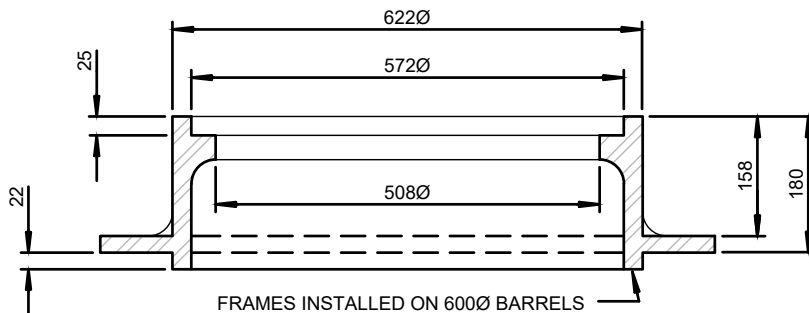


**IMPORTANT:
CARRIAGE BOLT TO EXTEND
EXACTLY 18mm ABOVE CASTING.**

CARRIAGE BOLT DETAIL



COVER



FRAME

NOTES:

1. THIS DRAWING SHALL BE USED IN ACCORDANCE WITH SECTION 5.0 OF THE MANUAL OF ENGINEERING STANDARDS AND SPECIFICATIONS, LATEST EDITION.
2. CASTINGS SHALL BE CERTIFIED TO MEET CS-600 LOADING.
3. ALL BEARING SURFACES BETWEEN FRAME, COVER AND RISER RINGS SHALL BE MACHINED FOR NON-ROCKING FIT IN ALL POSITIONS. ALLOW 1.5mm RAISED FACE IN CASTINGS FOR MACHINING.
4. ONLY PRODUCTS LISTED IN THE CITY OF NANAIMO APPROVED PRODUCTS LIST WILL BE ACCEPTED FOR INSTALLATION.
5. ALL DIMENSIONS ARE MILLIMETRES UNLESS NOTED OTHERWISE.
6. REFERRING TO "CITY OF NANAIMO WATER" LETTERING SHALL BE 25 FLATTENED FACE GOTHIC WITH FACE OF LETTERS RAISED TO THE SAME LEVELS AS THE TOP OF THE RIBS.