

NANAIMO WATERFRONT WALKWAY PROJECT

WELCOME!

Background

In December 2017, Nanaimo City Council endorsed a plan that outlines how the waterfront walkway can be upgraded and expanded from Departure Bay to the Nanaimo River Estuary.

Let's Get Started

The first two phases to come out of the implementation plan are:

1. Departure Bay

BC Ferries Departure Bay Ferry Terminal to Cilaire Neighbourhood

2. South Downtown Waterfront

BC Ferries Gabriola Ferry Terminal to Nanaimo Port Authority

Purpose of Today

We would like your comments on the draft designs shown here today before we finalize the plans.

**Your feedback is important so
we welcome your comments!**



How Do We Get There



SECTION 1

Departure Bay BC Ferries Terminal to Cilaire



Archaeological

Archaeologist has completed an assessment for project area with First Nations.

Low potential for archaeological impact because project is located within foreshore.

During construction, project will be monitored by an archaeologist to minimize any impacts.

Geotechnical

Slope reviewed, walkway has been placed away from the bluff in case of slope failure

Borehole drilling and soil testing has been completed to aid in foundation design.

Potential liquefiable natural soils in foreshore.

Various depths to bedrock or dense soils suitable to support piles.

Environmental

Project reduces impact on foreshore through use of piles rather than fill.

An Aquatic Effects and Serious Harm assessment is in progress for project area to support approval applications including,

- ◆ A background review of environmental features (fish, wildlife and habitats),
- ◆ An assessment of fish and wildlife habitat,
- ◆ An outline of project features that may affect the environment,
- ◆ Specific mitigation measures to minimize or eliminate potential environmental effects, and
- ◆ An assessment of residual serious harm (Fisheries Act).

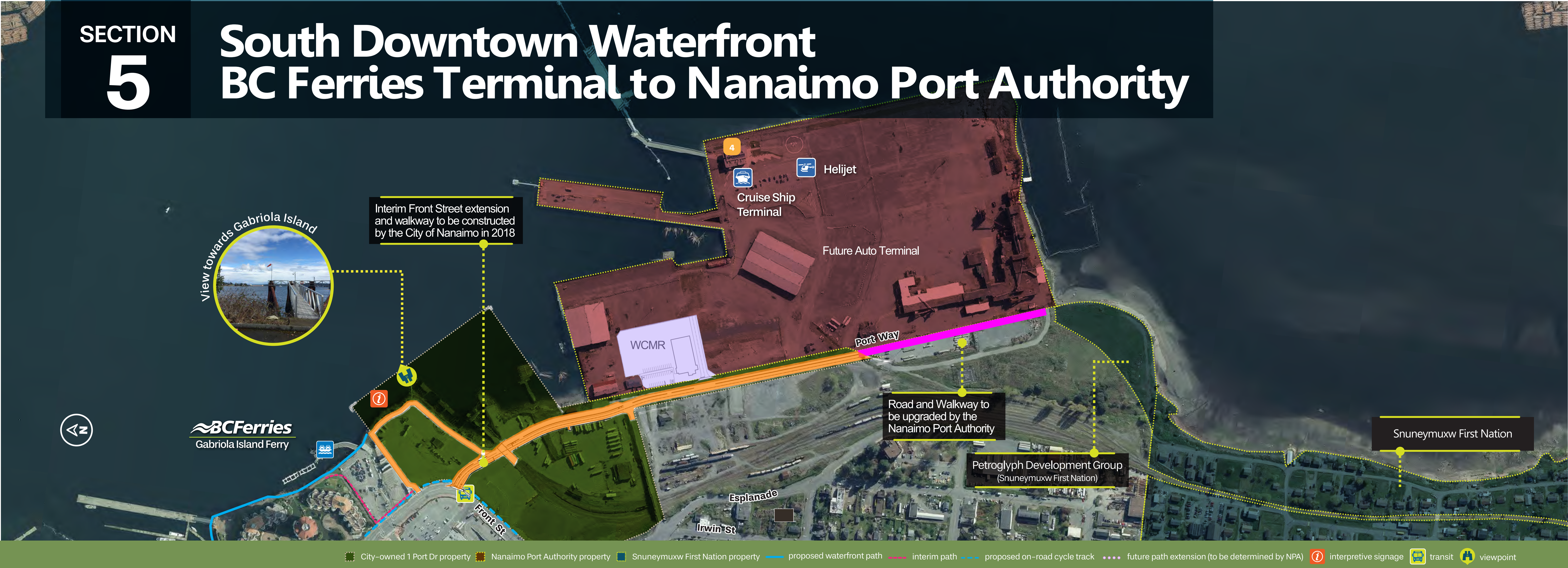
Preliminary Design Renderings

Departure Bay Elevated Walkway



SECTION 5

South Downtown Waterfront BC Ferries Terminal to Nanaimo Port Authority



Issues

Nanaimo Port Authority to connect walkway to NPA land and cruise ship terminal / Helijet

Coordinate walkway with Front Street extension

Coordinate with BC Ferries to develop safe walkway crossing through Gabriola Ferry Terminal as part of future terminal upgrades

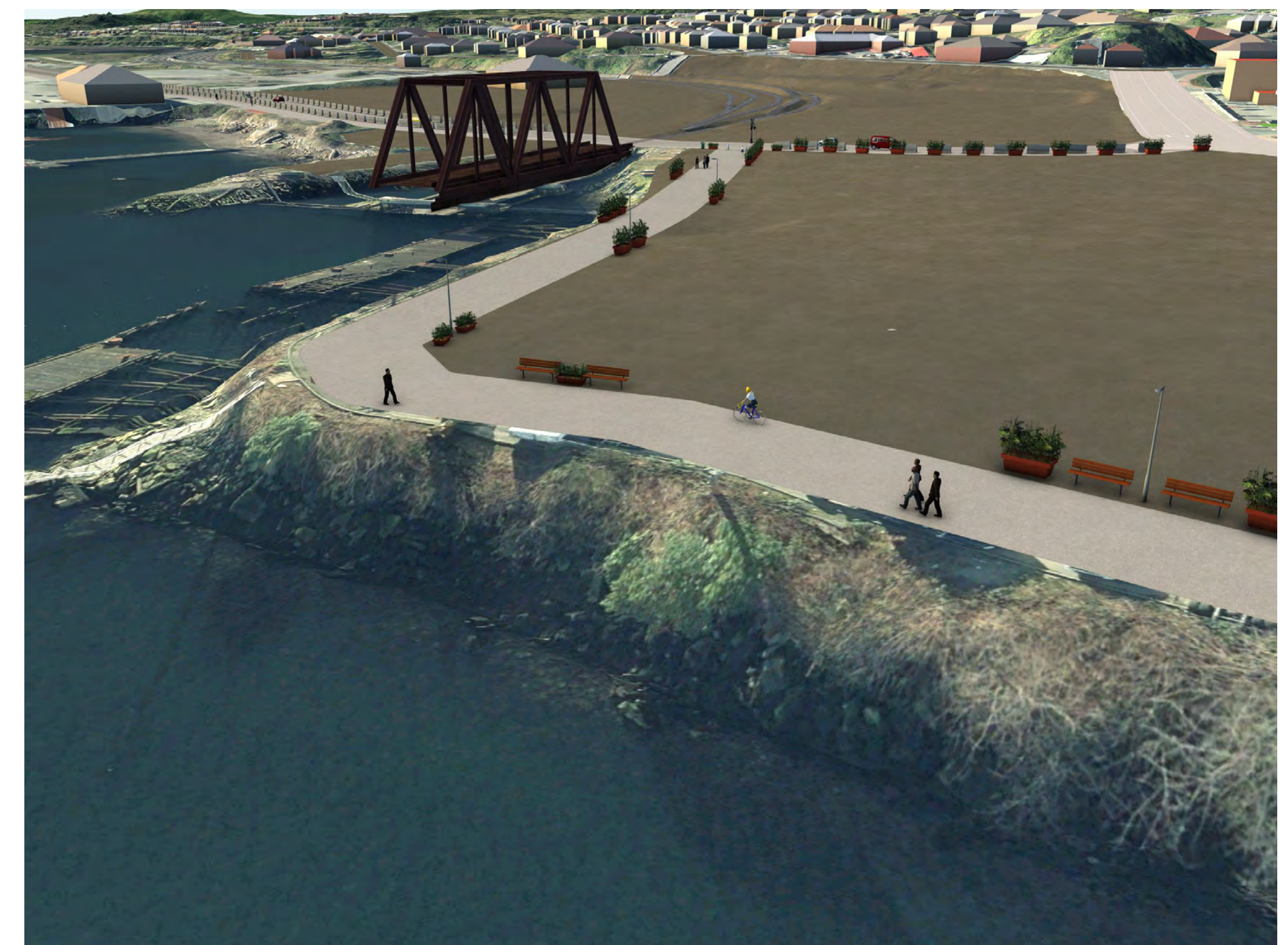
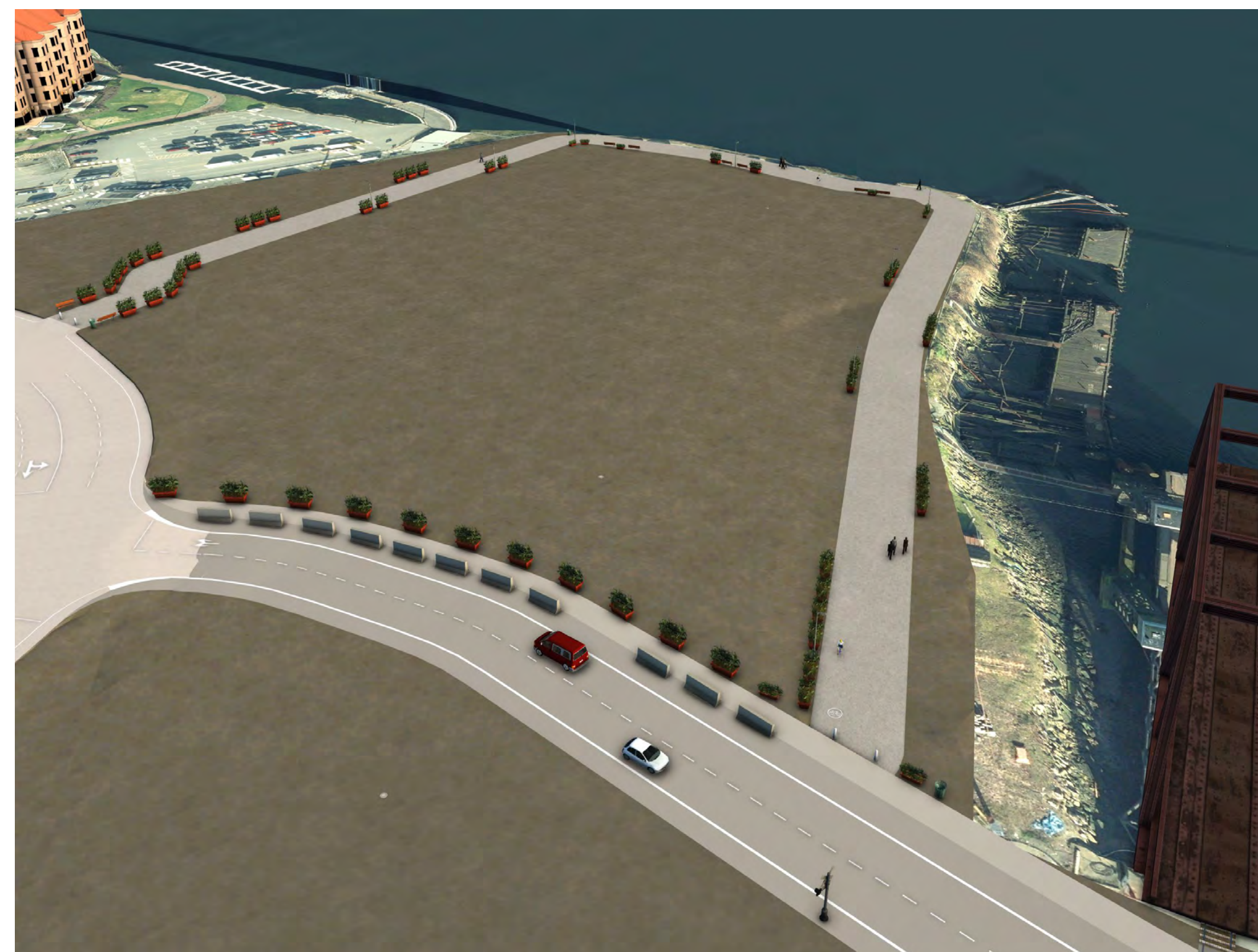
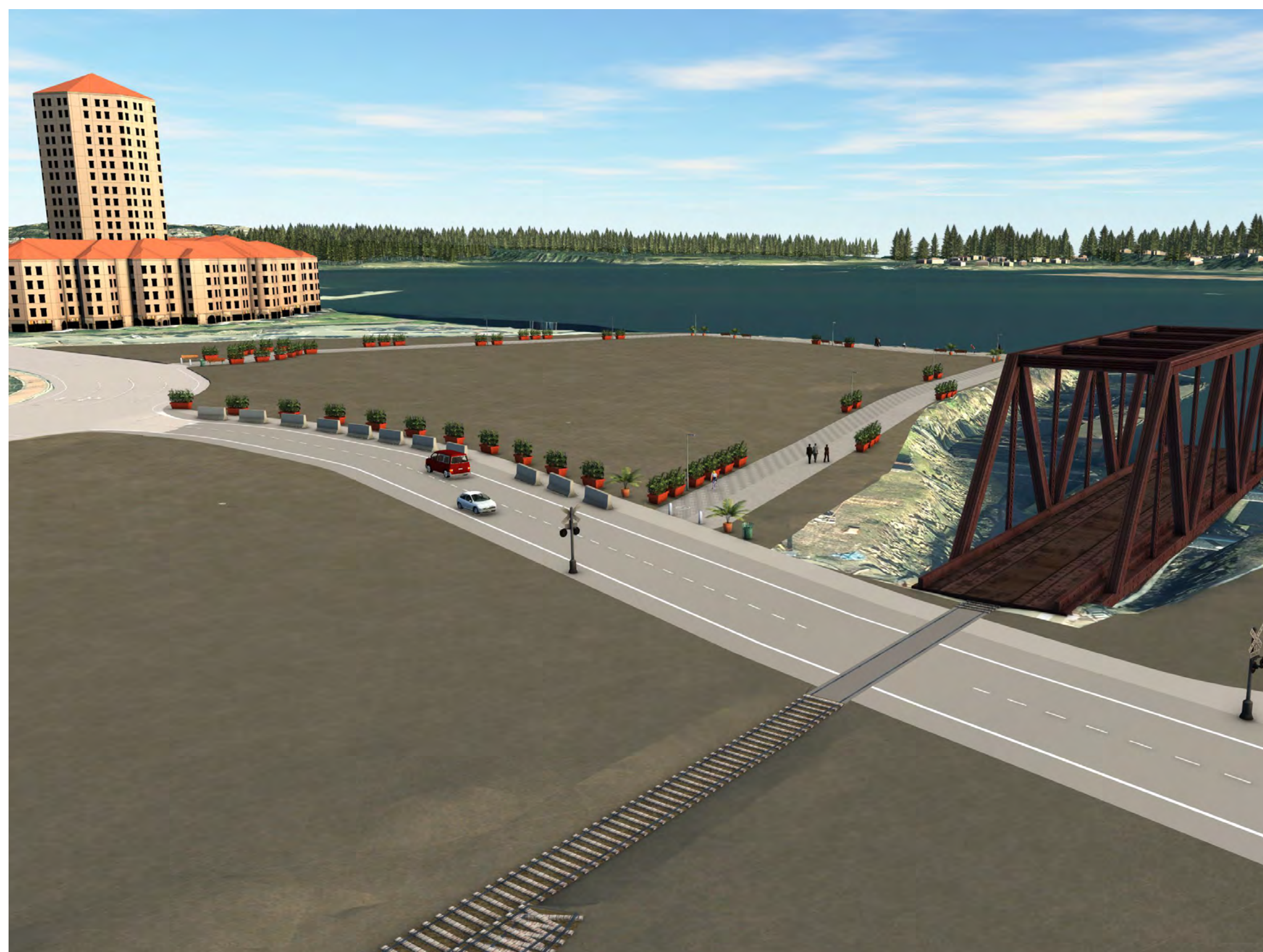
Design of a safe walkway across tracks at rail loading ramp required and to be coordinated with Front Street extension and Rail Authority

Considerations

Nanaimo Waterfront Walkway alignment to be coordinated with Secondary Access Study and Front Street Extension

Preliminary Design Renderings

South Downtown Waterfront



Design Options

Walkway Seating

What Do You Like ?



Please put sticker dots on the ideas that you would like to see on the walkway.

And please leave us your comments on a post it note



Design Options

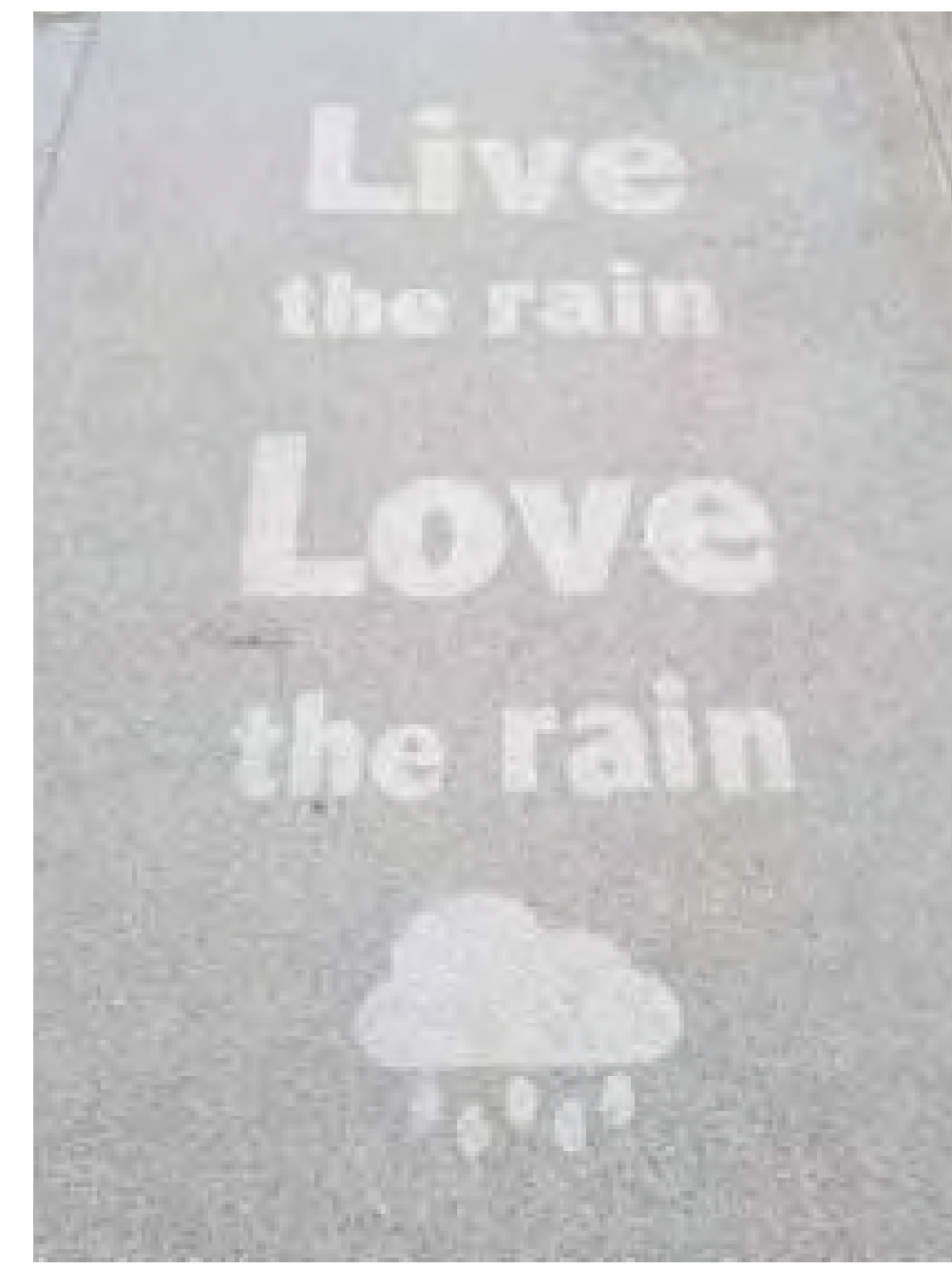
Public Art and Gateways

What Do You Like ?



Please put sticker dots on the ideas that you would like to see on the walkway.

And please
leave us your
comments on
a post it note



Design Options

Elevated Walkway Railings

What Do You Like ?



Please put sticker dots on the ideas that you would like to see on the walkway.

And please leave us your comments on a post it note



Design Options

Elevated Walkway Lighting

What Do You Like ?



Please put sticker dots on the ideas that you would like to see on the walkway.

And please leave us your comments on a post it note



Design Options

Interpretive Elements

What Do You Like ?



Please put sticker dots on the ideas that you would like to see on the walkway.

And please leave us your comments on a post it note



Next Steps

And please
leave us your
comments on
a post it note



We Want Your Feedback !

Please complete our survey here today or find it online at:

www.nanaimo.ca/goto/WaterfrontWalkway

All surveys must be completed by June 17

