



Georgia Greenway Phase 1 Summary of Public Feedback

May 2018



May 18, 2018

1.0 Overview

The City of Nanaimo has proposed an active transportation route through the Harewood Neighbourhood called the Georgia Greenway. This pedestrian and cycling friendly route would link key destinations across the community including schools, parks, sports fields, and commercial areas. The proposed trail was first identified in the Harewood Neighbourhood Plan, and is also supported by the Nanaimo Transportation Master Plan, Harewood Centennial Park Master Plan, and the Official Community Plan.

Phase 1 of the of the Georgia Greenway project is a multi-use trail through Harewood Centennial Park connecting Sixth Street and Seventh Street, including a bridge crossing over the Chase River. The initiative is one of five key capital projects adopted by City Council as part of the 2016-2019 Strategic Plan Update.

Phase 1 includes:

- A new multi-use trail connecting Sixth Street and Seventh Street
- A new pedestrian and cycling bridge over the Chase River
- New lighting along the multi-use trail within Harewood Centennial Park
- Safety enhancements at the intersection crossings of both Georgia Avenue and Sixth Street; and Georgia Avenue and Seventh Street

Engineering designs were completed in 2017 which included a public engagement program and a detailed review of bridge options to try minimize impacts to existing trees. Construction of Phase 1 was scheduled for the summer of 2018.

At the March 26, 2018 Special Council Meeting, Council passed a motion to “refer the siting of the bridge in the Georgia Greenway Project to Staff for further discussions regarding tree retention”.

2.0 Previous Public Engagement

Community feedback was a key component in the development of the Georgia Greenway design. In May 2017, Nanaimo City staff engaged the public to collect feedback on the Georgia Greenway Phase 1 concept as well as potential features, design character, and evaluation criteria to assess potential route options for future phases.

Feedback was compiled from:

- A drop in public event kiosk as part of the 2017 Active for Life Expo
- City Staff attendance with project information at the Georgia Avenue Elementary Celebration Station for 2017 Bike to School Week
- A public questionnaire with **162 Respondents**

Conceptual information was presented for project design criteria such as pathway surface material, lighting options, intersection crossing treatments, bridge width, tree constraints and future phase options. The public were able to provide feedback on the design criteria and amenities they felt should be included in the engineering design.

The majority of input received supported the Georgia Greenway project. The key themes we heard in support of the project included safety improvements, added overall community benefit, encouragement of active transportation, improved accessibility, and connectivity for the neighbourhood.

The top three evaluation criteria identified by survey respondents in the 2017 survey were,

1. Crime Prevention Through Environmental Design (CPTED)
2. Pedestrian / Cyclist Ease of Use
3. Separation from Vehicle Traffic

A full summary report of 2017 Public Engagement is available on the project [webpage](#).

3.0 May 2018 Community Outreach

After completing further review of both the current design bridge width and tree removal required, Nanaimo City Staff took the results of this additional review out to the public in order to obtain feedback about how residents feel the project should proceed.

Feedback was compiled from:

- A drop in public event kiosk as part of the 2018 Active for Life Expo
- A new online public survey (with paper copies at event)

Outreach to inform residents about the public engagement event and survey was made by:

- Project website www.nanaimo.ca/goto/GeorgiaGreenway
- Social media postings through City of Nanaimo Twitter and Facebook accounts
- Communications with the Harewood Neighbourhood Association
- Posters boards around Harewood Centennial Park and surrounding area
- Flyers delivered to households in surrounding area
- Fridge magnets handed out at the Active for Life Expo event

See Section 7.0 for display material from the 2018 Active for Life Expo event.

4.0 Summary of Feedback

The following summarizes the overall feedback received. For a detailed summary, see Section 5.0.

4.1 Participants

A total of **215 participants** completed the new public survey. Information provided indicates,

- that 33% more surveys were completed in 2018 than in 2017,
- that the largest number of participants live in the Harewood Neighbourhood (64%),
- that most participants were already aware of the project (38% Somewhat, 32% Very),
- that we heard from new participants that did not know about the project (11%)
- that most participants would likely use the Georgia Greenway active transportation route if it were implemented (51% Very Likely, 17% Likely), and
- that there were participants from all age groups

4.2 Overview

In general, residents that participated in the public event and survey support the implementation of the Georgia Greenway within the Harewood community.

- The majority of input supports Phase 1 and view the project as a neighbourhood benefit that would provide more connectivity with the park and surrounding area and create a safe active transportation route for pedestrians, cyclists and families of all ages and abilities.
- Some oppose Phase 1 due to concerns over the proposed bridge width, tree removal required for the bridge, project cost and impact on taxpayers, and safety concerns

4.3 Key Issues

Bridge Width

Communicating information and obtaining feedback on the multi use intent of the proposed path and bridge was one of the key objectives in May 2018 public engagement. Information provided to the public included:

- The Harewood Neighbourhood Plan, adopted by Nanaimo City Council in 2013, is intended to provide overall direction and help guide future development within Harewood. One of the key strategies identified in this plan is to:
“Create a neighbourhood street bikeway on Georgia Avenue, including a multi use path across Harewood Centennial Park, and a multi modal bridge across Chase River. This route will utilize rear lanes as well as sections of Georgia Avenue between Fourth Street and Eighth Street. Over time, the route could be developed into a full greenway street with traffic calming features to limit / slow vehicular traffic.” Page 72, Harewood Neighbourhood Plan
- The Harewood Neighbourhood Plan also comments directly on the width of the proposed path:
“As part of the Georgia Avenue bikeway, create a new 4.0 metre wide multi use pathway across Harewood Centennial Park, with a new multi modal bridge over the Chase River.” Page 127, Harewood Neighborhood Plan
- The current bridge design width meets recommendations in The City of Nanaimo’s *Bicycle Facility Design Guidelines* which stipulates that multi-use paths should be a minimum of 4.0m wide.

- Reducing the bridge width is not in conformance with the Harewood Neighbourhood Plan.
- Feedback from the public will be used to assess community support for a multi use bridge.

A majority of the feedback received supports the Harewood Neighbourhood Plan's objectives for a multi use path and multi modal bridge, including the current designed bridge width that allows for the comfortable and safe use by pedestrians and cyclists of all ages and abilities.

Some of the feedback received supports the multi use path, but not the proposed multi modal bridge width of 4 metres. Some expressed that the bridge should be more narrow and require that cyclists dismount to cross. Some expressed the bridge is a waste of tax dollars.

Tree Removal

Providing information and obtaining feedback on the proposed tree removal for the bridge was another one of the key objectives of the May 2018 public engagement. Information provided to the public included:

- Three bridge alignment options were assessed during engineering design.
- The current bridge design includes a straight alignment that offers the best sightlines and will provide more comfort and safety for users of all ages and abilities. It also allows for easier monitoring by the RCMP, which supports the CPTED principles requested through the 2017 public engagement.
- Alternate alignment options explored had negative impacts to safety and private property, and exceeded available budget.
- Approximately 18 trees need to be removed for the bridge. This includes one significant big leaf maple tree on the north river bank and two landmark cotton trees within the north floodplain area.
- The big leaf maple must be removed for large construction equipment needed to build the bridge
- A Professional Forester completed a review of the two landmark Cottonwood trees. Each tree was visually assessed and underwent specialized testing to provide data about their inner condition.
- The Professional Forester provided a detailed risk assessment that concluded both of these trees have decay within their trunks, and both would pose high risk to people using the bridge and the bridge structure itself if the trees remained after a bridge is built. They also commented that the likelihood of failure of these two trees after construction of a bridge could be as little as two years.
- Both landmark cottonwoods should be removed for safety purposes regardless of bridge width.
- A tree compensation plan will be prepared by a qualified environmental professional and it will include a minimum of 28 new trees. It will also identify improvements to the riparian area including the removal of invasive species and restoration with appropriate plantings to improve the overall habitat quality along the Chase River within the project area.
- Efforts will also be made to improve the planted buffer for noise and light between Harewood Centennial Park and residential area on the north side of the river.

A majority of the feedback received (75%) supports the removal of select trees, including the two large cottonwoods, to allow for the construction of a multi use bridge. Many comments indicated that their support for the removal of trees is conditional on the proposed replanting of new trees.

Some of the feedback opposes the removal of trees due to:

- Concerns over negative environmental impacts and loss of natural beauty in the area,
- Concerns over increased noise and light pollution from the park and greenway,
- Concerns that there will be a loss of privacy for neighbouring properties,
- Because it is for a bridge and pathway that is too wide, and
- Because there are already bridges on Bruce Avenue and Howard Street.

Safety

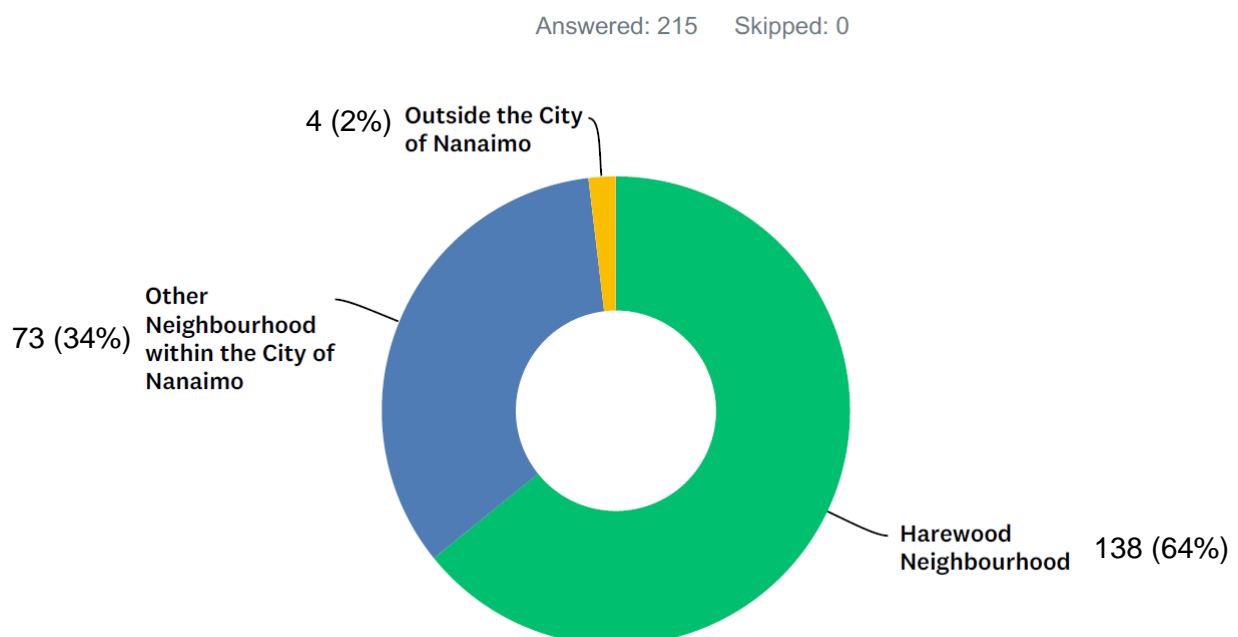
A large amount of feedback was also received indicating that safety is an important design criteria for the Georgia Greenway. Feedback on the current design included:

- Support for users all ages and abilities, especially children and senior,
- Security from falling trees for both people and the bridge,
- Support for new crosswalks at the roadway intersection crossings.
- Support for lighting along the pathway and bridge,
- Support for increased visibility of the trail from both the roadway and the park, and
- Requests for increased patrol and monitoring from RCMP

5.0 Detailed Survey Summary

Question 1

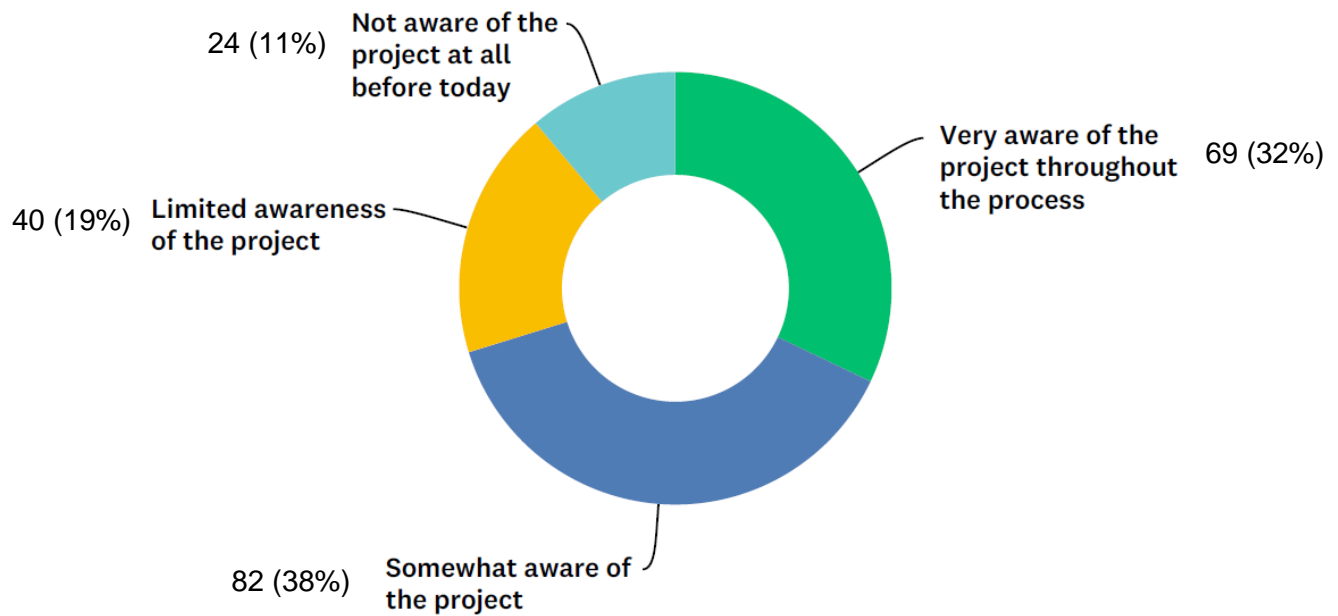
Which best describes where you live?



Question 2

How would you best describe your level of awareness of the Georgia Greenway project to date?

Answered: 215 Skipped: 0

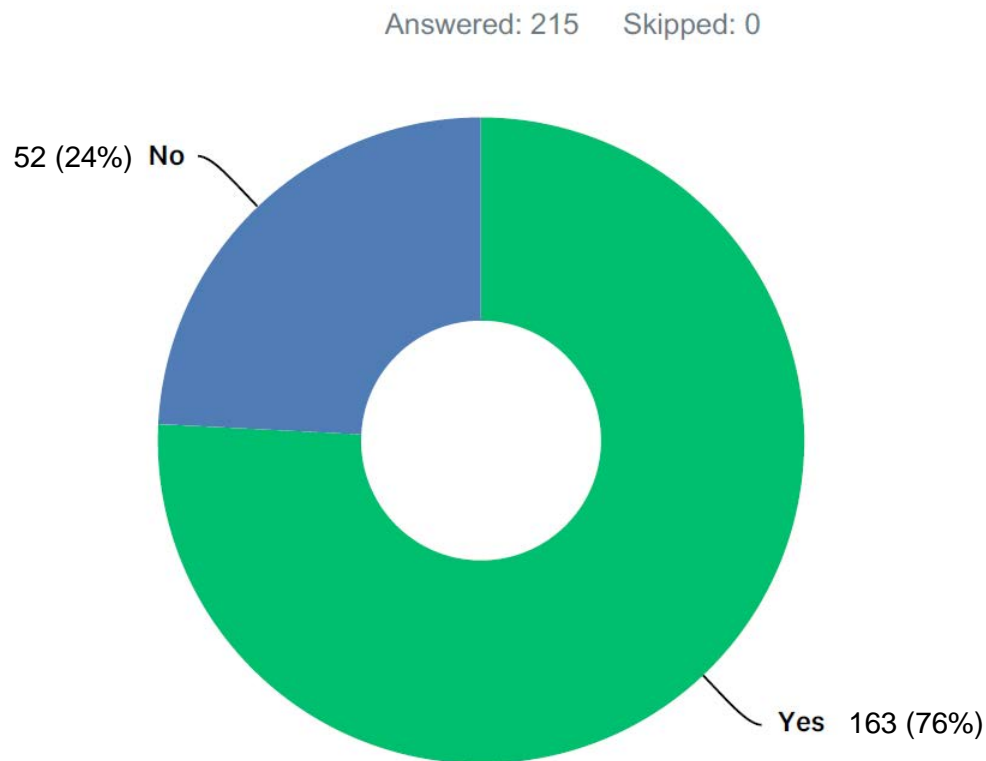


Question 3

The Harewood Neighbourhood Plan provides a long range vision to help guide future development. One of the key strategies identified in the plan is:

"Create a neighbourhood street bikeway on Georgia Avenue, including a multi use path across Harewood Centennial Park, and a multi modal bridge across Chase River."

Do you support the strategy above which includes a bridge across the Chase River for walking, running, biking and rolling?

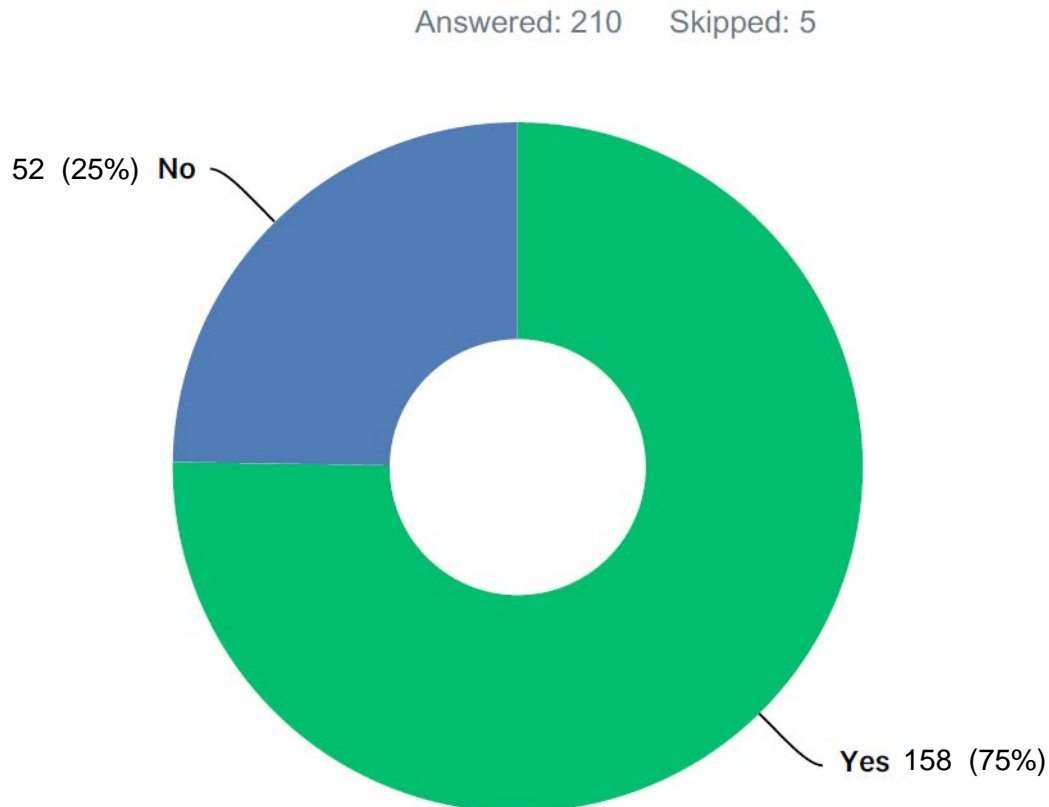


41 respondents provided additional comments to this question. See Section 5 for all comments.

Question 4

Construction of a multi use bridge across the Chase River will require some tree removal, including two large Cottonwood trees. These Cottonwood's have been assessed by a Professional Forester who concluded both trees have decay within their trunk, and would pose high risk to people using the bridge and the bridge structure itself if they remain after a bridge is built. New trees would be planted to compensate for the trees removed.

Do you support the removal of select trees in order for the bridge to be built?

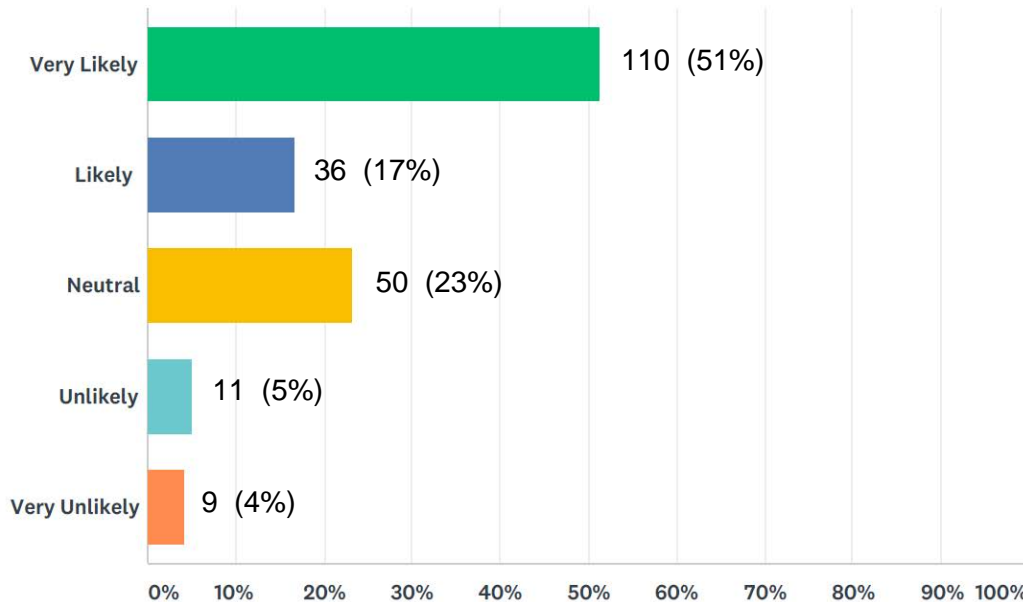


66 respondents provided additional comments to this question. See Section 5 for all comments.

Question 5

How likely are you, or members of your household, to walk, run, cycle, or roll if the Georgia Greenway multi-modal pedestrian and cyclist active transportation route is implemented? Please select one.

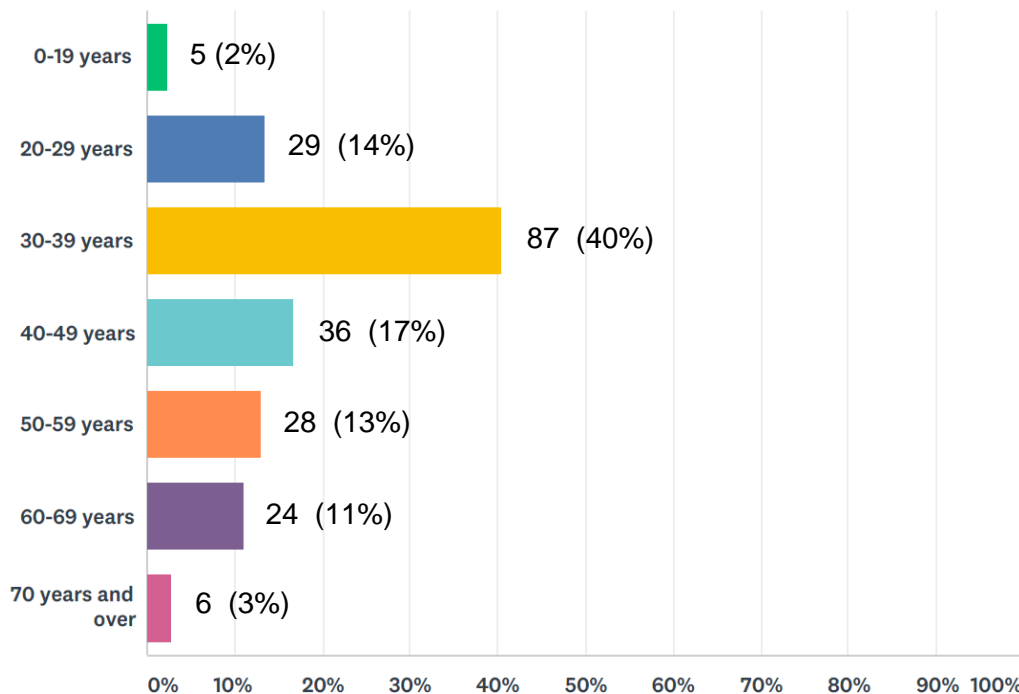
Answered: 215 Skipped: 0



Question 6

In what age group are you?

Answered: 215 Skipped: 0



Question 7

Do you have any other comments you would like to share about the Georgia Greenway Phase 1 project?

113 Respondents provided comments. See Section 6.0 for all open-ended comment responses.

6.0 Open-ended Comment Responses

The following is a verbatim copy of the open ended comments provided by respondents.

Question 3

The Harewood Neighbourhood Plan provides a long range vision to help guide future development. One of the key strategies identified in the plan is:

"Create a neighbourhood street bikeway on Georgia Avenue, including a multi use path across Harewood Centennial Park, and a multi modal bridge across Chase River."

Do you support the strategy above which includes a bridge across the Chase River for walking, running, biking and rolling?

- 1 This just makes so much sense as a safe recreational and commuting route.
- 2 Please don't let a small group of people stop this awesome project.
- 3 Not as proposed. 4m wide bridge is too excessive. Lights / impacts are bigtime factors for those in close proximity.
- 4 Couldn't it be along Howard st. instead?
- 5 We would loose a lot of the greenery in the area
- 6 too much money
- 7 Calling this project a greenway was misleading because it will require removing a large number of trees.
- 8 Its not worth it.
- 9 Consider a small bridge and not a multi modal bridge.
- 10 The multi modal bridge would required the removal of a large number of trees in the area. Its not worth it.
- 11 "We already have a parkway trail in the area. It will also create more traffic problems in an already busy area (Bruce and Fifth, Georgia and Fifth, Howard and Fifth.) Waste of taxpayer money."
- 12 Because building a bridge would require removing all of the mature trees in the area.
- 13 There are many options available to access Harewood Centennial Park. We don't need to clear an area with mature trees to build a multi modal bridge.
- 14 Building a bridge in that greenway requires the removal of the trees in the area. Residents would like to keep that area green.
- 15 "A bit disappointed here. Someone forgot to tell us where this trail is located. Hmmm .I live in Nanaimo and tried to find it, googled it but found zip for information. Looked on Nanaimo Parks list of Parks and nothing available. "

- 16 Concerned size of walkway and what will happen to the river with more traffic etc. Where the this path comes out is on to a road that illegal traffic large transportation trucks and drivers who speed. I also have concerns about Sunny Brook private space not become public. We already accept playground noise don't need extra noise people hanging on bridge hours of the day. Just a reminder a few years there was group of concern people that wished the roads around Georgia Ave school were 30 zones that did not happen is another playground go to be built at the school for special needs kids.
- 17 "Yes, build it right the first time and get people out of their cars. "
- 18 Unnecessary and will cause problems for residents of the neighbourhood.
- 19 4 meters is unnecessarily wide for the bridge. Perhaps even too invasive
- 20 Quit wasting tax payers money on useless things like trails and grass and gardens on highways medians. Taxes are high enough already
- 21 "My side yard fence abuts the laneway which is about to be converted to a ""greenway"". That's what we were led to believe. However now I realize that the greenway is less a greenway and more of a roadway. I don't believe a green path has to be so wide and city like. People and bicycles can use and enjoy the area without it having to be constructed on such a large scale. I suspect that the City has future plans to develop the ""greenway"" into a city street, but they are not divulging those plans. "
- 22 "I support the bridge, but not the enormous siz "
- 23 consider a narrower bridge for the pathway
- 24 "I support a bridge for use of the trailway, but do not want the bridge used for actual riding. Cyclists can dismount and walk their bikes across the bridge as they do in almost every other bridge in our community. Dismount signs should be posted on both sides of the bridge."
- 25 The designs had no regard for the environmental impact. I would like a much smaller bridge that doesn't require trees cut down. A smaller beige could still host travellers of all kinds; we can be courteous when crossing. As well it could be more cost efficient.
- 26 "yes, we have been following the plan for a couple of years. Any variation of the width of the bridge puts people at risk. Seniors will be lined up like bowling pins congested on the bridge on their walkers and in their wheelchairs with their dogs as the commuting cyclists come barreling across that bridge. No congestion allowed! It is basic safety!"
- 27 "Adding the bridge is destroying the natural beauty and will bring more distruction than is happening now by people who do not live here and don't care about stream one the protection of the nature around it. Leave this space natural. There are plenty of pathways, roads etc to access hardwood parks"
- 28 sounds like bridge is massive and intrudes on natural beauty of area.
- 29 "I do not support the cutting of trees as I live right next to ""the Georgia greenway"". I am worried about increased crime, the width of the bridge is too wide. Another concern is trash accumulating in the walk way and being thrown over my neighbours fences who have pets that could be harmed."
- 30 It's a direct violation of the riparian zone.Plus I don't want the light (LED) and noise pollution associated with this project.I happen to live a stones throw away from that stadium and it is a behemoth.
- 31 I do not feel that the damage done to the river and ecosystem is worth the few feet that is saved by walking a route that has been used for decades via either Howard or Bruce Avenue.
- 32 I do not support the width of the proposed bridge.

- 33 "While increasing the foot traffic itself is not a bad idea, the traffic that flows down Sixth Street most days can be described as speedy, with some drivers failing to pay attention. The path proposed will have pedestrians walking across the road, and either the drivers will fail to notice, or the pedestrians will cross without looking (seen it happen already). The pathway will also cause disruption to the strata that is beside the proposed path. Already some residents of that strata have their backyards setup for bringing items like boats in from the current drive path, and this would cause problems for them and others. The apartment complex (Willow Grove Estates) is already seeing homeless activity and this bridge could attract more homelessness to the area for the quick access to the park/washrooms and ease of which to get to the new lacrosse building being built."
- 34 "No because the proposed bridge is too wide and would change the secluded nature of the area, possibly attracting noisy groups of people late at night."
- 35 "I'm concerned for the impact a bridge this size would have on Chase River and its habitats and not to mention the other wildlife Why can't we build a bridge similar to the ones recently built by the City at the Collery Dam crossing over the same creek, And these are built out of wood and they are nice and in my eyes it would look great to use wood instead of concrete. And the trails at the Collery dam are well used because of its beauty. Lets keep these majestic beautiful trees for all of us to enjoy ."
- 36 Get people out of cars as much as possible! Healthy and sustainable
- 37 "As I am directly affected with the construction and long term effects of this project due to my location. I feel that the engineering of this project as far as the details are concerned were kept away from the public's eyes. The artists drawing that was delivered to our door completely misrepresents the project in its entirety. The design and magnitude of the "Greenway" are over engineered for this area. We have 2 bridges that are less then 2 minutes away that can be widened or adapted for the same use on Howard and Bruce and used by a lot more people. The size of the bridge at just over 13 meters is ridiculous to even consider especially for the amount of traffic that would be using it. To call this a "Greenway" doesn't make sense, if you start taking all the "Green" down. There is nothing "Green" about damaging a fragile Salmon bearing stream and ecosystem in the process. On a personal note, our yard backs right on to this proposed project. The reason people have backyards is for some personal space. This may seem minor to some people but ask yourself how you would feel if people kept popping their heads up and looking into your backyard? It happens on occasion now, it's going to get worse! Not to mention the vandalism and garbage we will be dealing with that's left behind. So in truth I am not for this project, but if it goes ahead, Please Consider the impact it will have on those affected directly, In other words it needs to be designed with a much smaller impact on the environment and the neighbors along the proposed "Greenway". As for the trees, I understand that new info has come to light (which I shall look into) it seems interesting that they find a way to take care of that issue? I'm guessing a lot of trees will be coming down in Nanaimo in the next little while. At least we know the large Maple is in great shape and it should be protected. This idea of planting new trees sounds great but will take 60 plus years to grow to any significant height. Not to mention the types of trees that they are proposing?"
- 38 "There are 2 streets very close that make this project unnecessary. The impacts will be extremely negative, the chase river is a sensitive salmon River that needs protection. Money could be better spent on a nearby school that needs much improvement. There are privacy issues for the people who live backing on to this project. "
- 39 I don't believe a 4M wide bridge is necessary. The project seems way to big overall for where we live
- 40 Maybe a narrower bridge that does not impact the ecology of the river.
- 41 Yes only if the negative impacts on the river are very limited.

Question 4

Construction of a multi use bridge across the Chase River will require some tree removal, including two large Cottonwood trees. These Cottonwood's have been assessed by a Professional Forester who concluded both trees have decay within their trunk, and would pose high risk to people using the bridge and the bridge structure itself if they remain after a bridge is built. New trees would be planted to compensate for the trees removed.

Do you support the removal of select trees in order for the bridge to be built?

- 1 I was told there would be more new trees planted
- 2 As long new trees are replanted as the city person explained.
- 3 As few as possible for a smaller bridge.
- 4 No because if the cottonwoods are removed there will have to be many other trees removed as a consequence.
- 5 Keep the trees
- 6 "So long as they are replaced, I support this."
- 7 Don't build a bridge if it will require the removal of the greenway
- 8 Consider other options.
- 9 The assessment mentions that the trees only pose a high risk if a bridge were built.
- 10 The trees only pose a high risk with the construction of a bridge.
- 11 Don't build a bridge in an area that will require the clearing of a large number of trees.
- 12 Only the dead one only and no bridge is need
- 13 "I believe that trees are important to keeping the city a comfortable place to live. They provide shade, shelter from the elements, and beauty; however, a forest canopy must be maintained in urban and suburban areas. We must work with nature to keep it in our lives. Cottonwoods also grow like crazy so we will probably be able to recreate the canopy without issue in only a matter of years."
- 14 Cottonwoods are large weeds. Decay in these trees is normal and they should be removed.
- 15 "Spending hundreds of thousands of dollars (of my tax dollars) to redesign a bridge that would impact safety, CPTED, and cost control aspects of the design is just silly. Plant more trees along the greenway to compensate is a common sense approach "
- 16 "As long as the trees really are in danger of falling in the ""near"" future and pose a risk. Given liability issues these days, I have heard from others who have had trees assessed that the assessors are worried about liability themselves and err on the side of ""caution"". I understand from speaking to some of the locals when attending the event on May 12th that there is also a big leaf Maple tree which hopefully will be saved."
- 17 yessir... but make sure we plant more trees to make up for the ones we loose
- 18 "Yes, as long as they are replaced with healthy trees"
- 19 Let's get going on this!
- 20 Why are we delaying this project for two trees. Make this project happen.
- 21 Only because they are sick!
- 22 "Only if they are proven to be a danger to the public. I see that the City has already had professionals determine that the trees in questions are dead inside and pose a potential hazard. Fine, but how come the City hasn't checked all the trees in that area, as in the 11 years that I have lived here several large trees have toppled over. I fear that one might strike my house. Is that not a concern for the City? It seems they are only concerned about possible hazards if it interferes with

- their project. True, I haven't contacted the City about my concerns, however shouldn't they be proactive about things like that?"
- 23 "seems like you people are desperate to make up excuses as to why not build the bridge if the trees suffer from decay, cut them down, but the city says should we cut down the trees with decay, i am submitting that to THIS HOUR HAS 22 MINUTES CBC comedy show duh should we cut down the decayed trees DUH"
- 24 The assessment did not include the health of the large Maple tree. Please provide information on the total area to be cleared.
- 25 Make sure planting includes trees that are native to that area.
- 26 Cottonwood are not rare by any stretch in the area. peaceful walks and trails are.
- 27 "The development at barsby (lacrose box x 2) plus the proposed skate bowl will have such a significant impact on the area. I don't support a project that takes more of the beauty away. Taking out trees will mean more noise and light pollution, more importantly the trees are alive and well, with significant roots into the chase river. You can't honestly call the ""greenway project"" GREEN when this is how building is proposed to start :("
- 28 Is it possible to build the bridge where it doesn't impact trees?
- 29 Safety for small children and seniors is paramount
- 30 Let them be. And die when it is their time. If you don't build the bridge you don't need to remove the trees
- 31 I don't know enough about the trees to comment.
- 32 try to save them pls
- 33 These trees are not diseased and should be protected at all cost they are as much a part of our community as you and i
- 34 "As long as trees, shrubs are planted to compensate for the lack or greenery, integrity of the river bank. Can native species be planted? "
- 35 I live right across the street from where these trees are. I truly believe this project will lead to my neighbourhood being more safe! It is ridiculous to me that dying trees are preventing it.
- 36 Removal of select trees will increase the light and noise pollution for residents who live in the area.
- 37 "The current trees are the only barrier between park activities and residents who live in the area. The natural barrier is able to shelter residents from LED night lighting coming from the Park, and reduce the sound from park activities. Opening the area will result in significant increase in light and noise. "
- 38 "Absolutely! Cottonwood trees in our area are prone to decay and the ones in my yard need constant maintenance with pruning and make a huge huge mess every spring and fall, these are not desirable and sturdy trees! Very expensive and not practical! Absolutely support the removal of the decaying Cottonwood."
- 39 Please plant new trees to replace them.
- 40 "But make it a small salable bridge , say 6 ft wide."
- 41 "AAA bike paths are the way of the future. Nanaimo should absolutely be focused on building these pathways all over town. Although losing two large trees is unfortunate, the environmental, health, and other benefits of active transportation and AAA bike routes far outweighs the cost."
- 42 Plant more trees :)
- 43 I think these new trees need to larges size possible that can be planted
- 44 These trees are important for the wildlife and the fish and other habitats in the creek.
- 45 "Very much so! Cut them down and put up something non-allergy causing, non-rotted, non-ugly!"
- 46 As long as the effort for new trees in the area is met.

47 I don't like to see trees cut down for nothing either but getting people out of cars is so much greener
for the planet and we can plant many trees to compensate for the few they need to remove. The
impacts can be balanced I hope

48 "I think that planting new trees to compensate is an excellent compromise. Public safety (in the
design of the bridge, as well as safety from the trees once the bridge is built), and cost of the bridge
to the city, also need to be strong determinants in the design. "

49 "I am VERY disappointed that this fantastic project is being delayed for 2 Cottonwood trees.
Decayed or not, they are only Cottonwoods, not ancient oaks. And there is only 2 of them."

50 "I will do more research on the new info that has come to light, but either way the large maple is in
great shape and should stay. "

51 "No bridge. No need to take trees out. There is also a huge Maple, whatabout that tree? "

52 "I don't want to see trees removed from around the water as it provides shade, privacy and homes
for critters along the river and me as I live right here!"

53 Get it done already

54 "The lifespan of the existing trees needs to be taken into consideration. I would much prefer new,
healthy trees sited to complement the new bridge."

55 "I am the garden facilitator for the John Barsby School Garden. We have asked to use some of the
tree material including wood chips in our garden projects. The trees could be ""Harvested,"" to be
used in a community project. If you change the wording around how the trees will be cut, people
may feel better about them being harvested vs. cut down."

56 As little cutting trees as possible.

57 I am absolutely against a costly redesign to go around two aging trees that are past their prime.

58 "Council should NEVER have given in to 5 people protesting, delaying months of work and
untold costs in design. "

59 It seems like it would cause much disturbance to the river bank.

60 This is a no brainer and the plan should not have been derailed by uninformed tree huggers.

61 "Why is the Maple tree that was included in the removal not mentioned? I can not support this
unless the maple is protected. This survey seems to be very biased since there was no mention of
the width of the bridge, since that was one of the issues, not just the trees."

62 "Why we're having a debate over cottonwoods is beyond me. Cut them down. I was under the
impression that they were cedar, fir, Garry oak, or something else significant. Not weed trees"

63 "Seriously, stop caving to loud crackpots already, Council. We know you're desperate to get re
elected, but spending tens of thousands of our tax dollars because of 2 cottonwoods?"

64 Let's get going on this project. Stupid hippies are going to find something to complain about no
matter what

65 Where will the new trees be planted ?

66 "I feel that this project should not have been put on hold because of those mature trees. Now that
they are deemed high risk, it seems like a waste of tax payers money and the City's time to have to
regroup. Planting more trees will add to the green space and to the beauty and peacefulness at the
end of the project."

Question 7

Do you have any other comments you would like to share about the Georgia Greenway Phase 1 project?

- 1 Thank you for the information
- 2 Sounds like a great project that will be big enough to handle more people in the years to come.
- 3 Excellent project but need remains to be respectful of those in close proximity.
- 4 It seems like it would be a very artificial trail to be called a Greenway.
- 5 Invest elsewhere.
- 6 Explore alternative options that will not require the clearing of a large area of trees.
- 7 Use the money to repave city roads and repaint road lines that are barely visible!
- 8 Keep the forested area next to the chase river and consider other options for the pathway.
- 9 Residents in the area would like to see options that does not require the removal of a large area of trees.
- 10 No
- 11 Step in the right direction :)
- 12 We think it is a good project.
- 13 This would be prefect for my family we would usw it everyday
- 14 Do not need this bridge instead improve roads around John Barsby and run a safety program educating parents how to be safe on the roads etc
- 15 I think it is a great initiative and I can't wait to try it out once it's completed!
- 16 I would like to see this go through. Additionally I would like to see lights on this trail in order for it to be safe for all to use.
- 17 "The aspect of this project from a community relationship and health aspect (walking, running, biking) is incredibly valuable. Infrastructure like this is the catalyst for better neighbourhoods. I truly hope it proceeds as designed. And leave the bridge the way it is!"
- 18 "I strongly support that phase 1 greenway project and would like to see the project proceed within 2018. No more delays, let's improve off-road multi-mode pathways within Harewood and across the city."
- 19 "Would like to see adequate and safe crossing lights across busy intersections; in reference to the 6th St. crossing. The bridge and pathways would also be well served with focussed LED lighting to light these areas as a safety precaution. This project is well worth the effort, as it provides a welcome development for the community. Families can benefit from the access to increased activities that tie people with a sense of community."
- 20 "I STONGLY feel that the crosswalk put on 6th street, or any other street the greenway crosses, should have a pedestrian/cyclist/etc. activated light. While the city may perceived that this is not necessary, as a regular pedestrian in Nanaimo I know how bad drivers are at stopping at ""regular"" crosswalks. There is an elementary school only a block away, which implies that many kids may be using this path each day. As an adult, who also perceives my life to be important, I feel the safety of everyone using the crossing would be enhanced with a pedestrian activated crosswalk light. "
- 21 thank you for the information
- 22 once its completed i would like to see more cops on bikes patrolling the area to help downsize crime
- 23 A narrower bridge would suffice
- 24 Waste of resources and money

- 25 "I'm looking forward to having another healthy, pro - social space for people of all ages to enjoy
in our neighborhood. I'm a little ashamed of those who've worked to slow this project."
- 26 Keep up the great work. Would love to see it built in 2018.
- 27 Excellent idea for providing active and safe options for transportation within Nanaimo.
- 28 Just try and keep the natural beauty of the area
- 29 "During this process I have learned that the planning and development of this project went ahead
without City Council having much, if any, knowledge of the actual plans. I learned this by
watching the council meeting where the neighbors concerns were presented. Is the City allowing
individual departments to develop projects without input from the Council?"
- 30 I love that this project would allow for safer access to the surrounding areas. Bruce Ave is a busy
street with many intersections and I see people/kids/bicyclists in danger almost every day. It is a
bit sad that 3 trees will have to be cut down but I think the pros of having this walkway counteract
that sadness. It would be nice if the city would replant a few trees somewhere else to "replace"
the ones cut.
- 31 Was very sad to hear this was not proceeding. My daughters attend daycare nearby and I was
thrilled to hear of this going ahead as they would get plenty of use out of it. It would have given
them a safe route for outings away from busy traffic.
- 32 "I could not find a map of the proposed trail. Also, I worry about the safety of children on the
trail. Would it be lit? Are all areas of the trail visible from the road or park? Thanks."
- 33 "The term ""Greenway"" refers to the entire project, not the trees located at the bridge. Some very
vocal people have delayed the project, and while I appreciate their love of those trees making
changes to the bridge is not in the best interest of the whole project and the safer route it would
create for our community."
- 34 Bruce and Howard continue to increase in traffic.....this bike path will help keep people alive....
- 35 "I operate a licence multi age child care program located on Nova St.and specialize in child care
for children 0-5. We use the hardwood continental park 2-3 times each week and go for walks
around the neighborhood often. In the area, there are few sidewalks for is to use and this new bike
path will give us a safe path away from busy traffic for our daily outings. Most importantly, we
cross seventh st from georgia ave to get to the park and there is no crosswalk. A crosswalk would
be a huge safety improvement for our neighborhood."
- 36 I have no problem with it. Would like a smaller foot print of a bridge and tonknownwhat
replant/regrow th is planned after trees are cut.
- 37 "phase 1 seems like a really sad and pathetic joke do you people even read what it says ?? yeah
well like we cancelled that and postponed that and deferred that, So what have you actually
accomplished? um nothing and all this for 2 decayed trees, like jesus fucking christ what is wrong
with your people you people are sad joke, if you really wanted to build the bridge, you just would
have cut down the 2 decayed trees dear god in heaven you people are pathetic and believe me no
one has forgotten that you people were desperate to rip down the colliery dams and have ZERO
CREDABILITY"
- 38 Tell the tree huggers to pound sand
- 39 "Please go ahead with this project and more like it! It's very much a move in the right direction.
Thanks! "
- 40 "Provide plans for narrower bridge options and ask for feedback from the residents. A bridge this
size would be the largest of its kind in Nanaimo and will impact residents who live nearby. Please
prioritize tree retention and a narrower bridge. "
- 41 In future we make think of other ways to communicate to the residents of Harewood as well as
Nanaimo residents in general.

42 There are many other ways to save trees such as preventing massive subdivisions that cut them all down. A couple trees cut down to improve access to park space is very reasonable. If you're thinking about saving trees consider amending the OCP for the existing properties behind the new development on Cordan street to allow for future park space for all the kids in this neighbourhood with no park. Right now it's all "steep slope residential". I'd hate to see all those properties bought by developers and turned into just housing with no green space. How's that for hijacking a survey ;-)

43 I think this will be a great addition to Harewood. It will provide a link to the park and elementary school where kids can ride their bikes safely. I see us using this to go walk/ride to the Park rather than using Bruce. Don't feel safe having my 5 year old riding her bike along Bruce.

44 It's about time:) We use the Parkway and E and n Trail all the time and would love to use the Georgia Greenway project:)

45 "Thanks for trying to improve the area, my family and I appreciate it. "

46 Great idea. Thanks to the community

47 This is a great project for the neighbourhood. To scrap it for the sake of a few loud voices who want to save two rotting trees is a real shame. It's sad to think of the extra waste of taxpayer dollars to get a forester to check what was already known.

48 "I am in the 60-69 age group but marked 60-60 as I believe it to be an error. Build the bridge for all to use, with courtesy of cyclists to dismount and not ride across, to show respect for those walking or pushing strollers, that may want to stop for a second or more."

49 "A smaller bridge that doesn't require the removal of trees is the objective. Please explore those designs only, we have already seen other designs and don't agree the bridge needs to be so large!"

50 "I believe we should have similar Greenways connecting spaces throughout the city, preferably with a green buffer (eg. trees or bushes) separating the greenways from unsightly, noisy motorized vehicle traffic. ... This will be a good thing for Harewood so long as we can slow the traffic that crosses the Greenway."

51 I support the project as laid out in the neighborhood plan.

52 I am sick of the city pushing their ideas of what we need here. This is not something that we need!!!!!!

53 Would love to see a map of the proposed project. Perhaps there is one at www.nanaimo.ca???

54 I'd like to know more about it. I haven't heard until now that the proposal exists.

55 It'd be great to see it happen!

56 I love the idea of this project. As a family with a young child we would make a lot of use of this greenway. We already bike and walk this area but a more dedicated route would be excellent for safety (from vehicle traffic) and a sense of community connection. I am worried a little about drug activity or homeless camps along a more secluded path though.

57 no unnecessary paving

58 "I like the idea of having a safer trail to walk in ,but it should not be too wide.Wide enough for two bikes to pass each other is enough.We need to do the least damage to the existing flora as possible.My fear is this will turn into a thieves trail."

59 I would like my backyard to stay the way it is. This has been my home for my 21 years of life. This project will cause more trouble than good.

60 STOP IT NOW!!!!

- 61 I have a family member who is severely affected by the lights and noise coming from the building of this structure and soon the use of it. I feel it is very important that any tall trees be kept in the area to help block some of the overflow of light and noise so as to alleviate some of it. I also feel this building should have some sort of blind system on the river side to block the massive led light that is thrown out of the building. It is going to be unbearable especially in the winter when the trees have no leaves.
- 62 "I think a wide bridge is important in order to encourage easy flow of non-motorized traffic in that area. Harewood should be proud of the Sherry Fields, Harewood Water Park, new multi purpose Lacrosse box. What a great way to show case a beautiful historic neighbourhood with fantastic amenities. Both John Barbsy and Georgia avenue students and families stand to benefit greatly from this project for safe walking/riding to and from school. Student learning and increased chances for collaboration between elementary and secondary school will increase due to the inviting and easy to use bridge."
- 63 "In my opinion, this would be of great benefit to safely traverse through Harewood especially with the continually increasing traffic on Bruce Ave and Howard Ave. However, I would be concerned about my children using it to get to Harewood Park alone due to the increase of homeless people, thieves and addicts. Lighting should be a very important feature of this. Also, I would like to know the environmental impact to fauna living along the Chase River corridor. "
- 64 Consider options for a smaller bridge and keep as much of the green as possible.
- 65 "Considering a smaller sized bridge may better suit the needs of the residents who live in the area. This could include more tree retention and preserve the natural barrier between Park activities and residents in the area. "
- 66 "Common sense would lead to a narrower bridge with out all the \$ spent. Both sides early accessible currently by vehicle. Cleaned up site lines were wise. Foot traffic will reduce the "" smokers"" currently hanging by the creek. Need to look at why staff frequently wants to over do things."
- 67 "Enhance the current new lacrosse box to be adaptable to other sports, ie basketball, pickle ball, dryland training. This will ensure more positive users in this out of the way area to keep an eye on this great new facility."
- 68 "If the planners decide to go with the project anyway, please take note that during the winter months, the Chase River water level does get quite high, so plan accordingly. "
- 69 Who are all these people rolling? Will this be a new form of exercise? Harewood rolling classes commencing in the fall!
- 70 we live 1 block over on Nova. our 2 yr old daughter is learning to ride a tricycle and loves walks. we are looking forward to making use of this. we go to the big playground at least once a week as well
- 71 "I strongly support this project, and my vote in the municipal elections will go to candidates who support this and similar products. "
- 72 Build it! And build as many AAA bike routes in Nanaimo as you can!!!!
- 73 Plant more trees to replace the taken down trees!
- 74 "As much as those trees have been icons in my view from home for my entire life, I trust professional assessments and would rather see a bridge put in. "
- 75 Fantastic project - it will definitely help creating safer walking/biking routes to school for the kids.
- 76 I do not thing that we need a 4 m wide walk way
- 77 Please consider a narrower bridge that will minimize the impact on the environment and our neighbourhood.

- 78 "Residents of Sunny Brook have concerns over the LED lights that are on at night, and the increase in sound that will come from the Multipurpose Area, Lacrosse Box, Parking Lot, and Proposed Skateboard Park. We have concerns that opening the area, and clearing a large number of trees for the proposed 4m pathway, will increase both the amount of light at night and sound coming from the Park. "
- 79 Let's focus on Mother Nature and build something that fits with the name Greenway No concrete preferably wood and size down the project to 2Meter. We call this a Greenway project and the first we do is cutting down some of the oldest trees in Harewood. WHY
- 80 "GET SHIT DONE!! We are asking for a bike/walk pathway to safely access a gorgeous city park. It encourages people to get active. It will increase the use of a wonderful city Park that includes playground/bmx/waterpark/lacrosse. This isn't rocket science. Take out the rotten trees, plant new lovely trees and shrubs and provide the people with safe enjoyable access to city facilities. "
- 81 "We don't need a Greenway if it is forever filled with garbage and used needles, or creates an unsafe walkway for vulnerable people. What planning strategies are being implemented to make this project safe and clean, and therefore able to meet its community objectives? "
- 82 "Clear garbage cans/ recycling. Promise of up keep of the trail. Would be cool if it somehow was linked to the other parkway trails to access departure bay. Also, replacement of trees that are being taken down somewhere in the area. "
- 83 great project. Get it built!
- 84 does this extend up to the elementary school? Would be great to get little kids off the streets and get them used to biking and not using a car at a younger age
- 85 "Thank you for the ongoing public consultation efforts. I look forward to using this route to commute by bicycle to work in the Beban Park area (which I will access via Pine then E&N). The current bike path along Bruce is appreciated, but a little too intimidating even for an avid cyclist like myself. I do wonder whether this open survey design will result in people filling it out more than once. "
- 86 "I have 2 small children and we walk to Harewood water park often. We would love to have a bike trail that connects us there, as well as to our neighbour's ! This is a great project!"
- 87 Please continue with this project with the original bridge plan. The loss of two half rotten cottonwood's is nothing. New trees will be planted. Cottonwoods are terrible for people with allergies. Please do not let a few naysayers ruin this for the rest of us.
- 88 "This project is beyond the ability of Nanaimos Tax base, as they have only one goal in mind and refuse to budge or adapt to the people's needs. This type of project is something you would see in a much larger tax base such as Vancouver. In truth it is easy to see why they chose to try and start with the bridge section, the area with the largest impact on the environment! To pay 3 million dollars to walk 30ft is absurd. The details of this project have been kept low as well and only after a lot of writing and phone conversations were we finally able to see the real plans. It's hard to trust some of the city staff as we asked on several occasions if there were any alternate plans? They said no, but at the city meeting one hour before it all started I was shown 2 alternate plans the city had on hand. And again just recently their own staff member told them the trees were checked and found to be in good health. But they chose to ignore this "Arbourists recommendation." So tell me how would you feel? Do any of you live right on the proposed "Greenway"? "

89 I appreciate that we want to help improve the hardwood community. I feel like spending this much money is a waste where there are so many other issues that the money could be spent on like a new recycling plant as the one by the car dealerships was recently closed. Or putting the money into the schools. This project seems was to big for where we live. I moved here because of the beauty of my backyard and now that is being compromised by this huge project. I also don't feel like there was enough transparency with this project. I was told people In my neighbourhood we're included in talks but no one was. We have to live here. Would they mayor like all of this happening in his backyard???? I highly doubt it!

90 Get on with it!

91 "I was very excited for this project to come to fruition for my neighbourhood as we already walk a similar route. I was extremely disappointed that yet again, Council listened to 5 people with concerns and made a decision without rationale. Build the bridge!! "

92 "Please keep the momentum going on this project. It is going to make our neighbourhood so much more connected, accessible, and safe for so many different users."

93 "AS the facilitator for the John Barsby Garden, we encourage the construction of this project. We want to see a higher usership in the garden. FURTHER, the city has offered to help with our fence construction on the west side of the fence along the greenway. I support the construction of this project."

94 I encourage the city to have bike paths all over town so Nanaimo can have a healthier population.

95 I can't wait to use this trail with my two young kids. Thank you for moving forward with green initiatives such as these.

96 The bridge will be a great community amenity. Good work everyone!

97 Please get this project done. I am tired of a vocal minority of Nanaimo citizens preventing any sort of progress in this city. What kind of community rails against a bike path?

98 Love this project & hope to see work on it start soon without further delay!

99 "Fully support Georgia Greenway Phase 1! As we live in the North end of the city - there are a lot more people now cycling recreationally and to/from work - improving the E&N multi use trail as well as connector routes/paths/trails should be made a priority. Completing amazing " 2 BLOCK" bike lanes is like throwing a few pieces at a " GIG-SAW PUZZLE". The benefits of complete routes are numerous!!!! Please do consultation with the Graeter Nanaimo Cycling Coalition !"

100 "How many trees would you be cutting to build the bridge? How big would the bridge be?"

101 Do it. Cut down the rotten cottonwoods.

102 The questions in the survey seem designed to get the answer that staff want. To remove trees and put an overly wide bridge across. Another disappointment with communication with our City staff.

103 just get it done as cheaply as possible.

104 Would be great to see it built!

105 When will the skatepark be installed

106 I would like to know the extra cost that will be required to complete this job now that council has delayed the project probably until next year.

107 Get this done already.

108 Please proceed as planned!

109 "When will it be completed? We are very excited!"

110 "I'm happy to see the time, resources and energy put towards making our neighbourhood a better place. Thank you all for the work you've done to date"

111 Wish this was still being done this year

- 112 I feel this is a great project. Creating more inviting areas will encourage people to stick closer to home and to essentially enjoy their backyard.
- 113 Excited to see this project move forward and add to our area's cycling infrastructure.

7.0 Active for Life Expo Event Display Material

Saturday, May 12th, 10am-2pm



 Neighbourhood
Greenway 

Learn more about the
GEORGIA GREENWAY
... FOR ALL AGES AND ABILITIES!



Introduction

GEORGIA GREENWAY
...FOR ALL AGES AND ABILITIES!

WHAT IS THE GEORGIA GREENWAY?

The Georgia Greenway is a proposed 3.1 km pedestrian and cycling friendly route through Harewood. It will link a number of key destinations across the community including schools, parks, sports fields, and commercial areas.



Once complete, Phase 1 of the Georgia Greenway will provide a pedestrian and cyclist connection through Harewood Centennial Park between Sixth Street and Seventh Street, providing greater accessibility to the Park and connectivity for the Harewood community.

 Neighbourhood
Greenway

BACKGROUND

Nanaimo City Council selected **Phase 1** of the Georgia Greenway as one of the **Top 5 Key Capital Projects** and Initiatives in the 2016-2019 Strategic Plan Update.

The Georgia Greenway is supported by:

- ▶ The Harewood Neighbourhood Plan;
- ▶ The Official Community Plan;
- ▶ The Harewood Centennial Park Master Plan; and
- ▶ The Nanaimo Transportation Master Plan.

PHASE 1 | OVERVIEW

Phase One will be a new multi-use trail through Harewood Centennial Park.

It stretches a distance of approximately 0.5 km between Sixth Street and Seventh Street.

It includes a new pedestrian and cycling bridge over the Chase River.

Phase 1 will include trail lighting and safety enhancements at the intersection crossings of Georgia Avenue and Sixth Street, and Georgia Avenue and Seventh Street.

Council has approved \$1.2 million for phase one.

WHAT IS A NEIGHBOURHOOD GREENWAY?

Neighbourhood greenways are active transportation corridors that promote greater pedestrian and cyclist activity.

They support people of all ages and abilities to get around in a healthy and sustainable way.

Visit www.nanaimo.ca/goto/GeorgiaGreenway for more details



Planning Context

GEORGIA GREENWAY
... FOR ALL AGES AND ABILITIES!

THE PROJECT IS SUPPORTED BY:

- ▶ The 2016-2019 Strategic Plan Update
- ▶ The Harewood Neighbourhood Plan
- ▶ The Official Community Plan
- ▶ The Harewood Centennial Park Master Plan
- ▶ The Nanaimo Transportation Master Plan



Harewood Neighbourhood Plan:

This Plan was adopted in 2013 and includes an Urban Design Framework that is intended to provide overall direction and help guide future development within Harewood. One of the key strategies identified in the plan is to:

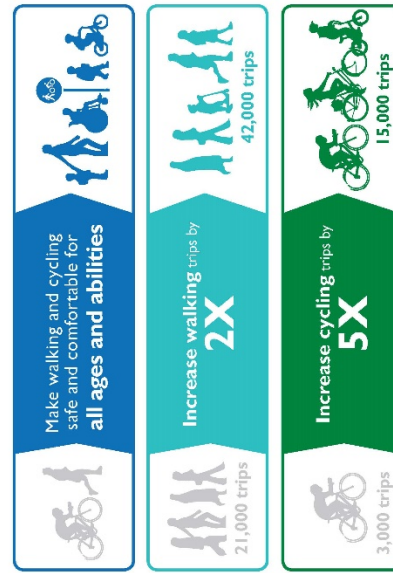
“Create a neighbourhood bikeway on Georgia Avenue, including a multi use path across Harewood Centennial Park, and a multi modal bridge across Chase River.”

“As part of the Georgia Avenue bikeway, create a new 4.0 metre wide multi-use pathway across Harewood Centennial Park, with a new multi-modal bridge over the Chase River.”

– Page 127, Harewood Neighbourhood Plan

Nanaimo Transportation Master Plan:

This Plan was adopted in 2014 and seeks to significantly increase sustainable modes of transportation within the City and sets a number of key objectives that are summarized by the graphics below.



THE ROLE OF THIS PROJECT

Through completing projects like the Georgia Greenway, the City takes one step closer to making goals reality and creating a livable and environmentally sustainable community where walking and cycling are key components of the transportation system.

Our goal is to create a comfortable experience for users of all ages, abilities, and confidence levels by incorporating a variety of pedestrian and cycling facilities such as multi-use pathways, traffic calmed local streets, and improved road crossings.



Visit www.nanaimo.ca/goto/GeorgiaGreenway for more details

Previous Public Engagement

GEORGIA GREENWAY
... FOR ALL AGES AND ABILITIES!

COMMUNITY ENGAGEMENT:

In May 2017, City staff engaged the public to provide feedback on the Phase I Concept, potential features, design character, and evaluation criteria to assess potential route options for future phases.

FEEDBACK WAS COMPILED FROM:

- ▶ A drop-in public event with an interactive kiosk as part of the 2017 Active for Life Expo
- ▶ City Staff attendance with project information at the Georgia Avenue Elementary Celebration Station for 2017 Bike to School Week
- ▶ A public questionnaire with **162 Respondents!**



A full summary report of feedback is available on our website

HOW WE REACHED OUT:

- ▶ Project website
- ▶ Social media posts
- ▶ Posters around Harewood Centennial Park & surrounding area
- ▶ Mailout letters to surrounding properties
- ▶ Phone calls, emails, and meetings with:
 - ▶ Residents
 - ▶ Stakeholders
 - ▶ Special interest groups including:
 - ▶ School District & Borsby Community Garden
 - ▶ Fire Department & RCMP
 - ▶ Vancouver Island University
 - ▶ Sunnybrook Estates Residents

TOP 3 EVALUATION CRITERIA IDENTIFIED BY SURVEY RESPONDENTS

1. Crime Prevention Through Environmental Design (CPTED)
2. Pedestrian / Cyclist Ease of Use
3. Separation from Vehicle Traffic



WHAT WE HEARD:

The majority of input received supports the Project. The key themes for support were:

- ▶ Safety improvements
- ▶ Added overall community benefits
- ▶ Encouragement of active transportation
- ▶ Improved accessibility and connectivity for the neighbourhood.

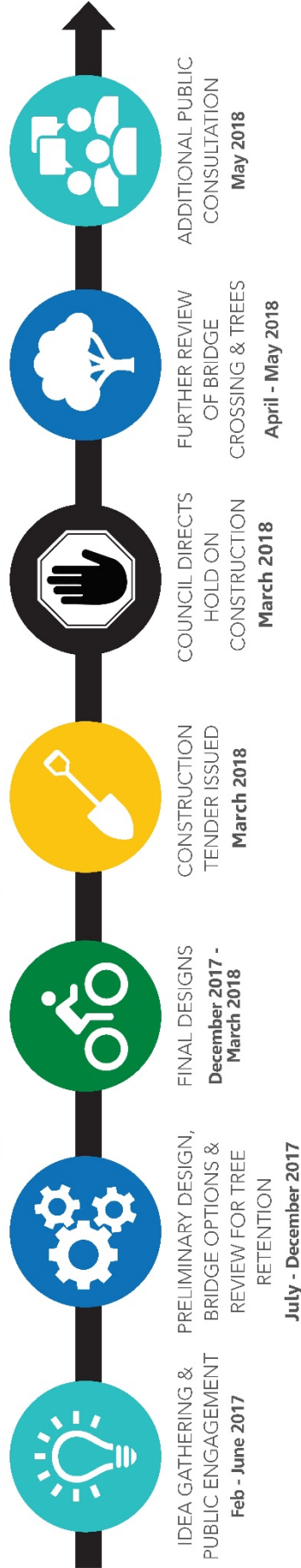


Visit www.nanaimo.ca/goto/GeorgiaGreenway for more details

Phase 1 Update

GEORGIA GREENWAY
... FOR ALL AGES AND ABILITIES!

Project Process Diagram (Phase 1)



SO WHAT DID WE REVIEW?

FURTHER TREE ASSESSMENT:

- ▶ An independent Professional Forester completed specialized testing of the two large Cottonwood trees to provide data about their inner condition.
- ▶ A detailed risk assessment was completed that concluded both of these trees have decay within their trunks, and both would pose high risk to people using the bridge and the bridge structure itself.
- ▶ The Professional Forester also commented that the likelihood of failure of these two trees after construction of a bridge could be as little as two years.
- ▶ The full report is available on the project webpage.



Figure: Tomography set-up

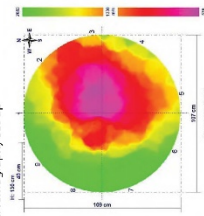


Figure: Tomogram of Tree #2

BRIDGE WIDTH REVIEW:

- ▶ The proposed bridge width was reviewed and it conforms with the objectives identified in the Harewood Neighbourhood Plan for a multi-modal bridge.
- ▶ The designed width also meets recommendations in the City of Nanaimo's Bicycle Facility Design Guidelines which stipulates that multi-use paths should be a minimum of 4.0m wide.
- ▶ Reducing the bridge width is not in conformance with the Neighbourhood Plan and City Design Guidelines. The results of this new survey will be used to confirm the multi use intent and bridge width designed.

WHAT DO YOU THINK?

Please complete a survey to let us know how you think the Georgia Greenway should proceed:

- ▶ Do you support the development of a Neighbourhood Greenway including a multi-use bridge over the Chase River and path through the park?
- ▶ Do you support the removal of select trees in order for the bridge to be built?

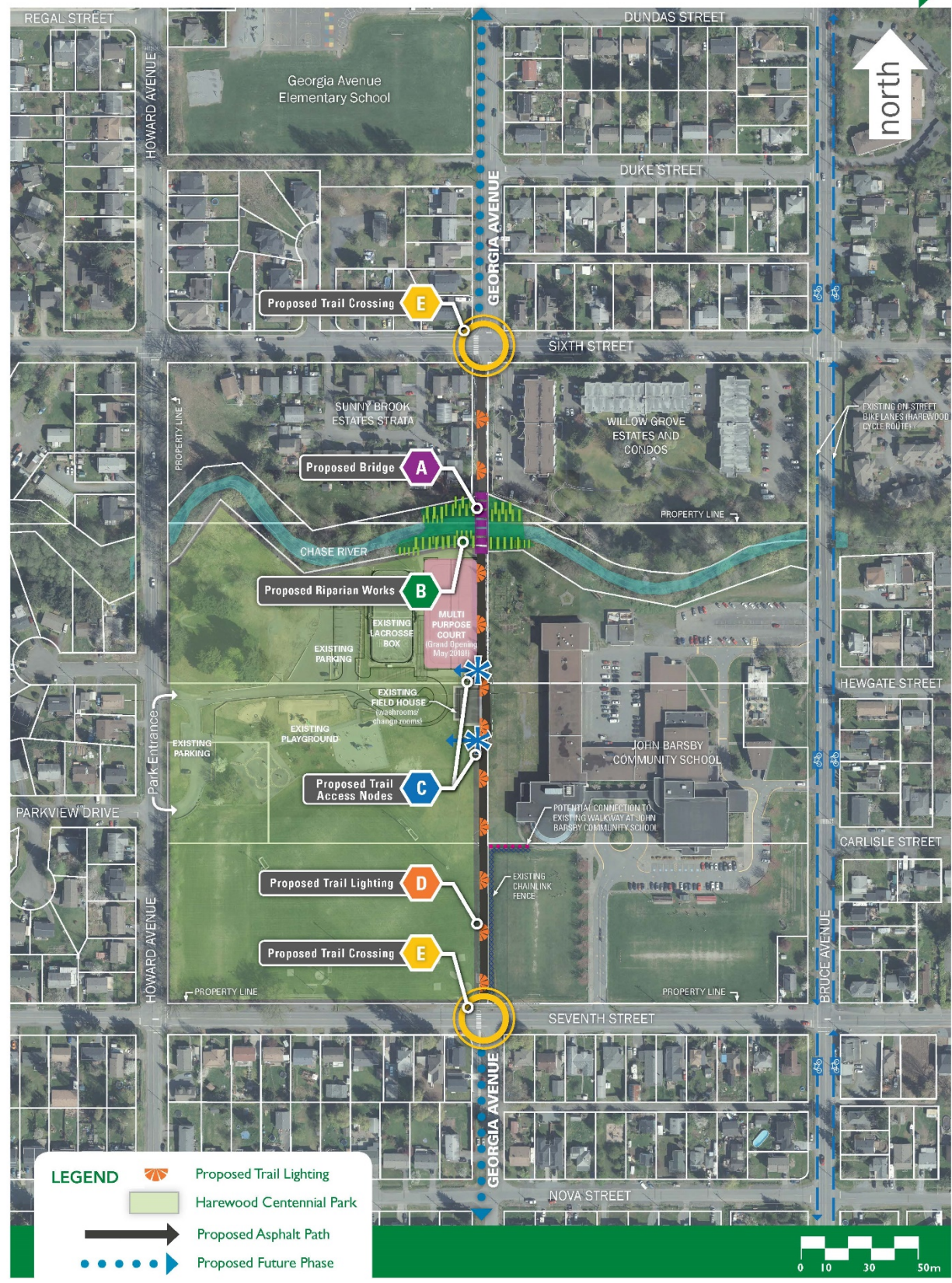
PLEASE COMPLETE A SURVEY BY MAY 13!



Visit www.nanaimo.ca/goto/GeorgiaGreenway for more details

Phase 1 CONCEPT PLAN

GEORGIA GREENWAY
... FOR ALL AGES AND ABILITIES!



The Big Picture

GEORGIA GREENWAY
... FOR ALL AGES AND ABILITIES!

GEORGIA GREENWAY OVERALL PLAN (including future phases)

The Georgia Greenway corridor will span a distance of 3.1 km in total once fully completed.

It will be composed of a combination of off-road paths and low-volume roads, creating a comfortable experience for all ages, abilities, and confidence levels.



Visit www.nanaimo.ca/goto/GeorgiaGreenway for more details