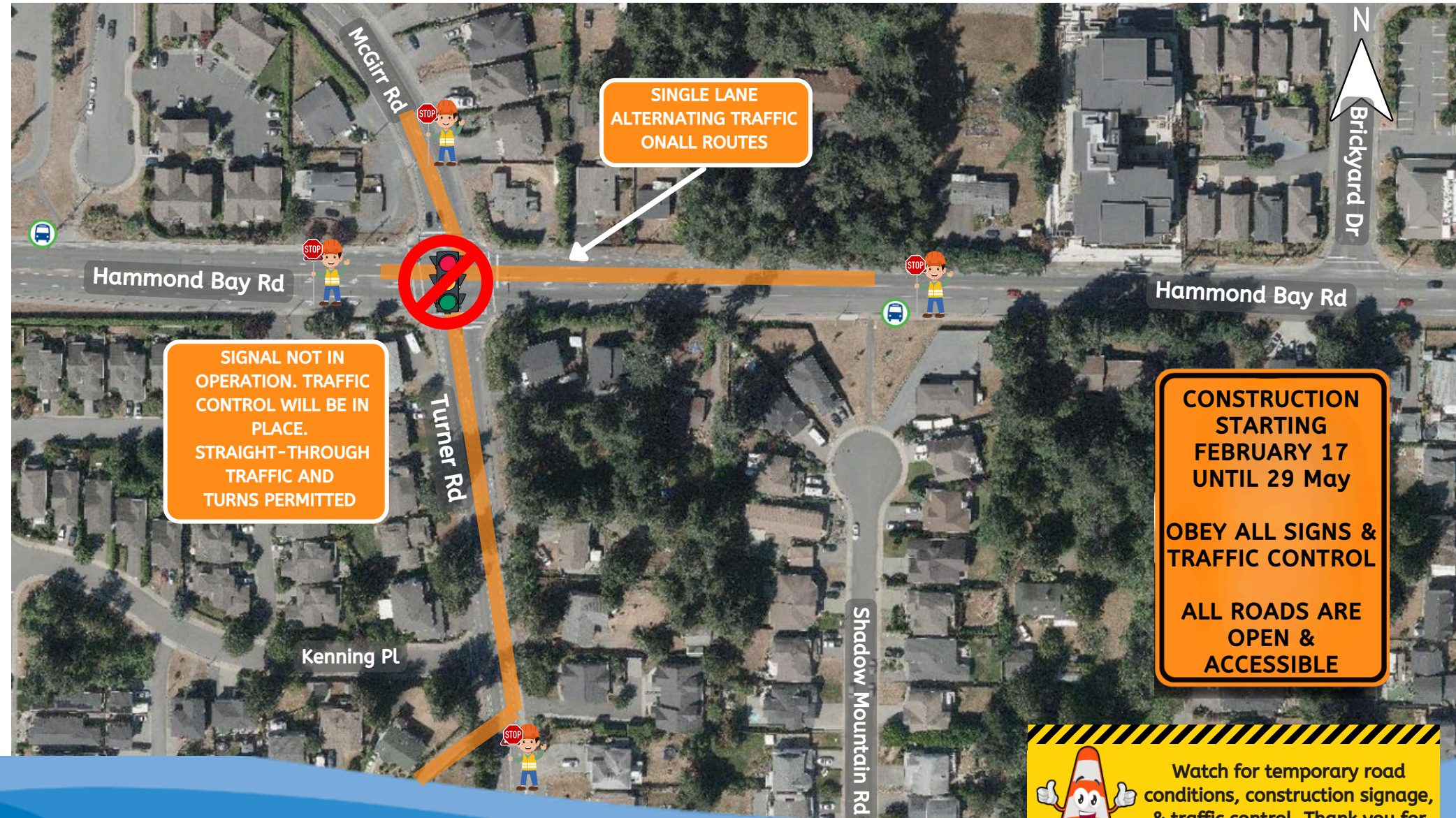




HAMMOND BAY RD & TURNER RD CONSTRUCTION



SINGLE LANE
ALTERNATING TRAFFIC
ON ALL ROUTES

SIGNAL NOT IN
OPERATION. TRAFFIC
CONTROL WILL BE IN
PLACE.
STRAIGHT-THROUGH
TRAFFIC AND
TURNS PERMITTED

CONSTRUCTION
STARTING
FEBRUARY 17
UNTIL 29 May

OBEY ALL SIGNS &
TRAFFIC CONTROL

ALL ROADS ARE
OPEN &
ACCESSIBLE



Watch for temporary road conditions, construction signage, & traffic control. Thank you for your ongoing patience!