



The dispatch office of the Public Works Department on Labieux Road is the nerve centre of operational activities in the City. Working there are **Angela Mowatt** and **Cora White** who have a combined 25 years of experience. There isn't much they don't know about Public Works. When you call the Public Works Hotline you will be speaking with one of these two doyennes! Here are their top five questions and answers about garbage and recycling:



Q. Why can't I put yard waste in my organics bin?

A. Angela says, "Unfortunately we cannot accept yard waste in the kitchen waste bin because the facility that processes our organics is unable to process mixed waste at this time."

Q. How much recycling can I place out for collection?

A. Cora says, "There is no limit to the amount of recycling you can place out for collection! Please contain it within either yellow bags (available from City facilities) or clearly marked rigid containers. If you live in Central Nanaimo when automated collection begins in the fall you will receive a blue cart for your recyclables. Please remember to rinse your recyclables."

Q. What can I do with grocery bags?

A. Angela says, "Grocery bags cannot be placed in the curbside recycling because they cause lots of problems at the Materials Recovery Facility (MRF) where recycling is sorted. You are encouraged to take them to a local recycling depot but if you can't make it they can be placed in your garbage can. Have you considered switching to reusable bags?"

Q. Why did my garbage can get tagged as oversized?

A. Cora says, "For safety reasons staff are not able to collect loose waste from cans larger than 77 litres. Any garbage presented in a larger can must be placed in a single standard sized bag so the collector can lift the bag out of the can without lifting the can. These rules might seem picky but we have to look after our Refuse Collectors who can lift 1,400 cans a day for a total weight of 5 tonnes."

Q. What do I do with my pet waste?

A. Angela says, "Pet waste is not accepted in the green bin or your garbage can. Pet owners can choose to either take it to the landfill themselves, hire a private company to collect it, flush it down the toilet (no bags or litter) or purchase an at home pet waste disposal system that breaks down poop into the soil."

TRASH TALK

GARBAGE, RECYCLING AND GREEN BIN PROGRAM NEWS

WAIT!



Don't put that in your recycling!

Are you an avid recycler? Recycling feels great, doesn't it? It's one of the easiest ways we can do our bit for the environment...but WAIT! Are you "over cycling"?

Up to 7% of the stuff put out for recycling in Nanaimo is not actually accepted material. This causes big problems at the sorting facility and could even resort in a fine for the City.

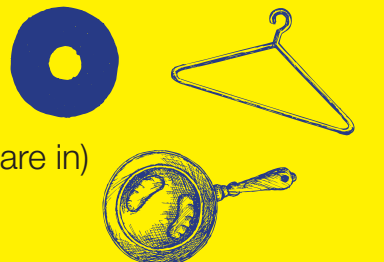
Are you committing one of these recycling no-no's?

- "Wishful Recycling"**- You know an item isn't accepted at the curb, can't make it to the depot, and you don't want to put it in the garbage so you think, *"I'll just slip it into the yellow bag. It all goes to the same place, right?"* **WRONG!** By placing depot items in your curbside bags, you are contaminating the load. Glass breaks, plastic bags tangle and Styrofoam crumbles into tiny pieces causing contamination which often means the whole load goes to the landfill. These items need to be handled separately. That's why we ask that you take them to the depot or place them in your garbage if you can't make it.
- "Confused Recycling"**- You may just not be aware of some of the things that can't be recycled at home. Just about all paper and packing items are recyclable. Check out www.nanaimo.ca for a full guide of what's in and out.



Common sources of contamination:

- Plastic products** (e.g. broken toys, coat hangers, CDs)
- Depot items** (e.g. glass, Styrofoam, plastic bags)
- Books** (books are out, but magazines, catalogues and phone books are in)
- Scrap metal** (e.g. pans, car parts)
- Weird stuff** - we've seen it all from cannon balls to animal carcasses!



Public Works: 250.758.5222

Public.Worksinfo@nanaimo.ca

Curbside Recycling: 250.758.5360





Scooping your dog's poop isn't just a courtesy for those walking behind you. It is the healthy and environmentally sound thing to do...and it's the law. With over 8,000 licensed dogs in Nanaimo, dealing with dog waste is a big deal.

Here are some tips for the responsible dog owner:



- Bring it** - Always bring a plastic bag when you walk your dog.
- Scoop it** - Use the bag as a glove to pick up the waste.
- Dispose of it Responsibly** - Do not throw bags into trees or on the sides of a trail. This unpleasant littering is a health hazard for humans and the environment. Properly dispose of pet waste.

Pet waste disposal options

- Bin it** - Pet waste is acceptable in City park garbage cans; not in your household garbage.
- Flush it** - (not the bag!) down the toilet.
- Compost it** - Dog waste composters are available for your garden.
- Call it** - Call a local doggie waste collection service.

When FREE isn't really free!

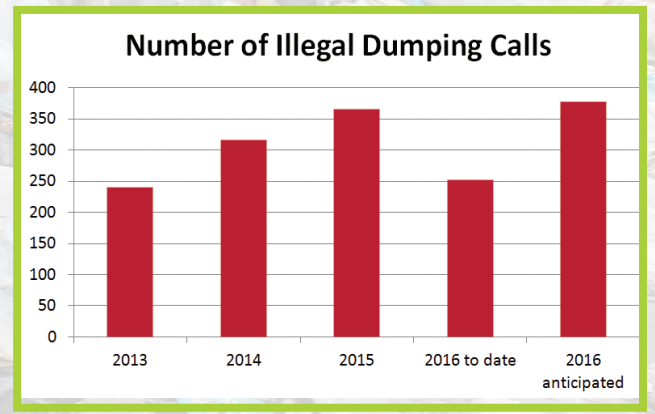
We have seen a 50% increase in illegal dumping in Nanaimo since 2013. Last year staff attended exactly 365 calls for illegal dumping. The worrying part of this trend is that we are starting to see much of this dumping in City neighbourhoods rather than the more typical remote dump sites.

On an increasing basis we find that items, including couches, mattresses and old barbecues are placed outside a property with a sign saying "free". Typically, these items linger, get wet, and nobody wants them. This is when other items begin to be added to the pile of dumping.

This situation costs over \$20,000 to clean up annually. Last year we landfilled almost 13,000 kgs of illegally dumped material and spent about 1,500 hours working on these issues.

Here's what you can do to help the issue:

- Please don't place free items outside your home (except for on our "Reuse Rendezvous" city wide swap meet weekend held in April every year).
- Notify our Bylaw Department when you see a "Free" item outside a neighbour's address.
- Dispose of your large items properly. If the item is still usable, you could hold on to it until Reuse Rendezvous, donate it to a thrift store (some of whom pick up), take it to the landfill or have a junk company come and collect it.



What is Garbage, Anyway?

Curbside recycling and composting services are so comprehensive that you can divert about **80%** of your waste from landfill by sorting correctly at home. If you include trips to recycling depots, that number increases to **95%** or more!

So, what actually is garbage? Well, not much! Here are some examples of what goes in your garbage can:

AFTER COMPOSTING & RECYCLING

What is left in the garbage?

- Plastic cling wrap & plastic snack bags
- Foil lined cardboard
- Chip bags & candy wrappers
- Dryer lint & dryer sheets
- Diapers, baby wipes & personal hygiene items
- Plastic cutlery & straws
- Broken ceramics & broken glass
- Styrofoam
- Film plastic
- Glass bottles
- Elastic bands, twist ties, 6-pack rings
- Broken toys / objects
- Worn-out clothing & shoes
- Absorbent pads from meat trays

These items can be recycled for free at a recycling depot.
If you are unable to make it to a depot, they can also be included in the garbage.

Anything compostable or recyclable is NOT permitted in the garbage.

to Recycling Depot **to Landfill** www.Nanaimo.ca/Garbage

The average household recycles and composts 64% of their waste. It's good, but we can do better.



Around 1000 tonnes of waste is needlessly land filled in Nanaimo every year.