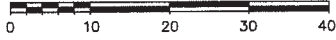


SKETCH PLAN TO ACCOMPANY FORM "P"
 NINE PHASE STRATA DEVELOPMENT
 LOT A, SECTION 1, NANAIMO DISTRICT,
 PLAN EPP39000

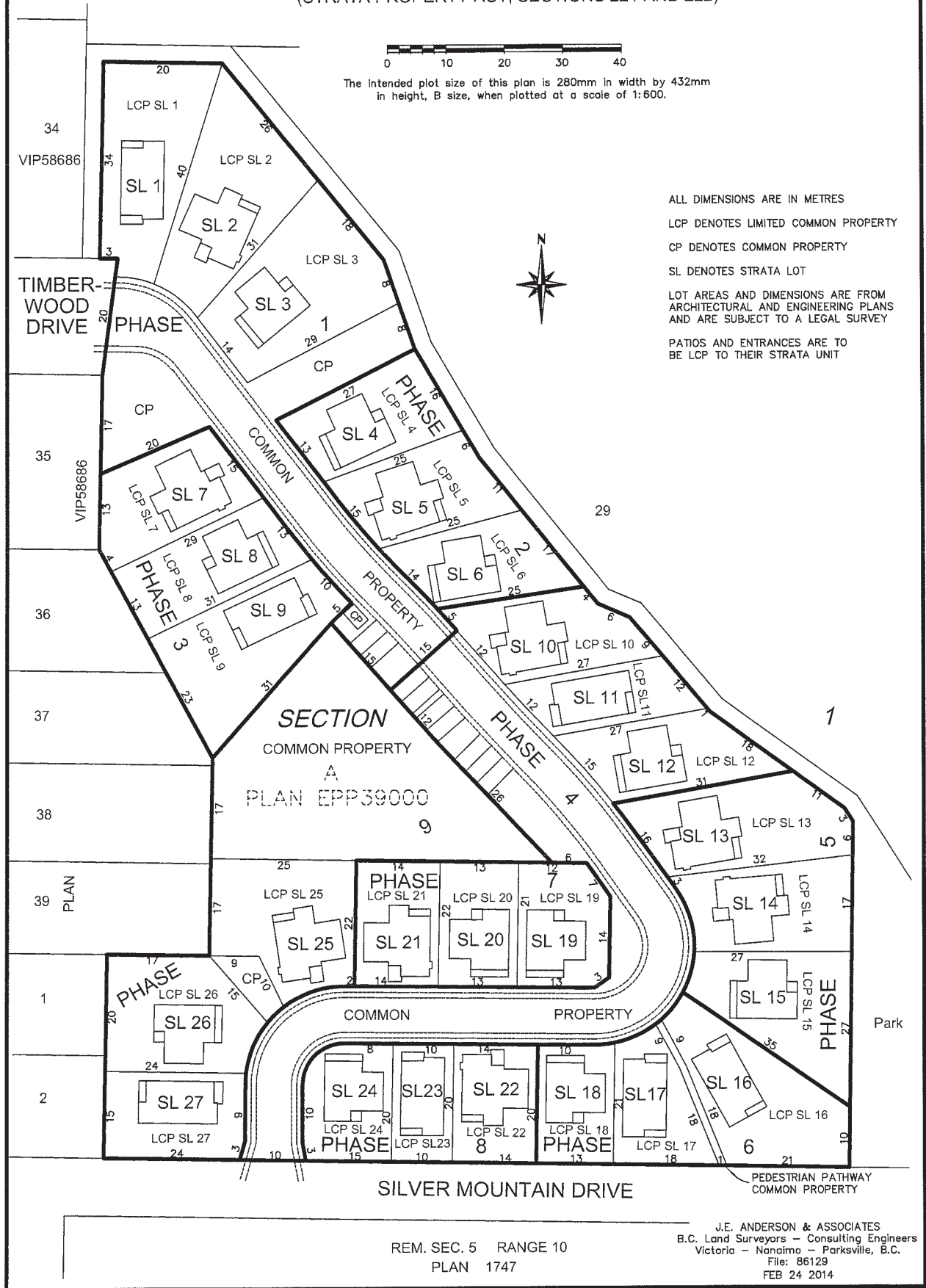
(STRATA PROPERTY ACT, SECTIONS 221 AND 222)



The intended plot size of this plan is 280mm in width by 432mm in height, B size, when plotted at a scale of 1:600.



ALL DIMENSIONS ARE IN METRES
 LCP DENOTES LIMITED COMMON PROPERTY
 CP DENOTES COMMON PROPERTY
 SL DENOTES STRATA LOT
 LOT AREAS AND DIMENSIONS ARE FROM ARCHITECTURAL AND ENGINEERING PLANS AND ARE SUBJECT TO A LEGAL SURVEY
 PATIOS AND ENTRANCES ARE TO BE LCP TO THEIR STRATA UNIT



REM. SEC. 5 RANGE 10
 PLAN 1747

J.E. ANDERSON & ASSOCIATES
 B.C. Land Surveyors - Consulting Engineers
 Victoria - Nanaimo - Parksville, B.C.
 File: 86129
 FEB 24 2014