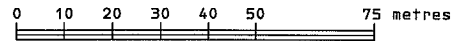


**PHASED STRATA PLAN OF LOT 3, DISTRICT LOT 20,
WELLINGTON DISTRICT, PLAN VIP79506.**

BCGS 92F.030

SCALE 1: 1000



THE INTENDED PLOT SIZE OF THIS PLAN IS
432mm IN WIDTH BY 280mm IN HEIGHT (B SIZE)
WHEN PLOTTED AT A SCALE OF 1: 1000

LEGEND

- CONTROL MONUMENT FOUND.
- STANDARD IRON POST FOUND.
- STANDARD LEAD PLUG FOUND.
- SL DENOTES STRATA LOT.
- CP DENOTES COMMON PROPERTY.
- LCP DENOTES LIMITED COMMON PROPERTY.
- PT DENOTES PART.

INTEGRATED SURVEY AREA No. 20,
CITY OF NANAIMO. NAD83 (CSRS)

GRID BEARINGS ARE DERIVED FROM
OBSERVATIONS BETWEEN GEODETIC
CONTROL MONUMENTS 79H9212 AND
79H9408.

THE UTM COORDINATES AND ESTIMATED HORIZONTAL
POSITIONAL ACCURACY HAVE BEEN DERIVED FROM
CONVENTIONAL SURVEY OBSERVATIONS TO GEODETIC
CONTROL MONUMENTS 79H9212 AND 79H9408.

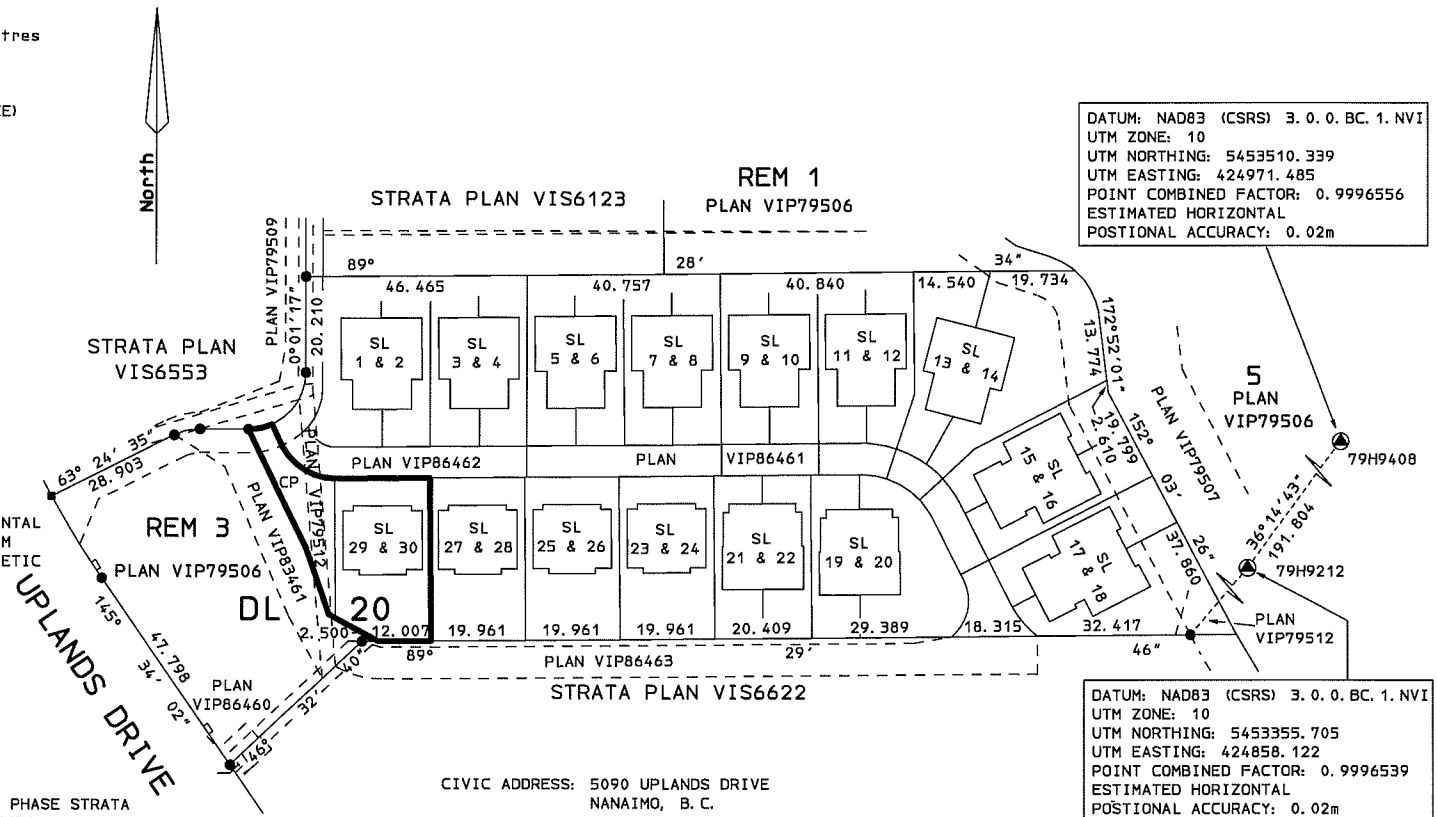
THIS PLAN SHOWS HORIZONTAL
GROUND-LEVEL DISTANCES UNLESS
OTHERWISE SPECIFIED. TO
COMPUTE GRID DISTANCES, MULTIPLY
GROUND-LEVEL DISTANCES BY THE
AVERAGE COMBINED FACTOR OF 0.9996500
WHICH HAS BEEN DERIVED FROM AN AVERAGE
OF SURVEY MONUMENTS WITHIN
INTEGRATED SURVEY AREA No. 20.

THIS PLAN IS PHASE THIRTEEN OF A SIXTEEN PHASE STRATA
PLAN UNDER SECTION 224 OF THE STRATA PROPERTY
ACT LYING WITHIN THE JURISDICTION OF THE
APPROVING OFFICER FOR THE CITY OF NANAIMO.

Williamson & Associates
Professional Surveyors
3088 Barons Road
Nanaimo B.C. V9T 4B5
FILE: 08220D01

SHEET 01 OF 07 SHEETS

**STRATA PLAN VIS6326
PHASE 13**



DATUM: NAD83 (CSRS) 3.0.0.BC.1.NVI
UTM ZONE: 10
UTM NORTHING: 5453510.339
UTM EASTING: 424971.485
POINT COMBINED FACTOR: 0.9996556
ESTIMATED HORIZONTAL
POSITIONAL ACCURACY: 0.02m

DATUM: NAD83 (CSRS) 3.0.0.BC.1.NVI
UTM ZONE: 10
UTM NORTHING: 5453355.705
UTM EASTING: 424858.122
POINT COMBINED FACTOR: 0.9996539
ESTIMATED HORIZONTAL
POSITIONAL ACCURACY: 0.02m

CIVIC ADDRESS: 5090 UPLANDS DRIVE
NANAIMO, B.C.

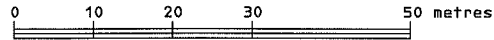
THE BUILDINGS SHOWN ON THIS STRATA PLAN ARE
WITHIN THE EXTERNAL BOUNDARIES OF THE LAND
THAT IS THE SUBJECT OF THE STRATA PLAN.

THE BUILDINGS INCLUDED IN THIS STRATA PLAN
HAVE NOT AS OF FEBRUARY 10, 2015, BEEN
PREVIOUSLY OCCUPIED.

THIS PLAN LIES WITHIN THE REGIONAL DISTRICT
OF NANAIMO AND THE CITY OF NANAIMO.

THE FIELD SURVEY REPRESENTED BY THIS PLAN WAS
COMPLETED ON THE 10th DAY OF FEBRUARY, 2015.
BRIAN S HENNING, BCLS 672

SCALE 1: 600



THE INTENDED PLOT SIZE OF THIS PLAN IS 432mm IN WIDTH BY 280mm IN HEIGHT (B SIZE) WHEN PLOTTED AT A SCALE OF 1: 600

NOTES:

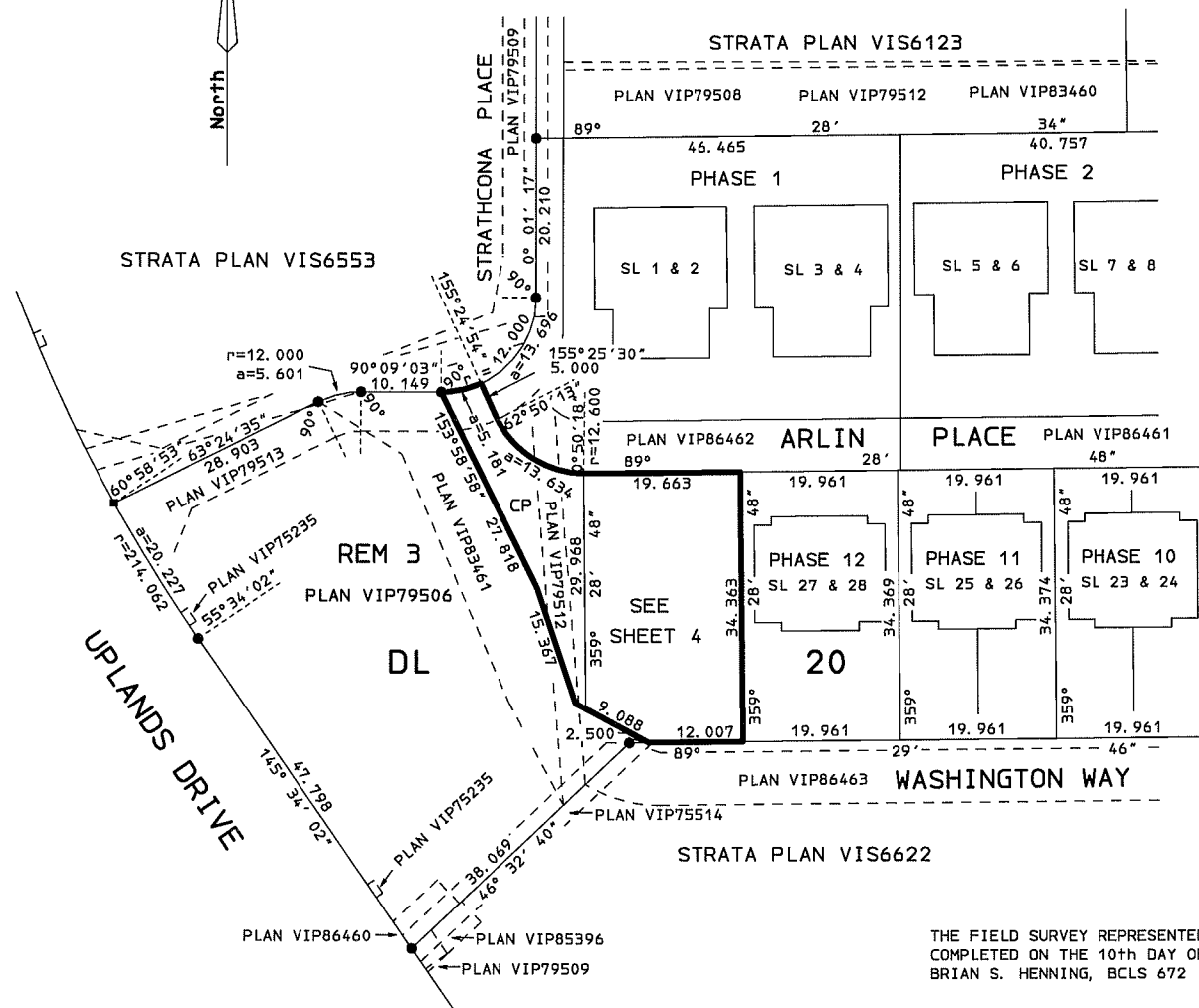
ALL STRATA LOT BOUNDARIES ARE DEFINED BY THE CENTER OF THE WALLS UNLESS SHOWN OTHERWISE.

ALL PATIOS AND DECKS ARE DEFINED AS TO HEIGHT BY THE CENTER OF THE FLOOR ABOVE OR ITS EXTENSIONS OR WHERE THERE IS NO FLOOR ABOVE BY THE AVERAGE HEIGHT OF A STRATA LOT WITHIN THE SAME BUILDING UNLESS OTHERWISE INDICATED.

BEARINGS OF ALL BUILDING WALLS DEFLECT BY EVEN MULTIPLES OF 90° FROM THE GIVEN REFERENCE BEARING UNLESS OTHERWISE INDICATED.

SHEET 02 OF 07 SHEETS

STRATA PLAN VIS6326 PHASE 13

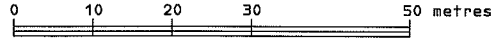


SEE SHEET 3

Williamson & Associates
Professional Surveyors
3088 Barons Road
Nanaimo B.C. V9T 4B5
FILE: 08220D02

THE FIELD SURVEY REPRESENTED BY THIS PLAN WAS COMPLETED ON THE 10th DAY OF FEBRUARY, 2015.
BRIAN S. HENNING, BCLS 672

SCALE 1: 600



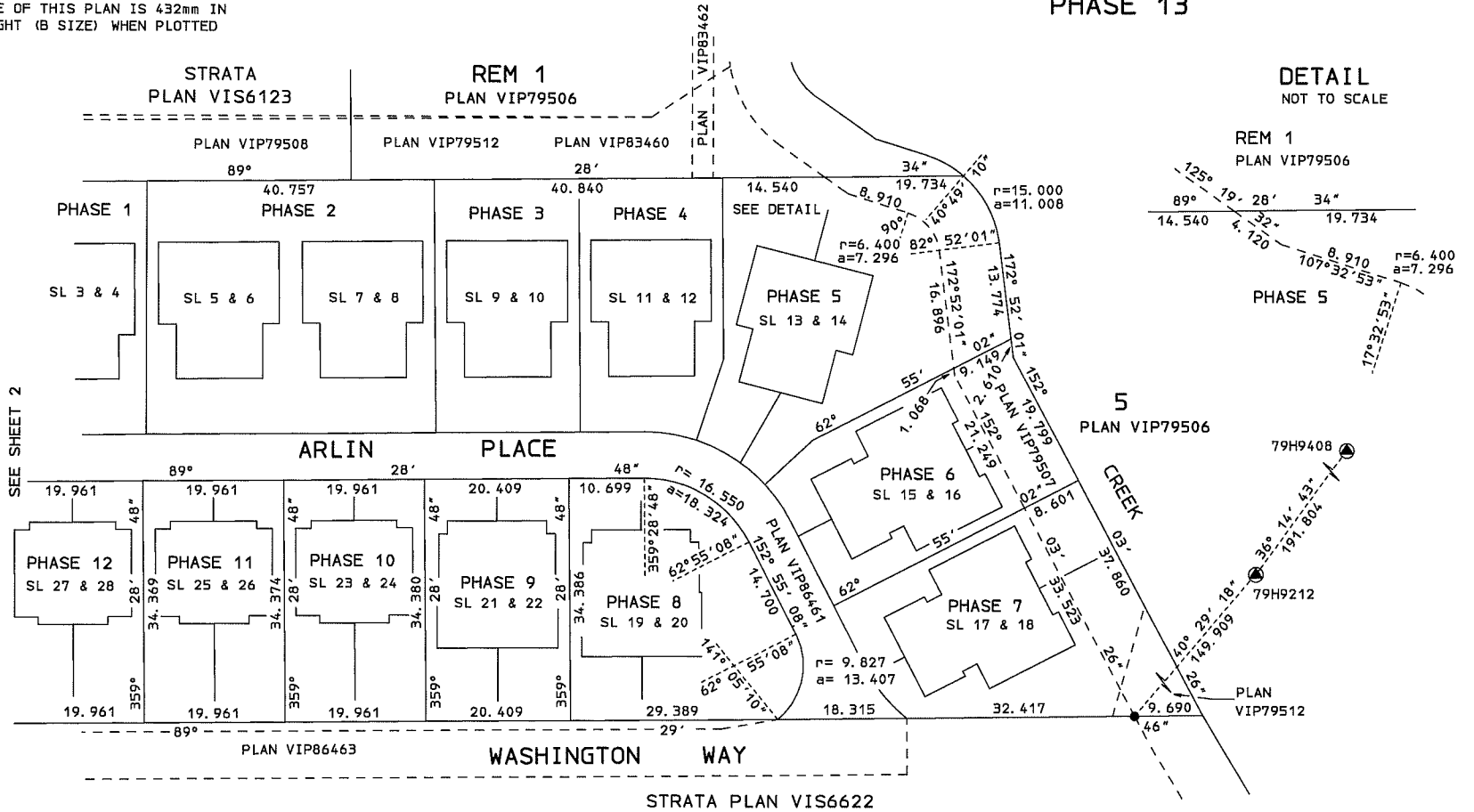
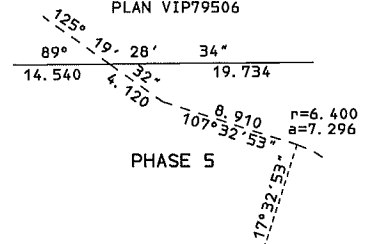
THE INTENDED PLOT SIZE OF THIS PLAN IS 432mm IN WIDTH BY 280mm IN HEIGHT (B SIZE) WHEN PLOTTED AT A SCALE OF 1: 600

SHEET 03 OF 07 SHEETS

STRATA PLAN VIS6326 PHASE 13

DETAIL
NOT TO SCALE

REM 1
PLAN VIP79506



Williamson & Associates
Professional Surveyors
3088 Barons Road
Nanaimo B.C. V9T 4B5
FILE: 08220D03

THE FIELD SURVEY REPRESENTED BY THIS PLAN WAS COMPLETED ON THE 10th DAY OF FEBRUARY, 2015.
BRIAN S. HENNING, BCLS 672

**PLAN OF PART OF STRATA LOTS 29 AND 30,
LOWER FLOOR**

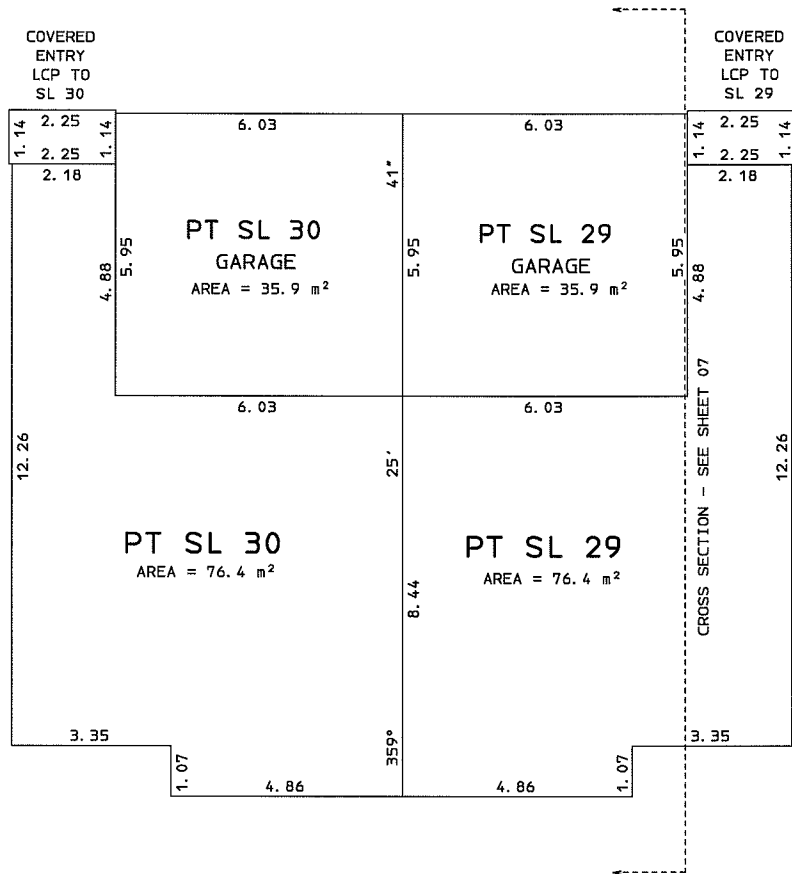
SHEET 05 OF 07 SHEETS

**STRATA PLAN VIS6326
PHASE 13**

SCALE 1: 100



THE INTENDED PLOT SIZE OF THIS PLAN IS 432mm IN WIDTH BY 280mm IN HEIGHT (B SIZE) WHEN PLOTTED AT A SCALE OF 1: 100



Williamson & Associates
Professional Surveyors
3088 Barons Road
Nanaimo B.C. V9T 4B5
FILE: 08220D05

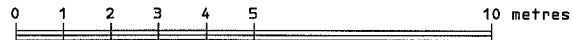
THE FIELD SURVEY REPRESENTED BY THIS PLAN WAS COMPLETED ON THE 10th DAY OF FEBRUARY, 2015.
BRIAN S. HENNING, BCLS 672

**PLAN OF PART OF STRATA LOTS 29 AND 30,
MAIN FLOOR**

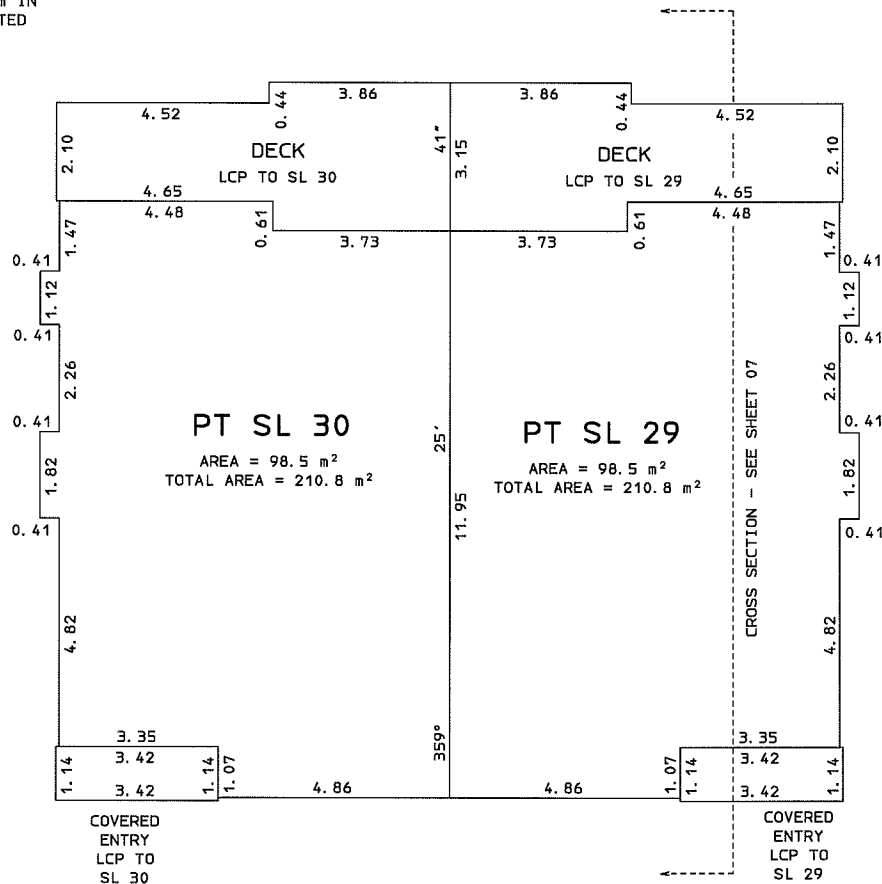
SHEET 06 OF 07 SHEETS

**STRATA PLAN VIS6326
PHASE 13**

SCALE 1: 100



THE INTENDED PLOT SIZE OF THIS PLAN IS 432mm IN WIDTH BY 280mm IN HEIGHT (B SIZE) WHEN PLOTTED AT A SCALE OF 1: 100



Williamson & Associates
 Professional Surveyors
 3088 Barons Road
 Nanaimo B.C. V9T 4B5
 FILE: 08220D06

THE FIELD SURVEY REPRESENTED BY THIS PLAN WAS COMPLETED ON THE 10th DAY OF FEBRUARY, 2015.
 BRIAN S. HENNING, BCLS 672

CROSS SECTION

SHEET 07 OF 07 SHEETS

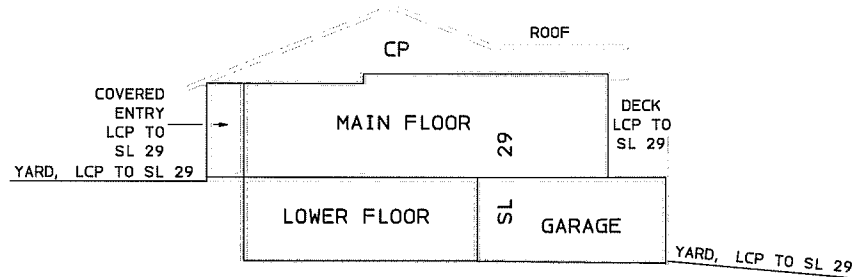
STRATA PLAN VIS6326

PHASE 13

SCALE 1: 150



THE INTENDED PLOT SIZE OF THIS PLAN IS 432mm IN WIDTH BY 280mm IN HEIGHT (B SIZE) WHEN PLOTTED AT A SCALE OF 1: 150



Williamson & Associates
Professional Surveyors
3088 Barons Road
Nanaimo B.C. V9T 4B5
FILE: 08220D07

THE FIELD SURVEY REPRESENTED BY THIS PLAN
COMPLETED ON THE 10th DAY OF FEBRUARY, 2015.
BRIAN S. HENNING, BCLS 672