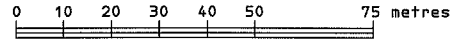


**PHASED STRATA PLAN OF LOT 3, DISTRICT LOT 20,  
WELLINGTON DISTRICT, PLAN VIP79506.**

BCGS 92F.030

SCALE 1:1000



THE INTENDED PLOT SIZE OF THIS PLAN IS 432mm IN WIDTH BY 280mm IN HEIGHT (B SIZE) WHEN PLOTTED AT A SCALE OF 1:1000

**LEGEND**

- CONTROL MONUMENT FOUND.
- STANDARD IRON POST FOUND.
- STANDARD LEAD PLUG FOUND.
- SL DENOTES STRATA LOT.
- CP DENOTES COMMON PROPERTY.
- LCP DENOTES LIMITED COMMON PROPERTY.
- PT DENOTES PART.

INTEGRATED SURVEY AREA No. 20, CITY OF NANAIMO. NAD83 (CSRS)

GRID BEARINGS ARE DERIVED FROM OBSERVATIONS BETWEEN GEODETIC CONTROL MONUMENTS 79H9212 AND 79H9408.

THE UTM COORDINATES AND ESTIMATED HORIZONTAL POSITIONAL ACCURACY HAVE BEEN DERIVED FROM CONVENTIONAL SURVEY OBSERVATIONS TO GEODETIC CONTROL MONUMENTS 79H9212 AND 79H9408.

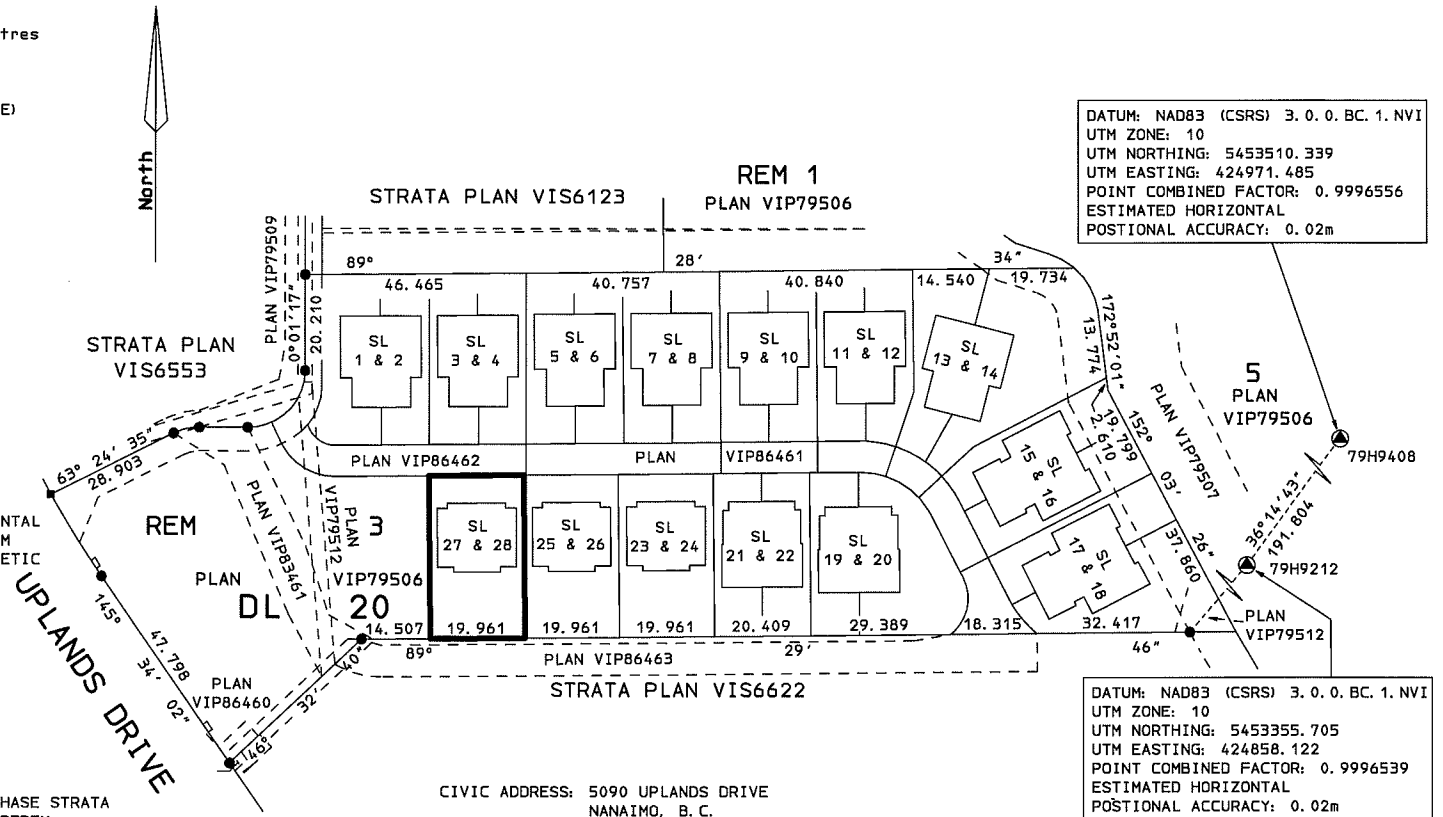
THIS PLAN SHOWS HORIZONTAL GROUND-LEVEL DISTANCES UNLESS OTHERWISE SPECIFIED. TO COMPUTE GRID DISTANCES, MULTIPLY GROUND-LEVEL DISTANCES BY THE AVERAGE COMBINED FACTOR OF 0.9996500 WHICH HAS BEEN DERIVED FROM AN AVERAGE OF SURVEY MONUMENTS WITHIN INTEGRATED SURVEY AREA No. 20.

THIS PLAN IS PHASE TWELVE OF A SIXTEEN PHASE STRATA PLAN UNDER SECTION 224 OF THE STRATA PROPERTY ACT LYING WITHIN THE JURISDICTION OF THE APPROVING OFFICER FOR THE CITY OF NANAIMO.

**Williamson & Associates**  
Professional Surveyors  
3088 Barons Road  
Nanaimo B.C. V9T 4B5  
FILE: 08220C01

SHEET 01 OF 07 SHEETS

**STRATA PLAN VIS6326  
PHASE 12**



DATUM: NAD83 (CSRS) 3. 0. 0. BC. 1. NVI  
UTM ZONE: 10  
UTM NORTHING: 5453510.339  
UTM EASTING: 424971.485  
POINT COMBINED FACTOR: 0.9996556  
ESTIMATED HORIZONTAL  
POSITIONAL ACCURACY: 0.02m

DATUM: NAD83 (CSRS) 3. 0. 0. BC. 1. NVI  
UTM ZONE: 10  
UTM NORTHING: 5453355.705  
UTM EASTING: 424858.122  
POINT COMBINED FACTOR: 0.9996539  
ESTIMATED HORIZONTAL  
POSITIONAL ACCURACY: 0.02m

CIVIC ADDRESS: 5090 UPLANDS DRIVE  
NANAIMO, B.C.

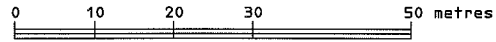
THE BUILDINGS SHOWN ON THIS STRATA PLAN ARE WITHIN THE EXTERNAL BOUNDARIES OF THE LAND THAT IS THE SUBJECT OF THE STRATA PLAN.

THE BUILDINGS INCLUDED IN THIS STRATA PLAN HAVE NOT AS OF FEBRUARY 10, 2015, BEEN PREVIOUSLY OCCUPIED.

THIS PLAN LIES WITHIN THE REGIONAL DISTRICT OF NANAIMO AND THE CITY OF NANAIMO.

THE FIELD SURVEY REPRESENTED BY THIS PLAN WAS COMPLETED ON THE 10th DAY OF FEBRUARY, 2015. BRIAN S HENNING, BCLS 672

SCALE 1: 600



THE INTENDED PLOT SIZE OF THIS PLAN IS 432mm IN WIDTH BY 280mm IN HEIGHT (B SIZE) WHEN PLOTTED AT A SCALE OF 1: 600

NOTES:

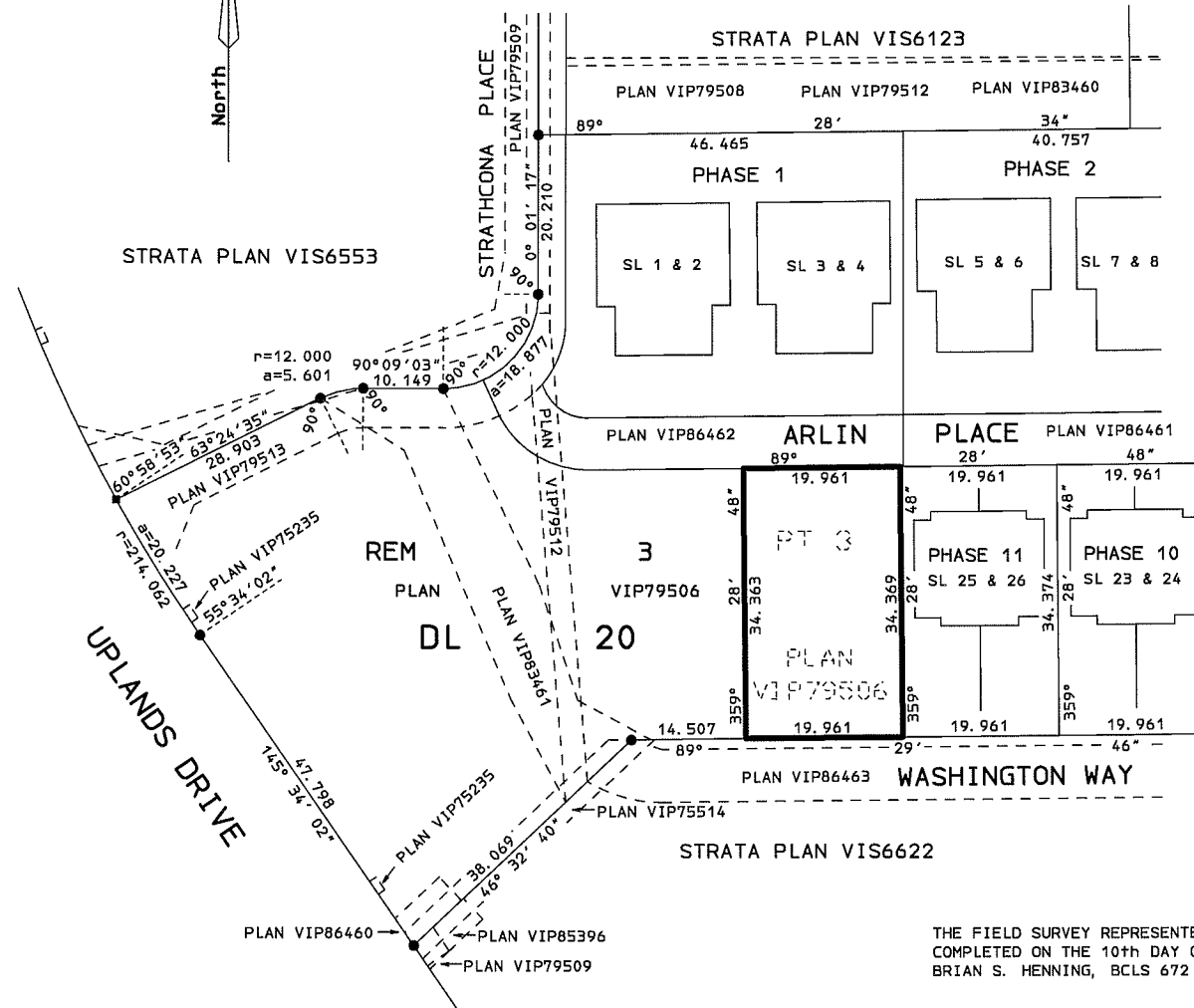
ALL STRATA LOT BOUNDARIES ARE DEFINED BY THE CENTER OF THE WALLS, FLOORS AND CEILINGS UNLESS SHOWN OTHERWISE.

ALL PATIOS AND DECKS ARE DEFINED AS TO HEIGHT BY THE CENTER OF THE FLOOR ABOVE OR ITS EXTENSIONS OR WHERE THERE IS NO FLOOR ABOVE BY THE AVERAGE HEIGHT OF A STRATA LOT WITHIN THE SAME BUILDING UNLESS OTHERWISE INDICATED.

BEARINGS OF ALL BUILDING WALLS DEFLECT BY EVEN MULTIPLES OF 90° FROM THE GIVEN REFERENCE BEARING UNLESS OTHERWISE INDICATED.

SHEET 02 OF 07 SHEETS

STRATA PLAN VIS6326  
PHASE 12

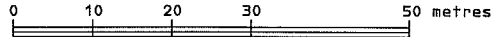


SEE SHEET 3

**Williamson & Associates**  
Professional Surveyors  
3088 Barons Road  
Nanaimo B.C. V9T 4B5  
FILE: 08220C02

THE FIELD SURVEY REPRESENTED BY THIS PLAN WAS COMPLETED ON THE 10th DAY OF FEBRUARY, 2015.  
BRIAN S. HENNING, BCLS 672

SCALE 1: 600



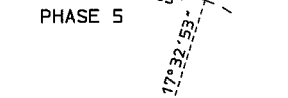
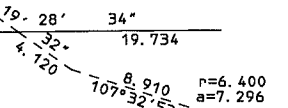
THE INTENDED PLOT SIZE OF THIS PLAN IS 432mm IN WIDTH BY 280mm IN HEIGHT (B SIZE) WHEN PLOTTED AT A SCALE OF 1: 600

SHEET 03 OF 07 SHEETS

STRATA PLAN VIS6326  
PHASE 12

DETAIL  
NOT TO SCALE

REM 1  
PLAN VIP79506

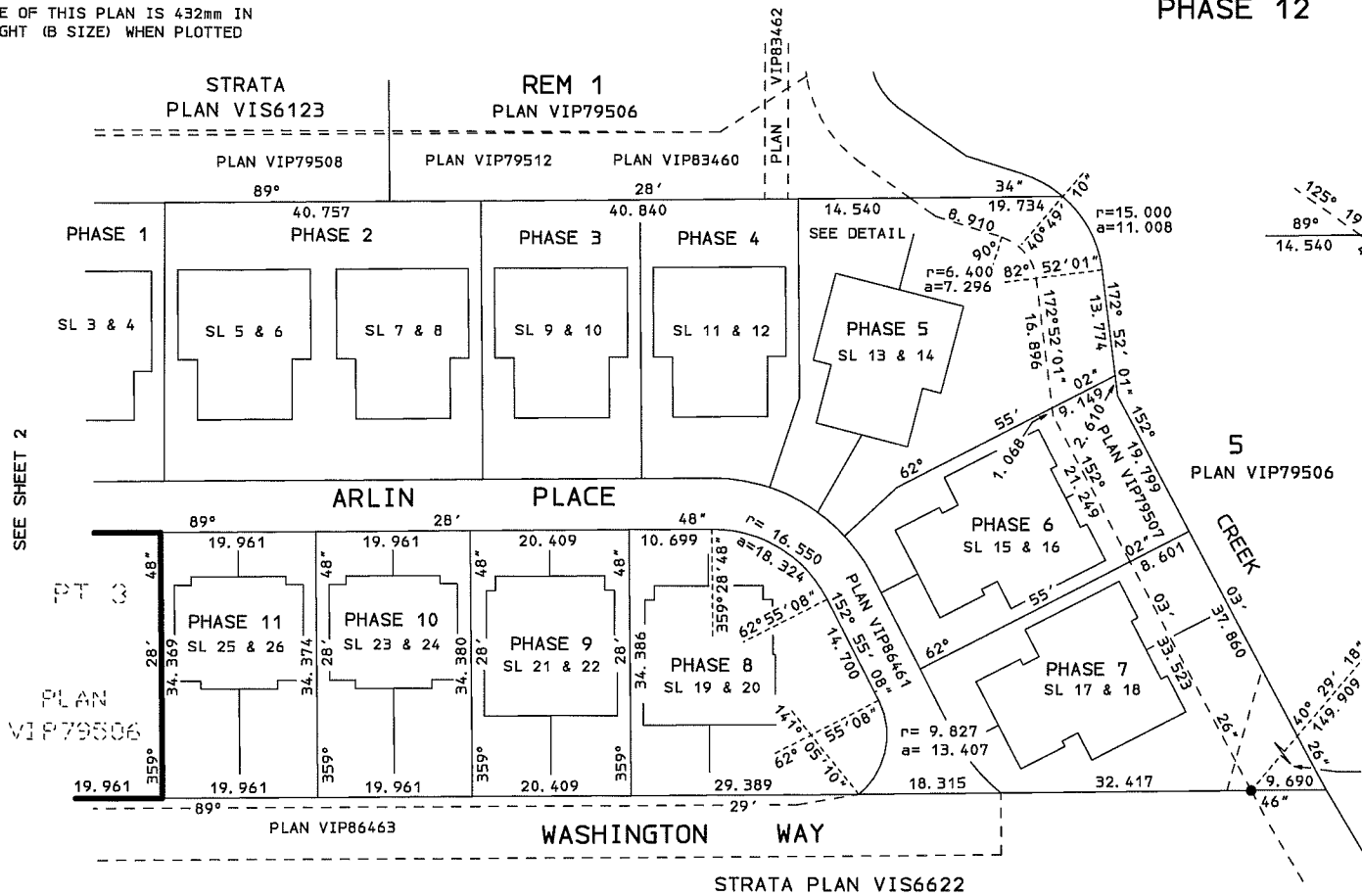


5  
PLAN VIP79506

79H9408

79H9212

PLAN  
VIP79512



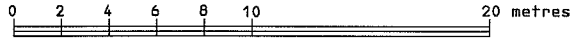
SEE SHEET 2

PLAN  
VIP79506

**Williamson & Associates**  
Professional Surveyors  
3088 Barons Road  
Nanaimo B.C. V9T 4B5  
FILE: 08220C03

THE FIELD SURVEY REPRESENTED BY THIS PLAN WAS COMPLETED ON THE 10th DAY OF FEBRUARY, 2015.  
BRIAN S. HENNING, BCLS 672

SCALE 1: 200



THE INTENDED PLOT SIZE OF THIS PLAN IS 432mm IN WIDTH BY 280mm IN HEIGHT (B SIZE) WHEN PLOTTED AT A SCALE OF 1: 200

SHEET 04 OF 07 SHEETS

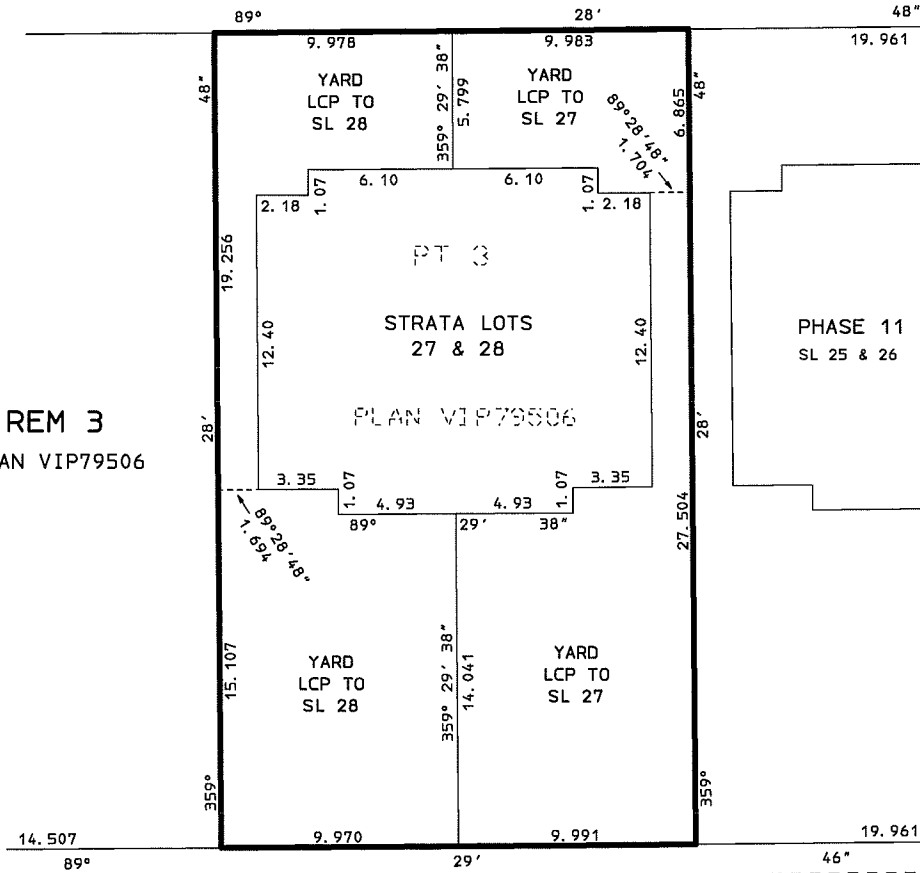
# ARLIN PLACE COMMON PROPERTY

## STRATA PLAN VIS6326 PHASE 12

TIES TO BUILDINGS ARE TO CONCRETE FOUNDATIONS



REM 3  
PLAN VIP79506



**Williamson & Associates**  
Professional Surveyors  
3088 Barons Road  
Nanaimo B.C. V9T 4B5  
FILE: 08220C04

**WASHINGTON WAY**  
PLAN VIP86463

STRATA PLAN VIS6622

THE FIELD SURVEY REPRESENTED BY THIS PLAN WAS COMPLETED ON THE 10th DAY OF FEBRUARY, 2015.  
BRIAN S. HENNING, BCLS 672

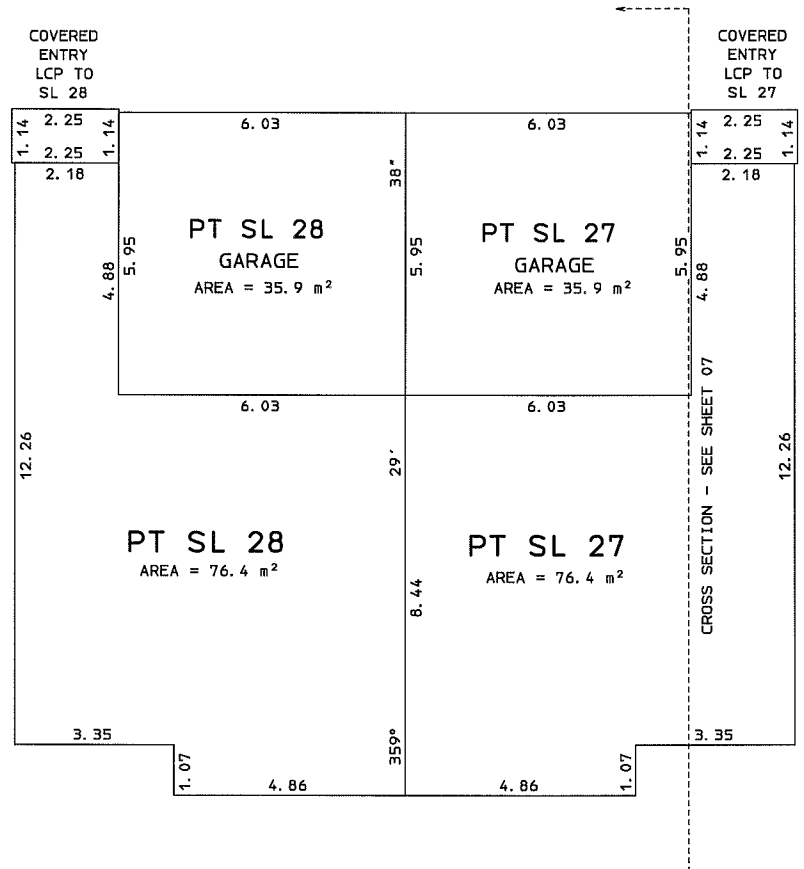
**PLAN OF PART OF STRATA LOTS 27 AND 28,  
LOWER FLOOR**

SHEET 05 OF 07 SHEETS  
**STRATA PLAN VIS6326  
PHASE 12**

**SCALE 1: 100**



THE INTENDED PLOT SIZE OF THIS PLAN IS 432mm IN WIDTH BY 280mm IN HEIGHT (B SIZE) WHEN PLOTTED AT A SCALE OF 1: 100



**Williamson & Associates**  
Professional Surveyors  
3088 Barons Road  
Nanaimo B.C. V9T 4B5  
FILE: 08220C05

THE FIELD SURVEY REPRESENTED BY THIS PLAN WAS COMPLETED ON THE 10th DAY OF FEBRUARY, 2015.  
BRIAN S. HENNING, BCLS 672

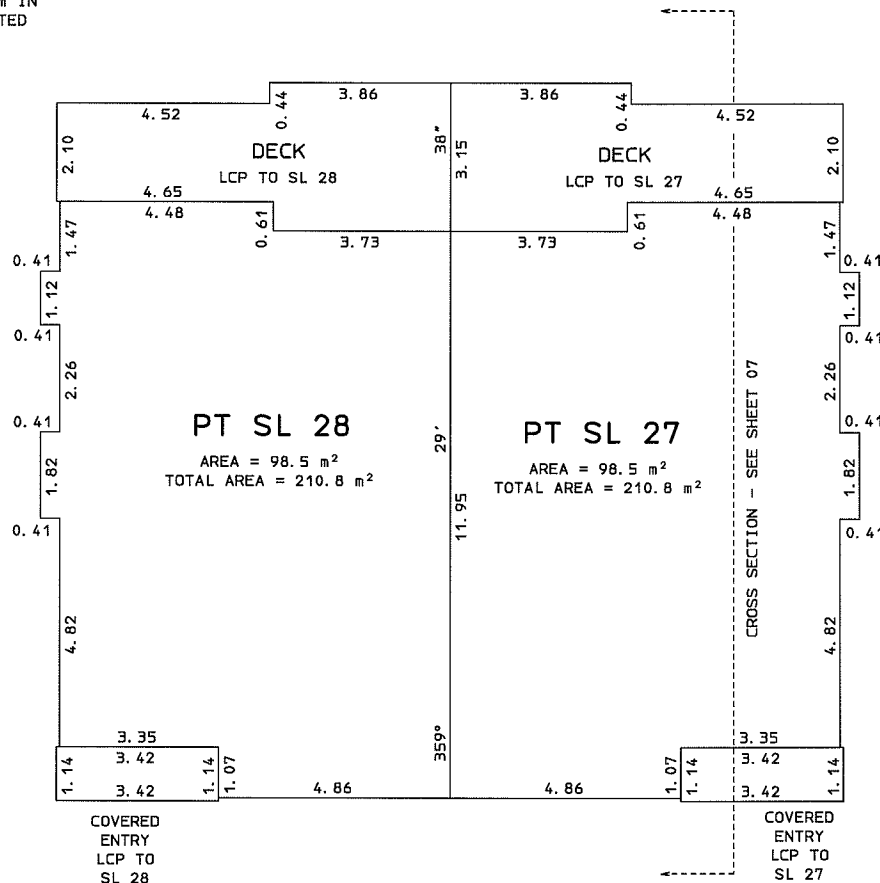
**PLAN OF PART OF STRATA LOTS 27 AND 28,  
MAIN FLOOR**

SHEET 06 OF 07 SHEETS  
**STRATA PLAN VIS6326  
PHASE 12**

**SCALE 1: 100**



THE INTENDED PLOT SIZE OF THIS PLAN IS 432mm IN WIDTH BY 280mm IN HEIGHT (B SIZE) WHEN PLOTTED AT A SCALE OF 1: 100



**Williamson & Associates**  
Professional Surveyors  
3088 Barons Road  
Nanaimo B.C. V9T 4B5  
FILE: 08220C06

THE FIELD SURVEY REPRESENTED BY THIS PLAN WAS COMPLETED ON THE 10<sup>th</sup> DAY OF FEBRUARY, 2015.  
BRIAN S. HENNING, BCLS 672

# CROSS SECTION

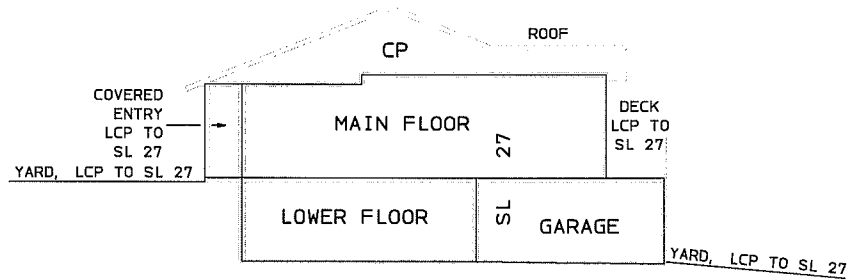
SHEET 07 OF 07 SHEETS

## STRATA PLAN VIS6326 PHASE 12

SCALE 1: 150



THE INTENDED PLOT SIZE OF THIS PLAN IS 432mm IN WIDTH BY 280mm IN HEIGHT (B SIZE) WHEN PLOTTED AT A SCALE OF 1: 150



**Williamson & Associates**  
Professional Surveyors  
3088 Barons Road  
Nanaimo B.C. V9T 4B5  
FILE: 08220C07

THE FIELD SURVEY REPRESENTED BY THIS PLAN WAS COMPLETED ON THE 10th DAY OF FEBRUARY, 2015.  
BRIAN S. HENNING, BCLS 672