

**SUBDIVISION PLAN OF LOTS 18 AND 25, PLAN 8000,  
SECTION 17, RANGE 4, CRANBERRY DISTRICT**

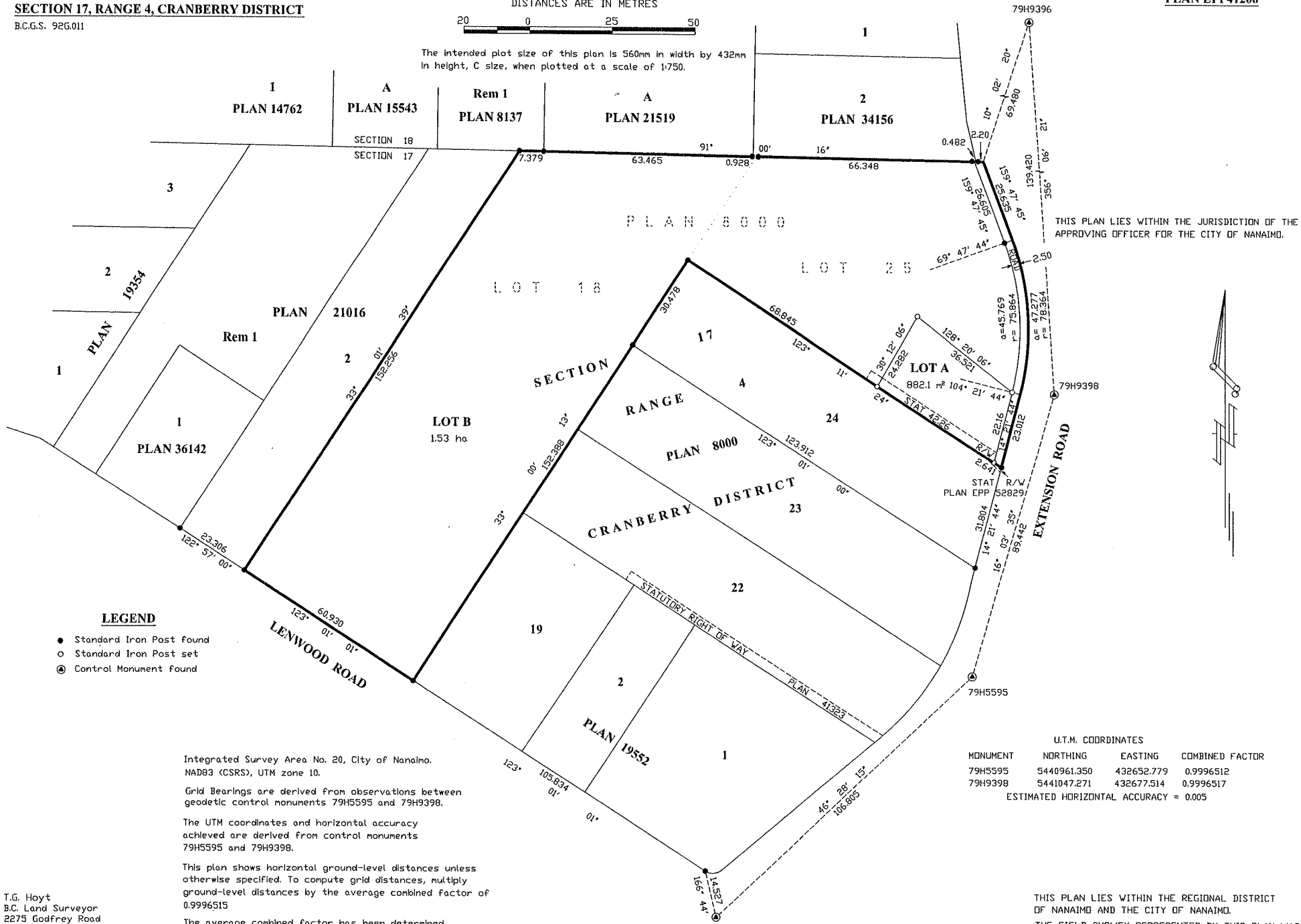
B.C.G.S. 925.011

SCALE 1:750  
DISTANCES ARE IN METRES

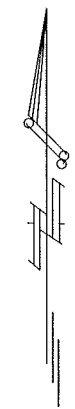


The intended plot size of this plan is 560mm in width by 432mm in height, C size, when plotted at a scale of 1:750.

**PLAN EPP41206**



THIS PLAN LIES WITHIN THE JURISDICTION OF THE APPROVING OFFICER FOR THE CITY OF NANAIMO.



**LEGEND**

- Standard Iron Post Found
- Standard Iron Post set
- ⊙ Control Monument Found

Integrated Survey Area No. 20, City of Nanaimo.  
NAD83 (CSRS), UTM zone 10.

Grid Bearings are derived from observations between geodetic control monuments 79H5595 and 79H9398.

The UTM coordinates and horizontal accuracy achieved are derived from control monuments 79H5595 and 79H9398.

This plan shows horizontal ground-level distances unless otherwise specified. To compute grid distances, multiply ground-level distances by the average combined factor of 0.9996515

The average combined factor has been determined based on an ellipsoidal elevation of 44.210 metres.

U.T.M. COORDINATES			
MONUMENT	NORTHING	EASTING	COMBINED FACTOR
79H5595	5440961.350	432652.779	0.9996512
79H9398	5441047.271	432677.514	0.9996517
ESTIMATED HORIZONTAL ACCURACY = 0.005			

THIS PLAN LIES WITHIN THE REGIONAL DISTRICT OF NANAIMO AND THE CITY OF NANAIMO.  
THE FIELD SURVEY REPRESENTED BY THIS PLAN WAS COMPLETED ON THE 4th DAY OF JUNE, 2015.  
THOMAS G. HOYT, BCLS 721

T.G. Hoyt  
B.C. Land Surveyor  
2275 Godfrey Road  
Nanaimo, B.C.  
V9X 1E7  
250-753-2921