

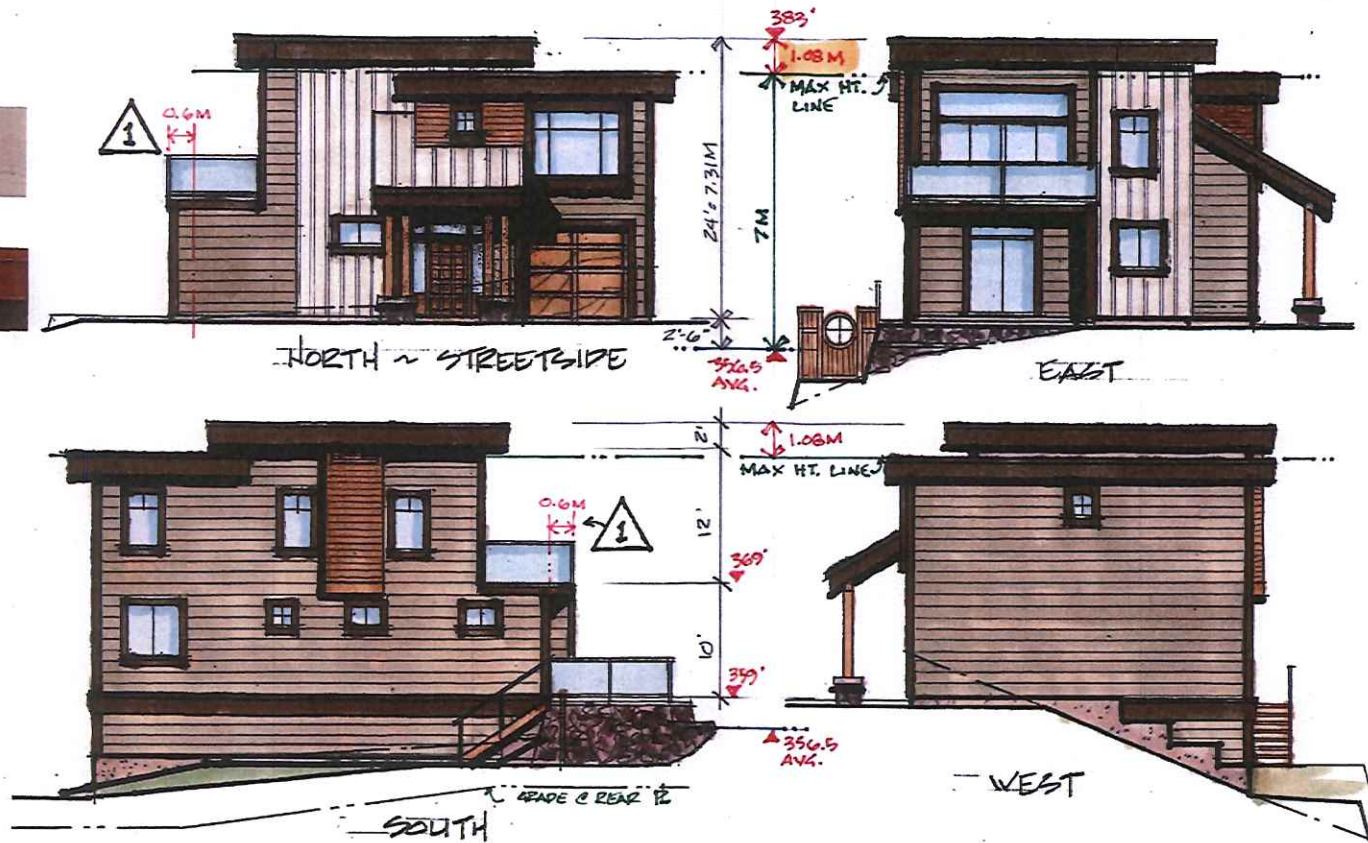
**House "A"**  
 Scale 1"=10'

**Materials and colours**

-  Hardipanel fascia and trims  
Raccoon fur
-  Hardiplank siding  
Aged pewter
-  Metal cladding  
Bridger steel ultra batten
-  Cedar siding and timber  
Clear U.V. protected finish
-  Stonework  
Ocean mist K2
-  Railings  
Black KS with smoked glass

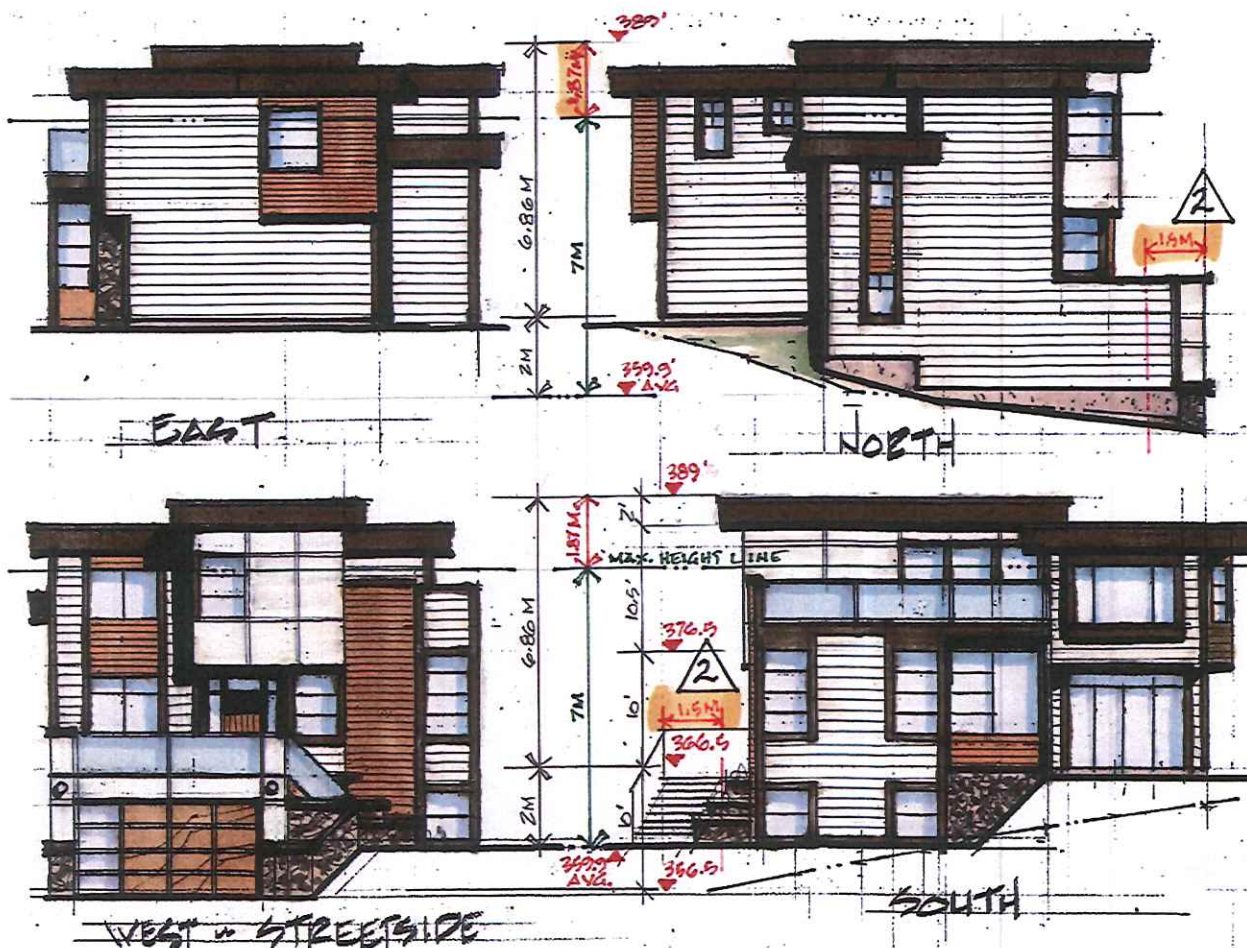
### Materials and colours

-  Hardipanel fascia and trims
-  Raccoon fur
-  Hardiplank siding
-  Aged pewter
-  Metal cladding
-  Bridger steel ultra batten
-  Cedar siding and timber
-  Clear U.V. protected finish
-  Stonework
-  Ocean mist K2
-  Railings
-  Black KS with smoked glass



**House "B"**  
Scale 1"=10'

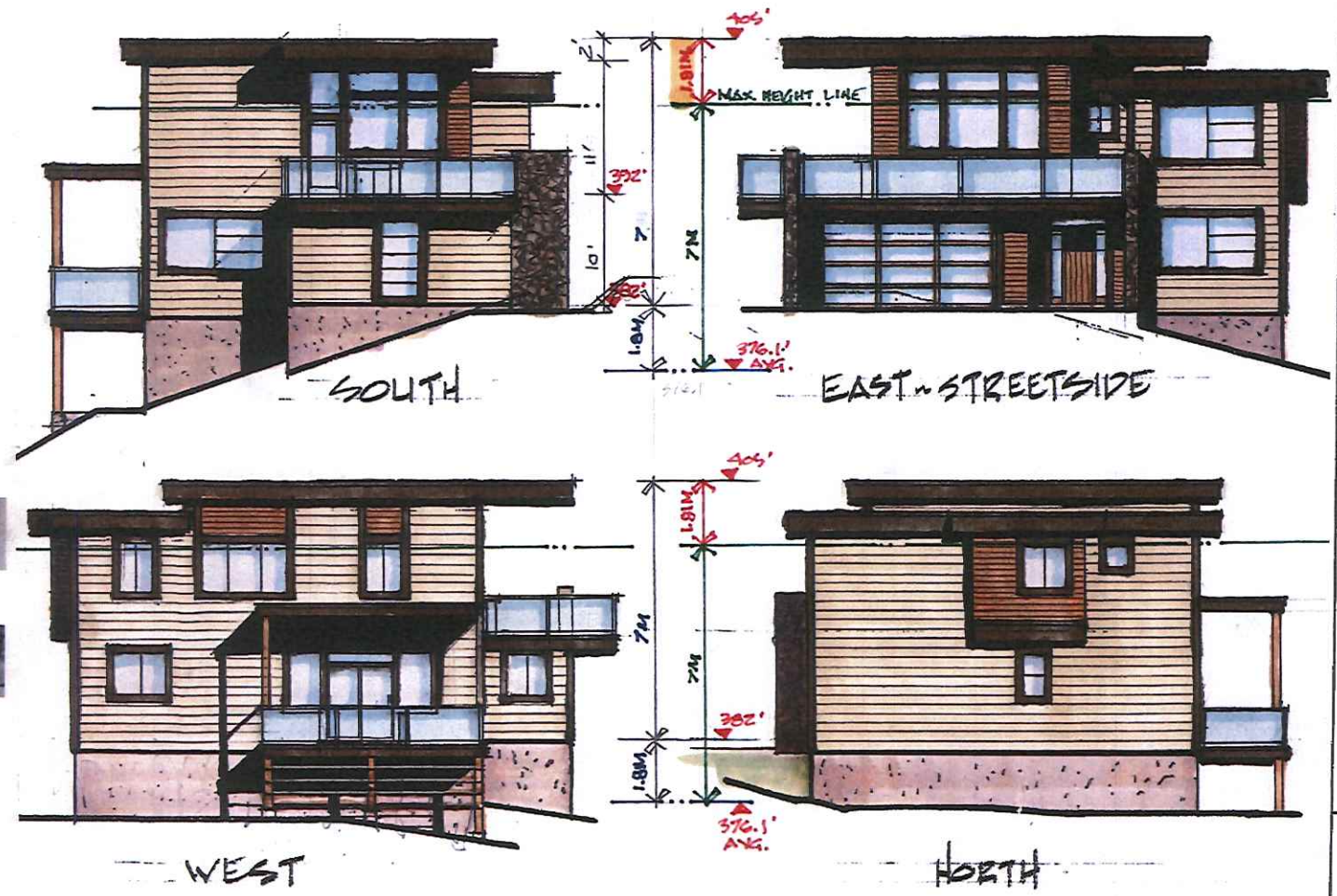




**House "C"**  
 Scale 1"=10'

- ### Materials and colours
-  Hardipanel fascia and trims  
Raccoon fur
  -  Hardiplank siding  
Arctic white
  -  Hardipanel siding with metal grid  
Arctic white
  -  Hardiplank siding  
Light mist
  -  Metal cladding  
Bridger steel ultra batten
  -  Cedar siding and timber  
Clear U.V. protected finish
  -  Stonework  
Ocean mist K2
  -  Rallings  
Black KS with smoked glass

- Materials and colours**
-  Hardiplank fascia and trims  
Raccoon fur
  -  Hardiplank siding  
Arctic white
  -  Hardiplank siding with metal grid  
Arctic white
  -  Hardiplank siding  
Light mist
  -  Metal cladding  
Bridger steel ultra batten
  -  Cedar siding and timber  
Clear U.V. protected finish
  -  Stonework  
Ocean mist K2
  -  Railings  
Black KS with smoked glass



**House "D"**  
Scale 1"=10'