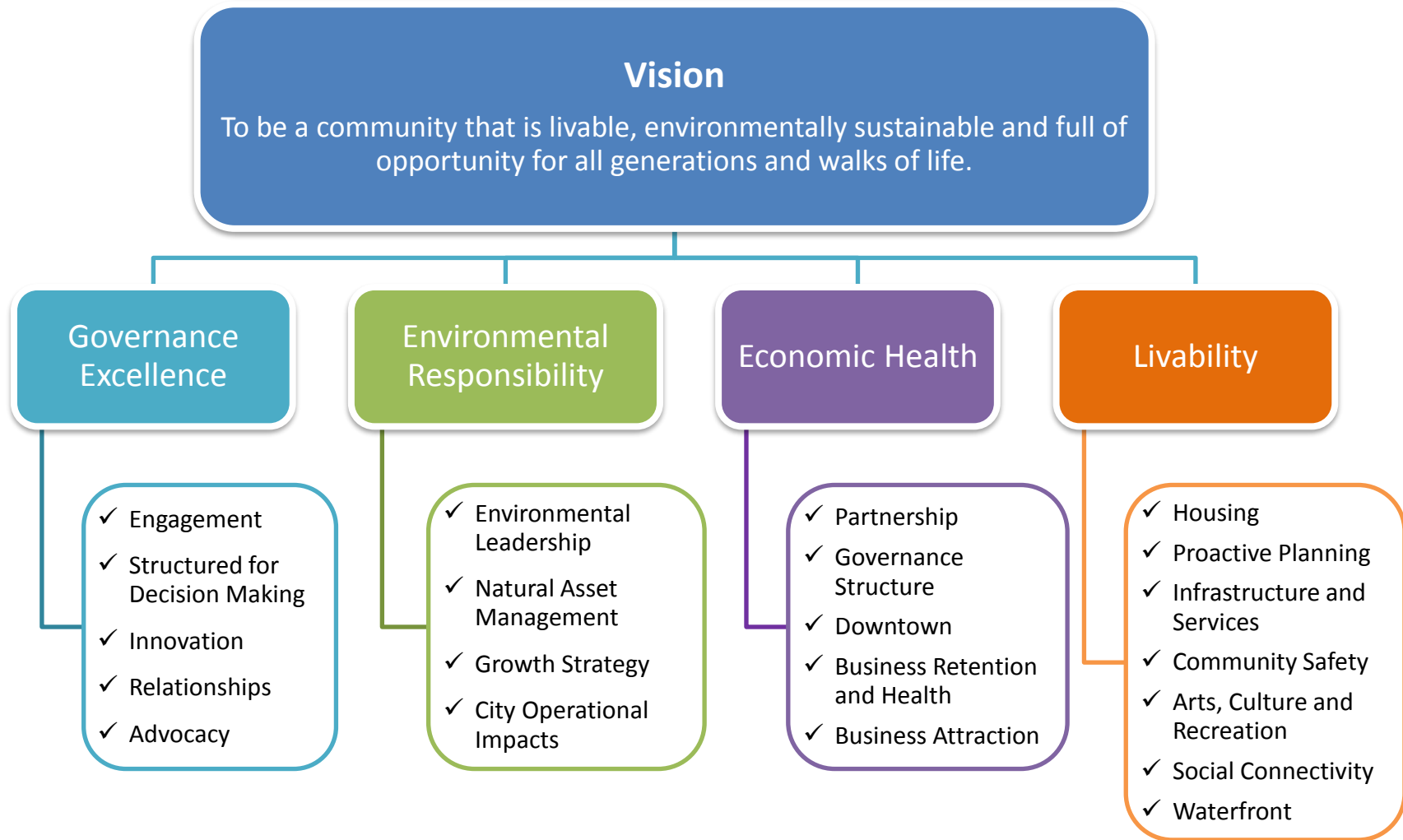


Draft Strategic Plan 2019



1. Governance Excellence

We will develop a culture of excellence around governance, management and cost effective service delivery

Engagement

Engage with the community in a deliberate and disciplined way

Structured for Decision Making

Ensure that we are structured and resourced for expeditious, high quality decision making and action within our risk framework

Innovation

Create a vibrant culture of innovation, stewardship and partnership to encourage a healthy, robust City

Relationships

Invest in relationships which impact and support our community

Advocacy

Focus on targeted advocacy with other levels of government to support our strategic goals and long-term interests

2. Environmental Responsibility

We will protect and enhance Nanaimo's natural environment by looking after the community's biological diversity and adapt the way we live, work, recreate and move

Environmental Leadership

Take a leadership role in preparing our community for climate change and environmental stewardship

Natural Asset Management

Identify, protect and enhance the ecological health of our significant natural resources and systems

Growth Strategy

Support land development in a manner that efficiently uses our infrastructure to reduce our impact on the natural environment

City Operational Impacts

Focus on our environmental impact/climate change contribution in our decision making and regional participation

Transportation

Ensure our transportation systems are designed to encourage multi-modal transportation

3. Economic Health

We create a vibrant culture of innovation, stewardship and partnership to encourage a diverse and healthy economy now and into the future

Partnership

Strengthen partnerships and collaboration with First Nations, the private sector, educational institutions, other levels of government and other organizations

Governance Structure

Ensure our economic development efforts are governed and measured to produce value for the community

Downtown

Have our downtown recognized as a livable and desirable heart of our community

Business Retention and Health

Focus on business retention and expansion

Business Attraction

Position Nanaimo as the best place to grow a business with a focus on businesses that align with our strategic direction

4. Livability

We proactively plan for Nanaimo's growth and focus on community infrastructure to support an inclusive, healthy and desirable place to live.

Housing

Support the provision of affordable and accessible housing for all our community needs

Proactive Planning

Engage the community in long-term community planning

Infrastructure and Services

Improve our community infrastructure and services to support Nanaimo as an active and healthy place to live

Community Safety

Create a City in which all people live, work, play and learn in a safe and connected community

Arts, Culture & Recreation

Support arts, culture and recreation as an integral part of everyday life

Social Connectivity

Continue to facilitate solutions for social issues impacting our community and residents

Waterfront

Continue to increase opportunities for residents to access our waterfront and natural environment