

# Police Services in Nanaimo



2012 Financial Plan Presentation

# Police Services in Nanaimo

---

## Responsible for:

- policing and law enforcement in the City with a police force of sufficient numbers:
  - to adequately enforce municipal bylaws, the criminal law and the laws of BC *Police Act, Sec 15(a)(i)*
  - to maintain law and order in the City *Police Act, Sec 15(a)(ii)*
- providing adequate accommodation, equipment and supplies for:
  - the operations of and use by the police *Police Act, Sec 15(b)(i)*
  - the detention of persons required to be held in police custody other than on behalf of the Province *Police Act, Sec 15(b)(ii)*
- providing “all necessary support staff” *Municipal Police Unit Agreement , Art 3.6*



# Police Services in Nanaimo

---

## Police service overview

Police service is provided to the City of Nanaimo by the Provincial Police Force which, in turn, is contracted to the Royal Canadian Mounted Police who have established the RCMP Nanaimo Detachment

RCMP Nanaimo Detachment encompasses a geographic area:

- from Haslam Creek in the south (including Cedar & Extension)
- to Nanoose railway overpass in the north  
(including East Wellington, Lantzville & Nanoose First Nations)
- does not include Gabriola Island or Nanaimo Airport

The RCMP detachment is supported by the Police Support Services department under the Community Safety & Development division



# Police Services in Nanaimo

Council's budget priority is to “maintain a high standard of protective services”

Council has approved Annual Policing Priorities for the RCMP in 2012/13:

## 1. Crime Reduction

- a) Prolific Offender Management program
- b) Liquor Control Strategy
- c) Violence in Relationships
- d) Drug Enforcement

## 2. Youth

- a) School Liaison Program
- b) Youth Education
- c) Community Partnerships for Youth

## 3. Traffic Services

- a) Drinking & Driving Enforcement
- b) Driving Safety (ie: seatbelts, distracted drivers, etc)
- c) Marine Patrols (ie: harbour and lakes)

## 4. Downtown

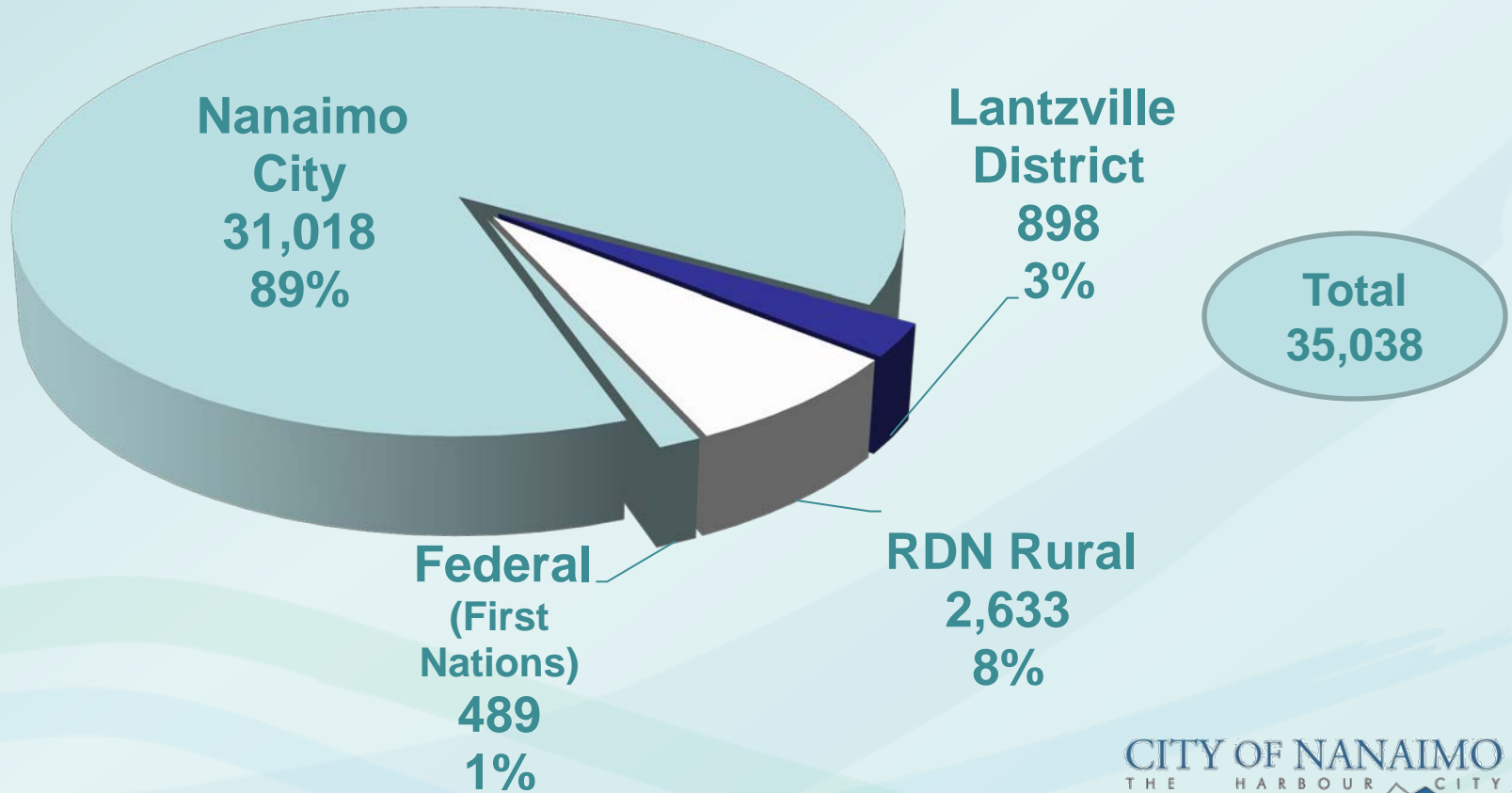
- a) Liquor Control Strategy
- b) Nuisance Property Committee



# Police Services in Nanaimo

## Calls for service (2011)

RCMP Nanaimo Detachment calls for service by area



# Police Services in Nanaimo

## RCMP Nanaimo Detachment

### Police Human Resources

FUNDING SOURCE >	City	Province	Canada
Regular members (154)	139	12	2
Civilian members (27)	1	26	-
Municipal employees (67)	67	-	-
Public Service Employees (2)	-	2	-
	<b>207</b>	<b>40</b>	<b>2</b>

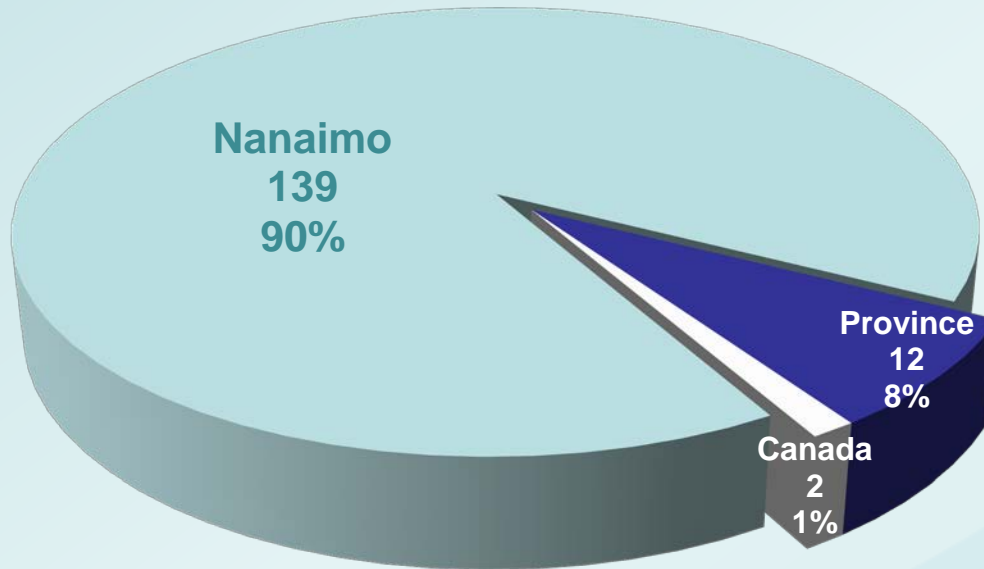
A Police Human Resource Study was conducted in 2008  
Council approved the addition of  
24 RM's for General Duty Patrol and 10 support staff over 5 years



# Police Services in Nanaimo

## RCMP Nanaimo Detachment

### Police Human Resources



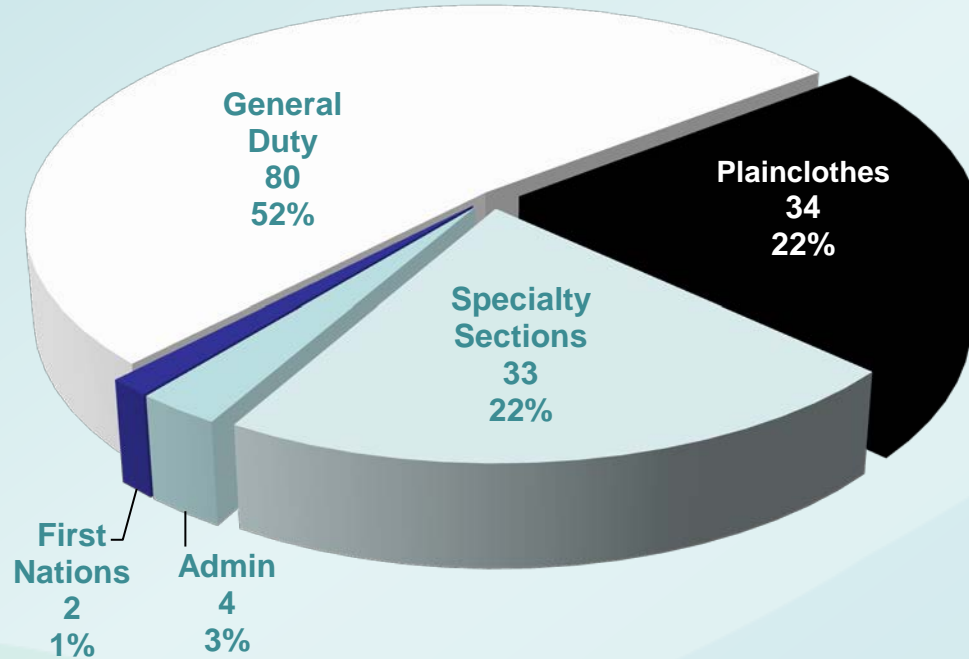
153 regular members by funding source



# Police Services in Nanaimo

## RCMP Nanaimo Detachment

### Police Human Resources



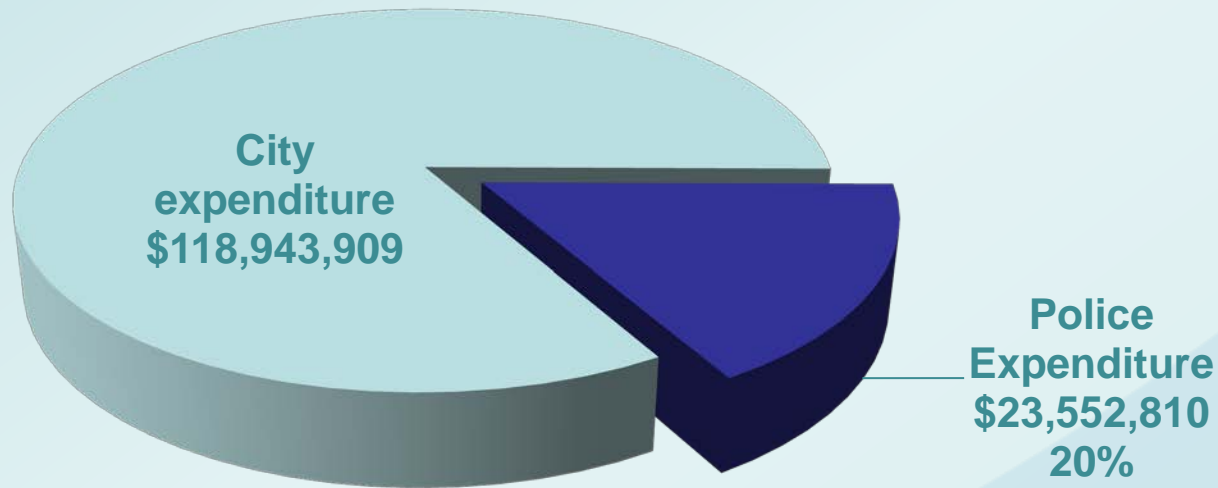
153 regular members by functional area



# Police Services in Nanaimo

## RCMP Nanaimo Detachment

Cost of policing . . .



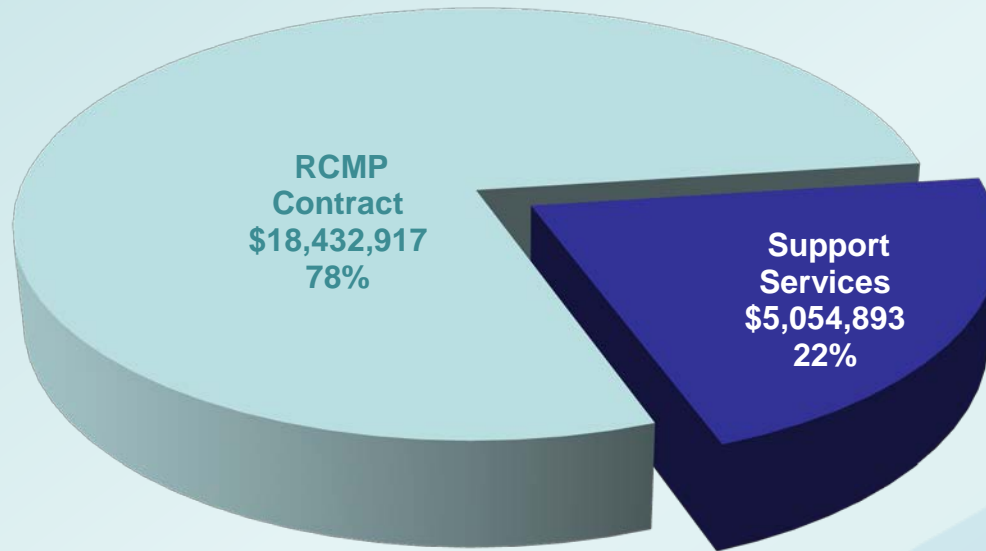
Police expenditures are offset by revenues of \$2,088,489  
(including Traffic Fine Revenues)



# Police Services in Nanaimo

## RCMP Nanaimo Detachment

Cost of policing . . .



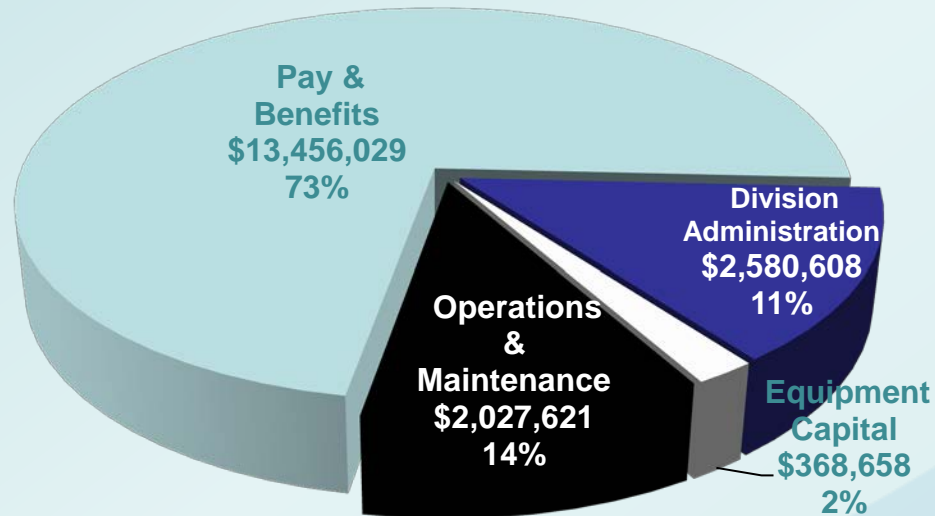
The police operating budget is divided into two segments



# Police Services in Nanaimo

## RCMP Nanaimo Detachment

Cost of policing . . .



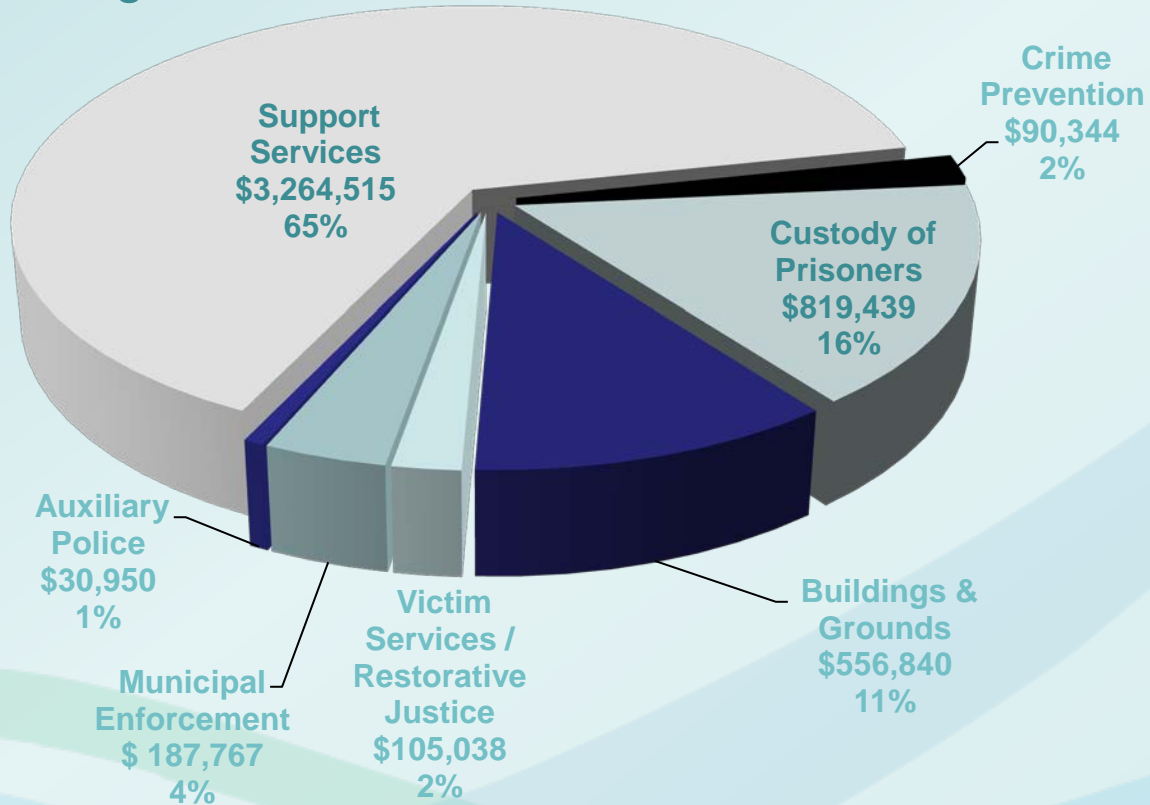
How the RCMP spends \$18.4M funded by Nanaimo (our 90%)



# Police Services in Nanaimo

## RCMP Nanaimo Detachment

Cost of policing . . .



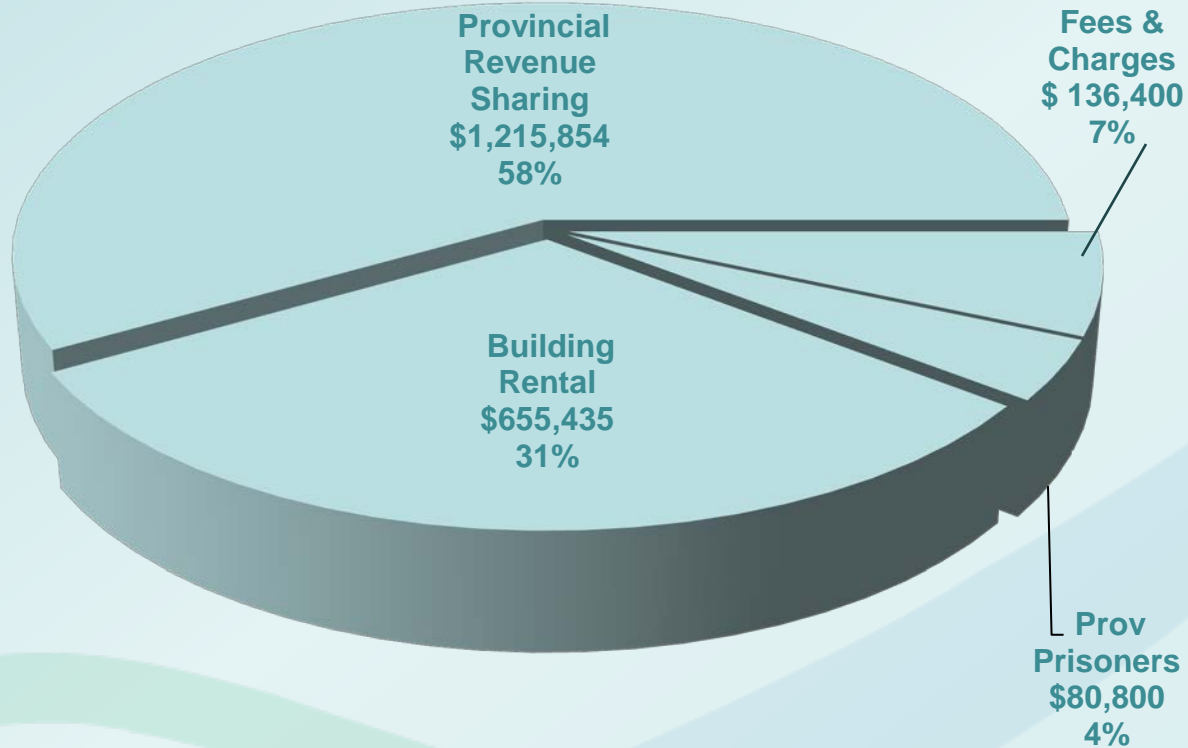
Police Support Expenses



# Police Services in Nanaimo

## RCMP Nanaimo Detachment

Cost of policing . . .



Police Support Services Non-Taxation Revenue



# Police Services in Nanaimo

---

## RCMP Nanaimo Detachment

Future projects . . .

2012

1. Cell block renovation \$825,000 (carried over from 2009)
2. Surveillance cameras \$70K direct / \$200K indirect

2013

3. Police building expansion design \$1,113,750

2014

4. Police building expansion construction \$7,425,000

