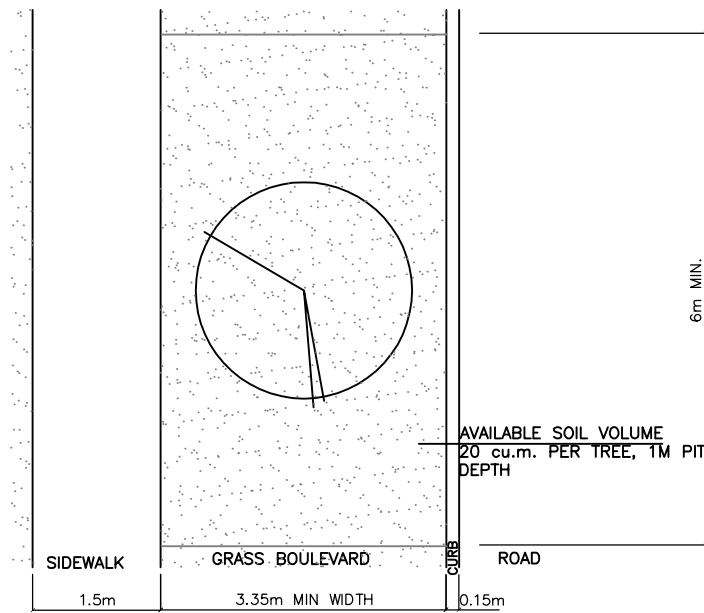
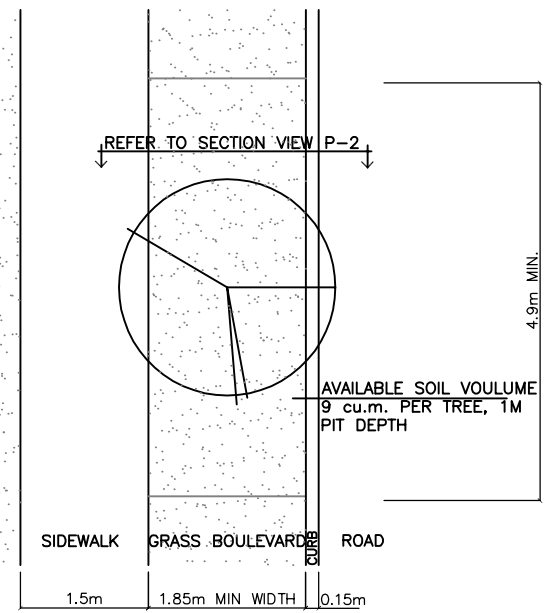


TREE PLANTING WITH 4 cu.m ROOT ZONE N.T.S.
PLAN VIEW

NOTE: REFER TO SPECIFICATIONS CLAUSE
14.3-14.5 FOR STREET TREE SPACING, LOCATION
AND SIZE IN RELATION TO AVAILABLE ROOT ZONE
VOLUME.



TREE PLANTING WITH 20cu.m ROOT ZONE N.T.S.
PLAN VIEW



TREE PLANTING WITH 9 cu.M ROOT ZONE N.T.S.
PLAN VIEW

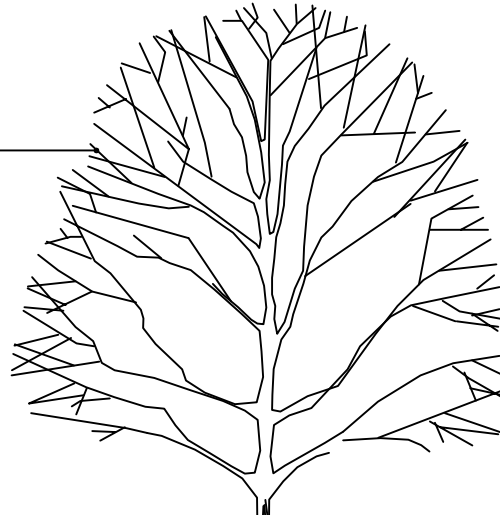


TREE PLANTING ROOT ZONE VOLUME

Scale	N.T.S.
Drawn	J.G.
Rev. Date:	JAN. 1998
Dwg. No.	P-1

APPROVED TREE SPECIES
AS PER PLANTING PLAN

PRUNE FOR CLEARANCE (REFER TO SPECIFICATIONS CLAUSE
14.2.5) AND FOR TREE HEALTH (CLAUSE 14.61).



NOTE: PLANT TREE WITH NURSERY SOIL LINE AT 50mm
ABOVE FINISH GRADE. FORM 50mm DEEP SAUCER AT
BASE OF TREE.

REFER TO SPECIFICATION
CLAUSE 14.30.1 AND 14.59
FOR STAKING MATERIALS AND
INSTALLATION.

75mm DEPTH BARK MULCH TO 600mm RADIUS AT TREE.

SOD ON 150mm DEPTH TOPSOIL AS PER SPECIFICATION.

150mm MIN. DEPTH "A HORIZON" AMENDED TOPSOIL PER SPECIFICATIONS.

PROVIDE 12mm FREEBOARD BETWEEN FINISHED GRADE
AND ADJACENT PAVED SURFACES.

UNTIE AND REMOVE TOP 1/3 OF BURLAP FROM ROOTBALL.

NOTE: BALLED AND BURLAP TREE IS ILLUSTRATED. IF
CONTAINER OR BAG GROWN TREES ARE USED, COMPLETELY
REMOVE IMPERISHABLE CONTAINERS.

IRRIGATION TRENCH

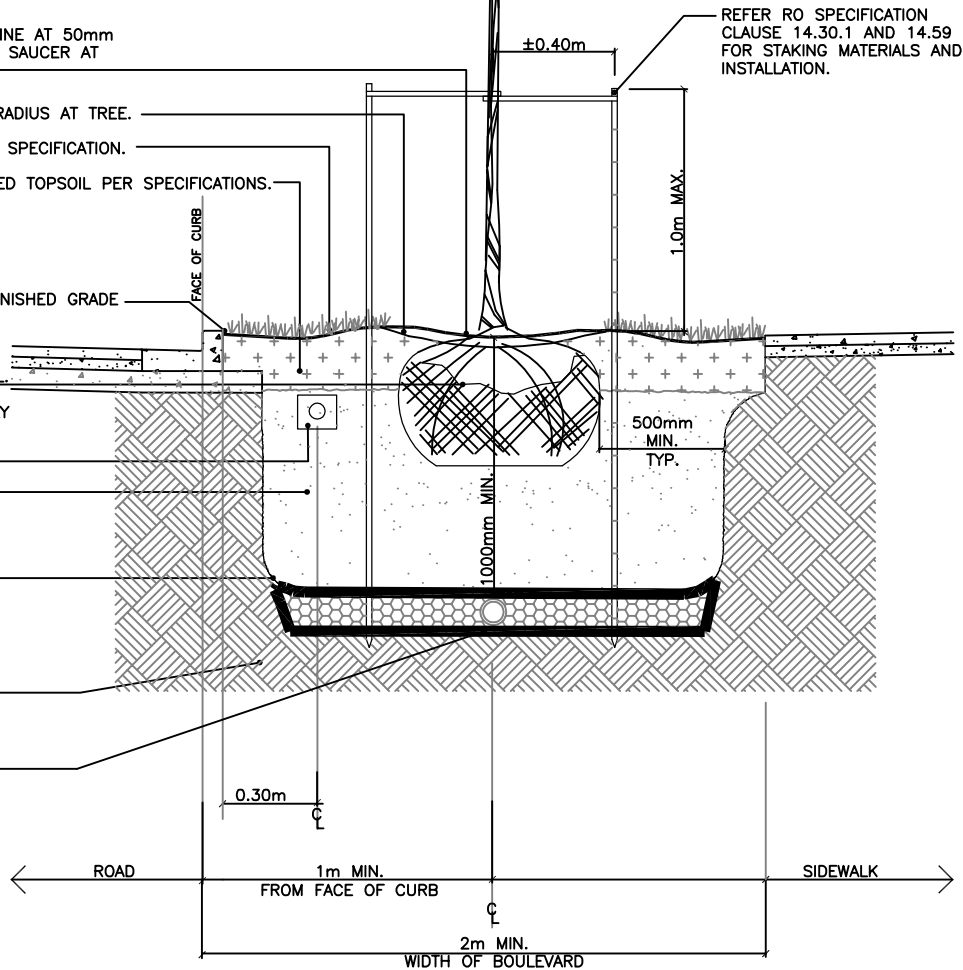
SUBSOIL (REFER TO CLAUSE 14.17 OF SPECIFICATIONS).

ROUGHEN PIT BOTTOM AND SIDES TO REMOVE GLAZING.

UNDISTURBED NATIVE SOILS OR COMPACTED SUBGRADE.

NOTE: CONDITIONAL ITEM

TEST PLANTING PITS FOR DRAINAGE AS PER
CLAUSE 14.58.2 OF SPECIFICATIONS PRIOR TO
PLANTING. REPORT INADEQUATE DRAINAGE TO THE
ENGINEER. ON DIRECTION OF THE ENGINEER
INSTALL PVC DRAIN IN 150mm DEPTH DRAINROCK
C/W FILTERCLOTH AND DRAIN TO STORM SEWER.



TREE PLANTING IN GRASS BOULEVARD
SECTION VIEW-P-2

nts



TREE PLANTING IN GRASS BOULEVARD

Scale N.T.S.

Drawn J.G.

Rev. Date: JAN. 1998

Dwg. No. P-2

REMOVE DEAD, DAMAGED
OR WEAK GROWTH

FORM WATERING BASIN AT SHRUB BASE.
NOTE: ENSURE THE SOIL LEVEL DOES NOT EXCEED THE
ORIGINAL NURSERY SOIL LINE AND THAT ROOTS ARE
COMPLETELY COVERED IN SOIL.

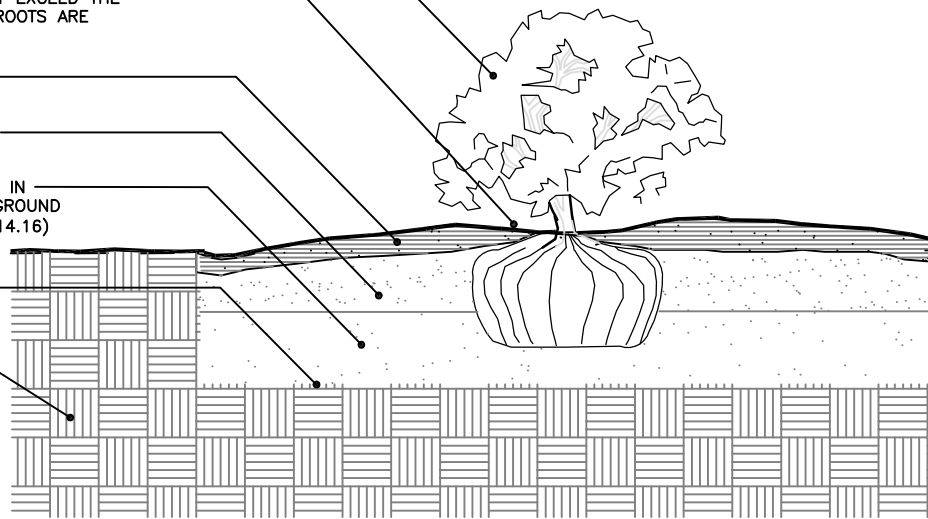
50mm DEPTH BARK MULCH.

150mm LAYER OF 'A HORIZON' SOIL MIX.
(SPECIFICATIONS CLAUSE 14.18)

300mm LAYER OF UN-AMENDED TOPSOIL IN
SHRUB BEDS. 150mm LAYER DEPTH IN GROUND
COVERS BEDS. (SPECIFICATIONS CLAUSE 14.16)

SCARIFY BOTTOM OF PLANTING BED TO
REMOVE GLAZING

COMPACTED FILL OR NATIVE MATERIAL



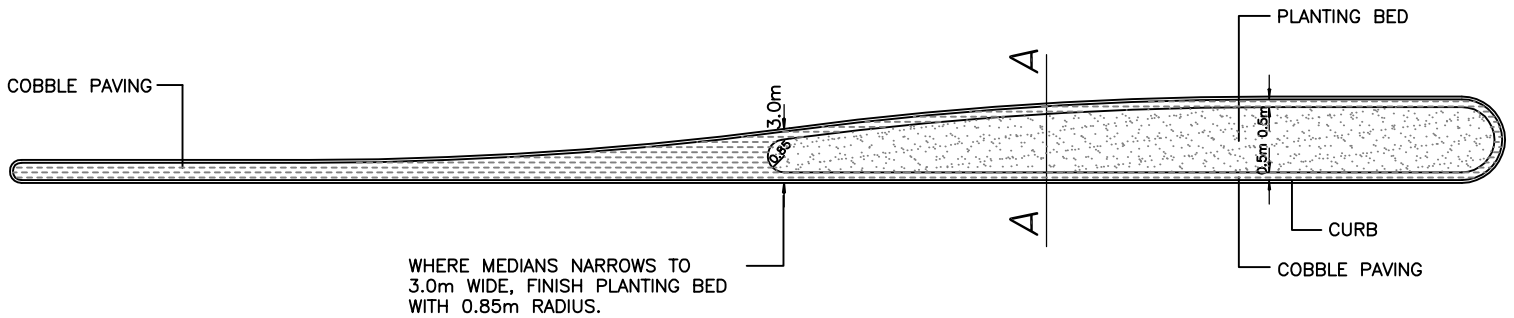
SHRUB IN PLANTING BED

nts



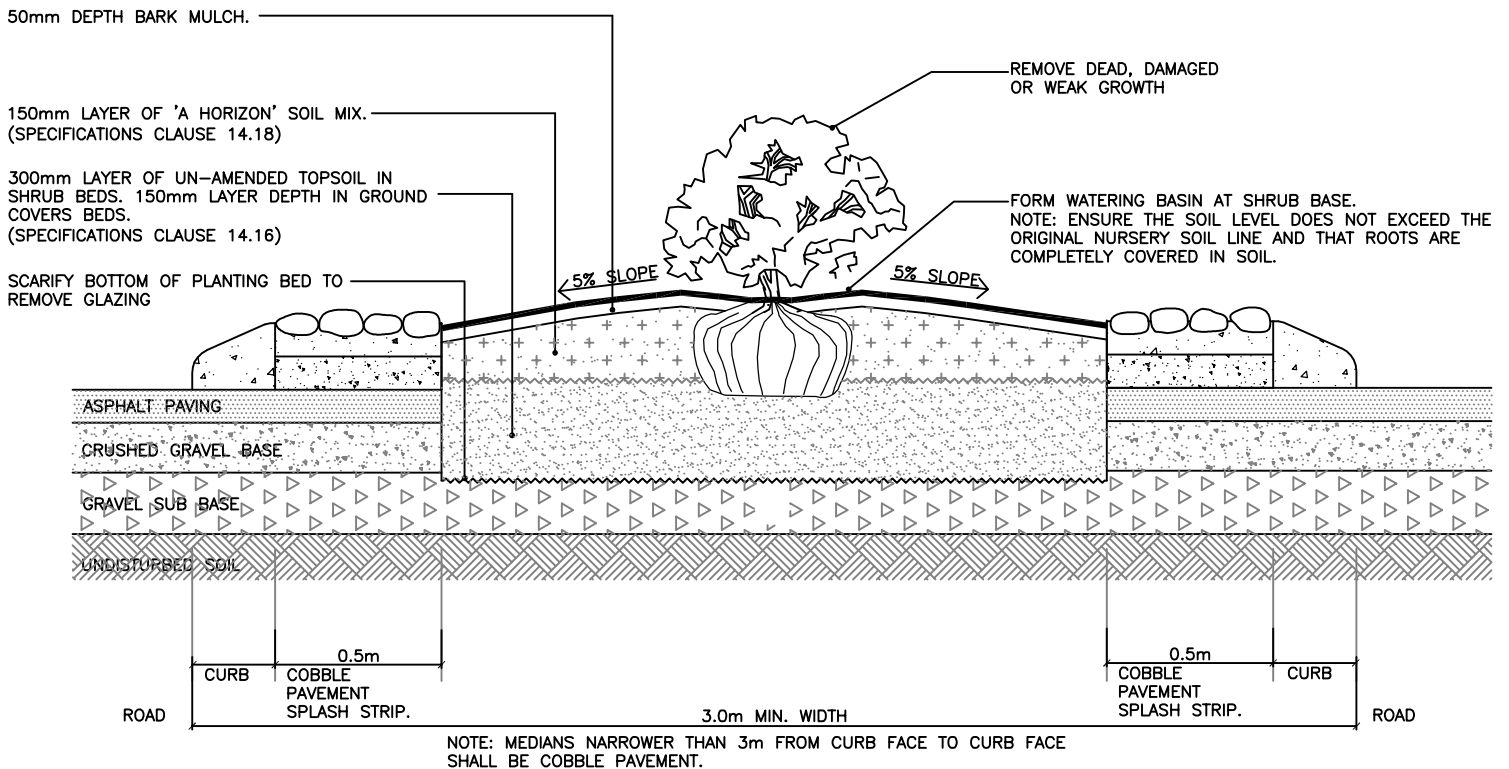
SHRUB IN PLANTING BED

Scale	N.T.S.
Drawn	J.G.
Rev. Date:	JAN. 1998
Dwg. No.	P-3



MEDIAN PLANTING BEDS
PLAN VIEW

nts



MEDIAN PLANTING BEDS
SECTION VIEW A

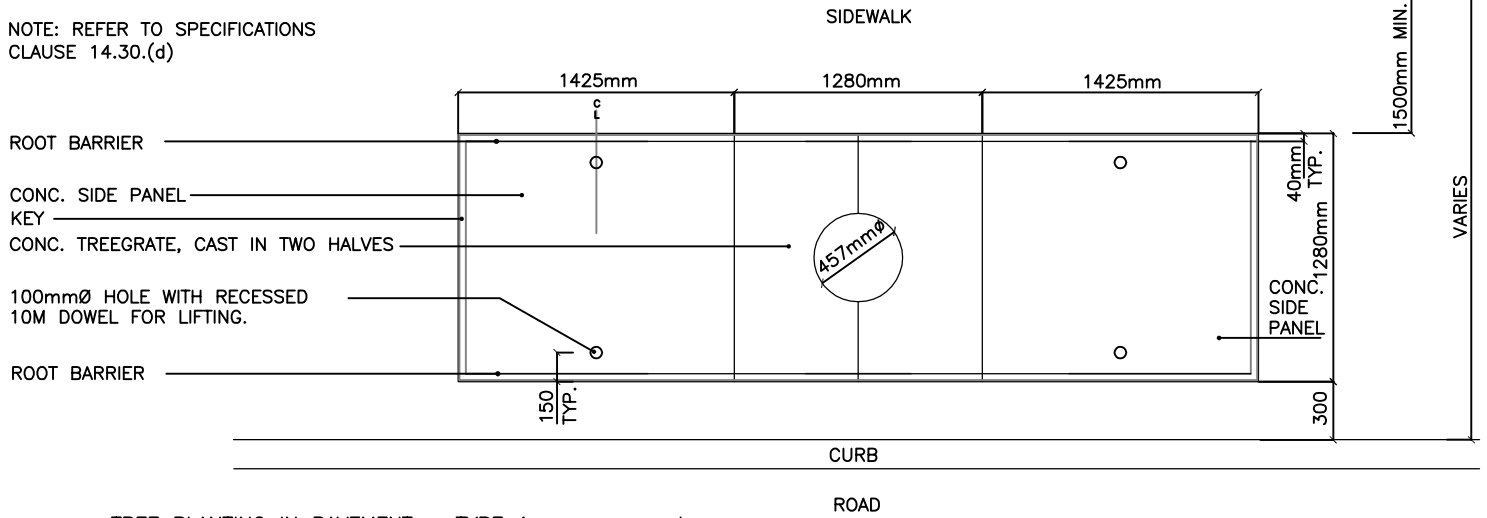
nts



SHRUB PLANTING IN MEDIAN

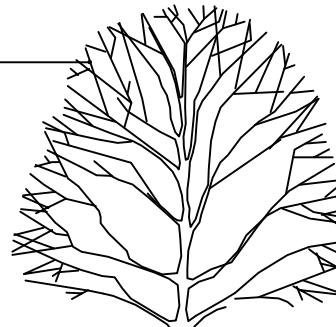
Scale	N.T.S.
Drawn	J.G.
Rev. Date:	JAN. 1998
Dwg. No.	P-4

NOTE: REFER TO SPECIFICATIONS
 CLAUSE 14.30.(d)



TREE PLANTING IN PAVEMENT – TYPE 1 nts
 PLAN VIEW

APPROVED TREE SPECIES
 AS PER SPECIFICATIONS.
 PRUNE FOR CLEARANCE (REFER TO SPECIFICATIONS
 CLAUSE 14.2.4) AND FOR TREE HEALTH (CLAUSE
 14.62).



NOTE: PLANT TREE WITH NURSERY SOIL LINE AT 50mm
 ABOVE FINISH GRADE. FORM 50mm DEEP EARTH SAUCER
 AT BASE OF TREE.

75mm DEPTH OF BARK MULCH.

CONC. TREEGRATE

PREPARE ROOTBALL PER CLAUSE 14.59.5

100mm Ø HOLE WITH RECESSED 10M DOWEL FOR LIFTING.

SIDE PANEL

150mm DEPTH "A HORIZON" AMENDED
 TOPSOIL PER CLAUSE 14.18

SUBSOIL (REFER TO CLAUSE 14.7 OF
 SPECIFICATIONS).

ROUGHEN PIT BOTTOM AND SIDE TO
 REMOVE GLAZING.

UNDISTURBED NATIVE SOILS OR
 COMPACTED SUBGRADE.

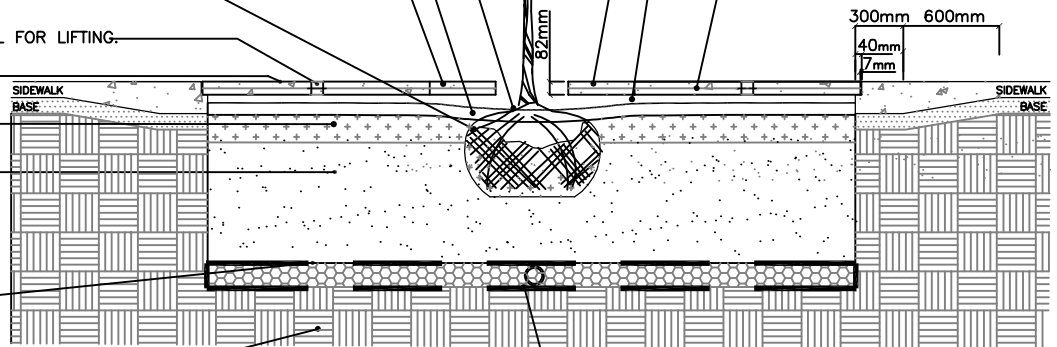
CONC. TREEGRATE

AIR SPACE, 50mm DEPTH

10M STEEL REINFORCING BAR

Ø 900 O.C. BOTH WAYS

REFER TO SECTION 11 OF ENGINEERING
 SPECIFICATIONS



NOTE: CONDITIONAL ITEM
 TEST PLANTING PITS FOR DRAINAGE AS PER CLAUSE
 14.58.2 OF SPECIFICATIONS PRIOR TO PLANTING. REPORT
 INADEQUATE DRAINAGE TO THE ENGINEER. ON DIRECTION
 FROM THE ENGINEER INSTALL PVC DRAIN IN 150mm DEPTH
 DRAIN ROCK C/W FILTER CLOTH AND DRAIN TO STORM
 SEWER.

TREE PLANTING IN PAVEMENT – TYPE 1 nts
 SECTION VIEW



TREE IN PAVEMENT
 TYPE 1

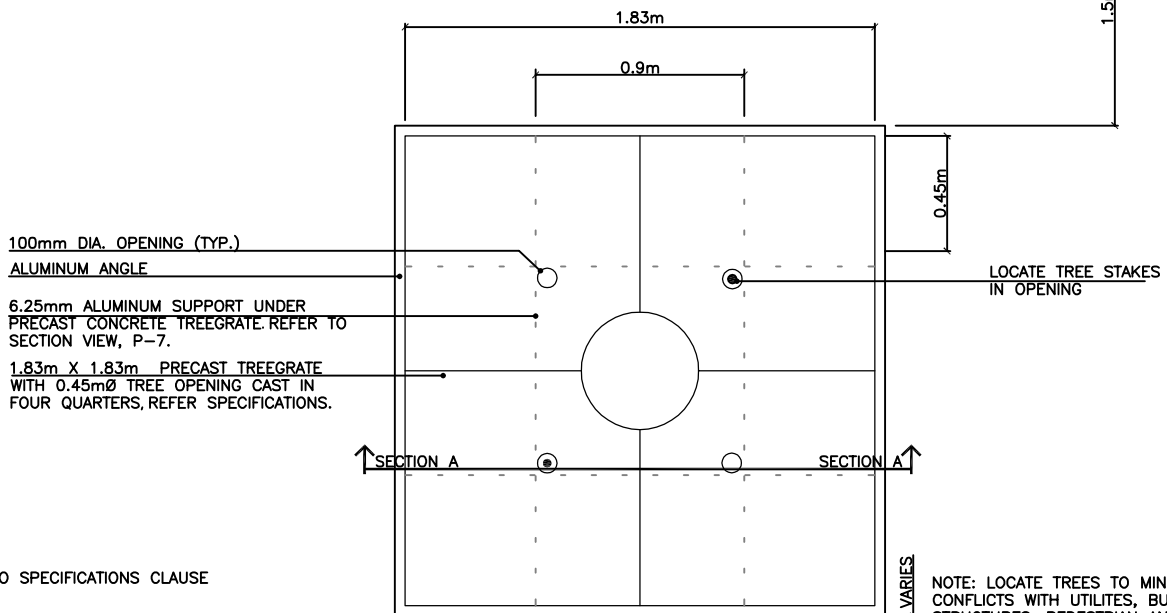
Scale N.T.S.

Drawn J.G.

Rev. Date: DEC. 1997

Dwg. No. P-5

PAVED SIDEWALK



NOTE: REFER TO SPECIFICATIONS CLAUSE 14.30(d)

NOTE: LOCATE TREES TO MINIMIZE CONFLICTS WITH UTILITIES, BUILDINGS, STRUCTURES, PEDESTRIAN AND VEHICULAR TRAFFIC.

CURB

ROAD

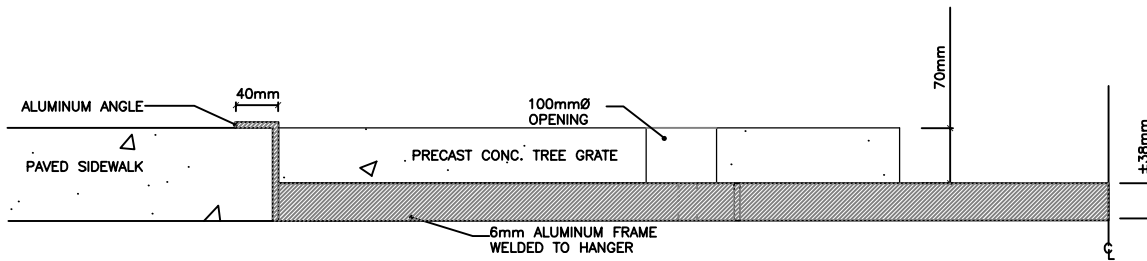
TREE GRATE PLAN VIEW
PLAN VIEW

nts



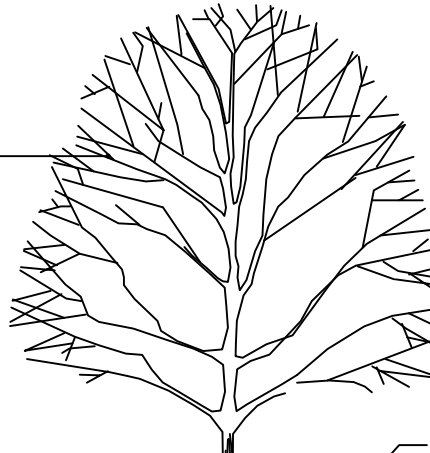
TREE IN PAVEMENT – TYPE 2
TREE GRATE PLAN VIEW

Scale	N.T.S.
Drawn	J.G.
Rev. Date:	JAN 1998
Dwg. No.	P-6



TREE GRATE HANGER nts
SECTION VIEW B

APPROVED TREE SPECIES
AS PER SPECIFICATIONS.
PRUNE FOR CLEARANCE (REFER TO SPECIFICATIONS
CLAUSE 14.2.5) AND FOR TREE HEALTH (CLAUSE
14.62).



NOTE: PLANT TREE WITH NURSERY SOIL LINE AT 50mm
ABOVE FINISH GRADE.
FORM 50mm DEEP EARTH SAUCER AT BASE OF TREE.

- 75mm DEPTH BARK MULCH.
- 100Ø OPENING (TYP.)
- PRECAST CONC. TREE GRATE
- 6mm ALUMINUM FRAME WELDED TO HANGER
- 150mm DEPTH "A HORIZON" AMENDED TOPSOIL PER CLAUSE 14.18
- 6mm ALUMINUM ANGLE
REFER TO SECTION VIEW B

REFER TO SPECIFICATIONS
CLAUSE 14.30.1 AND 14.59
FOR STAKING MATERIALS AND
INSTALLATION.

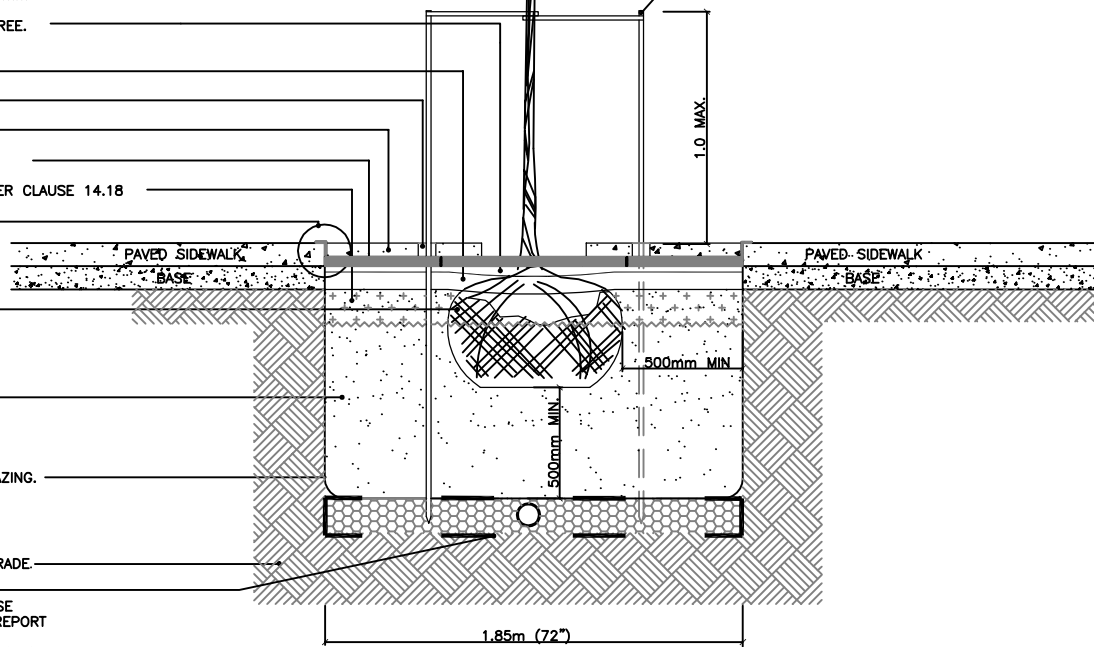
PREPARE ROOTBALL PER CLAUSE 14.59.5

SUBSOIL
REFER TO CLAUSE 14.17 OF SPECIFICATIONS.

ROUGHEN PIT BOTTOM AND SIDES TO REMOVE GLAZING.

UNDISTURBED NATIVE SOILS OR COMPACTED SUBGRADE.

NOTE: CONDITIONAL ITEM
TEST PLANTING PITS FOR DRAINAGE AS PER CLAUSE
14.58.2 OF SPECIFICATIONS PRIOR TO PLANTING. REPORT
INADEQUATE DRAINAGE TO THE ENGINEER.
ON DIRECTION OF THE ENGINEER INSTALL PVC DRAIN IN
150mm DEPTH DRAIN ROCK C/W FILTER CLOTH AND DRAIN
TO STORM SEWER.



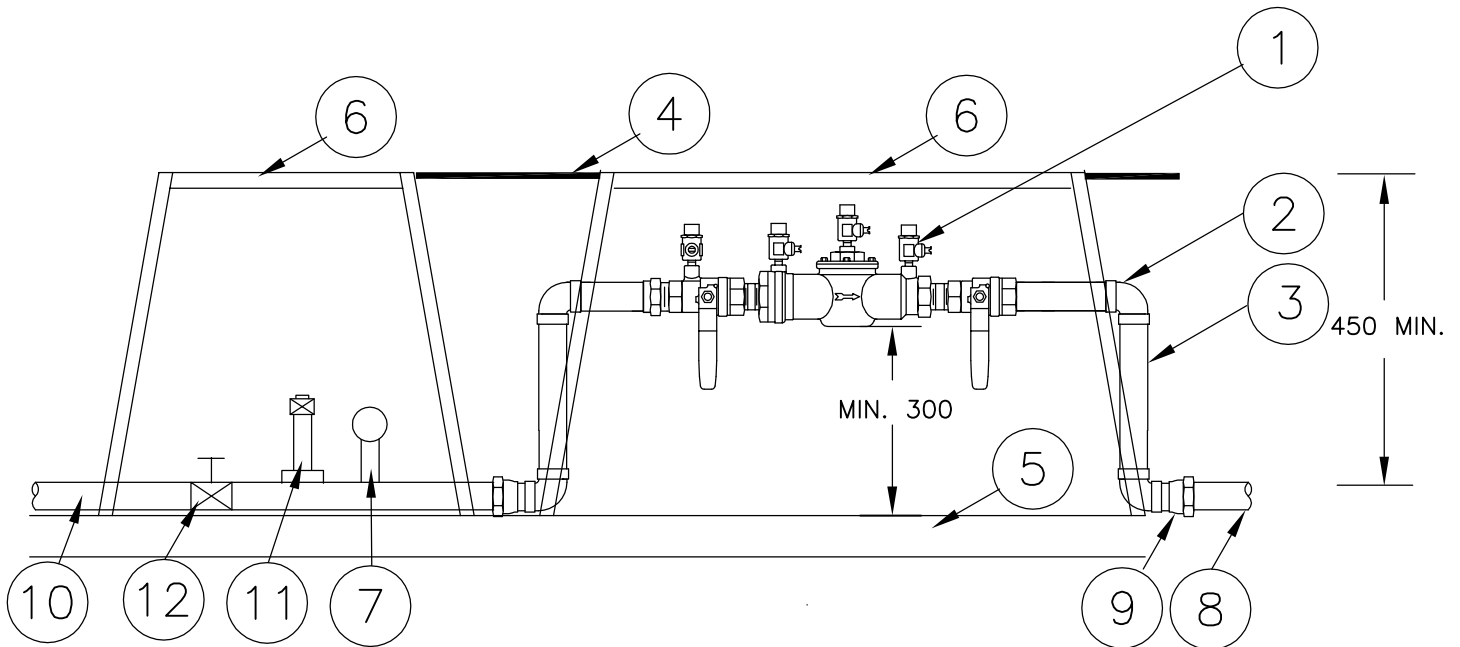
TREE PLANTING IN PAVEMENT- TYPE 2 nts
SECTION VIEW A



TREE IN PAVEMENT
TYPE 2

Scale	N.T.S.
Drawn	J.G.
Rev. Date:	JAN 1998
Dwg. No.	P-7

- ① DOUBLE CHECK BACKFLOW PREVENTER
- ② BRASS 90° ELL (1 OF 4)
- ③ BRASS NIPPLE (TYPICAL)
- ④ FINISH GRADE
- ⑤ 50mm DEPTH 19mm MINUS GRAVEL
- ⑥ VALVE BOX C/W BOLTED LID
- ⑦ LIQUID FILLED PRESSURE GAUGE
- ⑧ 1" SCHEDULE 40 PVC TO CONTROL VALVE BOX
- ⑨ SCHEDULE 40 PVC MALE ADAPTER
- ⑩ COPPER PIPE OR BRASS FITTINGS FROM CITY OF NANAIMO WATER METER.
- ⑪ 19mm BRONZE QUICK COUPLER ON RISER
- ⑫ BRONZE GATE VALVE



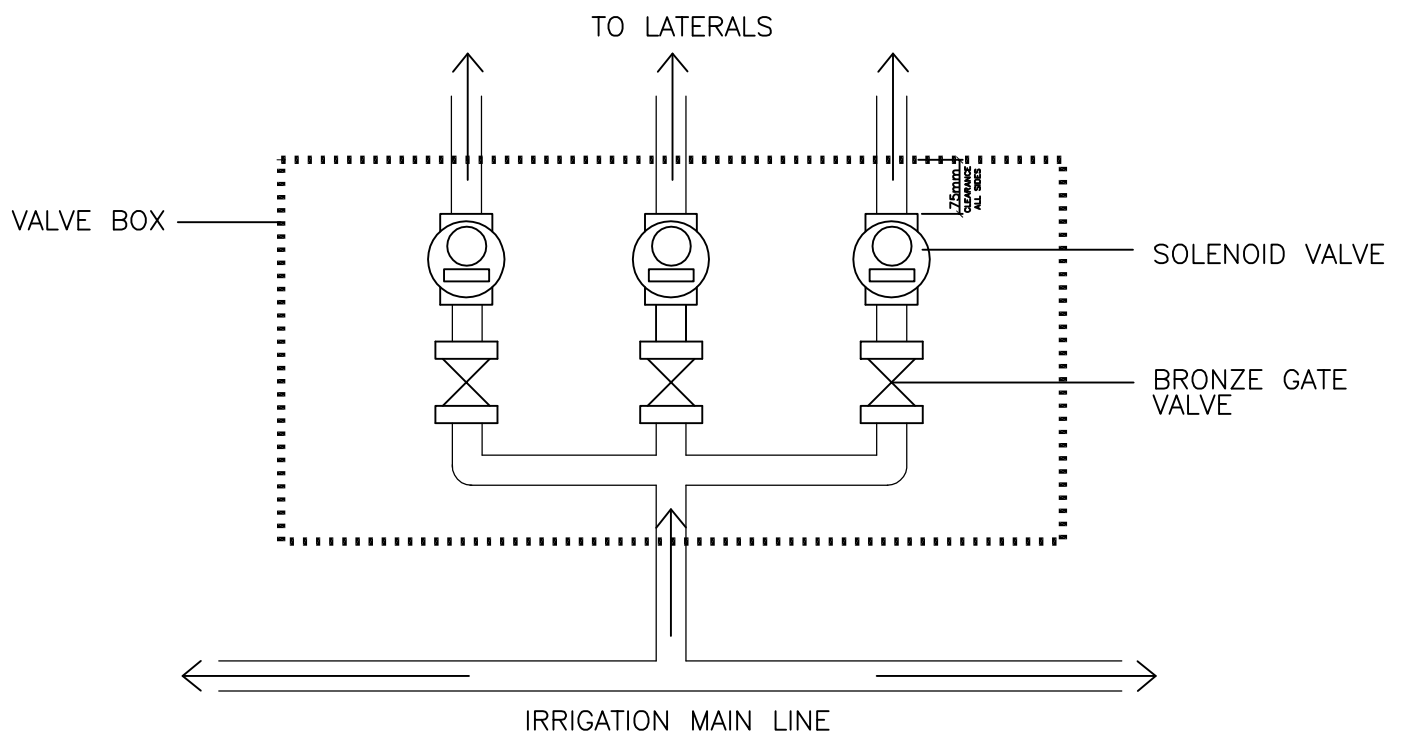
NOTE:

1. SUPPLY CONNECTION FROM MAIN TO WATER METER TO CITY OF NANAIMO ENGINEERING STANDARDS AND SPECIFICATIONS BY CITY FORCES AT OWNERS EXPENSE.



IRRIGATION
BACKFLOW PREVENTER AND
POINT OF CONNECTION

Scale	N.T.S.
Drawn	J.G.
Rev. Date:	NOV 2009
Dwg. No.	I-1

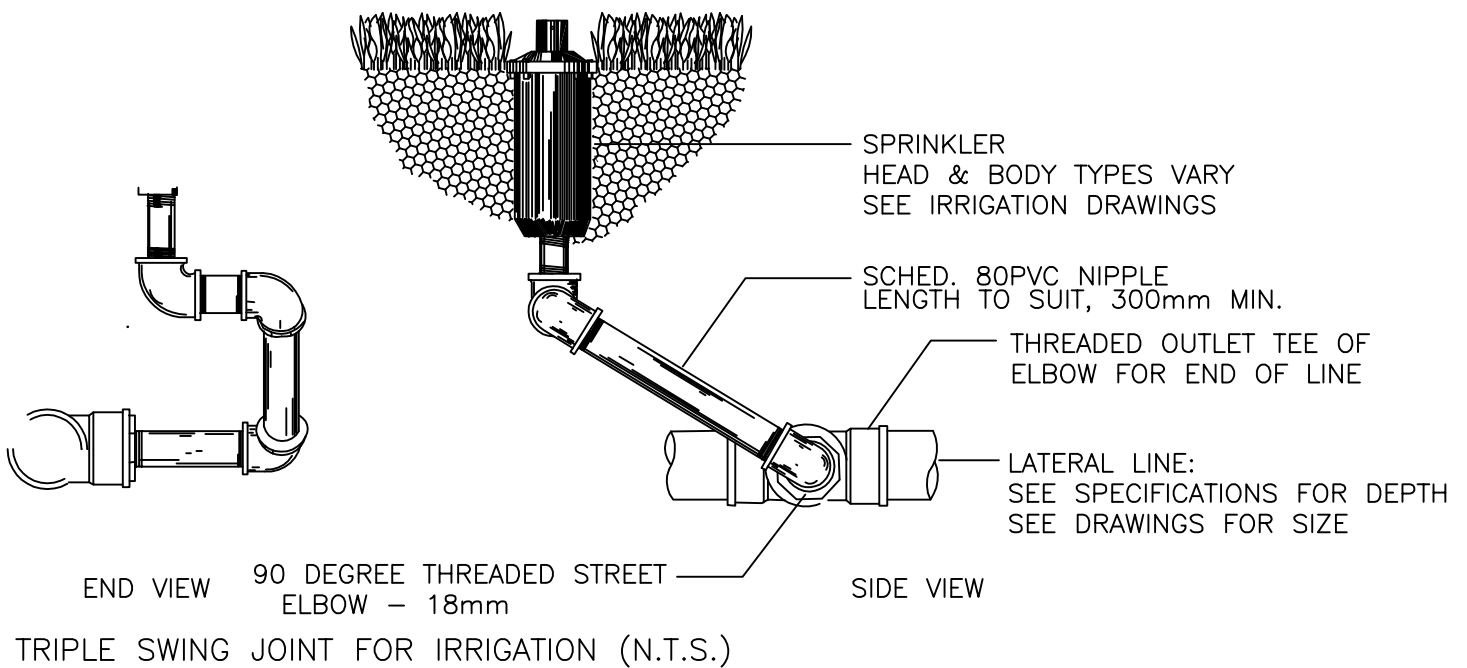


SCHEMATIC PIPING CONFIGURATION AT VALVE CLUSTER NTS



VALVE BOX SCHEMATIC
PIPING CONFIGURATION
AT VALVE CLUSTER

Scale	N.T.S.
Drawn	J.G.
Rev. Date:	DEC. 1997
Dwg. No.	I-3



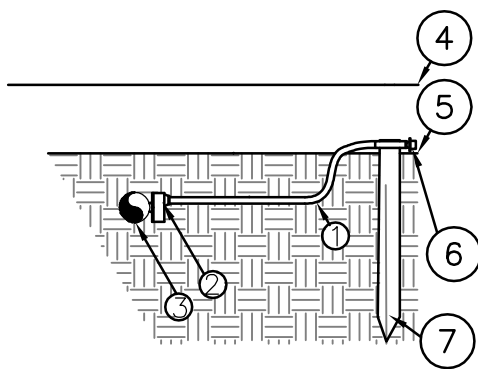
TYPICAL SPRAY SYSTEM DETAIL
SECTION VIEW

nts



TYPICAL SPRAY HEAD

Scale	N.T.S.
Drawn	J.G.
Rev. Date:	DEC. 1997
Dwg. No.	I-4



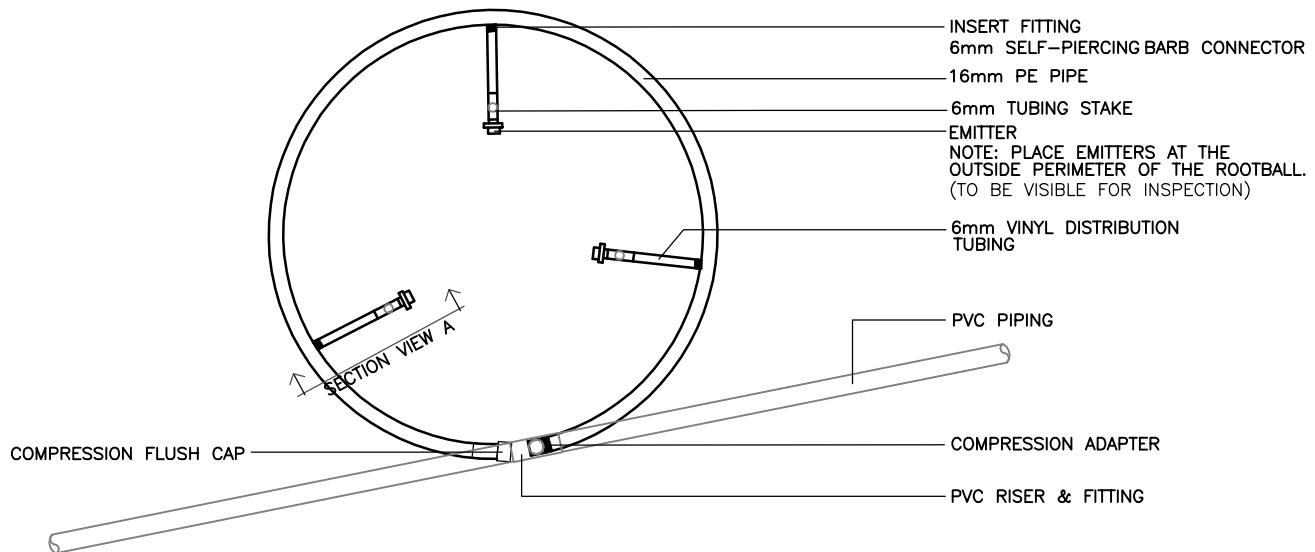
- ① 6mm VINYL DISTRIBUTION TUBING
- ② INSERT FITTING
6mm SELF-PIERCING BARB CONNECTOR
- ③ 16mm PE PIPE
- ④ TOP OF MULCH
- ⑤ TOP OF GROWING MEDIUM
- ⑥ EMITTER (TO BE VISIBLE FOR INSPECTION)
- ⑦ 6mm TUBING STAKE

TYPICAL DRIP SYSTEM DETAIL
SECTION VIEW A

nts

EMITTER REQUIREMENT SCHEDULE (REFER TO SPECIFICATIONS CLAUSE 14.5)

TREE SELECTED FROM	EMITTER QUALITY	DAILY RUN TIME
PARTS 1,2,3	3 / 7.6 l/h	30 MINS.
PART 4	4 / 26.5l/h	45 MINS.
PART 5	6 / 26.5l/h	45 MINS.



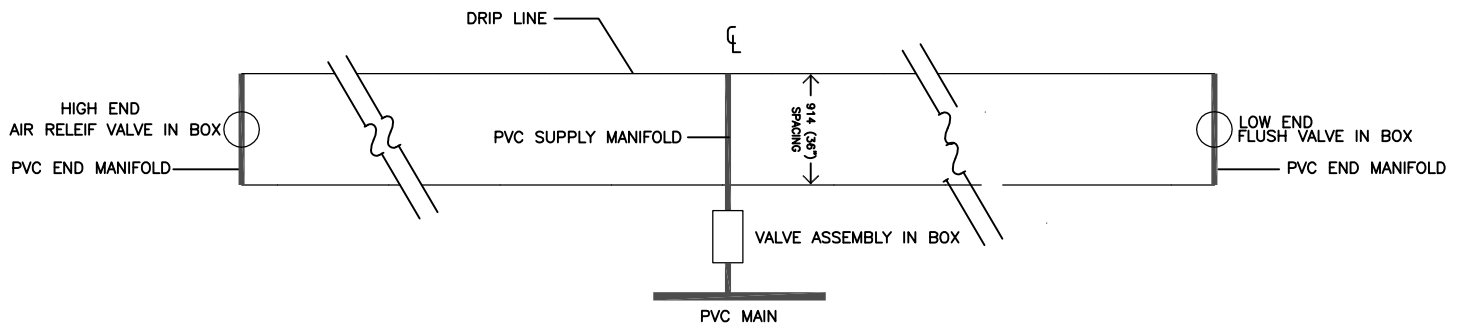
TYPICAL DRIP SYSTEM DETAIL
PLAN VIEW

nts



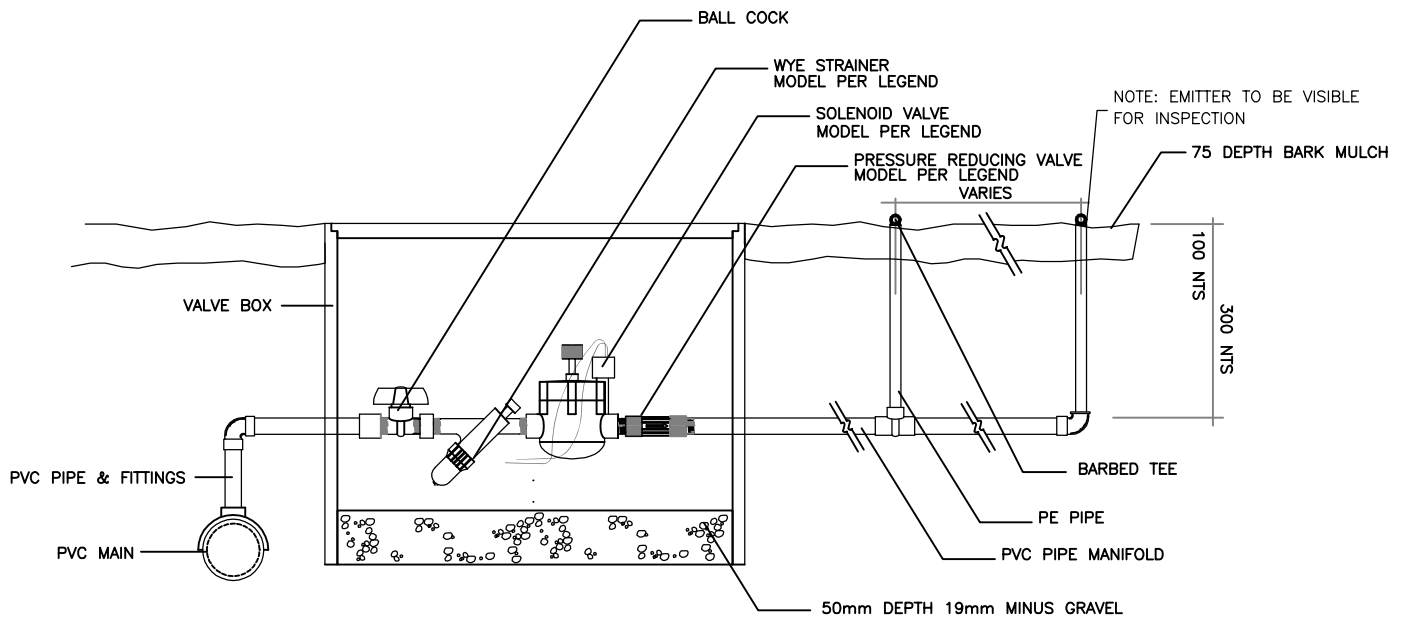
DRIP SYSTEM AT TREE

Scale	N.T.S.
Drawn	J.G.
Rev. Date:	NOV 2009
Dwg. No.	I-5



DRIP CIRCUIT SCHEMATIC LAYOUT

N.T.S.



TYPICAL DRIP VALVE ASSEMBLY AND MANIFOLD

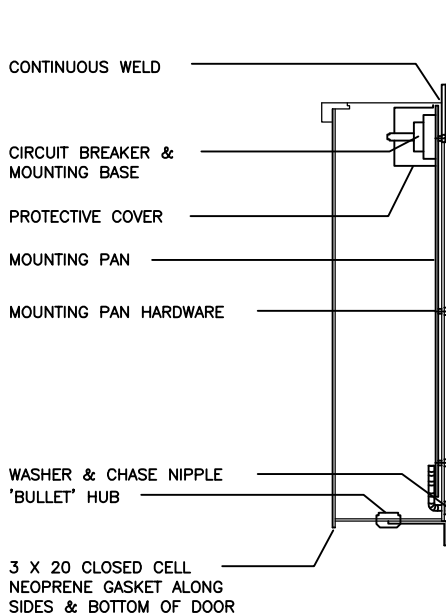
N.T.S.



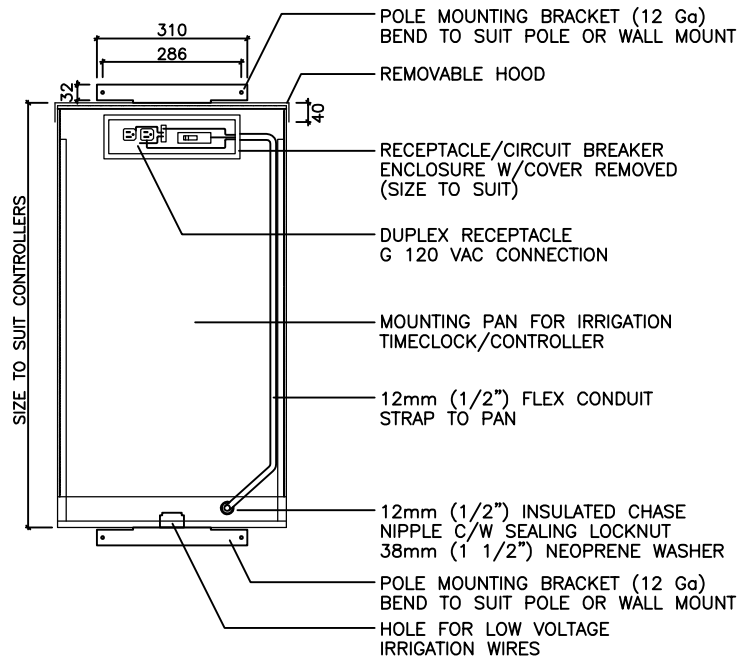
IN-LINE DRIP ASSEMBLY
AND LAYOUT

Scale	N.T.S.
Drawn	J.G.
Rev. Date:	NOV 2009
Dwg. No.	I-6

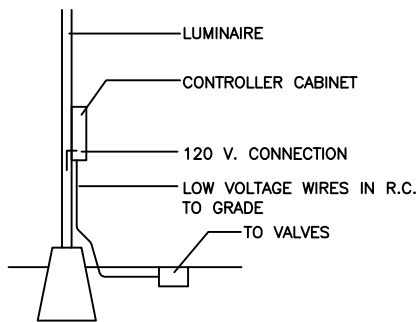
- NOTES:
- 1) ENTIRE ENCLOSURE TO BE 16 GAUGE MILD STEEL OR ALUMINUM WITH THE EXCEPTION OF THE RECEPTACLE ENCLOSURE & MOUNTING PAN WHICH SHALL BE 14 GAUGE. STEEL FINISHED WITH GREY ENAMEL, ALUMINUM CLEAR ANODIZED. ALL SEAMS SHALL BE CONTINUOUSLY WELDED.
 - 2) THE ENCLOSURE SHALL BE MANUFACTURED TO CONFORM TO C.S.A. ENCLOSURE 3 SPECIFICATIONS & SHALL BEAR APPROVAL FROM THE PROVINCIAL SAFETY BRANCH INSPECTOR.
 - 3) ALL HARDWARE (SCREWS, NUTS, ETC.) SHALL BE STAINLESS STEEL.
 - 4) DOOR TO BE FULLY GASKETTED & WITH PADLOCKING FACILITY.
 - 5) THE PANEL SHALL BEAR THE MANUFACTURER & THE PROVINCIAL APPROVAL LABELS INSIDE THE PANEL.



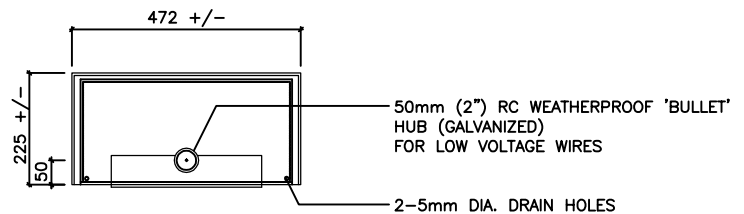
SECTION



FRONT VIEW WITH DOOR REMOVED



MOUNTING DETAIL



BOTTOM VIEW

IRRIGATION CONTROLLER CABINET DETAILS

N.T.S.



IRRIGATION CONTROLLER
CABINET DETAILS

Scale	N.T.S.
Drawn	J.G.
Rev. Date:	DEC. 1997
Dwg. No.	I-7