

Nanaimo City Hall

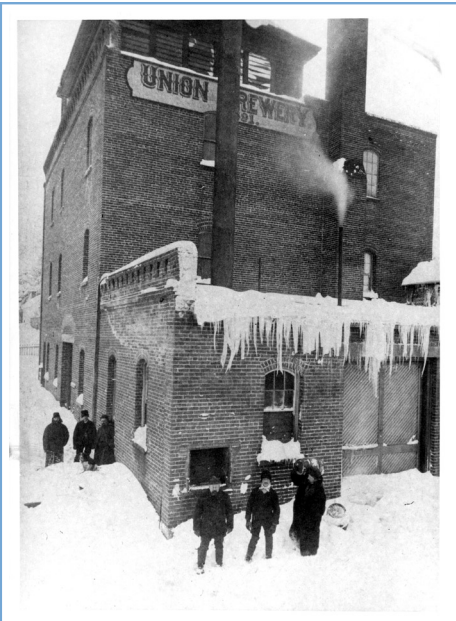


Franklyn House

In 1862, Captain William Hales Franklyn built this large house on the site of the current City Hall. Franklyn House, which featured imported wood and bricks, was a notable exception in a community composed largely of modest miner's houses and commercial buildings clustered around the waterfront and mine pit heads. The house was demolished in the 1950s.

Union Brewery

The Union Brewery was established on this site in 1891 when several smaller operations merged. In addition to the brewery, which produced up to 3,000 gallons of beer a day in its heyday, this building housed an ice plant and included cold storage space for local merchants.



The Brewery was operated by the Reifel family who lived in Franklyn House until shortly before its demolition. In 1948-9, the brewery was demolished to make way for the new City Hall.

City Hall

This building was officially opened in 1951 at a ceremony that attracted over 1000 people. The elegant design was Nanaimo's first venture into the new International Style and, at the time of its construction, the building was considered one of the most sophisticated city halls in Canada.

