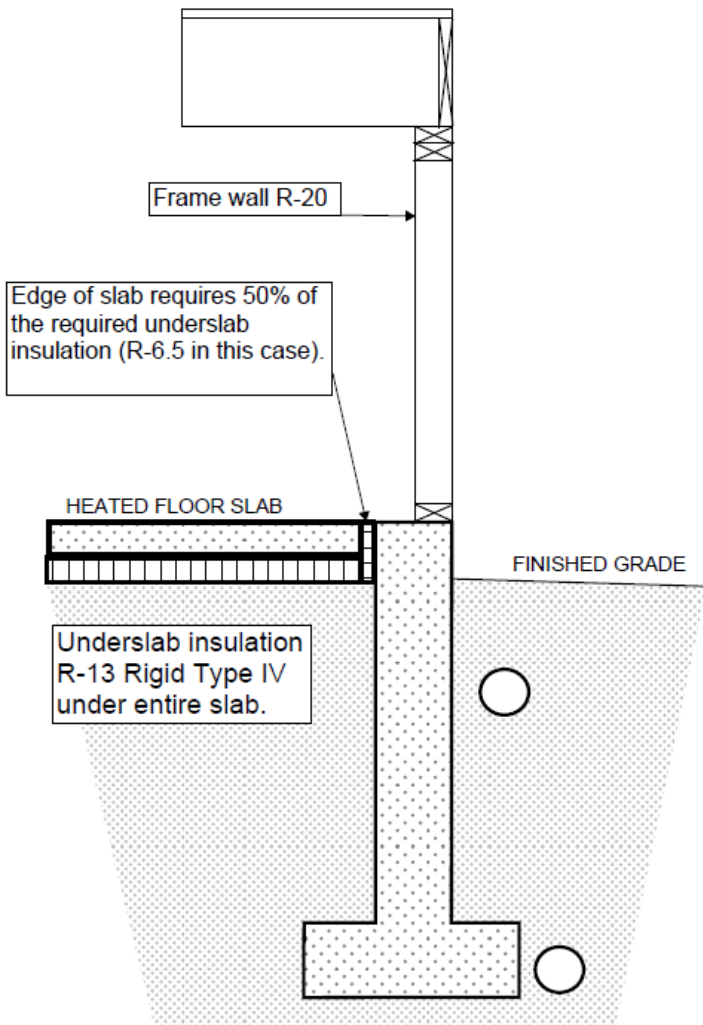


Insulation Requirements for Residential Installations

Overview: Below are sample drawings of insulation for Foundation and Underslab Insulation installations in residential building projects.

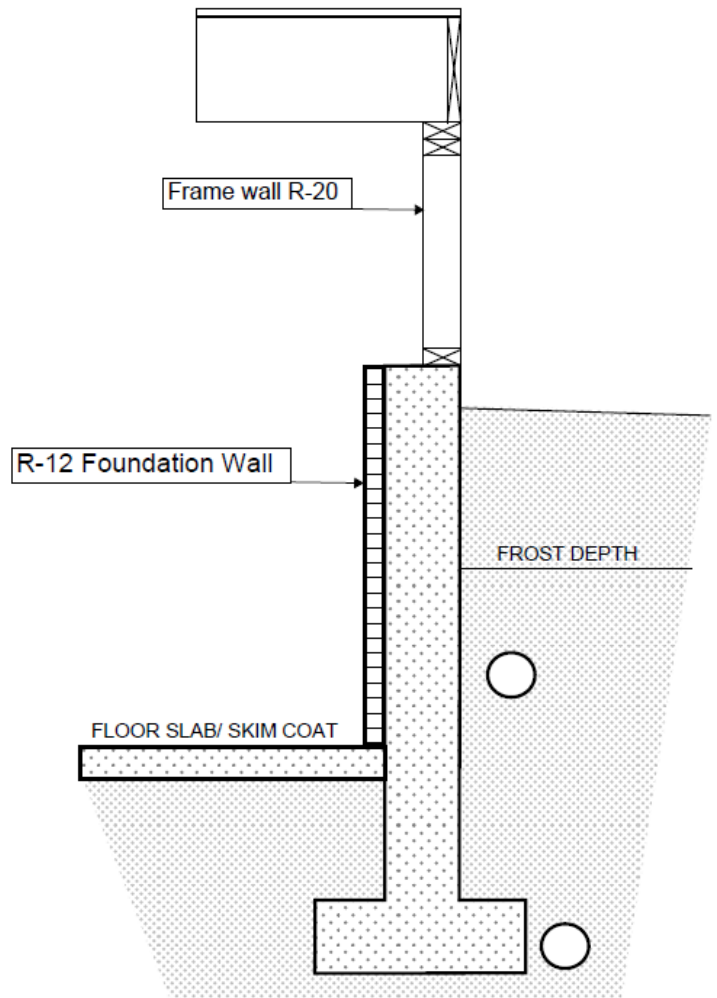
Heated Floor Slab

Minimum Insulation Requirement
(Some Details Omitted for Clarity)



Slab or Crawl Space Skim Coat Below Frost Line

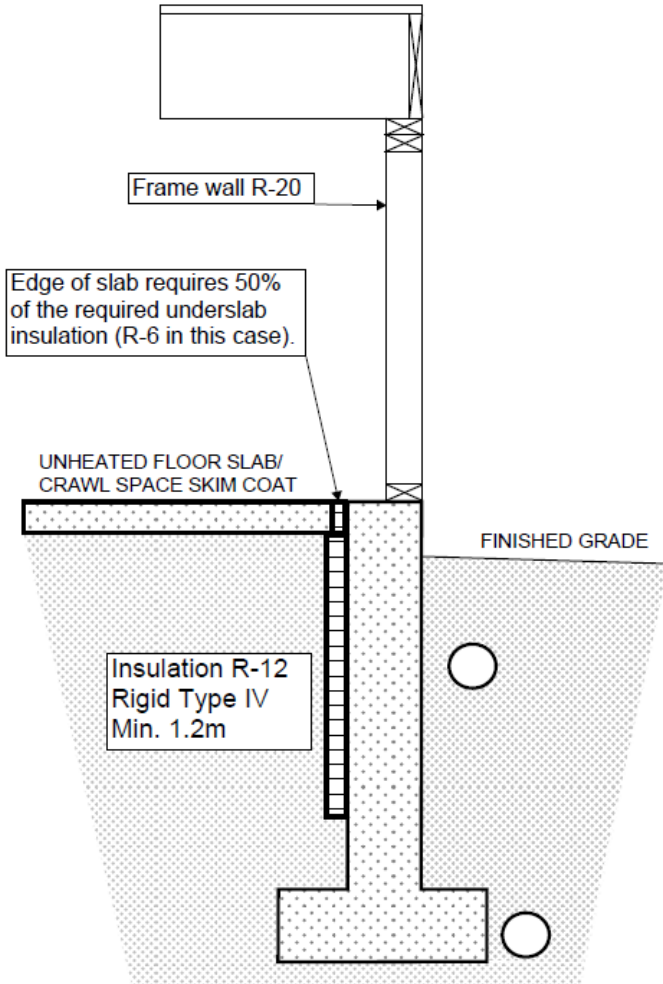
Minimum Insulation Requirement
(Some Details Omitted for Clarity)



Insulation Requirements

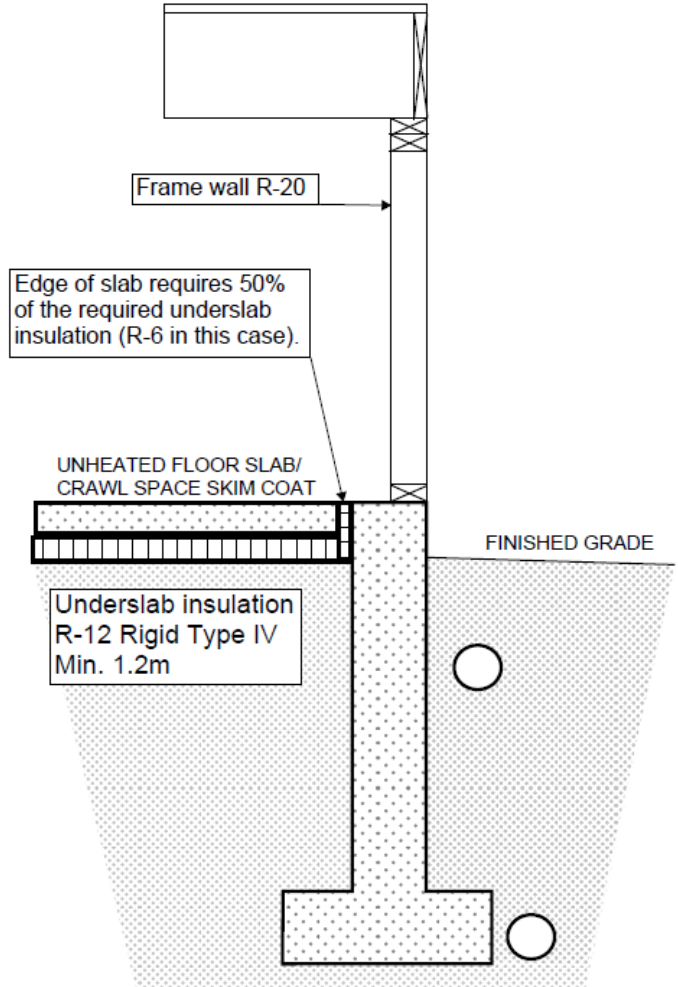
Slab or Crawl Space Skim Coat Above Frost Line

Minimum Insulation Requirement
(Some Details Omitted for Clarity)



Slab or Crawl Space Skim Coat Above Frost Line

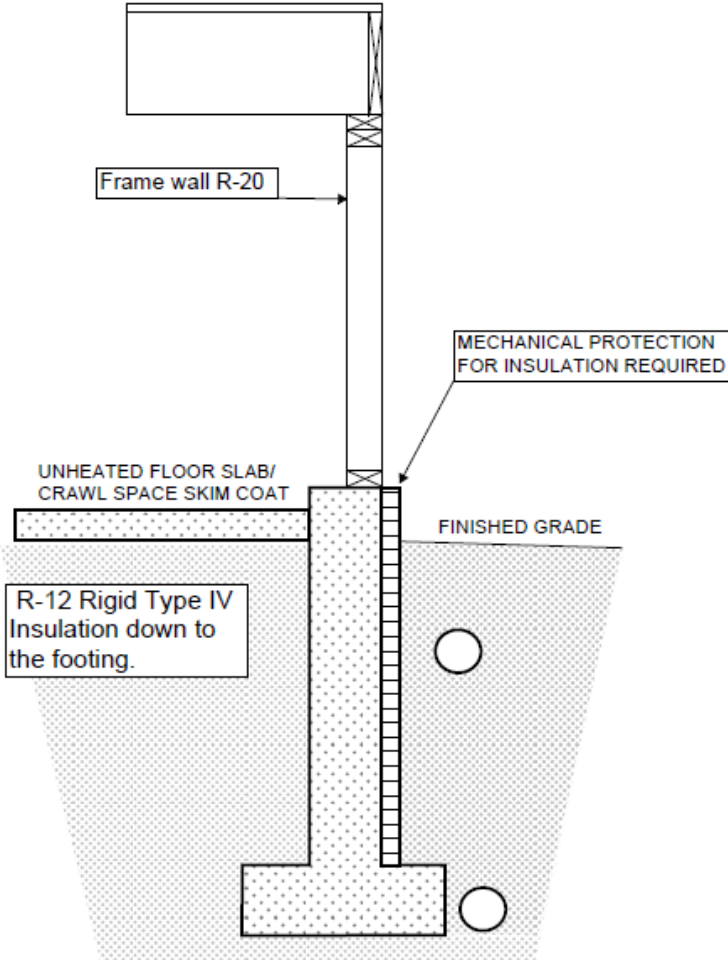
Minimum Insulation Requirement
(Some Details Omitted for Clarity)



Insulation Requirements

Slab or Crawl Space Skim Coat Above Frost Line Insulation on Exterior

Minimum Insulation Requirement
(Some Details Omitted for Clarity)



Corbel Detail

(Some Details Omitted for Clarity)

