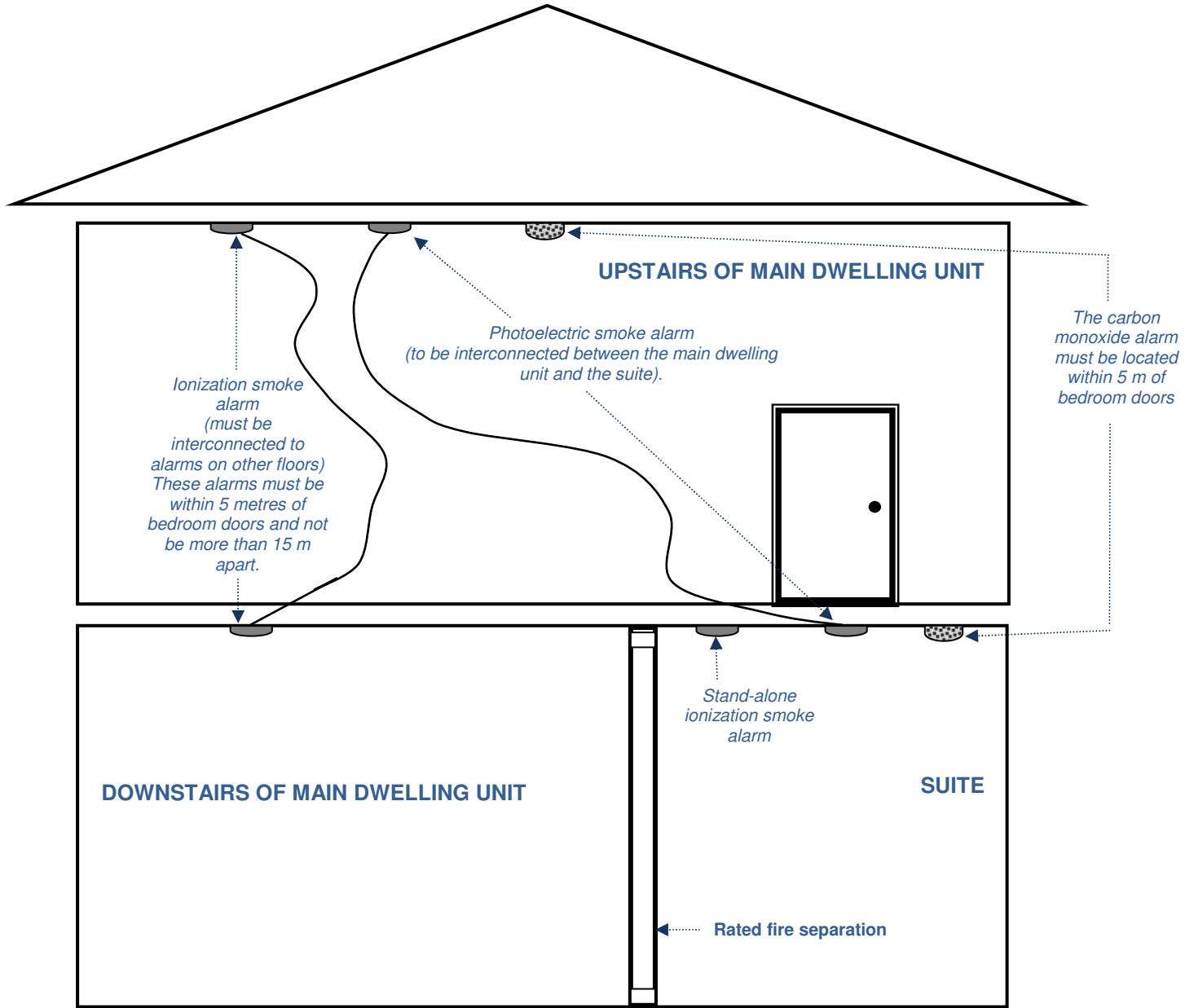


## Installation Guide for Suite / Main Dwelling Alarms



## B.C. Building Code Requirements

---

### **Smoke Alarms**

9.10.19.2 Within dwelling units, sufficient alarms shall be installed so that:

1. there is at least one smoke alarm on each floor level, including basements, that is 900 mm or more above or below an adjacent floor level;
2. each bedroom is protected by a smoke alarm either inside the bedroom or, if outside, within 5 m, measured following corridors and doorways, or the bedroom door; and
3. the distance, measured following corridors and doorways, from any point on a floor level to a smoke alarm on the same level does not exceed 15 m.

9.36.2.20 An additional smoke alarm of photoelectric type conforming to CAN/ULC-S531 "Standard for Smoke Alarms," shall be installed in each suite. Photoelectric smoke alarms shall be wired so that the activation of the additional alarm in one suite will cause the additional alarm in the other suite to sound.

### **Carbon Monoxide Alarms**

9.32.4.2 Carbon Monoxide alarms are required in every building that contains a residential occupancy that also contains a fuel-burning appliance or storage garage. The alarm must be installed either inside each bedroom, or if outside, within 5 m, measured following corridors and doorways, of each bedroom door.

---

In a typical installation, the suite and main dwelling have interconnected photoelectric smoke alarms. The suite will have a stand-alone ionization smoke alarm and the main dwelling will have interconnected ionization smoke alarms on each level. Both will require stand-alone carbon monoxide alarms if there is a fuel-fired appliance in the building or if there is an attached garage.