

TERMINAL AVENUE

Preliminary plant list

Riparian Area

Key	Qty	Botanical Name	Common Name	Pot Size
<b>Evergreen Trees</b>				
Pmen		Pseudotsuga menziesii	Douglas Fir	From site
<b>Deciduous Trees</b>				
Cn		Cornus nuttallii	Pacific Dogwood	#1
Cd		Crataegus douglasii	Douglas Hawthorn	#5
PF		Pyrus fusca	Pacific Crabapple	#5
<b>Shrubs</b>				
Aa		Amelanchier alnifolia	Saskatoonberry	#1
Oc		Oemleria cerasiformis	Indian Plum	#1
Rn		Rosa nutkana	Nootka Rose	#1
Rp		Rubus parviflorus	Thimbleberry	#1
Rs		Rubus spectabilis	Salmonberry	#1
Vo		Vaccinium ovatum	Evergreen Huckleberry	#1
Vp		Vaccinium parvifolium	Red Huckleberry	#1
<b>Bioswale plants</b>				
Co		Carex obnupta	Slough Sedge	plugs
Ie		Iris ensata	Japanese Iris	1 gall
Sm		Scirpus microcarpus	Small flowered Bullrush	plugs

North and west gardens/streetscape

Key	Qty	Botanical Name	Common Name	Pot Size
<b>Evergreen Trees</b>				
Pmen		Pseudotsuga menziesii	Douglas Fir	From site
<b>Deciduous Trees</b>				
Ar		Acer rubrum red Sunset	Red Maple	6 cm cal
Cn		Cornus eddies white wonder	White flowering Dogwood	6 cm cal
Sp		Stewartia japonica	Japanese Stewartia	6 cm cal
PF		Pyrus fusca	Pacific Crabapple	#5
<b>Shrubs</b>				
Aa		Amelanchier alnifolia	Saskatoonberry	#1
Oc		Oemleria cerasiformis	Indian Plum	#1
Rs		Ribes sanguineum	Red Flowering Currant	#1
Rn		Rosa nutkana	Nootka Rose	#1
Rp		Rubus parviflorus	Thimbleberry	#1
Rs		Rubus spectabilis	Salmonberry	#1
Vo		Vaccinium ovatum	Evergreen Huckleberry	#1
Vp		Vaccinium parvifolium	Red Huckleberry	#1
<b>Ground Covers/perennials</b>				
At		Achylis triphylla	Vanilla Leaf	4 cm
Auu		Arctostaphylos uva-ursi	Kinnikinnick	4 cm
Am		Armeria maritima	Thrift	4cm
Df		Dicentra formosa	Bleeding Heart	4 cm
Ei		Erigeron lanatum	Woolly sunflower	4cm
Fv		Fragaria vesca	Woodland Strawberry	4cm
Gs		Gaultheria shallon	Salal	4 cm
Hm		Heuchera micrantha	Alumroot	#1
Mn		Mahonia nervosa	Dull Oregon Grape	#1
Oo		Oxalis oregana	Oxalis	10 cm
Ss		Sedum spathulifolium	Stonecrop	10 cm
<b>Bulbs</b>				
Ac		Allium cernuum	Nodding Onion	bulbs
Cq		Camassia quamash	Common Camas	bulbs

<b>Ferns</b>				
De		Dryopteris expansa	Spiny Wood Fern	#1
Pm		Polystichum munitum	Sword Fern	#1
<b>Vines</b>				
Lc		Lonicera ciliosa	Western Honeysuckle	#1
Lp		Lonicera periclymenum	Woodbine Honeysuckle	#1

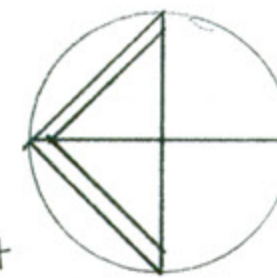


17.5.19 SUBMITTED FOR DP  
 DATE REV. DESCRIPTION  
 CONSULTANT  
**VICTORIA DRAKEFORD**  
 B.Sc.M. Phil. B.Sci. C.M.A.  
**LANDSCAPE ARCHITECT**  
 236 Pine St. Nanaimo,  
 B.C. V9R-2B6  
 250-754-4335  
 victoria@island.net

PROJECT  
**CALEDONIA APARTMENTS**  
 210 CALEDONIA AVE

SHEET TITLE  
**CONCEPTUAL LANDSCAPE PLAN**

SCALE 1" = 30' DATE 13.05.19  
 DRAWN VJD CHECKED  
 PROJECT NUMBER CAL 15  
 DRAWING NUMBER LI





**TREE MANAGEMENT PLAN AREAS**

Area	Tree #	Tree species	Diameter in cm	ST - Significant Tree	
A	<b>Area A</b> Steep east facing slope 3 - 20' - 30' Douglas Fir Blackberries and Buddleia				
	1	Alder	60		
	2	Pacific Willow	20	ST	
	3	Big Leaf Maple	10		
	4	Alders (x2)	45		
	5	Arbutus	45		
	6	Alder	60		
	7	Alder	40		
	8	Alder	50		
	9	Big Leaf Maple	20		
10	Alder	30			
B	<b>Area B</b> Level area, dry, Broom, Blackberries, young fir nursery				
C	<b>Area C</b> East facing sloped/level area, moist, Bigleaf Maples, Alders, Indian Plum, Elderberry, Ocean Spray, blackberries, daphne				
	11	Alder (x2)	50		
	12	Big Leaf Maple	sapling		
	13	Big Leaf Maple	60		
	14	Big Leaf Maple	30		
	15	Alder	60		
	16	Big Leaf Maple	70		
	17	Big Leaf Maple	70		
	18	Big Leaf Maple	70		
	19	Big Leaf Maple (multistemmed)	45, 70		
	20	Big Leaf Maple	60		
21	Black Locust	60 to 70			
D	<b>Area D</b> South east slopes Young maple and fir, blackberries and broom				
	22	Douglas Fir	60		
	23	Douglas Fir	70		
24	Douglas Fir	60			
E	<b>Area E</b> Level, dry area Blackberries, broom				
F	<b>Area F</b> East facing slopes Approximately 8 Bigleaf maples 30- 45 cm diameter Indian Plum, Snowberry, Daphne and Blackberries  Very steep South facing slopes and rock bluffs Area of approximately 4 large garry oaks, 12 maples, blackberries and ivy				
	G	<b>Area G</b> Level dry area Site of old powerhouse Invasive plants, blackberries, broom, buddleia, tansy			

**Preliminary plant list**

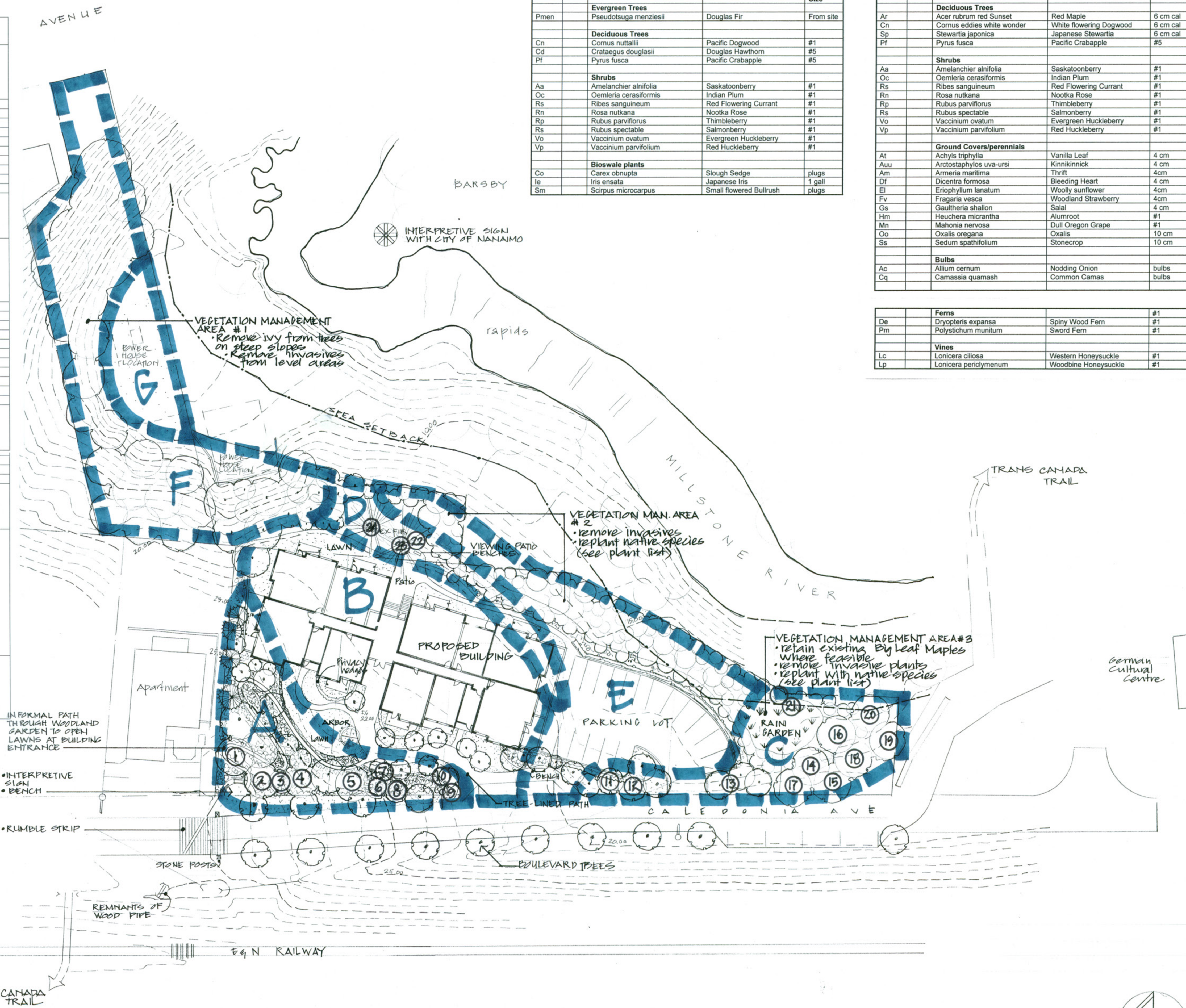
**Riparian Area**

Key	Qty	Botanical Name	Common Name	Pot Size
<b>Evergreen Trees</b>				
Pmen		Pseudotsuga menziesii	Douglas Fir	From site
<b>Deciduous Trees</b>				
Cn		Cornus nuttallii	Pacific Dogwood	#1
Cd		Crataegus douglasii	Douglas Hawthorn	#5
Pf		Pyrus fusca	Pacific Crabapple	#5
<b>Shrubs</b>				
Aa		Amelanchier alnifolia	Saskatoonberry	#1
Oc		Oemleria cerasiformis	Indian Plum	#1
Rf		Ribes sanguineum	Red Flowering Currant	#1
Rn		Rosa nutkana	Nootka Rose	#1
Rp		Rubus parviflorus	Thimbleberry	#1
Rs		Rubus spectabile	Salmonberry	#1
Vo		Vaccinium ovatum	Evergreen Huckleberry	#1
Vp		Vaccinium parvifolium	Red Huckleberry	#1
<b>Bioswale plants</b>				
Co		Carex obnupta	Slough Sedge	plugs
Ie		Iris ensata	Japanese Iris	1 gall
Sm		Scirpus microcarpus	Small flowered Bullrush	plugs

**North and west gardens/streetscape**

Key	Qty	Botanical Name	Common Name	Pot Size
<b>Evergreen Trees</b>				
Pmen		Pseudotsuga menziesii	Douglas Fir	From site
<b>Deciduous Trees</b>				
Ar		Acer rubrum red Sunset	Red Maple	6 cm cal
Cn		Cornus eddies white wonder	White flowering Dogwood	6 cm cal
Sp		Stewartia japonica	Japanese Stewartia	6 cm cal
Pf		Pyrus fusca	Pacific Crabapple	#5
<b>Shrubs</b>				
Aa		Amelanchier alnifolia	Saskatoonberry	#1
Oc		Oemleria cerasiformis	Indian Plum	#1
Rf		Ribes sanguineum	Red Flowering Currant	#1
Rn		Rosa nutkana	Nootka Rose	#1
Rp		Rubus parviflorus	Thimbleberry	#1
Rs		Rubus spectabile	Salmonberry	#1
Vo		Vaccinium ovatum	Evergreen Huckleberry	#1
Vp		Vaccinium parvifolium	Red Huckleberry	#1
<b>Ground Covers/perennials</b>				
At		Achylis triphylla	Vanilla Leaf	4 cm
Auu		Arctostaphylos uva-ursi	Kinnikinnick	4 cm
Am		Armeria maritima	Thrift	4cm
Df		Dicentra formosa	Bleeding Heart	4 cm
Ei		Eriophyllum lanatum	Woolly sunflower	4cm
Fv		Fragaria vesca	Woodland Strawberry	4cm
Gs		Gaultheria shallon	Salal	4 cm
Hm		Heuchera micrantha	Alumroot	#1
Mn		Mahonia nervosa	Dull Oregon Grape	#1
Oo		Oxalis oregana	Oxalis	10 cm
Ss		Sedum spathulifolium	Stonecrop	10 cm
<b>Bulbs</b>				
Ac		Allium cernuum	Nodding Onion	bulbs
Cq		Camassia quamash	Common Camas	bulbs

<b>Ferns</b>				
De		Dryopteris expansa	Spiny Wood Fern	#1
Pm		Polystichum munium	Sword Fern	#1
<b>Vines</b>				
Lc		Lonicera ciliosa	Western Honeysuckle	#1
Lp		Lonicera periclymenum	Woodbine Honeysuckle	#1

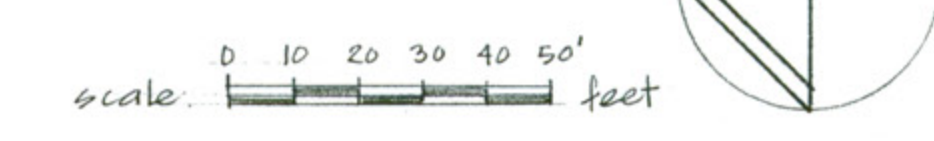


17.5.19 SUBMITTED FOR DP  
 DATE REV. DESCRIPTION  
 CONSULTANT  
**VICTORIA DRAKEFORD**  
 B.Sc. M.Phil. R.C.S.I. C.M.A.  
**LANDSCAPE ARCHITECT**  
 236 Pine St. Nanaimo,  
 B.C. V9R-2B6  
 250-754-4335  
 victoria@island.net

PROJECT  
**CALEDONIA APARTMENTS**  
 210 CALEDONIA AVE

SHEET TITLE  
**TREE MANAGEMENT PLAN**

SCALE 1" = 30' DATE 17.05.19  
 DRAWN VJD CHECKED  
 PROJECT NUMBER CAL 15  
 DRAWING NUMBER L2





TERMINAL AVENUE

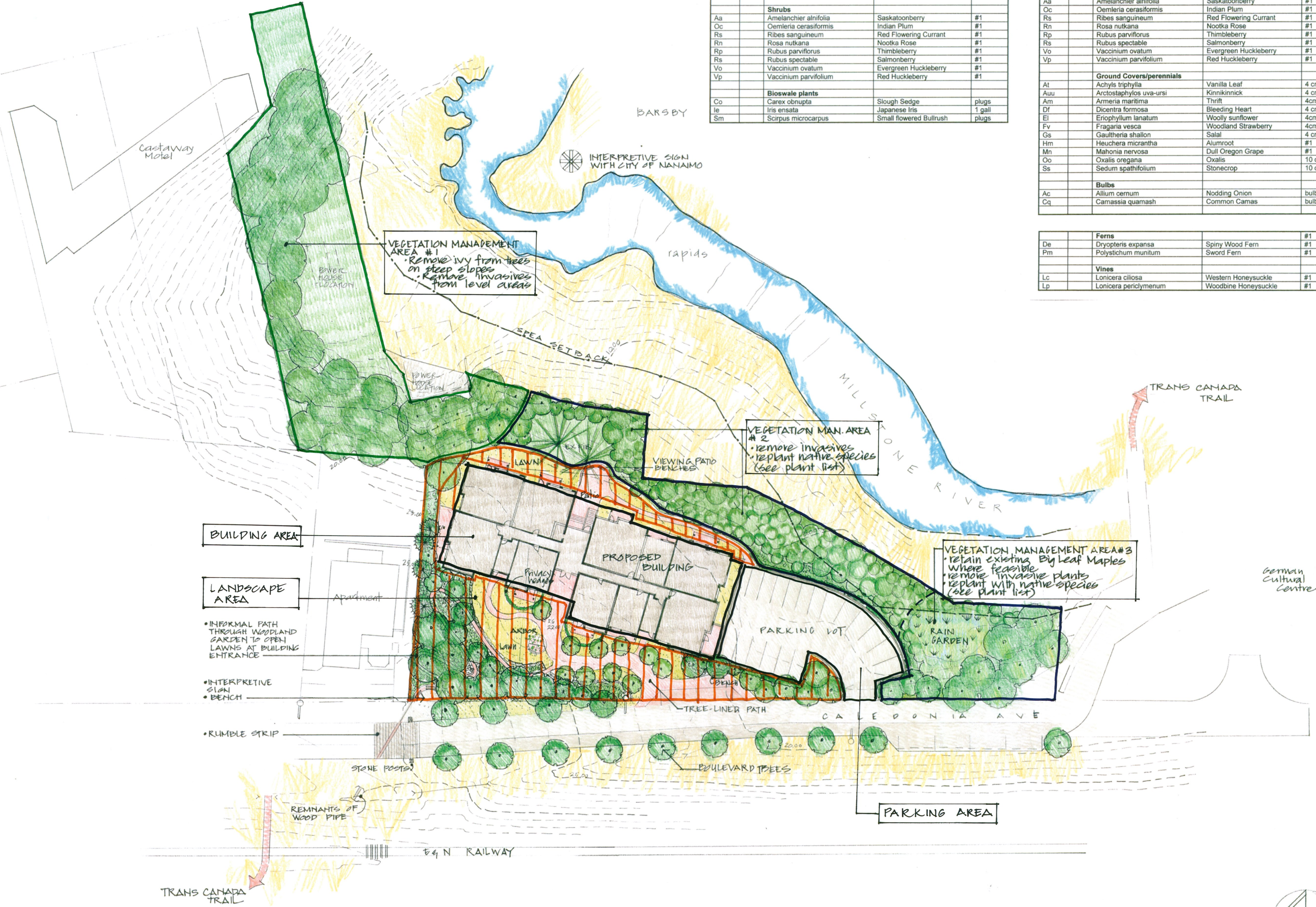
Preliminary plant list

Riparian Area

Key	Qty	Botanical Name	Common Name	Pot Size
<b>Evergreen Trees</b>				
Pmen		Pseudotsuga menziesii	Douglas Fir	From site
<b>Deciduous Trees</b>				
Cn		Cornus nuttallii	Pacific Dogwood	#1
Cd		Crataegus douglasii	Douglas Hawthorn	#5
Pf		Pyrus fusca	Pacific Crabapple	#5
<b>Shrubs</b>				
Aa		Amelanchier alnifolia	Saskatoonberry	#1
Oc		Oemleria cerasiformis	Indian Plum	#1
Rs		Ribes sanguineum	Red Flowering Currant	#1
Rn		Rosa nutkana	Nootka Rose	#1
Rp		Rubus parviflorus	Thimbleberry	#1
Rs		Rubus spectabile	Salmonberry	#1
Vo		Vaccinium ovalum	Evergreen Huckleberry	#1
Vp		Vaccinium parvifolium	Red Huckleberry	#1
<b>Bioswale plants</b>				
Co		Carex obnupta	Slough Sedge	plugs
Ie		Iris ensata	Japanese Iris	1 gall
Sm		Scirpus microcarpus	Small flowered Bullrush	plugs

North and west gardens/streetscape

Key	Qty	Botanical Name	Common Name	Pot Size
<b>Evergreen Trees</b>				
Pmen		Pseudotsuga menziesii	Douglas Fir	From site
<b>Deciduous Trees</b>				
Ar		Acer rubrum red Sunset	Red Maple	6 cm cal
Cn		Cornus eddies white wonder	White flowering Dogwood	8 cm cal
Sp		Stewartia japonica	Japanese Stewartia	6 cm cal
Pf		Pyrus fusca	Pacific Crabapple	#5
<b>Shrubs</b>				
Aa		Amelanchier alnifolia	Saskatoonberry	#1
Oc		Oemleria cerasiformis	Indian Plum	#1
Rs		Ribes sanguineum	Red Flowering Currant	#1
Rn		Rosa nutkana	Nootka Rose	#1
Rp		Rubus parviflorus	Thimbleberry	#1
Rs		Rubus spectabile	Salmonberry	#1
Vo		Vaccinium ovalum	Evergreen Huckleberry	#1
Vp		Vaccinium parvifolium	Red Huckleberry	#1
<b>Ground Covers/perennials</b>				
At		Achylis triphylla	Vanilla Leaf	4 cm
Auu		Arctostaphylos uva-ursi	Kinnikinnick	4 cm
Am		Armeria maritima	Thrift	4cm
Df		Dicentra formosa	Bleeding Heart	4 cm
Ei		Eriophyllum lanatum	Woolly sunflower	4cm
Fv		Fragaria vesca	Woodland Strawberry	4cm
Gs		Gaultheria shallon	Salal	4 cm
Hm		Heuchera micrantha	Alumroot	#1
Mn		Mahonia nervosa	Dull Oregon Grape	#1
Oo		Oxalis oregana	Oxalis	10 cm
Ss		Sedum spathulifolium	Stonecrop	10 cm
<b>Bulbs</b>				
Ac		Allium cernuum	Nodding Onion	bulbs
Cq		Camassia quamash	Common Camas	bulbs
<b>Ferns</b>				
De		Dryopteris expansa	Spiny Wood Fern	#1
Pm		Polystichum munifolium	Sword Fern	#1
<b>Vines</b>				
Lc		Lonicera ciliosa	Western Honeysuckle	#1
Lp		Lonicera periclymenum	Woodbine Honeysuckle	#1



DATE	REV.	DESCRIPTION
17.05.15		SUBMITTED FOR DP

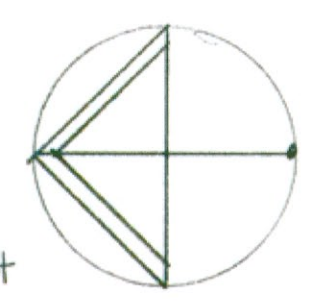
CONSULTANT

**VICTORIA DRAKEFORD**  
B.Sc. M. Plan. BCIA CMA  
LANDSCAPE ARCHITECT  
236 Pine St. Nanaimo,  
B.C. V9R-2B6  
250-754-4335  
victoria@island.net

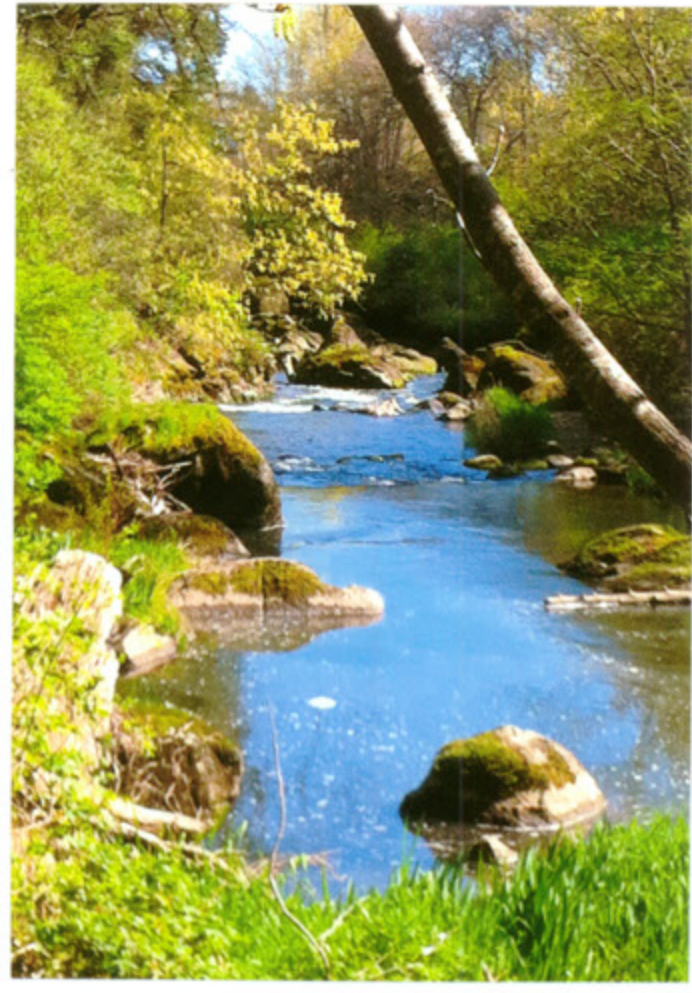
PROJECT  
**CALEDONIA APARTMENTS**  
210 CALEDONIA AVE

SHEET TITLE  
**VEGETATION MANAGEMENT PLAN**

SCALE	1" = 30'-0" DATE	15.05.15
DRAWN	VID	CHECKED
PROJECT NUMBER	CAL 15	
DRAWING NUMBER	L 3	







MILLSTONE RIVER VALLEY



BELIEVE IT OR NOT  
THIS GUY WAS  
BORN IN 1801  
HE DIED IN 1801  
HE WAS BORN IN  
ROSELAND AND DIED  
IN ROSSELAND  
IT'S DEFINITELY THE SAME  
COUNTRY AND NAME  
BUT AN UTILITY  
NOT LIKELY FROM  
ELECTRIC LIGHT POWER AND  
HEATING COMPANY LIMITED  
1770 ON LEE ST. B.C.

NANAIMO ELECTRIC LIGHT POWER & HEATING Co.



caledonia streetscape



Pedestrian-Cyclist route



traffic calming



public seating



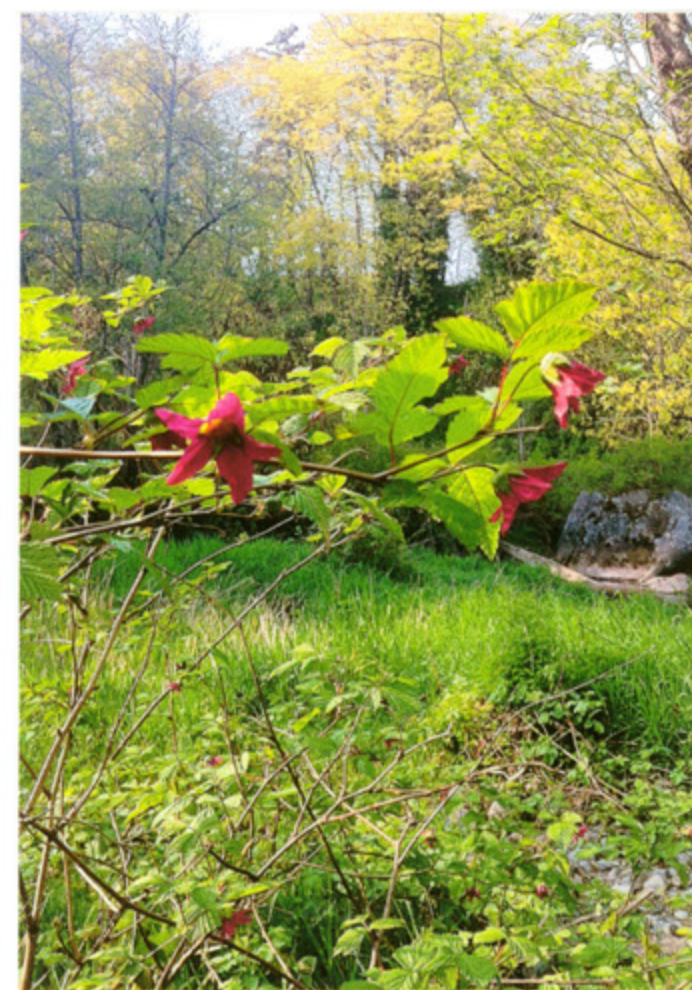
interpretive signs



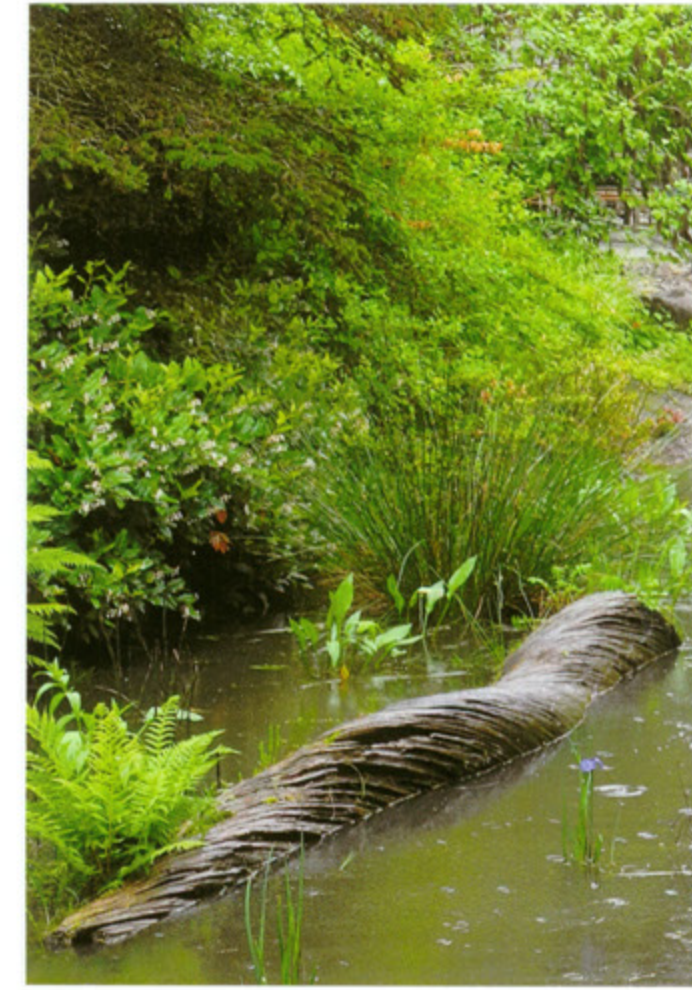
way finding



a clearing in the forest



restoring native plants



rainwater management



site history reflected in materials used for site amenities



S I T E C H A R A C T E R      o f      D E S I G N      E L E M E N T S