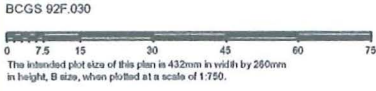


REFERENCE PLAN OF LOTS 5 AND 6, SECTION 3,
WELLINGTON DISTRICT, PLAN 13166
PURSUANT TO SECTION 100(1)(B), LAND TITLE ACT

PLAN EPP7500



LEGEND

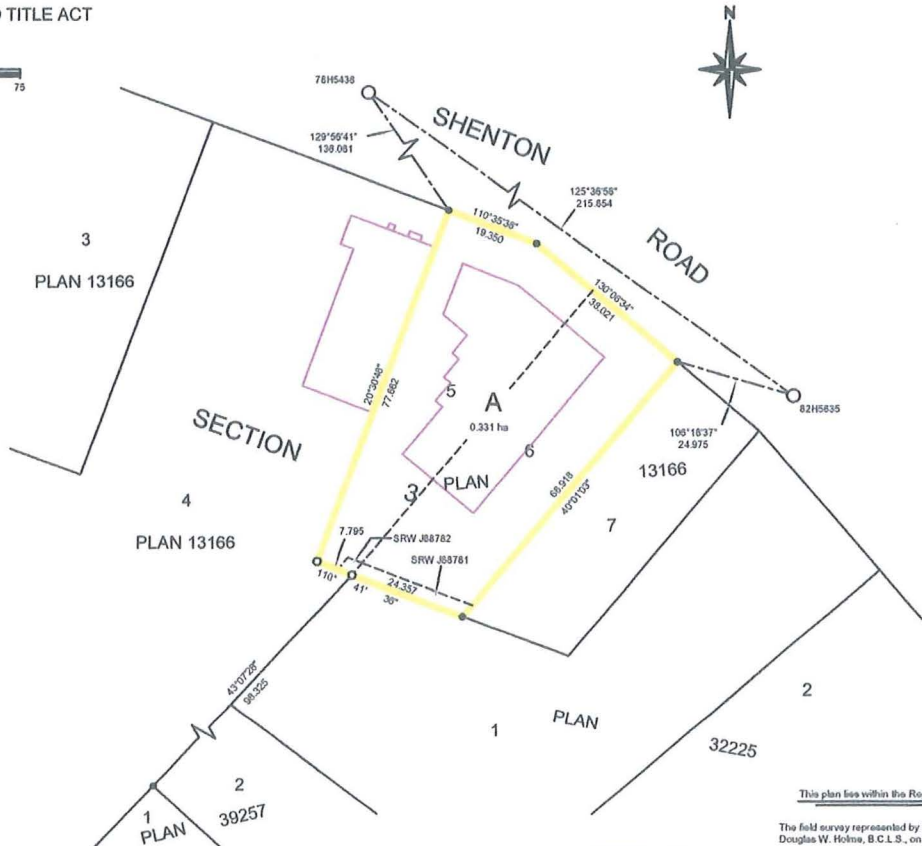
- Found Placed
- Standard Iron Post
 - Control Monument

All distances are shown in metres

Integrated Survey Area No. 20, Nanaimo, NAD83 (CSRS)

Grid bearings are derived from observations between control monuments 76H5438 and 82H5635

This plan shows horizontal ground-level distances except where otherwise noted. To compute grid distances multiply ground-level distances by a combined factor of 0.99995500



J. E. ANDERSON & ASSOCIATES
B.C. Land Surveyors - Consulting Engineers
Victoria - Nanaimo - Parksville, B.C.
File: 67068

This plan lies within the Regional District of Nanaimo

The field survey represented by this plan was completed by Douglas W. Holme, B.C.L.S., on the 17th day of May, 2010.