

COLLIERY DAM PARK

Construction of Auxiliary Spillway

V-3

CLOSURE OF LOWER COLLIERY DAM FROM SEPT 15 TO 20, 2015

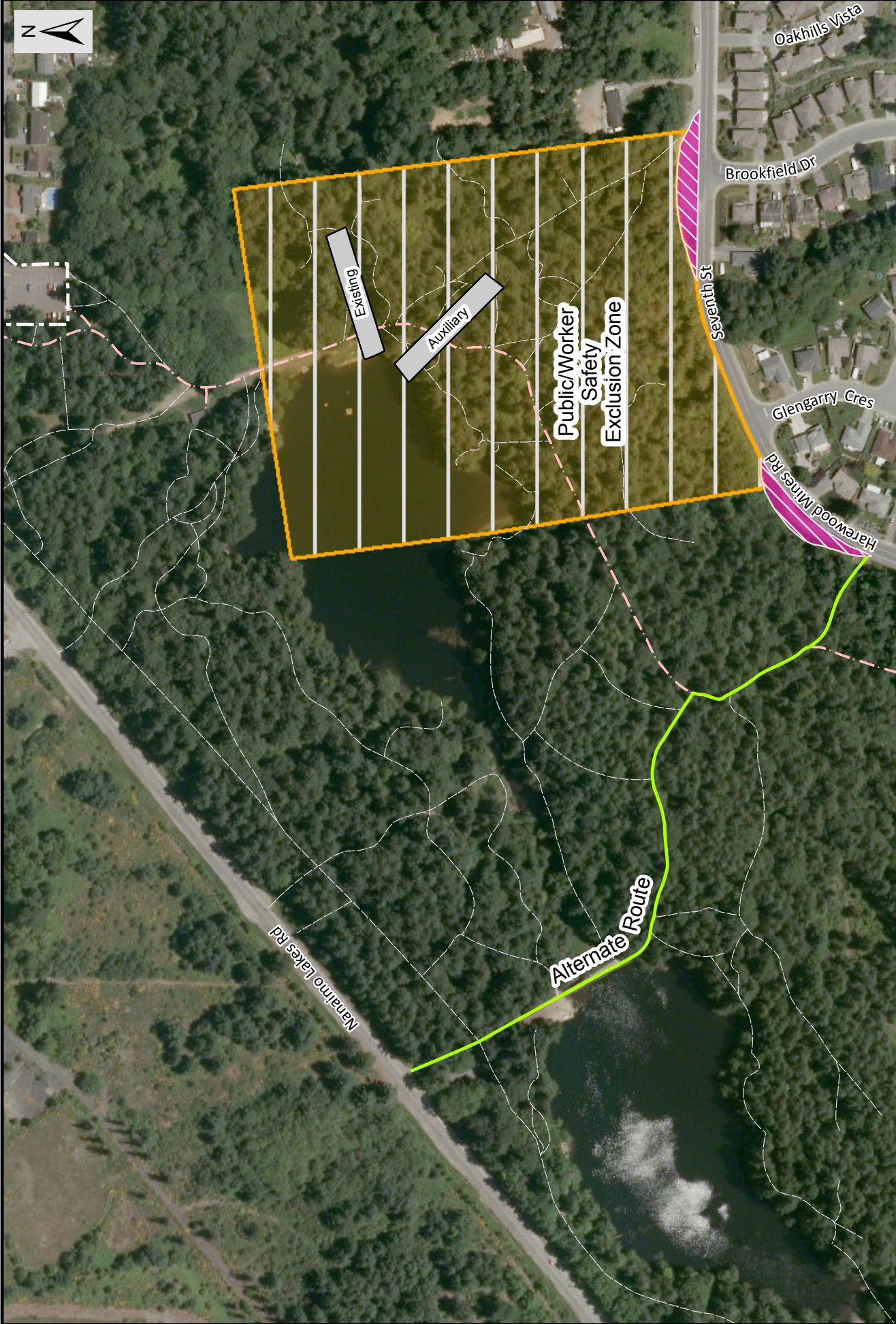
- The area around the Lower Colliery Dam will be closed from Tuesday, September 15 to Sunday, September 20 as construction of the Auxiliary Spillway begins.
- Signage and fencing will be installed to identify closed areas and alternate detour routes.
- Starting Tuesday, September 15, site clearing will begin, including tree removal and grubbing.
- The map on the back of this handout shows both the public/worker safety exclusion zone (area of the park to be closed) and the alternate route through the Middle Colliery Dam.
- All pedestrian traffic who currently enter Colliery Dam Park from Seventh Street will be directed to the access on Harewood Mines Road near Glengarry Crescent which will provide access to Nanaimo Lakes Road via the Middle Colliery Dam.
- Flag people will be on-site providing direction to people using the park.
- The closure is scheduled to end Monday, September 21, at which time access over the Lower Colliery Dam will be reinstated. Access to the park will continue to be from Harewood Mines Road near Glengarry Crescent. Further closures and alternate routing around the construction area will take place periodically to ensure safety of park users and contractors on site.
- Additional information is available on the City website under Colliery Dams. If immediate assistance is required, please contact:

**Toby Seward at toby.seward@nanaimo.ca (250-744-4424) and
Philip Cooper at philip.cooper@nanaimo.ca (250-755-4532)**



Artist rendering of completed project





Colliery Dam Park
Construction Zone Site Map
Lower Colliery Dam

-  Trails
-  Alternate Route
-  Spillway
-  Staging Area
-  Public/Worker Safety Exclusion Zone

